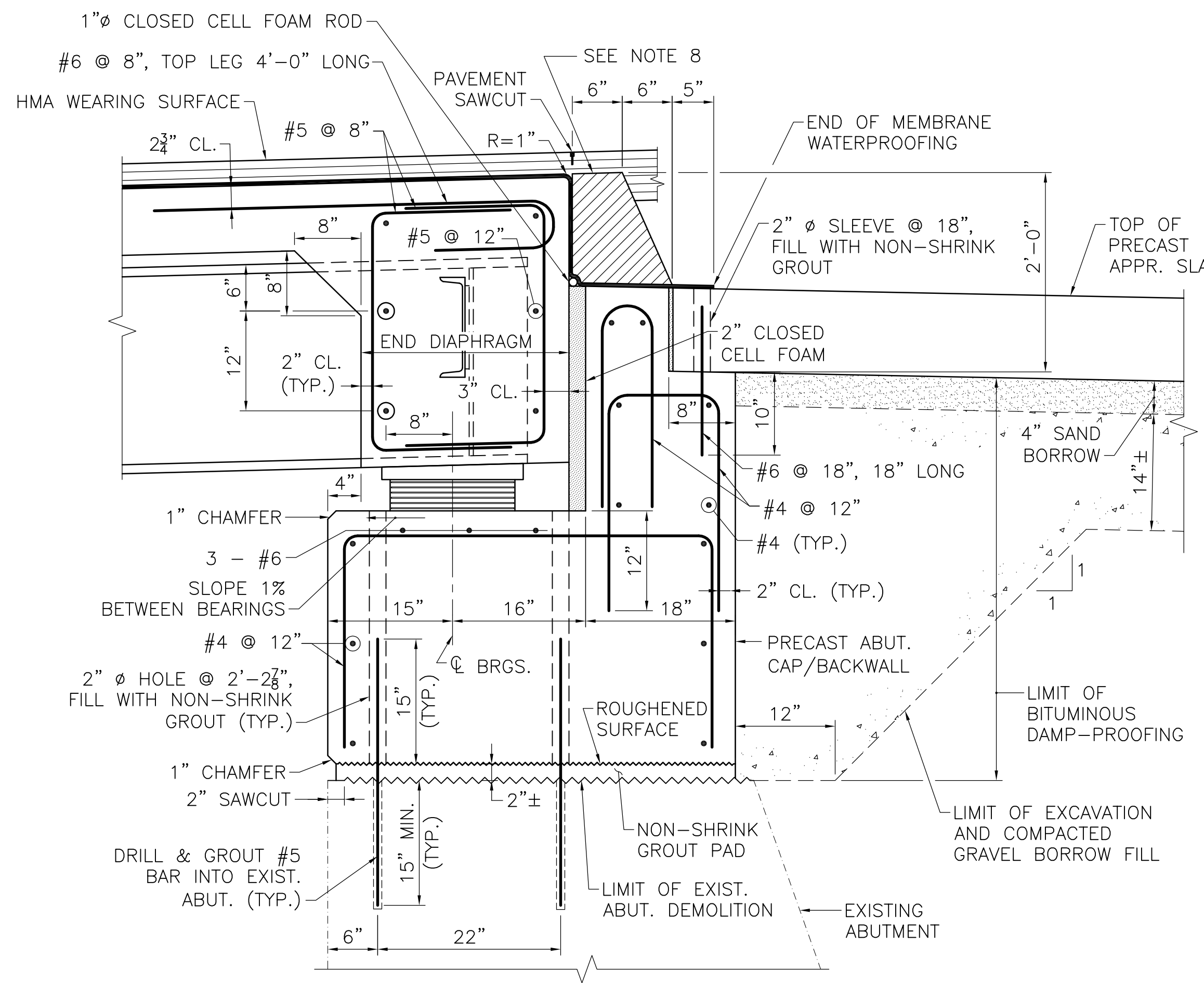
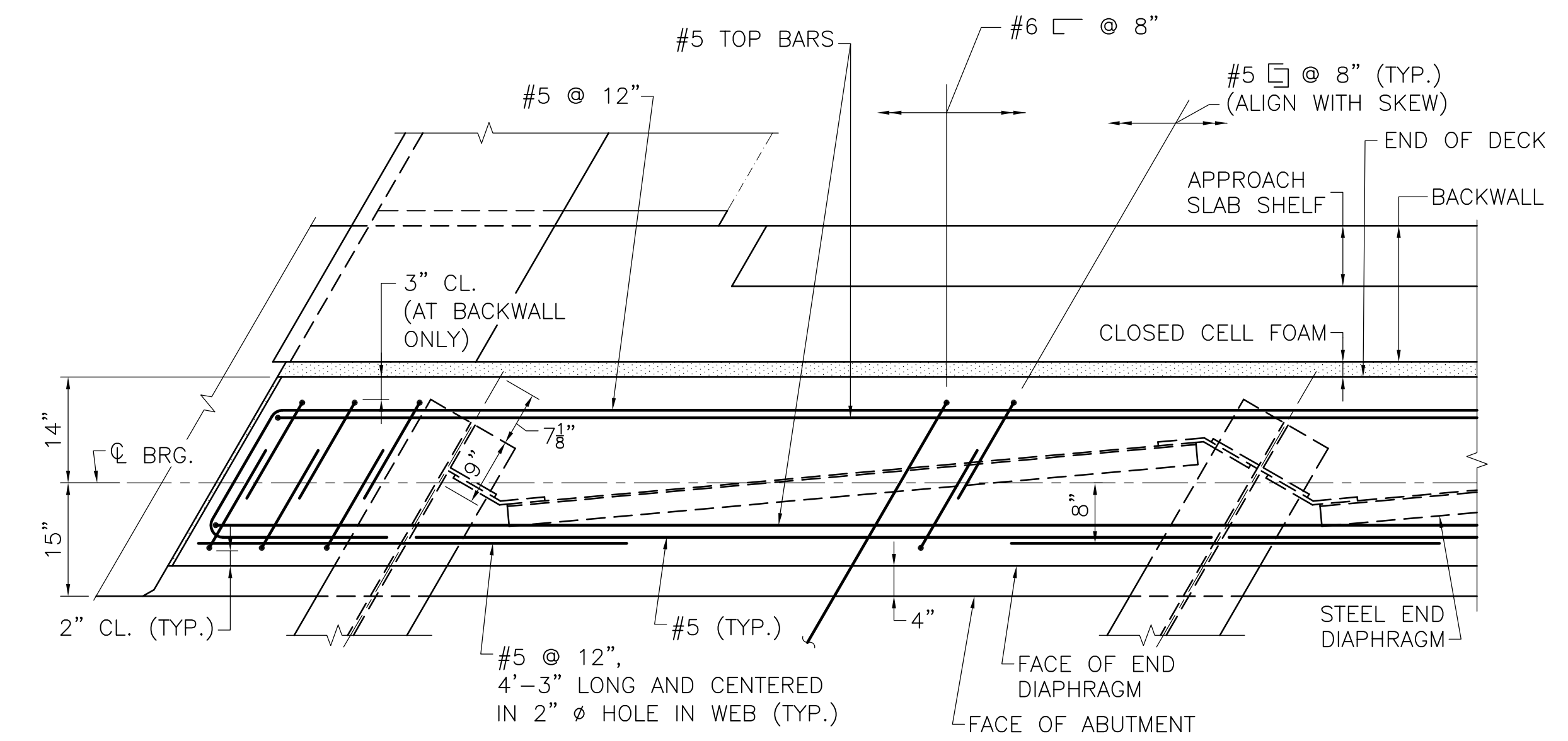


ROADWAY SECTION NOTES:

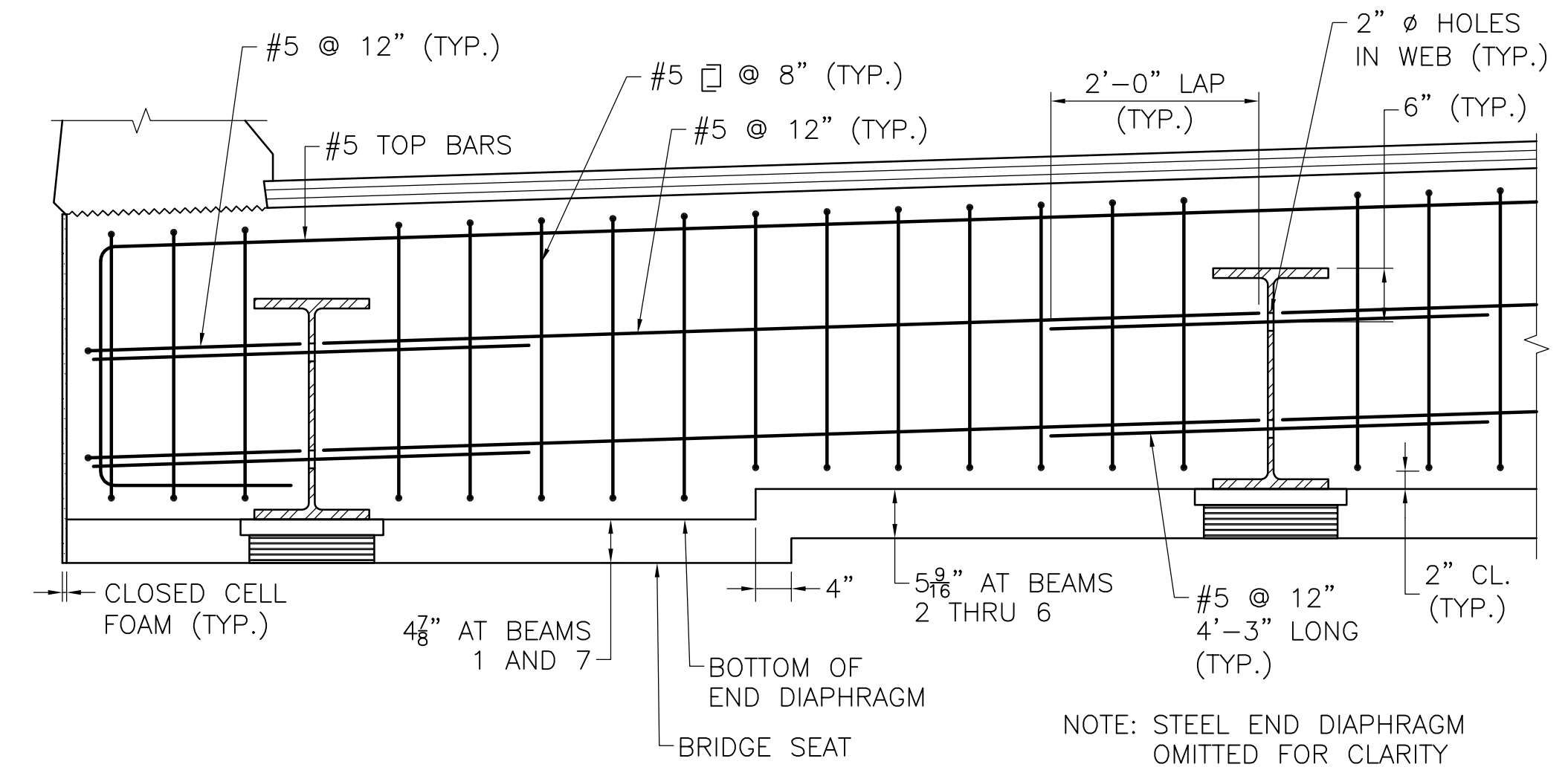
- ALL REINFORCEMENT SHOWN ON THIS SHEET SHALL BE EPOXY COATED.
- ALL PRECAST ABUTMENT CAP AND BACKWALL CONCRETE SHALL BE 4000 PSI, 3/4" IN, 610 CEMENT CONCRETE.
- THE BOTTOM OF THE PRECAST ABUTMENT CAP SHALL BE GIVEN A RAKE FINISH WITH A 1/4" MINIMUM AMPLITUDE.
- TOP OF BACKWALL SHALL BE TROWELED SMOOTH PARALLEL TO THE PROFILE GRADE.
- THE END DIAPHRAGM CONCRETE SHALL BE 4000 PSI, 3/4" IN, 585 HP CEMENT CONCRETE AND SHALL BE PLACED MONOLITHICALLY WITH THE DECK.
- CLOSED CELL FOAM OF THE SPECIFIED THICKNESSES SHALL BE PLACED AROUND THE END DIAPHRAGM AS SHOWN ON THE PLANS. CLOSED CELL FOAM BETWEEN THE END DIAPHRAGM AND THE BACKWALL SHALL BE SLID DOWN INTO PLACE AFTER THE SUPERSTRUCTURE IS SET ON THE ABUTMENT CAPS. CLOSED CELL FOAM BETWEEN THE END DIAPHRAGM AND THE CURTAIN WALLS SHALL BE ADHERED TO THE END DIAPHRAGM BEFORE THE CURTAIN WALLS ARE CAST.
- DRAPE MEMBRANE WATERPROOFING OVER CLOSED CELL FOAM BACKER ROD.
- PROTECTIVE COURSE TO BE SUPERPAVE PROTECTIVE COURSE, PLACED IN 2" LAYERS AND COMPACTED WITH A MECHANICAL HAND-GUIDED TAMPER WITHIN 12 HOURS AFTER PLACING MEMBRANE WATERPROOFING.
- THE PRECAST ABUTMENT CAP SHALL BE PLACED ON EITHER LEVELING JACKS PRECAST IN TO THE COMPONENTS OR ON LEVELING SHIMS SET AND SURVEYED TO THE PROPER ELEVATION PRIOR TO COMPONENT PLACEMENT.



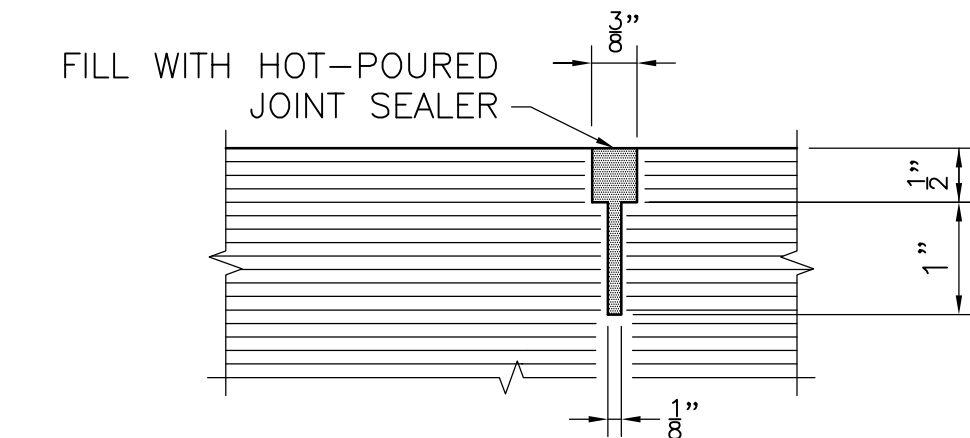
DETAILS AT ABUTMENT - ROADWAY SECTION
SCALE: 1" = 1'-0"



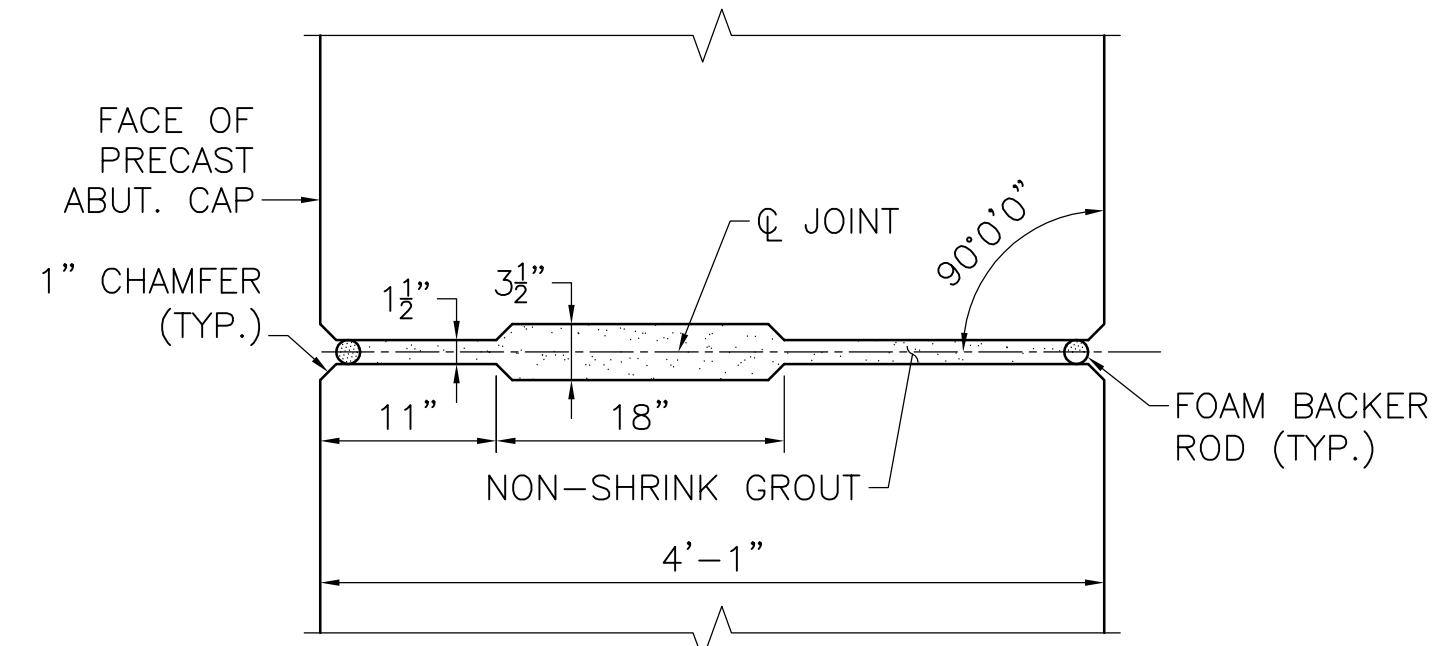
END DIAPHRAGM PLAN
SCALE: 3/4" = 1'-0"



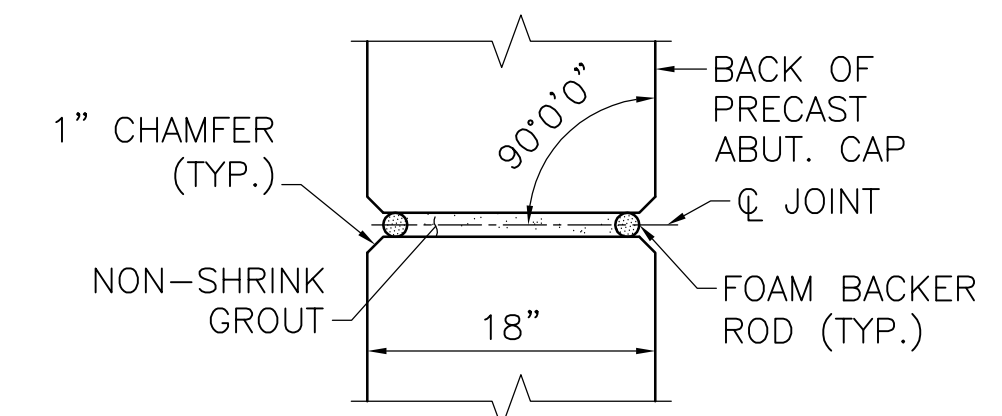
END DIAPHRAGM ELEVATION
SCALE: 3/4" = 1'-0"



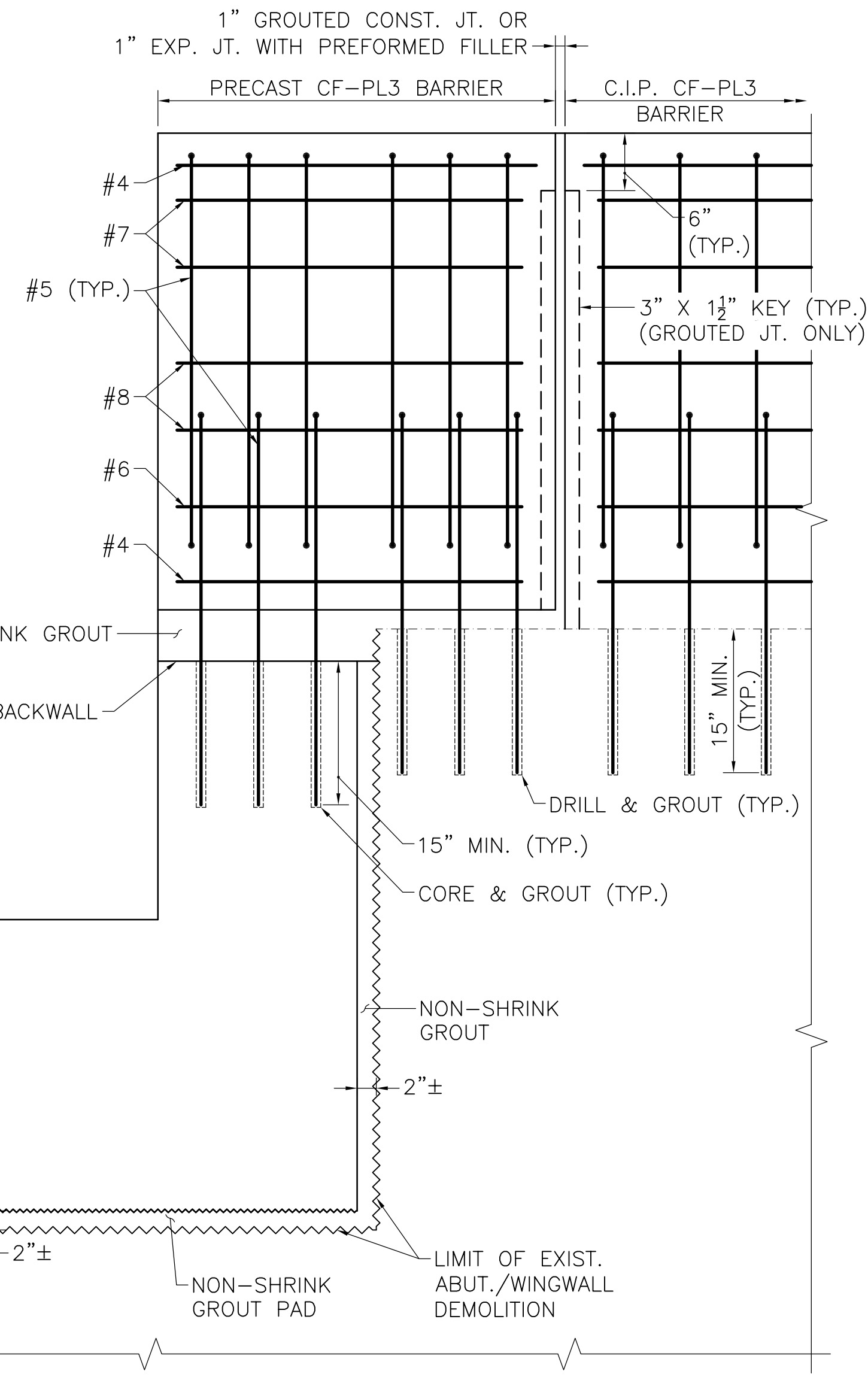
PAVEMENT SAWCUT DETAIL
NOT TO SCALE



PRECAST ABUTMENT CAP CONST. JOINT
SCALE: 1" = 1'-0"



PRECAST ABUTMENT BACKWALL CONST. JOINT
SCALE: 1" = 1'-0"



DETAILS AT ABUTMENT - SECTION AT BARRIER
SCALE: 1" = 1'-0"

| | |
|------|--------------------------------|
| DATE | ISSUED FOR CONSTRUCTION |
| | DESCRIPTION |
| | USE ONLY PRINTS OF LATEST DATE |

C:\Active Projects\0181\Bridge\PhilBR169.dwg, Plotted: Oct 11, 2010 - 9:13pm