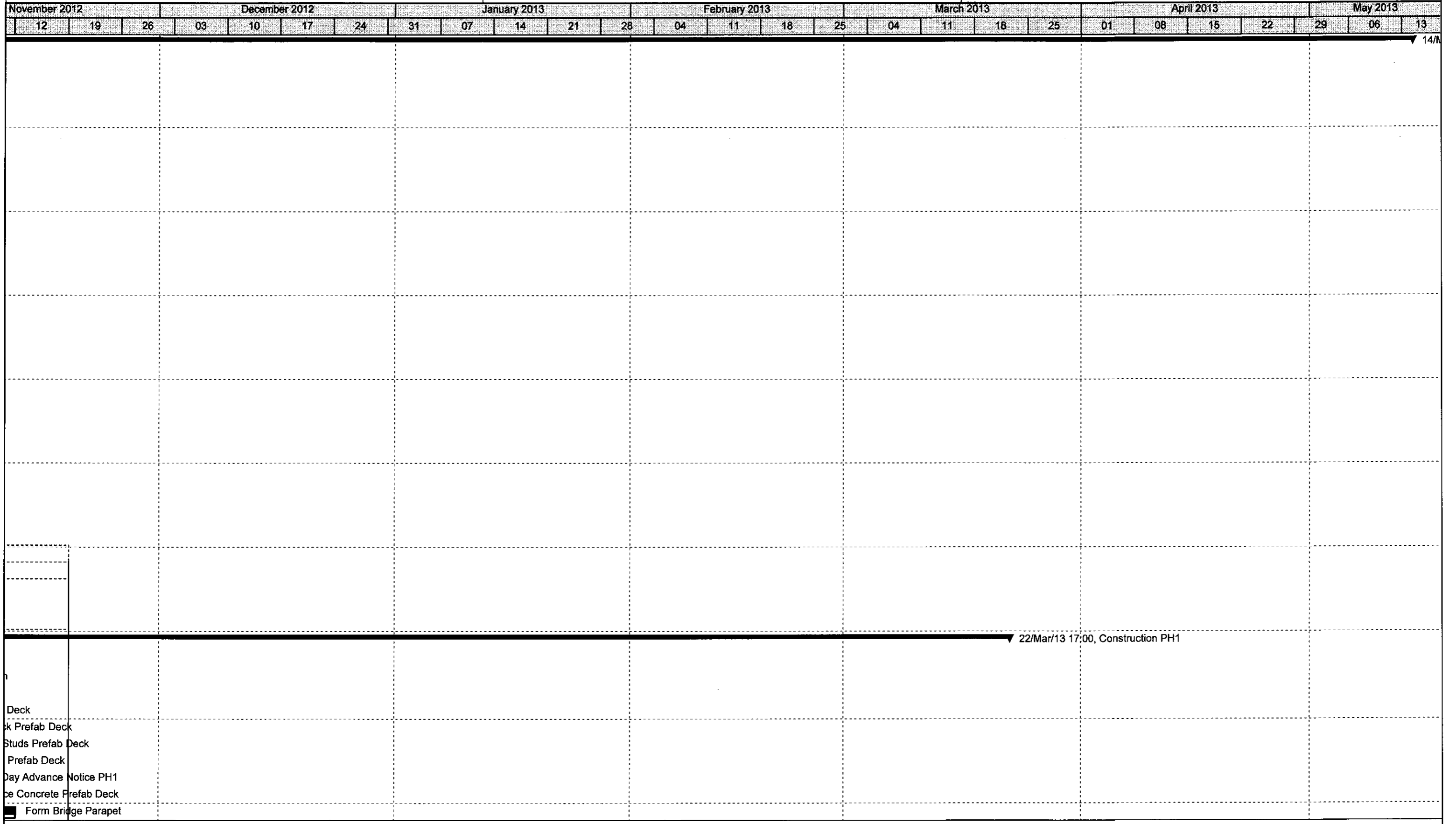


Activity ID	Activity Name	Original Duration	Start	Finish	Late Start	Late Finish	Total Float	September 2012					October 2012				November 2012				
								27	03	10	17	24	01	08	15	22	29	05			
Montour Bridge		174	29/Aug/12 08:00	14/May/13 12:00	29/Aug/12 08:00	14/May/13 17:00	1														
General		40	29/Aug/12 08:00	22/Oct/12 13:30	29/Aug/12 08:00	20/Nov/12 17:00	22														
A1000	Notice To Proceed	0	29/Aug/12 08:00		29/Aug/12 08:00		0														
A1010	Beams: Prepare/Submit	7	29/Aug/12 08:00	07/Sep/12 17:00	29/Aug/12 08:00	07/Sep/12 17:00	0														
A1050	Grid Deck: Prepare/Submit	7	29/Aug/12 08:00	07/Sep/12 17:00	06/Sep/12 08:00	14/Sep/12 17:00	5														
A1090	Exp. Joint: Prepare/Submit	7	29/Aug/12 08:00	07/Sep/12 17:00	28/Sep/12 11:00	09/Oct/12 11:00	21														
A1130	Barrier Rail: Prepare/Submit	7	29/Aug/12 08:00	07/Sep/12 17:00	28/Sep/12 10:30	09/Oct/12 10:30	21														
A1170	PC Abut & M. Slabs: Prepare/Submit	7	29/Aug/12 08:00	07/Sep/12 17:00	28/Sep/12 11:00	09/Oct/12 11:00	21														
A1020	Beams: First Review	5	10/Sep/12 08:00	14/Sep/12 17:00	10/Sep/12 08:00	14/Sep/12 17:00	0														
A1060	Grid Deck: First Review	5	10/Sep/12 08:00	14/Sep/12 17:00	17/Sep/12 08:00	21/Sep/12 17:00	5														
A1100	Exp. Joint: First Review	5	10/Sep/12 08:00	14/Sep/12 17:00	09/Oct/12 11:00	16/Oct/12 11:00	21														
A1140	Barrier Rail: First Review	5	10/Sep/12 08:00	14/Sep/12 17:00	09/Oct/12 10:30	16/Oct/12 10:30	21														
A1180	PC Abut & M. Slabs: First Review	5	10/Sep/12 08:00	14/Sep/12 17:00	09/Oct/12 11:00	16/Oct/12 11:00	21														
A1030	Beams: Revise/Resubmit	3	17/Sep/12 08:00	19/Sep/12 15:30	17/Sep/12 08:00	19/Sep/12 15:30	0														
A1070	Grid Deck: Revise/Resubmit	3	17/Sep/12 08:00	19/Sep/12 15:30	24/Sep/12 08:00	26/Sep/12 15:30	5														
A1110	Exp. Joint: Revise/Resubmit	3	17/Sep/12 08:00	19/Sep/12 15:30	16/Oct/12 11:00	19/Oct/12 09:30	21														
A1150	Barrier Rail: Revise/Resubmit	3	17/Sep/12 08:00	19/Sep/12 15:30	16/Oct/12 10:30	19/Oct/12 09:00	21														
A1190	PC Abut & M. Slabs: Revise/Resubmit	3	17/Sep/12 08:00	19/Sep/12 15:30	16/Oct/12 11:00	19/Oct/12 09:30	21														
A1040	Beams: Final Review/Approval	2	19/Sep/12 15:30	21/Sep/12 14:30	19/Sep/12 15:30	21/Sep/12 14:30	0														
A1080	Grid Deck: Final Review/Approval	2	19/Sep/12 15:30	21/Sep/12 14:30	26/Sep/12 15:30	28/Sep/12 14:30	5														
A1120	Exp. Joint: Final Review/Approval	2	19/Sep/12 15:30	21/Sep/12 14:30	19/Oct/12 09:30	23/Oct/12 08:30	21														
A1160	Barrier Rail: Final Review/Approval	2	19/Sep/12 15:30	21/Sep/12 14:30	19/Oct/12 09:00	22/Oct/12 16:00	21														
A1200	PC Abut & M. Slabs: Final Review/Approval	2	19/Sep/12 15:30	21/Sep/12 14:30	19/Oct/12 09:30	23/Oct/12 08:30	21														
A1540	Fabricate Bearing Pads	20	21/Sep/12 14:30	19/Oct/12 13:00	24/Oct/12 11:00	19/Nov/12 16:00	23														
A1210	Fabricate Beams	20	21/Sep/12 14:30	19/Oct/12 14:30	21/Sep/12 14:30	19/Oct/12 14:30	0														
A1220	Fabricate Grid Deck	20	21/Sep/12 14:30	19/Oct/12 14:30	28/Sep/12 14:30	26/Oct/12 14:30	5														
A1230	Fabricate Exp. Joints	20	21/Sep/12 14:30	19/Oct/12 14:30	23/Oct/12 08:30	20/Nov/12 08:30	21														
A1240	Fabricate Barrier Rail	20	21/Sep/12 14:30	19/Oct/12 14:30	23/Oct/12 08:00	19/Nov/12 16:00	21														
A1250	Fabricate PC Abut & M. Slabs	20	21/Sep/12 14:30	19/Oct/12 14:30	23/Oct/12 08:30	20/Nov/12 08:30	21														
A1550	Deliever Bearing Pads	1	19/Oct/12 13:00	22/Oct/12 11:30	20/Nov/12 08:30	20/Nov/12 17:00	22														
A1340	Delivery Expansion Joint	1	19/Oct/12 14:30	22/Oct/12 13:00	20/Nov/12 08:30	20/Nov/12 17:00	21														
A1360	Delivery PC Abut & M. Slabs	1	19/Oct/12 14:30	22/Oct/12 13:00	20/Nov/12 08:30	20/Nov/12 17:00	21														
A1320	Delivery Beams	1	19/Oct/12 14:30	22/Oct/12 13:30	24/Oct/12 14:30	25/Oct/12 14:30	3														
A1330	Delivery Grid Deck	1	19/Oct/12 14:30	22/Oct/12 13:30	26/Oct/12 14:30	29/Oct/12 13:30	5														
A1350	Delivery Barrier Rail	1	19/Oct/12 14:30	22/Oct/12 13:30	20/Nov/12 08:00	20/Nov/12 17:00	21														
Construction PH1		99	19/Oct/12 14:30	22/Mar/13 17:00	19/Oct/12 14:30	25/Mar/13 11:00	0														
A1270	Mobilization	2	19/Oct/12 14:30	23/Oct/12 14:30	19/Oct/12 14:30	23/Oct/12 14:30	0														
A1280	Implement PH1 E&S Plan	2	23/Oct/12 14:30	25/Oct/12 14:30	23/Oct/12 14:30	25/Oct/12 14:30	0														
A1300	Implement PH1 MPT	2	23/Oct/12 14:30	25/Oct/12 14:30	23/Oct/12 14:30	25/Oct/12 14:30	0														
A1290	Set Beams Prefab Deck	2	25/Oct/12 14:30	29/Oct/12 13:30	25/Oct/12 14:30	29/Oct/12 13:30	0														
A1370	Install Grid Deck Prefab Deck	2	29/Oct/12 13:30	31/Oct/12 13:30	29/Oct/12 13:30	31/Oct/12 13:30	0														
A1380	Install Shear Studs Prefab Deck	1	31/Oct/12 13:30	01/Nov/12 12:00	31/Oct/12 13:30	01/Nov/12 12:00	0														
A1390	Form Prefab Deck	3	01/Nov/12 13:00	06/Nov/12 10:30	01/Nov/12 13:00	06/Nov/12 10:30	0														
A1260	14 Day Advance Notice PH1	0	07/Nov/12 08:00*		07/Nov/12 08:00		0														
A1410	Place Concrete Prefab Deck	1	06/Nov/12 10:30	07/Nov/12 10:00	06/Nov/12 10:30	07/Nov/12 10:00	0														
A1460	Form Bridge Parapet	3	07/Nov/12 10:00	12/Nov/12 08:30	07/Nov/12 10:00	12/Nov/12 08:30	0														

Actual Work
 Critical Remaining Work
 Summary
 Remaining Work
 Milestone

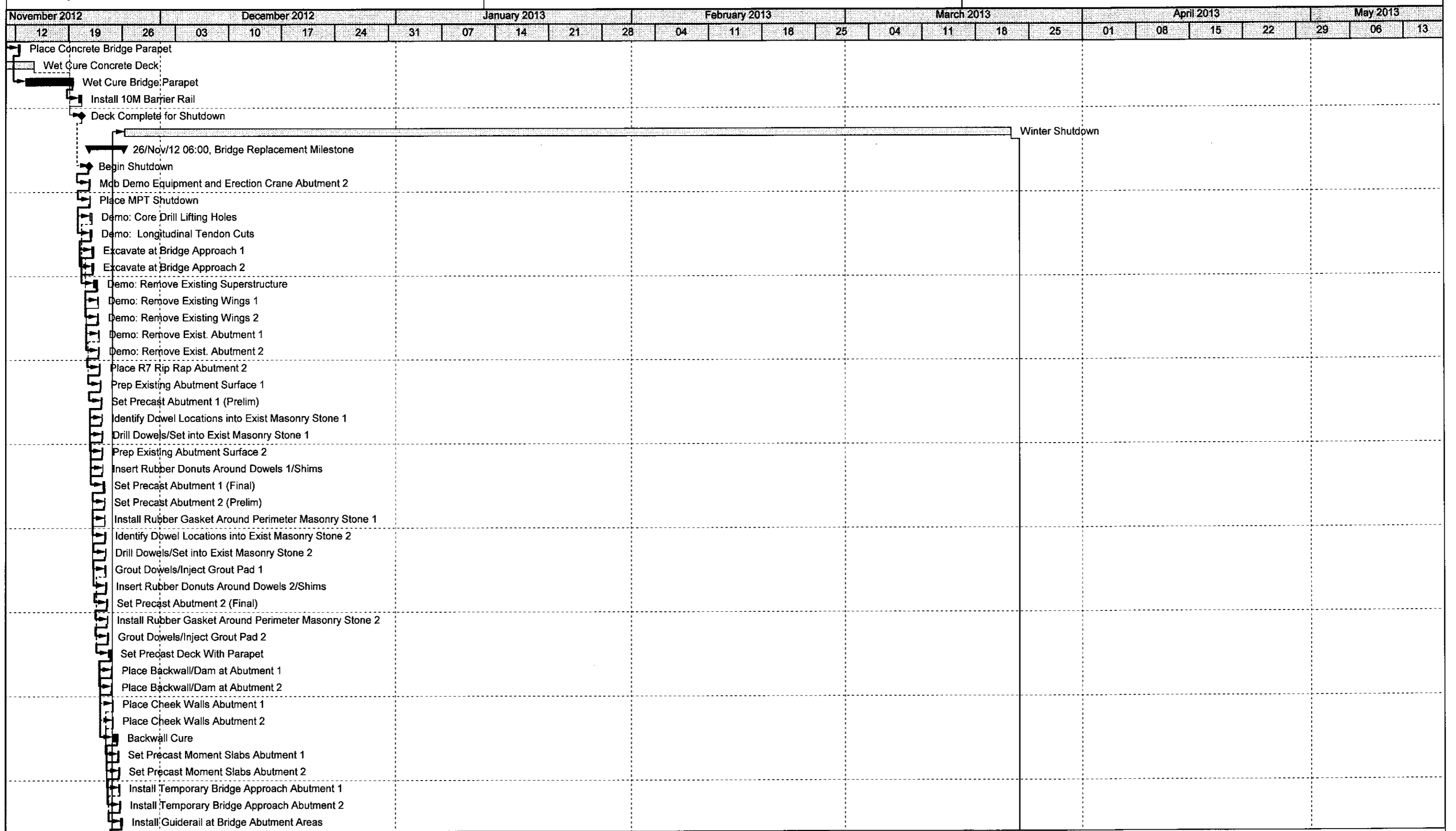


Deck
 Deck Prefab Deck
 Studs Prefab Deck
 Prefab Deck
 Day Advance Notice PH1
 Concrete Prefab Deck
 Form Bridge Parapet

Actual Work
 Critical Remaining Work
 Summary
 Remaining Work
 Milestone

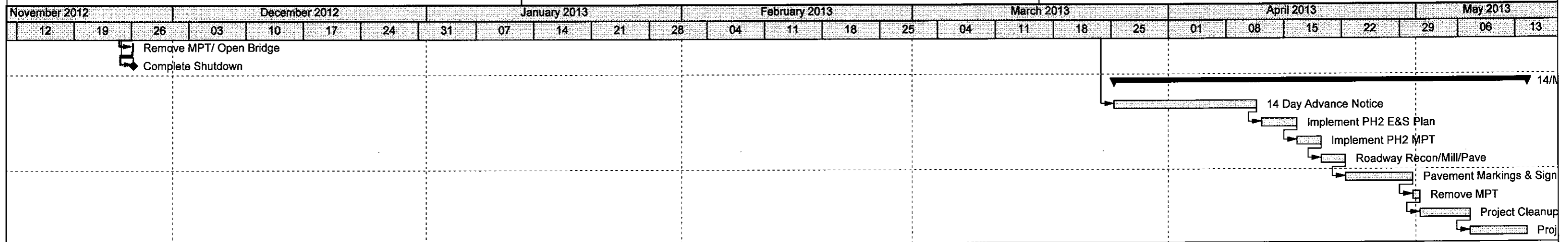
Activity ID	Activity Name	Original Duration	Start	Finish	Late Start	Late Finish	Total Float	September 2012					October 2012				November 2012		
								27	03	10	17	24	01	08	15	22	29	05	
A1470	Place Concrete Bridge Parapet	1	12/Nov/12 08:30	12/Nov/12 16:00	12/Nov/12 08:30	12/Nov/12 16:00	0												
A1560	Wet Cure Concrete Deck	5	07/Nov/12 10:00	14/Nov/12 10:00	14/Nov/12 08:00	20/Nov/12 17:00	5												
A1570	Wet Cure Bridge Parapet	5	13/Nov/12 08:00	19/Nov/12 16:00	13/Nov/12 08:00	19/Nov/12 16:00	0												
A1530	Install 10M Barrier Rail	1	20/Nov/12 08:00	20/Nov/12 17:00	20/Nov/12 08:00	20/Nov/12 17:00	0												
A2000	Deck Complete for Shutdown	0		20/Nov/12 17:00*		21/Nov/12 00:00	0												
A1420	Winter Shutdown	83	26/Nov/12 08:00	22/Mar/13 17:00	26/Nov/12 11:00	25/Mar/13 11:00	0												
Bridge Replacement Milestone		5	21/Nov/12 18:00	26/Nov/12 06:00	21/Nov/12 18:00	26/Nov/12 06:00	0												
A1970	Begin Shutdown	0	21/Nov/12 18:00*		21/Nov/12 18:00		0												
A1930	Mob Demo Equipment and Erection Crane Abutment 2	0	21/Nov/12 18:00	21/Nov/12 20:00	21/Nov/12 18:00	21/Nov/12 20:00	0												
A1960	Place MPT Shutdown	0	21/Nov/12 20:00*	21/Nov/12 21:00	21/Nov/12 20:00	21/Nov/12 21:00	0												
A1940	Demo: Core Drill Lifting Holes	0	21/Nov/12 21:00	22/Nov/12 03:00	22/Nov/12 03:00	22/Nov/12 09:00	0												
A1950	Demo: Longitudinal Tendon Cuts	0	21/Nov/12 21:00	22/Nov/12 03:00	21/Nov/12 21:00	22/Nov/12 03:00	0												
A1590	Excavate at Bridge Approach 1	0	22/Nov/12 03:00*	22/Nov/12 09:00	22/Nov/12 03:00	22/Nov/12 09:00	0												
A1600	Excavate at Bridge Approach 2	0	22/Nov/12 03:00*	22/Nov/12 09:00	22/Nov/12 03:00	22/Nov/12 09:00	0												
A1580	Demo: Remove Existing Superstructure	0	22/Nov/12 09:00*	22/Nov/12 19:00	22/Nov/12 09:00	22/Nov/12 19:00	0												
A1630	Demo: Remove Existing Wings 1	0	22/Nov/12 19:00*	22/Nov/12 23:00	22/Nov/12 21:00	23/Nov/12 01:00	0												
A1640	Demo: Remove Existing Wings 2	0	22/Nov/12 19:00*	22/Nov/12 23:00	22/Nov/12 19:00	22/Nov/12 23:00	0												
A1610	Demo: Remove Exist. Abutment 1	0	22/Nov/12 23:00*	23/Nov/12 03:00	23/Nov/12 01:00	23/Nov/12 05:00	0												
A1620	Demo: Remove Exist. Abutment 2	0	22/Nov/12 23:00*	23/Nov/12 03:00	22/Nov/12 23:00	23/Nov/12 03:00	0												
A1650	Place R7 Rip Rap Abutment 2	0	23/Nov/12 03:00	23/Nov/12 05:00	23/Nov/12 03:00	23/Nov/12 05:00	0												
A1660	Prep Existing Abutment Surface 1	0	23/Nov/12 05:00*	23/Nov/12 09:00	23/Nov/12 05:00	23/Nov/12 09:00	0												
A1680	Set Precast Abutment 1 (Prelim)	0	23/Nov/12 09:00*	23/Nov/12 11:00	23/Nov/12 09:00	23/Nov/12 11:00	0												
A1700	Identify Dowel Locations into Exist Masonry Stone 1	0	23/Nov/12 11:00*	23/Nov/12 12:00	23/Nov/12 11:00	23/Nov/12 12:00	0												
A1720	Drill Dowels/Set into Exist Masonry Stone 1	0	23/Nov/12 12:00*	23/Nov/12 14:00	23/Nov/12 12:00	23/Nov/12 14:00	0												
A1670	Prep Existing Abutment Surface 2	0	23/Nov/12 11:00*	23/Nov/12 15:00	23/Nov/12 11:00	23/Nov/12 15:00	0												
A1740	Insert Rubber Donuts Around Dowels 1/Shims	0	23/Nov/12 14:00*	23/Nov/12 15:00	23/Nov/12 14:00	23/Nov/12 15:00	0												
A1760	Set Precast Abutment 1 (Final)	0	23/Nov/12 15:00*	23/Nov/12 18:00	23/Nov/12 15:00	23/Nov/12 18:00	0												
A1690	Set Precast Abutment 2 (Prelim)	0	23/Nov/12 18:00*	23/Nov/12 20:00	23/Nov/12 18:00	23/Nov/12 20:00	0												
A1780	Install Rubber Gasket Around Perimeter Masonry Stone 1	0	23/Nov/12 18:00*	23/Nov/12 20:00	24/Nov/12 03:00	24/Nov/12 05:00	0												
A1710	Identify Dowel Locations into Exist Masonry Stone 2	0	23/Nov/12 20:00*	23/Nov/12 21:00	23/Nov/12 20:00	23/Nov/12 21:00	0												
A1730	Drill Dowels/Set into Exist Masonry Stone 2	0	23/Nov/12 21:00	23/Nov/12 23:00	23/Nov/12 21:00	23/Nov/12 23:00	0												
A1800	Grout Dowels/Inject Grout Pad 1	0	23/Nov/12 20:00*	23/Nov/12 23:00	24/Nov/12 05:00	24/Nov/12 08:00	0												
A1750	Insert Rubber Donuts Around Dowels 2/Shims	0	23/Nov/12 23:00*	24/Nov/12 00:00	23/Nov/12 23:00	24/Nov/12 00:00	0												
A1770	Set Precast Abutment 2 (Final)	0	24/Nov/12 00:00*	24/Nov/12 03:00	24/Nov/12 00:00	24/Nov/12 03:00	0												
A1790	Install Rubber Gasket Around Perimeter Masonry Stone 2	0	24/Nov/12 03:00*	24/Nov/12 05:00	24/Nov/12 03:00	24/Nov/12 05:00	0												
A1810	Grout Dowels/Inject Grout Pad 2	0	24/Nov/12 05:00*	24/Nov/12 08:00	24/Nov/12 05:00	24/Nov/12 08:00	0												
A1820	Set Precast Deck With Parapet	0	24/Nov/12 08:00	24/Nov/12 15:00	24/Nov/12 08:00	24/Nov/12 15:00	0												
A1830	Place Backwall/Dam at Abutment 1	0	24/Nov/12 15:00*	24/Nov/12 19:00	24/Nov/12 15:00	24/Nov/12 19:00	0												
A1840	Place Backwall/Dam at Abutment 2	0	24/Nov/12 15:00*	24/Nov/12 19:00	24/Nov/12 15:00	24/Nov/12 19:00	0												
A1870	Place Cheek Walls Abutment 1	0	24/Nov/12 19:00*	24/Nov/12 23:00	25/Nov/12 09:00	25/Nov/12 13:00	1												
A1880	Place Cheek Walls Abutment 2	0	24/Nov/12 19:00*	24/Nov/12 23:00	25/Nov/12 09:00	25/Nov/12 13:00	1												
A1990	Backwall Cure	1	24/Nov/12 19:00*	25/Nov/12 13:00	24/Nov/12 19:00	25/Nov/12 13:00	0												
A1850	Set Precast Moment Slabs Abutment 1	0	25/Nov/12 13:00*	25/Nov/12 16:00	25/Nov/12 13:00	25/Nov/12 16:00	0												
A1860	Set Precast Moment Slabs Abutment 2	0	25/Nov/12 16:00*	25/Nov/12 19:00	25/Nov/12 16:00	25/Nov/12 19:00	0												
A1890	Install Temporary Bridge Approach Abutment 1	0	25/Nov/12 16:00*	25/Nov/12 19:00	25/Nov/12 19:00	25/Nov/12 22:00	0												
A1900	Install Temporary Bridge Approach Abutment 2	0	25/Nov/12 19:00*	25/Nov/12 22:00	25/Nov/12 19:00	25/Nov/12 22:00	0												
A1910	Install Guiderail at Bridge Abutment Areas	0	25/Nov/12 22:00*	26/Nov/12 03:00	25/Nov/12 22:00	26/Nov/12 03:00	0												

Actual Work
 Critical Remaining Work
 Summary
 Remaining Work
 Milestone



Actual Work
 Critical Remaining Work
 Summary
 Remaining Work
 Milestone

Activity ID	Activity Name	Original Duration	Start	Finish	Late Start	Late Finish	Total Float	September 2012					October 2012				November 2012	
								27	03	10	17	24	01	08	15	22	29	05
A1920	Remove MPT/ Open Bridge	0	26/Nov/12 03:00*	26/Nov/12 06:00	26/Nov/12 03:00	26/Nov/12 06:00	0											
A1980	Complete Shutdown	0		26/Nov/12 06:00*		26/Nov/12 06:00	0											
Construction PH2		36	25/Mar/13 08:00	14/May/13 12:00	25/Mar/13 11:00	14/May/13 17:00	1											
A1430	14 Day Advance Notice	14	25/Mar/13 08:00*	11/Apr/13 17:00	25/Mar/13 11:00	12/Apr/13 11:00	0											
A1450	Implement PH2 E&S Plan	3	12/Apr/13 08:00	16/Apr/13 15:30	12/Apr/13 11:00	17/Apr/13 09:30	0											
A1440	Implement PH2 MPT	3	16/Apr/13 15:30	19/Apr/13 14:00	17/Apr/13 09:30	19/Apr/13 17:00	0											
A1480	Roadway Recon/Mill/Pave	3	19/Apr/13 14:00	22/Apr/13 12:30	20/Apr/13 10:00	23/Apr/13 08:30	1											
A1490	Pavement Markings & Signs	6	22/Apr/13 12:30	30/Apr/13 13:30	23/Apr/13 08:30	01/May/13 08:30	1											
A1500	Remove MPT	1	30/Apr/13 13:30	01/May/13 12:00	01/May/13 08:30	01/May/13 17:00	1											
A1510	Project Cleanup/Demobilization	4	01/May/13 13:00	07/May/13 12:00	02/May/13 08:00	07/May/13 17:00	1											
A1520	Project Complete	5	07/May/13 13:00	14/May/13 12:00	08/May/13 08:00	14/May/13 17:00	1											



Montour Item Resources

<i>Item #</i>	<i>Activity Name</i>	<i>Carpenter</i>	<i>Laborer</i>	<i>Operator</i>	<i>Finisher</i>	<i>Sub</i>	<i>Excavator</i>	<i>Loader</i>	<i>550 Crane</i>	<i>50 Ton Picker</i>	<i>Other Equipment</i>	<i>Misc. Material</i>
A1930	Mob Demo Equipment & Erection Crane Abut 2	x	x	x	x	x	2	1	1	x	Light Plants	x
A1960	Place MPT Shutdown	x	2	1	x	Beth's	x	x	x	x	Barrier Clamps	x
A1940	Demo: Core Drill Lifting Holes	x	2	x	x	x	x	x	x	x	Core Machine	x
A1950	Demo: Longitudinal Tendon Cuts	x	2	x	x	x	x	x	x	x	Saw	x
A1590	Excavate at Bridge Approach 1	x	1	1	x	x	1	1	x	x	1 Triaxle	x
A1600	Excavate at Bridge Approach 2	x	1	1	x	x	1	x	x	x	x	x
A1580	Demo: Remove Existing Superstructure	x	4	4	x	x	x	x	1	x	x	x
A1630	Demo: Remove Existing Wings 1	x	2	1	x	x	1	x	x	x	Saw	x
A1640	Demo: Remove Existing Wings 2	x	2	1	x	x	1	x	x	x	Saw	x
A1610	Demo: Remove Existing Abutment 1	x	2	1	x	x	1	x	x	x	Saw	x
A1620	Demo: Remove Existing Abutment 2	x	2	1	x	x	1	x	x	x	Saw	x
A1650	Place R7 Rip Rap Abutment 2	x	1	1	x	Hanson	1	x	x	x	x	x
A1660	Prep Existing Abutment 1 Surface	2	2	x	x	Survey	x	x	x	x	x	Steel Shims
A1680	Set Precast Abutment 1 (Prelim)	1	2	1	x	Survey	x	x	1	x	x	Lifting Lugs
A1700	Identify Dowel Locations into Existing Mas. Stone 1	1	2	1	x	x	x	x	1	x	x	Dowels
A1720	Drill Dowels/Set into Exist Masonry Stone 1	1	2	x	x	x	x	x	x	x	Core Machine	Grout
A1670	Prep Existing Abutment 2 Surface	2	2	x	x	Survey	x	x	x	x	x	Steel Shims
A1740	Insert Rubber Donuts Around Dowels/Shims Abut 1	1	2	x	x	x	x	x	x	x	x	Rubber Gaskets
A1760	Set Precast Abutment 1 (Final)	1	2	1	x	Survey	x	x	1	x	x	Lifting Lugs
A1690	Set Precast Abutment 2 (Prelim)	1	2	1	x	Survey	x	x	1	x	x	Lifting Lugs
A1780	Install Rubber Gasket Perimeter Masonry Stone 1	2	2	x	x	x	x	x	x	x	x	Rubber Gaskets
A1710	Identify Dowel Locations into Existing Mas. Stone 2	1	2	1	x	x	x	x	1	x	x	Dowels
A1730	Drill Dowels/Set into Exist Masonry Stone 2	1	2	x	x	x	x	x	x	x	Core Machine	Grout
A1800	Grout Dowels/Inject Grout Pad 1	2	2	x	x	x	x	x	x	x	Grout System	Fast Set Grout
A1750	Insert Rubber Donuts Around Dowels/Shims Abut 2	1	2	x	x	x	x	x	x	x	x	Rubber Gaskets
A1770	Set Precast Abutment 2 (Final)	1	2	1	x	Survey	x	x	1	x	x	Lifting Lugs
A1790	Install Rubber Gasket Perimeter Masonry Stone 2	2	2	x	x	x	x	x	x	x	x	Rubber Gaskets
A1810	Grout Dowels/Inject Grout Pad 2	2	2	x	x	x	x	x	x	x	Grout System	Fast Set Grout
A1820	Set Precast Deck With Parapet	1	2	x	x	Alvarez	x	x	1	x	x	Anchor Bolts
A1830	Place Backwall/Dam at Abutment 1	2	1	1	1	x	x	1	x	x	x	Dams/Concrete
A1840	Place Backwall/Dam at Abutment 2	2	1	1	1	x	x	1	x	x	x	Dams/Concrete
A1870	Place Cheek Walls Abutment 1	2	1	x	1	x	x	x	x	x	x	Concrete
A1880	Place Cheek Walls Abutment 2	2	1	x	1	x	x	x	x	x	x	Concrete
A1990	Backwall Cure	1	2	x	x	x	x	x	x	x	x	Blankets
A1850	Set Precast Moment Slabs Abutment 1	1	2	1	x	x	x	x	1	1	x	Lifting Lugs
A1860	Set Precast Moment Slabs Abutment 2	1	2	1	x	x	x	x	1	1	x	Lifting Lugs
A1890	Install Temporary Bridge Approach Abut 1	x	2	1	x	x	1	x	x	x	Roller/Vibe Tamp	Metal Plates
A1900	Install Temporary Bridge Approach Abut 2	x	2	1	x	x	1	x	x	x	Roller/Vibe Tamp	Metal Plates
A1910	Install Guiderail at Bridge Abutment Areas	x	1	x	x	U Company	x	x	x	x	x	x
A1920	Remove MPT/Open Bridge	x	2	1	x	Beth's	x	x	x	x	Barrier Clamps	x