

DP# 09173
Bid Date: 10/22/2009
3 Plan Sheets

**GORDON'S CORNER ROAD OVER ROUTE 9
FROM M.P. 3.620 TO M.P. 3.714
CONTRACT NO. 118003160
BRIDGE SUPERSTRUCTURE REPLACEMENT
TOWNSHIP OF MANALAPAN, MONMOUTH COUNTY
FEDERAL PROJECT NO. BH-0001(247)**

ADDENDUM NO. 1

Page 1 of 8

THE FOLLOWING CHANGES ARE MADE TO THE SPECIAL PROVISIONS:

105.07.02 Work Performed by Utilities

THE SUBPART JERSEY CENTRAL POWER AND LIGHT (ELECTRIC) IS CHANGED TO:

Jersey Central Power and Light (Electric)

The Contractor shall use an electric subcontractor, pre-approved by JCP&L to relocate all electric facilities. JCP&L will provide material and perform routine inspections of the relocations. Work to be performed by the electric subcontractor is summarized in Section 654.

162.03.04 Temporary Lighting

THE FIRST SENTENCE IS CHANGED TO:

Provide temporary lighting for Route 9 and municipal parking lot immediately after existing lighting is de-energized and service wires are removed by the Contractor.

THE FOLLOWING SECTION IS ADDED:

SECTION 654 – JCP&L FACILITY

654.01 DESCRIPTION

This Section describes the requirements for installing, relocating and removing Jersey Central Power and Light (JCP&L) electric utility facilities including conduits, manholes, transformer vaults, handholes, and appurtenances and also includes the requirements for transferring electric services.

The following is a list of electric utility work to be performed:

- Il lines must remain in service and cannot be de-energized. Install new 75' transmission pole (#40062) behind northeast wingwall. Install permanent overhead facilities on newly installed 75' pole. Pole #40062 is being relocated because the guide rail between the pole and the curb is being removed. The pole does not conflict with the Work and it may be relocated before or after the superstructure work. Plan construction operations assuming the pole will remain during the Work.
Time to complete: 7 days.

DP# 09173
Bid Date: 10/22/2009
3 Plan Sheets

**GORDON'S CORNER ROAD OVER ROUTE 9
FROM M.P. 3.620 TO M.P. 3.714
CONTRACT NO. 118003160
BRIDGE SUPERSTRUCTURE REPLACEMENT
TOWNSHIP OF MANALAPAN, MONMOUTH COUNTY
FEDERAL PROJECT NO. BH-0001(247)**

ADDENDUM NO. 1

Page 2 of 8

- Raise and / or temporarily remove approximately 9 spans of overhead street light secondaries along route 9 south of Gordons Corner Bridge in order to provide clearance for the reconstruction of NJDOT Bridge. De-energize transformer to cut off power supply to the lights in the commuter parking lot and along the ramps. Remove aerial low voltage secondary wire between Pole #BT2620MNT and JC4510MPN in the commuter parking lot.
Remove aerial low voltage secondary wire between Pole #BT2619MNT and JC4511MPN in the commuter parking lot.
Remove aerial low voltage secondary wire between Pole # BT2621MNTand #No ID along the exit ramp.
Remove aerial low voltage secondary wire between Pole # BT2622MNTand #JC22MPN along the Entrance ramp.
After Stage 3 Work:
Install aerial low voltage secondary wire between Pole #BT2620MNT and JC4510MPN in the commuter parking lot.
Install aerial low voltage secondary wire between Pole #BT2619MNT and JC4511MPN in the commuter parking lot.
Install aerial low voltage secondary wire between Pole # BT2621MNTand #No ID along the exit ramp.
Install aerial low voltage secondary wire between Pole # BT2622MNTand #JC22MPN along the Entrance ramp.
Except as specified in this Subsection, all electric lines must remain in service and cannot be de- energized.
Time to complete: 3 days to remove, 7 days to re-install

654.02 MATERIALS

Except for the materials noted below, JCP&L will supply all materials necessary for the work at no cost to the Contractor. Provide JCP&L written notice 30 days in advance of when materials will be required. Ensure the electric subcontractor takes delivery of the materials from JCP&L's storage facility within two weeks of the notice from JCP&L indicating that the material is available. Materials may be located at more than one JCP&L storage facility. If the electric subcontractor fails to take delivery, the material may not be available, and the electric subcontractor may be required to provide an additional request for materials. The Contractor is responsible for compensating the Department for any additional handling costs incurred by JCP&L resulting from the failure to take delivery within the time required.

The electric subcontractor is responsible for loading the material, delivering it to the job site, and all subsequent handling and delivery within the jobsite. Store and protect all materials received from JCP&L. Return and deliver all excess materials furnished by JCP&L to JCP&L's storage facility. Obtain a receipt for all material received from JCP&L, maintain a documented inventory of materials used and obtain a receipt for all material returned to JCP&L. Coordination for pick up of 75 ft. transmission pole can be made through JCP&L's Farmingdale Transmission Department and the materials required for the distribution transfers and pole construction can be picked up a JCP&L's Freehold Line Shop.

Provide materials as specified:

Tack Coat 64-22: PG 64-22.....	902.01.01
Concrete	903.03
Curing Materials.....	903.10

DP# 09173

Bid Date: 10/22/2009

3 Plan Sheets

**GORDON'S CORNER ROAD OVER ROUTE 9
FROM M.P. 3.620 TO M.P. 3.714
CONTRACT NO. 118003160
BRIDGE SUPERSTRUCTURE REPLACEMENT
TOWNSHIP OF MANALAPAN, MONMOUTH COUNTY
FEDERAL PROJECT NO. BH-0001(247)**

ADDENDUM NO. 1

Page 3 of 8

Controlled Low Strength Material (CLSM)	903.09
Hot Mix Asphalt (HMA)	902.02
Sealer, Hot-Poured	914.02
Polymerized Joint Adhesive	914.03

654.03 CONSTRUCTION

654.03.01 Electric

- A. Prequalification.** Only a prequalified electric subcontractor, approved by JCP&L, may construct and relocate JCP&L electric facilities. The following is a list of electric subcontractors that have been previously approved by JCP&L. This list is provided as information only, and is not an endorsement by the Department of any subcontractor. The Contractor is responsible for soliciting from a subcontractor that will be approved by JCP&L when preparing its Bid. Work restricted to the electric subcontractor does not preclude the Contractor from performing the work of layout, traffic control, sawcutting, pavement removal, temporary or final pavement restoration, and landscape restoration associated with the work of installing or relocating JCP&L electrical facilities.

Hawkeye, LLC
100 Marcus Blvd, suite 1
Hauppauge, NY 11788
Tel: 631-447-3100
Fax: 631-447-3830
Att: Mr. Charles Gravina - Mgr. Electric Operations
email: cgravina@hawkeyellc.com

Henkels & McCoy, Inc.
381 Cranberry Road
Farmingdale NJ 07727-3510
Tel: 732-919-7933
Fax: 732-919-7935
Att: Mr. Lou Ferenci ext. 103 or 104
Att: Mr. Bob Dougherty ext. 106
email: lferenci@henkels.com
email: rdougherty@henkels.com

JBL Electric Inc.
130 Furler Street
Totowa, NJ 07512
Tel: 973-774-4200
Fax: 973-237-0038
Att: Mr. Jim Leary - President

DP# 09173

Bid Date: 10/22/2009

3 Plan Sheets

**GORDON'S CORNER ROAD OVER ROUTE 9
FROM M.P. 3.620 TO M.P. 3.714
CONTRACT NO. 118003160
BRIDGE SUPERSTRUCTURE REPLACEMENT
TOWNSHIP OF MANALAPAN, MONMOUTH COUNTY
FEDERAL PROJECT NO. BH-0001(247)**

ADDENDUM NO. 1

Page 4 of 8

email: jleary@jblelectric.com

MYR (Harlan & The L.E. Myers Company)
1416 Trindle Road 3-A
Carlisle, PA 17015-
Tel: 717-243-4600
Fax: 717-243-3633
Att: Mr. Jon Arganbright
email: jarganbright@myrgroup.com

M.J. Electric, LLC
1047 Shoemaker Avenue
PO Box 310
Shoemakersville, PA 19555-0310
Tel: 610-562-7570 x 4802
Fax: 610-562-1375
Att: Mr. Mike Troutman
email: mtroutman@mjelectric.com

Asplundh
161 Second Street
Wilkes Barre, PA 18702-6934
Tel: 570-947-1101
Fax: 570-822-0770
Attn: Mr. Vincent Stanbro
email: v.stanbro@asplundh.com

Tri-M Group, LLC
PO Box 69
204 Gale Lane
Kennett Square, PA 19348-0069
Tel: 610-444-1001 ext 159
Fax: 484-731-0209
Attn: Mr. Ron Bauguess
email: rbauguess@tri-mgroup.com

Approved for underground work only:
J. Fletcher Creamer & Son, Inc.
1701 E. Linden Avenue
Linden, NJ 07036-1500
Tel: 908-925-3200

DP# 09173

Bid Date: 10/22/2009

3 Plan Sheets

**GORDON'S CORNER ROAD OVER ROUTE 9
FROM M.P. 3.620 TO M.P. 3.714
CONTRACT NO. 118003160
BRIDGE SUPERSTRUCTURE REPLACEMENT
TOWNSHIP OF MANALAPAN, MONMOUTH COUNTY
FEDERAL PROJECT NO. BH-0001(247)**

ADDENDUM NO. 1

Page 5 of 8

Fax: 908-925-3350
Att: Mr. Ted Paliwoda
email: tpaliwoda@jfcson.com

- B. Indemnification.** The Contractor agrees to indemnify and hold harmless JCP&L, its officers, employees and agents from liability and claims related to the work described under Section 654. This requirement does not establish JCP&L as a third party beneficiary; the provisions specified in Section 107.10 are unaltered.
- C. Scheduling of Work and Interruption to Utilities.** Provide the RE and the designated JCP&L representative with a detailed schedule of when the electric utility work will be performed. Indicate in the schedule for each activity the following information: the work locations; the number of crews; and whether the work will be performed during a day shift or night shift, or on weekends. Coordinate all electric utility work with the JCP&L representative, and notify the RE and the JCP&L representative at least two weeks prior to starting electric utility work. Do not interrupt existing electric service until approved by the JCP&L representative.

Weather conditions may prevent connections to existing systems between June 1 and September 30. Do not perform work which will require electric transmission service interruptions from June 1 through September 30 without the approval of JCP&L. JCP&L may extend this period based on weather conditions and system demand. Notify JCP&L at least one month in advance of commencing conductor work.

If service transfers are required, coordinate service transfers with the JCP&L representative. Notify the property owner and all tenants affected by service interruptions or transfers prior to making the service transfer. Minimize disruption to normal operations of existing facilities and minimize any interruption of electric service to JCP&L customers. Protect existing facilities during construction and installation of the service transfer.

- D. Quality Control and Quality Assurance.** Provide access to the work for the JCP&L representative at all times. Perform all electric utility work in a manner acceptable to the JCP&L representative. Perform all electric utility work in accordance with JCP&L standards and details.
- E. Safety.** Perform work in accordance with applicable OSHA regulations, N.J.S.A. 34:6-47 "High Voltage Proximity Act", and JCP&L safety standards.
- F. Abandonment and Removal.** Prior to beginning work, review the condition of all existing electric utility facilities noted to be removed with the JCP&L representative. If the JCP&L representative designates the material to be salvaged, remove the material and deliver it to a JCP&L storage facility. Remove and dispose of all other electrical utility material designated for removal.
- G. Excavation.** When excavation is required in areas having existing pavement and sidewalk, sawcut to the full depth of the existing pavement and sidewalk. Excavate trenches for conduit, manholes and vaults and appurtenances. Provide vertical sides for excavations within the traveled way, shoulder, sidewalk areas, and where existing facilities require protection. Remove unstable material at the bottom of the excavation and backfill with granular material. Do not excavate trenches more than 300 feet in advance of installing conduit unless approved by the RE. Provide and maintain trench crossings where necessary to maintain access. Do not leave trenches open overnight unless protected by temporary fencing or steel plates. Remove and dispose of excess or unsuitable material as specified in 202.03.07.

**GORDON'S CORNER ROAD OVER ROUTE 9
 FROM M.P. 3.620 TO M.P. 3.714
 CONTRACT NO. 118003160
 BRIDGE SUPERSTRUCTURE REPLACEMENT
 TOWNSHIP OF MANALAPAN, MONMOUTH COUNTY
 FEDERAL PROJECT NO. BH-0001(247)**

ADDENDUM NO. 1

Page 6 of 8

- H. Backfill.** Backfill with suitable material in lifts not exceeding 6 inches thick, loose measurement. If the backfill is predominantly granular material, compact the backfill material with a vibratory plate compactor. For material that is not predominately granular, compact the backfill material with a vibratory rammer compactor. If it is not possible to compact the backfill material, the Contractor may backfill with CLSM with the approval of the JCP&L representative. If using CLSM, install as specified in 601.03.01.F.
- I. Restoration.** Restore areas disturbed in the performance of electrical utility relocations to its original condition. In areas that are disturbed for which the plans provide final grading, pavement or landscaping, provide temporary restoration to the satisfaction of the RE. If open-cut trenching across a road is required, restore the pavement with in-kind construction.
- J. Field Testing.** Perform a high-potential test (also known as a dielectric voltage withstand test) on all cables and splices prior to energizing. Testing must be performed by a person who is qualified to operate the test equipment, and is familiar with the cable system. Ensure that the cables are disconnected from non-cable systems equipment, and that adequate physical clearances are maintained between all cable ends, energized cables, and electrical grounds and all other equipment during the test. Prior to performing the test, verify that all taps or laterals in the circuit are cleared. In the event hot poured compound filled splices and terminations are involved, do not perform testing until they have cooled to ambient temperature. Set the relays in the high voltage direct current test equipment to operate between 5 and 25 milliamperes leakage. The shape of the leakage curve under constant voltage is more important than the absolute leakage current of a "go or no go" withstand test result. The field test voltage is related to the final factory applied dc potentials using a factor of 80 percent.

Ensure the high potential test is performed in the presence of the JCP&L representative. Apply a direct current field test voltage according to the following table:

Field Test Values				
Rated Voltage	dc Hi-Pot Test		dc Hi-Pot Test	
Phase to	(15 Minutes)			
Phase	Wall - mils	Kv	Wall - mils	kV
5000	90	25	115	35
8000	115	35	140	45
15000	175	55	220	65
25000	260	80	320	95
28000	280	85	345	100
35000	345	100	420	125
46000	445	130	580	170
69000	650	195	650	195

Note: If the leakage current quickly stabilizes, the duration may be reduced to 10 minutes.

DP# 09173
Bid Date: 10/22/2009
3 Plan Sheets

**GORDON'S CORNER ROAD OVER ROUTE 9
FROM M.P. 3.620 TO M.P. 3.714
CONTRACT NO. 118003160
BRIDGE SUPERSTRUCTURE REPLACEMENT
TOWNSHIP OF MANALAPAN, MONMOUTH COUNTY
FEDERAL PROJECT NO. BH-0001(247)**

ADDENDUM NO. 1

Page 7 of 8

After the voltage has been applied and the test level reached, record the leakage current at one-minute intervals. If the leakage current decreases or stays steady after it has leveled off, the cable is considered satisfactory. If the leakage current starts to increase, excluding momentary spurts due to supply-circuit disturbances, extend the test to see if the rising trend continues. At the conclusion of the test, discharge the circuit through the test set and voltmeter circuit. After the potential drops below 95% of the test value, ground the cable and discharge the circuit. Leave the grounds on all conductors for a minimum of four times as long as the test voltage was applied.

Remove and replace cables that fail to meet the requirements of the direct current field test. The Contractor is responsible for reimbursing the Department for any additional material costs incurred by the Department resulting from the failure to meet the requirements of the direct current field test.

- K. Energizing Lines.** Energize lines with the guidance of the JCP&L representative. Prior to energizing lines, submit a request to JCP&L. Switching orders may only originate from JCP&L employees. Submit a request for permission to energize transmission lines 10 days in advance of when the work will be performed. Request permission to energize distribution lines in a manner that will permit the JCP&L representative to submit a request to JCP&L's Dispatch Office by noon the previous business day.
- L. As-builts.** Upon completion of the work, submit to JCP&L as-built drawings in accordance with JCP&L standards. Prints of construction drawings, marked to show the final location, are acceptable. Provide a copy of the as-built drawings to the RE.

654.04 MEASUREMENT AND PAYMENT

The Department will measure and make payment for Items as follows:

<i>Item</i>	<i>Pay Unit</i>
ELECTRIC UTILITY RELOCATION, JCP&L	LUMP SUM

THE FOLLOWING CHANGES ARE MADE TO THE PLANS:

ATTACHMENT 1	REPLACES ORIGINAL SHEET 4
ATTACHMENT 2	REPLACES ORIGINAL SHEET 12
ATTACHMENT 3	REPLACES ORIGINAL SHEET 16

DP# 09173

Bid Date: 10/22/2009

3 Plan Sheets

**GORDON'S CORNER ROAD OVER ROUTE 9
FROM M.P. 3.620 TO M.P. 3.714
CONTRACT NO. 118003160
BRIDGE SUPERSTRUCTURE REPLACEMENT
TOWNSHIP OF MANALAPAN, MONMOUTH COUNTY
FEDERAL PROJECT NO. BH-0001(247)**

ADDENDUM NO. 1

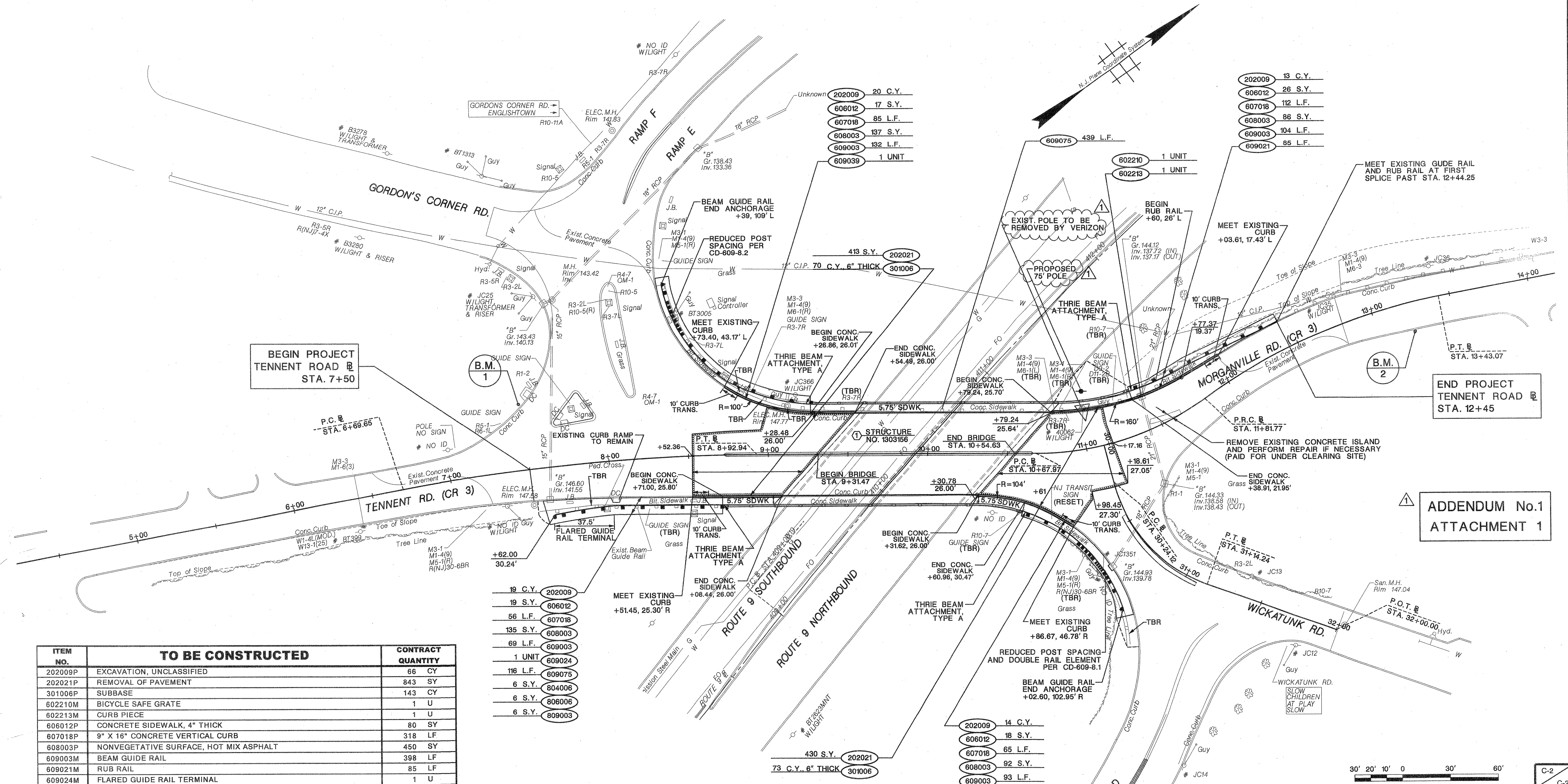
Page 8 of 8

THE FOLLOWING CHANGES ARE MADE TO THE PROPOSAL:

SEQUENCE NO.	STANDARD ITEM NO.	DESCRIPTION	REMARKS
90	654007P	ELECTRIC UTILITY RELOCATION, JCP&L	ITEM ADDED

These proposal changes are available from the NJDOT Bid Express web site as Amendment No. 1.

Revised Estimate- Distribution of Quantity Plan Sheets reflecting these changes will not be issued at this time, but all corrections will be made during the preparation of the As-Built plans.



ITEM NO.	TO BE CONSTRUCTED	CONTRACT QUANTITY
202009P	EXCAVATION, UNCLASSIFIED	66 CY
202021P	REMOVAL OF PAVEMENT	843 SY
301006P	SUBBASE	143 CY
602210M	BICYCLE SAFE GRATE	1 U
602213M	CURB PIECE	1 U
606012P	CONCRETE SIDEWALK, 4" THICK	80 SY
607018P	9" X 16" CONCRETE VERTICAL CURB	318 LF
608003P	NONVEGETATIVE SURFACE, HOT MIX ASPHALT	450 SY
609003M	BEAM GUIDE RAIL	398 LF
609021M	RUB RAIL	85 LF
609024M	FLARED GUIDE RAIL TERMINAL	1 U
609039M	BEAM GUIDE RAIL ANCHORAGE	2 U
609075M	REMOVAL OF BEAM GUIDE RAIL	671 LF
804006P	TOPSOILING, 4" THICK	27 SY
806006P	FERTILIZING AND SEEDING, TYPE A-3	27 SY
809003M	STRAW MULCHING	27 SY

19 C.Y.	202009
19 S.Y.	606012
56 L.F.	607018
135 S.Y.	608003
69 L.F.	609003
1 UNIT	609024
116 L.F.	609075
6 S.Y.	804006
6 S.Y.	806006
6 S.Y.	809003

MISCELLANEOUS STRUCTURES		
NO.	DESCRIPTION	STRUCTURE NO.
①	GORDON'S CORNER ROAD OVER ROUTE 9	1303156

B.M.1 - (GPS-3) REBAR SET
STATION 7+49.65, 41.30' L
ELEV. 146.65'

B.M.2 - (GPS-2) REBAR SET
STATION 13+25.24, 18.59' R
ELEV. 138.10'

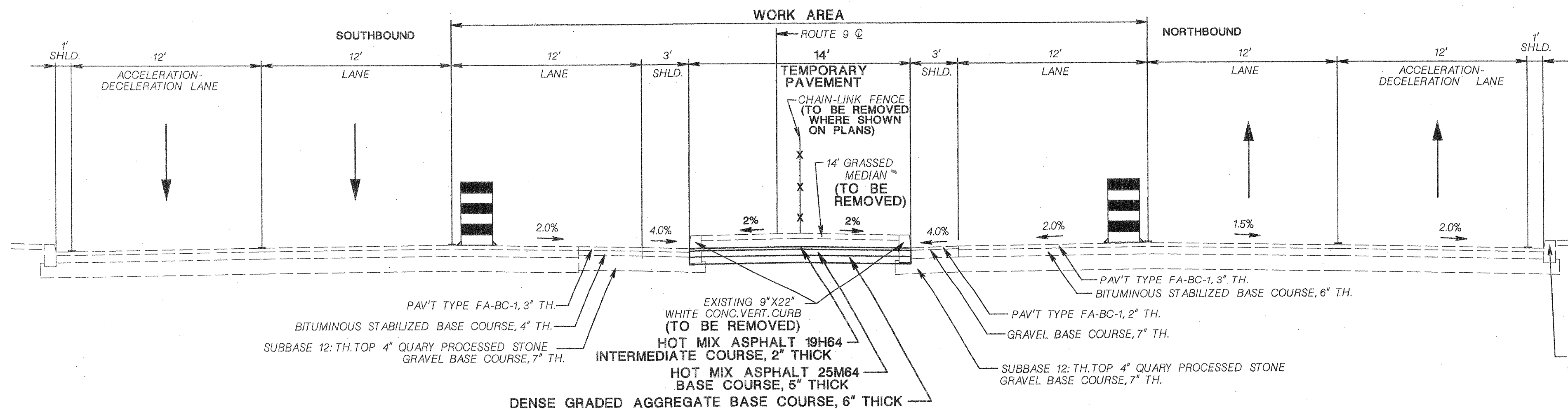
CMX
CERT. AUTH. NO. 24GA27926200
Joseph Dibuono
JOSEPH DIBUONO
N.J.P.L.S. LIC. NO. GS36239

NEW JERSEY DEPARTMENT OF TRANSPORTATION

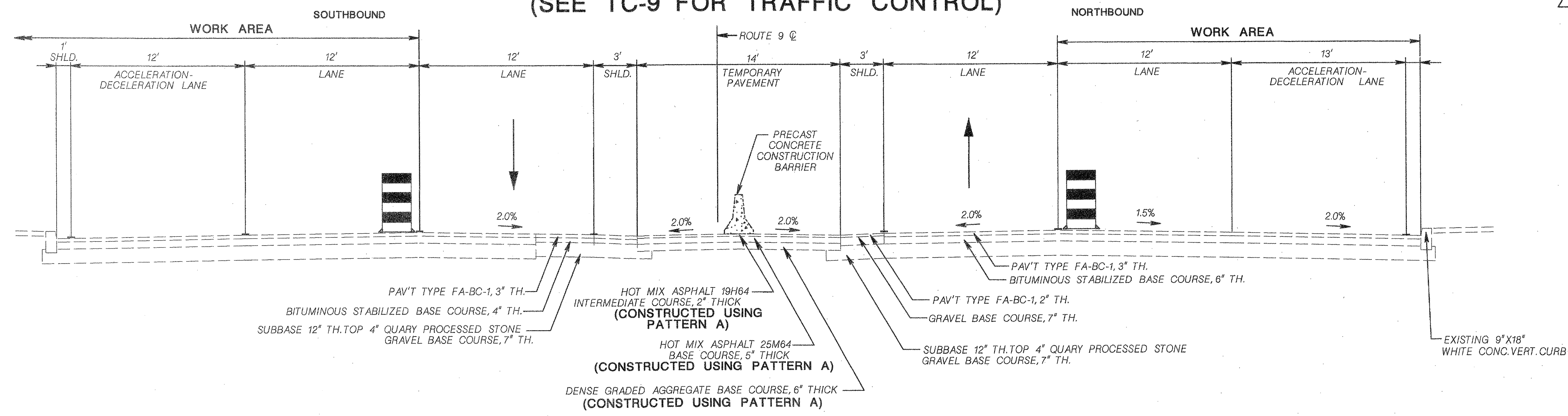
CONSTRUCTION PLANS

GORDON'S CORNER ROAD
OVER ROUTE 9
CONTRACT NO. 118003160

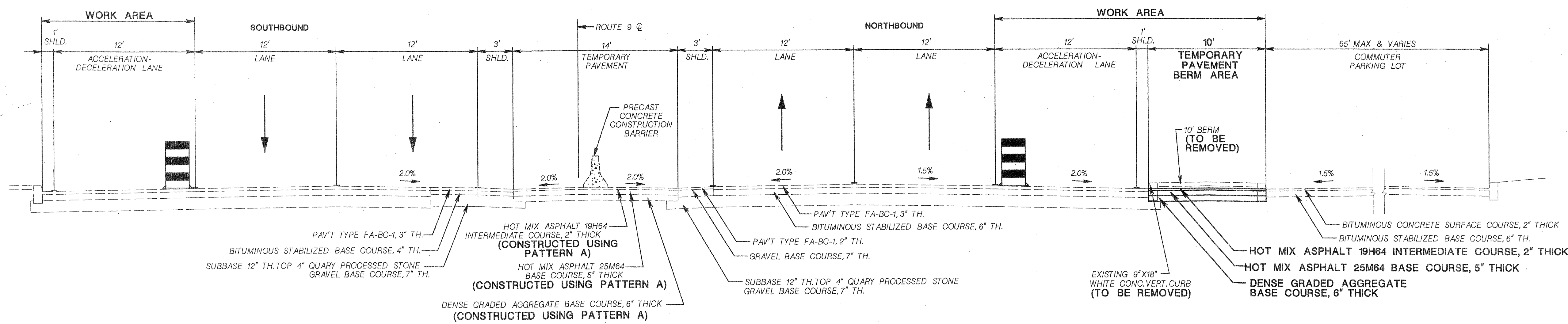
CMX
CERT. AUTH. NO. 24GA27926200
Patrice G. Malleus
PATRICE G. MALLEUS
N.J.P.E. LIC. NO. 38228



NIGHT-TIME CONSTRUCTION - PATTERN A
FACING NORTH ON ROUTE 9
 (SEE TC-9 FOR TRAFFIC CONTROL)



NIGHT-TIME CONSTRUCTION - PATTERN B
FACING NORTH ON ROUTE 9
 (SEE TC-10 FOR TRAFFIC CONTROL)



NIGHT-TIME CONSTRUCTION - PATTERN C
FACING NORTH ON ROUTE 9
 (SEE TC-11 FOR TRAFFIC CONTROL)

- TRAFFIC CONTROL SUMMARY**
- NIGHT-TIME LANE CLOSURES ARE PERMITTED ON ROUTE 9 DURING STAGES 1A, 1B, 2 AND 4 USING PATTERNS A, B AND C AS SPECIFIED IN THE SCHEDULE OF ALLOWABLE LANE CLOSURE HOURS ON THIS SHEET. GORDON'S CORNER ROAD MAY BE RESTRICTED TO EASTBOUND TRAFFIC ONLY DURING STAGE 1B USING NIGHT-TIME LANE CLOSURES AS SPECIFIED IN THE SCHEDULE OF ALLOWABLE LANE CLOSURE HOURS ON THIS SHEET.
 - PATTERN A SHALL BE USED FOR WORK ON THE MEDIAN, PIER AND OVER THE LEFT LANE OF ROUTE 9 NORTHBOUND AND SOUTHBOUND.
 - PATTERN B SHALL BE USED FOR WORK OVER THE RIGHT LANE OF ROUTE 9 NORTHBOUND AND SOUTHBOUND. WORK MAY ALSO BE PERFORMED AT THE SAME TIME OVER THE ACCELERATION/DECELERATION LANES AND AT THE ABUTMENTS. HOWEVER, PATTERN B SHOULD NOT BE USED IF NO WORK IS PROPOSED OVER THE RIGHT LANES.
 - PATTERN C SHALL BE USED FOR WORK OVER THE ACCELERATION/DECELERATION LANES AND AT THE ABUTMENTS.
 - PATTERN A MAY ALSO BE IMPLEMENTED FULL TIME FROM 7 DAYS BEFORE THE BEGINNING OF STAGE 3 TO 7 DAYS AFTER THE END OF STAGE 3.
 - ONLY ONE TRAFFIC PATTERN WILL BE APPROVED EACH NIGHT ON ROUTE 9 NB AND ROUTE 9 SB EXCEPT THAT PATTERN A MAY BE IMPLEMENTED FOR NIGHT-TIME CONSTRUCTION AT THE SAME TIME PATTERN C IS IN EFFECT FULL TIME FROM 7 DAYS BEFORE THE BEGINNING OF STAGE 3 TO 7 DAYS AFTER THE END OF STAGE 3.

STAGE 1A
 WORK TO BE PERFORMED DURING STAGE 1A INCLUDES THE REPAIR OF THE PIER AND ABUTMENTS; INSTALLATION, MONITORING AND REMOVAL OF THE ECE PROCESS; AND THE INSTALLATION OF TEMPORARY SHIELDING ON THE EXISTING BRIDGE. MAINTAIN PEDESTRIAN TRAFFIC ACROSS THE BRIDGE DURING STAGE 1A.

STAGE 1B
 DO NOT BEGIN STAGE 1B MORE THAN 7 DAYS BEFORE THE BEGINNING OF STAGE 2. MAINTAIN PEDESTRIAN TRAFFIC ACROSS THE BRIDGE DURING STAGE 1B. WORK TO BE PERFORMED DURING STAGE 1B INCLUDES: GORDON'S CORNER ROAD: REMOVING EXISTING CONCRETE CENTER ISLAND, ROUTE 9; PREPARATION FOR REMOVAL OF SUPERSTRUCTURE AND DECK AND INSTALLATION OF TEMPORARY SHIELDING.

STAGE 2
 DO NOT BEGIN STAGE 2 MORE THAN 14 DAYS BEFORE THE BEGINNING OF STAGE 3. MAINTAIN PEDESTRIAN TRAFFIC ACROSS THE BRIDGE UNTIL 7 DAYS BEFORE THE BEGINNING OF STAGE 3. WORK TO BE PERFORMED DURING STAGE 2 INCLUDES: GORDON'S CORNER ROAD: PREPARE THE NORTH SIDE OF THE BRIDGE FOR REMOVAL AND REMOVE EXISTING NORTHWEST AND NORTHEAST CONCRETE APPROACH ROADWAYS AND PREPARE SUBGRADE AS SPECIFIED ON SHEET 31 (B-5). NOT MORE THAN 7 DAYS BEFORE THE BEGINNING OF STAGE 3, CLOSE THE BRIDGE TO PEDESTRIAN TRAFFIC, REMOVE THE SOUTH PARAPET AND PREPARE THE SOUTH SIDEWALK AREA FOR REMOVAL AS SPECIFIED ON SHEET 31 (B-5). ROUTE 9: CONTINUE PREPARING SUPERSTRUCTURE AND DECK FOR REMOVAL, CONSTRUCT TEMPORARY MEDIAN CUTS. NOT MORE THAN 7 DAYS BEFORE THE BEGINNING OF STAGE 3, IMPLEMENT PATTERN C, CLOSE RAMPS D AND E AND A PORTION OF RAMP C AND PREPARE THE IDENTIFIED STAGING AREAS SUBJECT TO THE CLOSURE DURATIONS SPECIFIED IN 162.03.01 OF THE SPECIAL PROVISIONS. CONSTRUCT TEMPORARY LIGHTING AS SPECIFIED IN 162.03.04 OF THE SPECIAL PROVISIONS, IMMEDIATELY AFTER EXISTING LIGHTING IS REMOVED BY THE CONTRACTOR EVEN IF REMOVAL OCCURS MORE THAN 7 DAYS BEFORE THE BEGINNING OF STAGE 3. DO NOT CONSTRUCT TEMPORARY CURB CUTS ALONG COMMUTER PARKING LOT MORE THAN 7 DAYS BEFORE THE BEGINNING OF STAGE 3.

STAGE 3
 STAGE 3 BEGINS AT 6AM FRIDAY AND ENDS AT 6AM THE FOLLOWING MONDAY (72 HOURS) FOR PURPOSES OF SETTING DURATIONS OF OTHER WORK ACTIVITIES. ALLOWABLE LANE CLOSURE HOURS FOR ROUTE 9 NB AND SB DURING STAGE 3 ARE AS SPECIFIED IN THE SCHEDULE OF ALLOWABLE LANE CLOSURE HOURS UNDER "ROUTE 9 WEEKEND REPLACEMENT OF SUPERSTRUCTURE USING PRE-CAST MODULES". ROUTE 9 MAY BE RESTRICTED TO ONE LANE NB AND ONE LANE SB FOR THE DURATIONS SPECIFIED. ALLOWABLE CLOSURE HOURS FOR GORDON'S CORNER ROAD DURING STAGE 3 ARE AS SPECIFIED IN THE SCHEDULE OF ALLOWABLE LANE CLOSURE HOURS. GORDON'S CORNER ROAD MAY BE CLOSED AND TRAFFIC DETOURED FOR THE DURATION SPECIFIED.

THE WORK TO BE COMPLETED DURING STAGE 3 INCLUDES THE REMOVAL AND REPLACEMENT OF THE SUPERSTRUCTURE AND DECK OF THE BRIDGE AND THE REMOVAL AND REPLACEMENT OF THE CONCRETE BRIDGE APPROACHES. GORDON'S CORNER ROAD MUST BE REOPENED USING THE TRAFFIC PATTERN FOR STAGE 4 BY THE END OF THE SPECIFIED CLOSURE DURATION.

STAGE 3 WILL BE COMPLETED IN ONE WEEKEND. THE DEPARTMENT WILL NOT APPROVE A CONSTRUCTION SCHEDULE WHICH REQUIRES MORE THAN ONE WEEKEND TO COMPLETE STAGE 3 CONSTRUCTION.

STAGE 4
 THE BRIDGE MAY REMAIN CLOSED TO PEDESTRIAN TRAFFIC DURING STAGE 4. WORK TO BE PERFORMED DURING STAGE 4 INCLUDES: GORDON'S CORNER ROAD: CONSTRUCT WINGWALLS, SIDEWALKS, PARAPETS, FENCE AND APPROACH GUIDERAIL.

ROUTE 9: INSTALL PRECAST CHEEK WALLS. APPLY EPOXY WATERPROOFING AND CONCRETE SURFACE TREATMENT. REMOVE TEMPORARY SHIELDING. RESTORE TEMPORARY MEDIAN CUTS WITHIN 14 DAYS AFTER THE END OF STAGE 3. REMOVE FULL TIME PATTERN C AND REOPEN RAMPS C, D AND E FOR PUBLIC USE WITHIN 7 DAYS AFTER THE END OF STAGE 3. RECONSTRUCT COMMUTER PARKING LOT AS SPECIFIED IN 162.03.01 OF THE SPECIAL PROVISIONS.

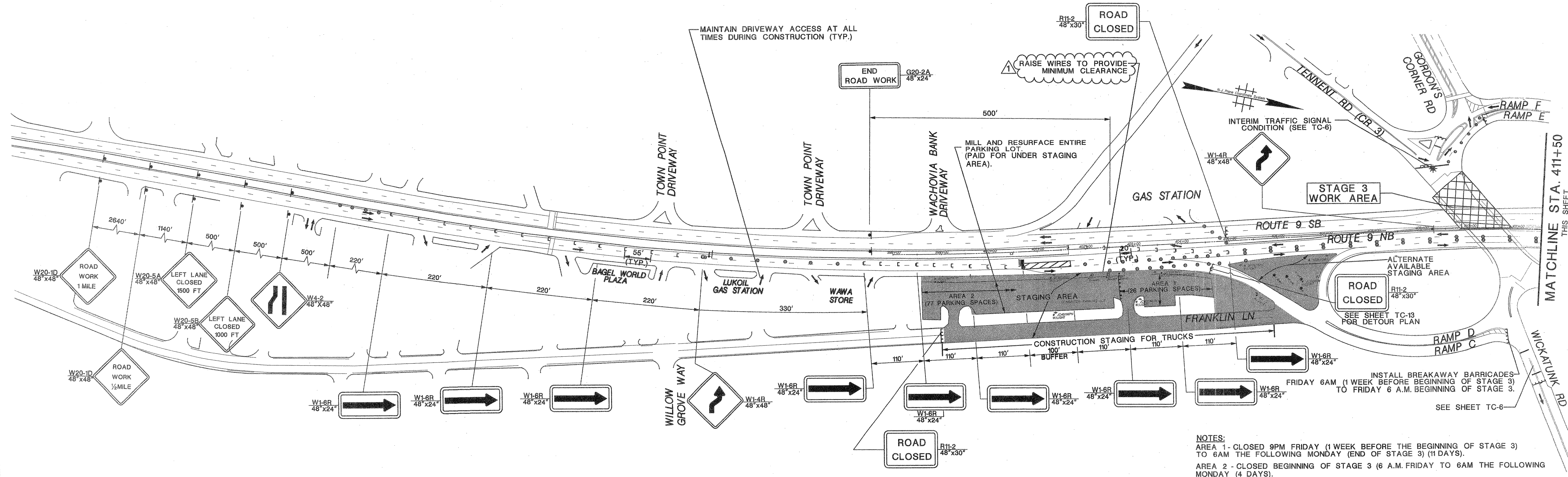
ADDENDUM No.1
 ATTACHMENT 2

N.T.S.

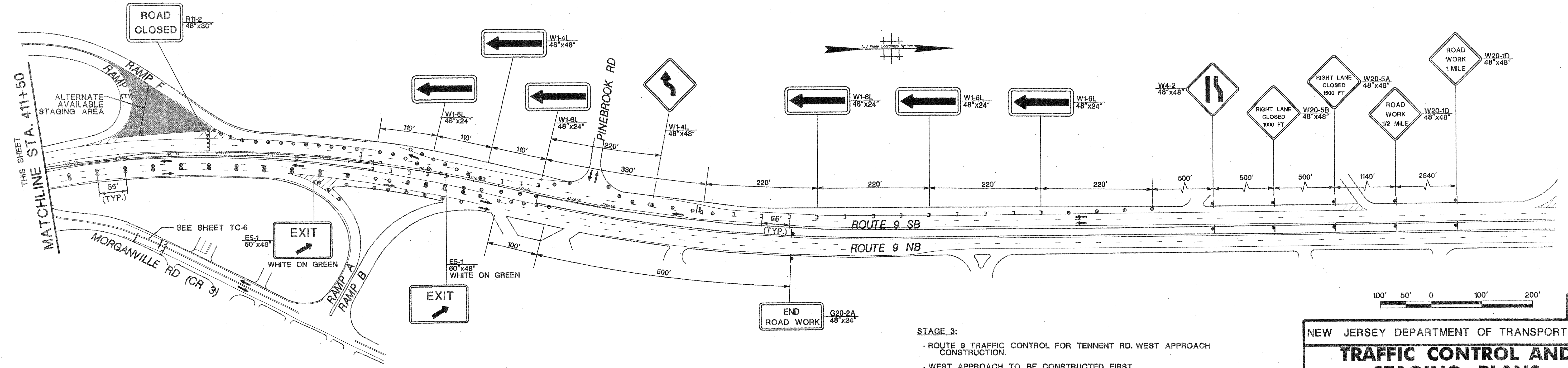
NEW JERSEY DEPARTMENT OF TRANSPORTATION

TRAFFIC CONTROL AND STAGING PLANS
 GORDON'S CORNER ROAD
 OVER ROUTE 9
 CONTRACT NO. 118003160

CMX
 CERT. AUTH. NO. 24GA27926200
Patrice G. Malleus
 PATRICE G. MALLEUS
 N.J.P.E. LIC. NO. 38228

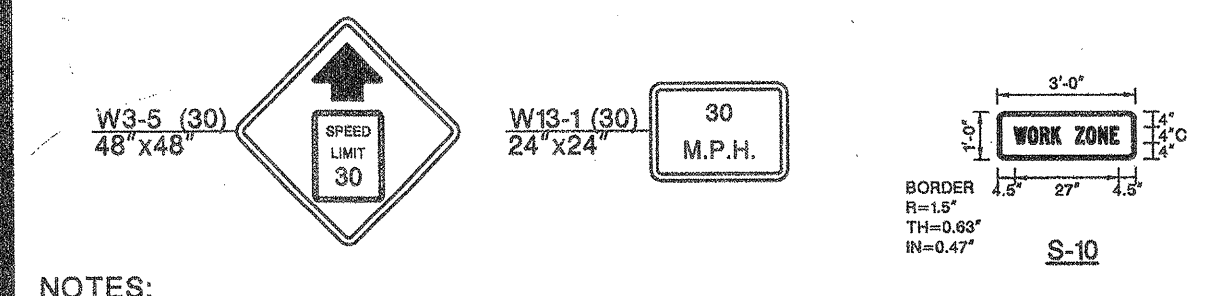


NOTES:
 AREA 1 - CLOSED 9PM FRIDAY (1 WEEK BEFORE THE BEGINNING OF STAGE 3) TO 6AM THE FOLLOWING MONDAY (END OF STAGE 3) (11 DAYS).
 AREA 2 - CLOSED BEGINNING OF STAGE 3 (6 A.M. FRIDAY TO 6AM THE FOLLOWING MONDAY (4 DAYS).



**ADDENDUM No.1
ATTACHMENT 3**

- STAGE 3:**
- ROUTE 9 TRAFFIC CONTROL FOR TENNENT RD. WEST APPROACH CONSTRUCTION.
 - WEST APPROACH TO BE CONSTRUCTED FIRST.
 - DURING WEST APPROACH CONSTRUCTION, ROUTE 9 SB LANES TO BE CLOSED TO ALL TRAFFIC. ALL TRAFFIC TO BE SHIFTED TO NB LANES.
1. PRIOR TO STAGE 3 INSTALL ALL ADVANCE WARNING SIGNS AND TRAFFIC CONTROL DEVICES AS SHOWN ON THIS PLAN.
 2. SHIFT ROUTE 9 TRAFFIC.
 3. REMOVE AND REPLACE WEST SPANS. IMPLEMENT TEMPORARY TRAFFIC STOPPAGE TO CROSS SPMT'S AND SHIFT PATTERN.



NOTES:
 ADDITIONAL SIGNS TO BE AVAILABLE. RE SHALL DETERMINE ADVISORY SPEED LIMIT AND LOCATION FOR ADDITIONAL SIGNS.

STAGE 3 - WEEKEND SUPERSTRUCTURE REPLACEMENT

NEW JERSEY DEPARTMENT OF TRANSPORTATION

TRAFFIC CONTROL AND STAGING PLANS

GORDONS CORNER ROAD OVER ROUTE 9

CONTRACT NO. 118003160

CMX
 CERT. AUTH. NO. 24GA27926200
Patrice G. Malleus
 PATRICE G. MALLEUS
 N.J.P.E. LIC. NO. 38228

Work Request: 50690970

**FirstEnergy - CREWS System
Work Request Cover Sheet**

9/24/2009
8:16 AM
Page 1 of 1

Work Request: 50690970

SAP Notification No: 319144240

SAP Order No: 12614557

WR Type Code: DHWY

Customer Cat: NA

Substation: 80046 GORDONS CORNER SUB

Circuit: 0178 47379-C

Designer: AWG GILLESPIE, ANDREW W

WR Name: NJ MOTOR VEHICLE COMMISSION,

	DATE	INITIALS
Construction Complete:		
Built As-Designed?	Yes <input type="checkbox"/> No <input type="checkbox"/>	
All Material Issued/Returned?	Yes <input type="checkbox"/> No <input type="checkbox"/>	
Print Sent to Engineering:		

District: Freehold

Designer Phone: (732) 212 - 4220 x

Description:

NJDOT BILLABLE WORK ORDER TO TEMPORILY RAISE ⁹ SPANS OF SECONDARIES ALONG RTE 9 AT THE COMUTER PARKING LOT / GORDONS CORNER BRIDGE. THIS IS NEEDED IN ORDER FOR VERIZON TO RAISE THEIR CONDUCTORS TO MEET REQUIRED CLEARANCE FOR BRIDGE REPLACEMENT. ALSO REPLACE BT40062MPN (45') ON BRIDGE WITH 75' TRANSMISSION POLE BEHIND BRIDGE WALL TO KEEP EXISTING WIRE ELEVATIONS. STATE CONTRACTOR TO PERFORM ALL WORK WITH MATERIALS TO FREEHOLD LINE.

* 04/01/2009 10:56:02 W. Uellner (J6880) Phone (732)212-4246 250-4246* PROVIDE BILLING WORK ORDER TO RELOCATE A PORTION OF A POLE LINE DUE TO A NJDOT BRIDGE PROJECT LOCATED AT RT 9 AND GORDENS CORNER RD

Service Street No: 48

Street No Frac:

Street Name: SANDPIPER DR

Unit #:

Block:

Lot:

City:

ENGLISHTOWN

Customer Home #: (609) 530 - 5700 x.

Customer Work #: () - x.

OUPS / One Call #: _____

Clearance Control #: _____

Flagging: _____

Forestry: _____

Foreign Utilities: _____

Permit: _____

Special Equipment Needs: _____

Upstream Devices: _____

Additional Notes: _____

WR No: 50690970 Revision No: 1 Operating Area: FH
 Company: JL WR Type: DHWY SAP Notification No: 319144240
 SAP Order No: 12614557 Job & Contract: No SAP Network ID:
 SAP Activity ID: SAP Cost Collector Type: UNIQUE
 WR Name: NJ MOTOR VEHICLE COMMISSION,
 Address: SANDPIPER DR
 City/Town: ENGLISHTOWN
 Est Start Date: Oct 10,2009 Requested Comp Date: Nov 01,2009

Material Item	Src	Material Description	R/L	Issd	Not Issd	Res Var	Tot. As-B
19338	S	INS GUY STRAIN FG 36" 30KLBS W/ Y-CLEVIS	R	0	0	2	2
2273	S	BRACKET SPACER CAB INSL 3PH VERT W/INSL	L	0	0	1	1
27400523	S	INS SUSP POLY 15KV 12.5"	L	0	0	6	6
27418223	S	INS PIN PORC 15KV C-NECK ANSI 55-3	L	0	0	6	6
3143	S	INS SPOOL PORC 15KV AND BELOW	L	0	0	3	3
97300873	S	CROSSARM WOOD 3-1/2" X 4-1/2" X 8'	L	0	0	2	2
21600703	C	WIRE GUY ZN-AL STEEL 3/8" EHS 7STR	L	0	0	110	110
2192	C	HELIX 8" DBL ANCHOR 7000 FT/LB EXT DR	L	0	0	2	2
22127553	C	CLAMP STR LINE AL #4-4/0 AAC & ACSR	L	0	0	6	6
27424703	C	INS SPOOL PORC/POLY 600V 3" 3000LB 53-2	L	0	0	3	3
93302003	C	BOLT CARRIAGE 3/8"X 4-1/2" GALV	L	0	0	4	4
93303993	C	BOLT DA GALV 5/8" DIA X 18"	L	0	0	3	3
93334363	C	BOLT MACH SQ HD GALV 5/8" X 10"	L	0	0	2	2
93334443	C	BOLT MACH SQ HD GALV 5/8" X 12"	L	0	0	8	8
93334523	C	BOLT MACH SQ HD GALV 5/8" X 14"	L	0	0	2	2
93510863	C	WASHER FLAT-RD GALV 7/16"DIA 3/8"BOLT	L	0	0	4	4
93519063	C	WASHER FLAT-SQ 2-1/4" 5/8" & 3/4"BOLT	L	0	0	28	28
93603363	C	EYENUT OVAL 5/8" GALV	L	0	0	6	6
93809103	C	SCREW LAG SQ-HD 1/2"X 4"LG TWIST DR	L	0	0	2	2
93809573	C	SCREW LAG SQ-HD 1/2"X 5"LG FETTER PT	L	0	0	2	2
95223793	C	PLATE POLE-EYE 2-HL GALV 15KLB	L	0	0	2	2
95228833	C	GUARD GUY 8" X 2" DIA YELLOW	L	0	0	2	2
95233803	C	ROD ANCHOR TRI-EYE PISA 1" X 7'	L	0	0	2	2
95714773	C	GRIP PREF GUY 3/8" BEZINAL	L	0	0	4	4
95941243	C	PIN INSL STEEL X-ARM 5"	L	0	0	6	6
95947873	C	RACK 3-SPOOL OPEN WIRE	L	0	0	1	1
97901953	C	BRACE XARM 4/8 FT FLAT WOOD 38"SP 18"DP	L	0	0	4	4

Work Request: 50690970.1

**FirstEnergy - CREWS System
Construction Order Detail**

9/24/2009

Design

8:16 AM

Page 1 of 3

WR No: 50690970 Operating Area: FH
 Revision No: 1 WR Type: DHWY
 Company: JL SAP Notification No: 319144240
 SAP Order No: 12614557 SAP Network ID:
 SAP Activity ID: SAP Cost Collector Type: UNIQUE
 WR Name: NJ MOTOR VEHICLE COMMISSION,
 Address: SANDPIPER DR
 City: ENGLISHTOWN
 Estimated Start: 10/10/09 Requested Completion: 11/01/09

P/S Work Code From Tax District
 P/1 OH 00002 Site No: BT2618MPN

(Bold indicates excluded CU costs.)

<u>Compatible Unit</u>	<u>Description</u>	<u>CC</u>	<u>HC</u>	<u>Cat</u>	<u>CM</u>	<u>CL</u>	<u>Action</u>	<u>Qty.</u>	<u>Action</u>	<u>Qty.</u>
DS-898825-CBL	TRANSFER SECONDARY-TPX/QPX-PER CABLE	88	C	M	N	N	Install	3		
DS-898881	WORK AREA PROTECTION-PER JOB SITE-PER DAY	84	C	M	N	N	Install	2		
DS-898993	* GENERAL LABOR (DS)-3 MAN CREW-PER 1/4 HR	88	C	M	N	N	Install	16		

P/S Work Code From Tax District
 P/2 OH 00002 Site No: BT2619MPN

(Bold indicates excluded CU costs.)

<u>Compatible Unit</u>	<u>Description</u>	<u>CC</u>	<u>HC</u>	<u>Cat</u>	<u>CM</u>	<u>CL</u>	<u>Action</u>	<u>Qty.</u>	<u>Action</u>	<u>Qty.</u>
DS-898825-CBL	TRANSFER SECONDARY-TPX/QPX-PER CABLE	88	C	M	N	N	Install	3		
DS-898881	WORK AREA PROTECTION-PER JOB SITE-PER DAY	84	C	M	N	N	Install	2		
DS-898993	* GENERAL LABOR (DS)-3 MAN CREW-PER 1/4 HR	88	C	M	N	N	Install	16		

P/S Work Code From Tax District
 P/3 OH 00002 Site No: BT2620MPN

(Bold indicates excluded CU costs.)

<u>Compatible Unit</u>	<u>Description</u>	<u>CC</u>	<u>HC</u>	<u>Cat</u>	<u>CM</u>	<u>CL</u>	<u>Action</u>	<u>Qty.</u>	<u>Action</u>	<u>Qty.</u>
DS-898825-CBL	TRANSFER SECONDARY-TPX/QPX-PER CABLE	88	C	M	N	N	Install	3		
DS-898881	WORK AREA PROTECTION-PER JOB SITE-PER DAY	84	C	M	N	N	Install	2		
DS-898993	* GENERAL LABOR (DS)-3 MAN CREW-PER 1/4 HR	88	C	M	N	N	Install	16		

P/S Work Code From Tax District
 P/4 OH 00002 Site No: BT2621MPN

(Bold indicates excluded CU costs.)

<u>Compatible Unit</u>	<u>Description</u>	<u>CC</u>	<u>HC</u>	<u>Cat</u>	<u>CM</u>	<u>CL</u>	<u>Action</u>	<u>Qty.</u>	<u>Action</u>	<u>Qty.</u>
DS-898825-CBL	TRANSFER SECONDARY-TPX/QPX-PER CABLE	88	C	M	N	N	Install	3		
DS-898881	WORK AREA PROTECTION-PER JOB SITE-PER DAY	84	C	M	N	N	Install	2		
DS-898993	* GENERAL LABOR (DS)-3 MAN CREW-PER 1/4 HR	88	C	M	N	N	Install	16		

P/S Work Code From Tax District
 P/5 OH 00002 Site No: BT2622MPN

(Bold indicates excluded CU costs.)

<u>Compatible Unit</u>	<u>Description</u>	<u>CC</u>	<u>HC</u>	<u>Cat</u>	<u>CM</u>	<u>CL</u>	<u>Action</u>	<u>Qty.</u>	<u>Action</u>	<u>Qty.</u>
DS-898825-CBL	TRANSFER SECONDARY-TPX/QPX-PER CABLE	88	C	M	N	N	Install	3		
DS-898881	WORK AREA PROTECTION-PER JOB SITE-PER DAY	84	C	M	N	N	Install	2		
DS-898993	* GENERAL LABOR (DS)-3 MAN CREW-PER 1/4 HR	88	C	M	N	N	Install	16		

Work Request: 50690970.1

**FirstEnergy - CREWS System
Construction Order Detail**

9/24/2009

Design

8:16 AM

Page 2 of 3

P/S Work Code From Tax District
P/6 OH 000002

Site No: JC22MPN

(Bold Indicates excluded CU costs.)

<u>Compatible Unit</u>	<u>Description</u>	<u>CC</u>	<u>HC</u>	<u>Cat</u>	<u>CM</u>	<u>CL</u>	<u>Action</u>	<u>Qty.</u>	<u>Action</u>	<u>Qty.</u>
DS-898825-CBL	TRANSFER SECONDARY-TPX/QPX-PER CABLE	88	C	M	N	N	Install	3	_____	_____
DS-898881	WORK AREA PROTECTION-PER JOB SITE-PER DAY	84	C	M	N	N	Install	2	_____	_____
DS-898993	* GENERAL LABOR (DS)-3 MAN CREW-PER 1/4 HR	88	C	M	N	N	Install	16	_____	_____

<u>P/S</u>	<u>Work Code</u>	<u>From Tax District</u>	<u>To Tax District</u>	<u>Length</u>
S/7	OH	000002	000002	140

Site No: From BT2618MPN To BT2619MPN

<u>P/S</u>	<u>Work Code</u>	<u>From Tax District</u>	<u>To Tax District</u>	<u>Length</u>
S/8	OH	000002	000002	207

Site No: From BT2619MPN To BT2620MPN

<u>P/S</u>	<u>Work Code</u>	<u>From Tax District</u>	<u>To Tax District</u>	<u>Length</u>
S/9	OH	000002	000002	180

Site No: From BT2620MPN To BT2621MPN

<u>P/S</u>	<u>Work Code</u>	<u>From Tax District</u>	<u>To Tax District</u>	<u>Length</u>
S/10	OH	000002	000002	190

Site No: From BT2621MPN To BT2622MPN

<u>P/S</u>	<u>Work Code</u>	<u>From Tax District</u>	<u>To Tax District</u>	<u>Length</u>
S/11	OH	000002	000002	30

Site No: From BT2622MPN To JC22MPN

P/S Work Code From Tax District
 P/12 OH 000002

Site No: BT40062MPN

(Bold indicates excluded CU costs.)

Compatible Unit	Description	CC	HC	Cat	CM	CL	Action	Qty.	Action	Qty.
DS-140300	CROSSARM-DOUBLE 8' W/4 BRACES (28" LONG)	91	C	C	N	N	Scrap	1		
DS-140300	CROSSARM-DOUBLE 8' W/4 BRACES (28" LONG)	86	C	C	N	N	Install	1		
DS-145510	ANCHOR 8" TWIN HELIX W/ 1" ROD - TRI EYE - (7K FT/LB TORQ) (NJ/PA)	86	C	C	N	N	Install	2		
DS-150602	GUY-DOWN PRIMARY - 3/8" EHS (INCL MARKER)(W/36"Y-CLEVIS INS)(NJ/PA)	86	C	C	N	N	Install	2		
DS-165900	PIN L SHANK FWOOD XARM 5" HGT. 5/8"X5-3/4"	86	C	C	N	N	Install	6		
DS-165950	PIN L SHANK FWOOD XARM 8" HGT 5/8"X5-3/4"	91	C	C	N	N	Scrap	6		
DS-170325	RACK- OPEN WIRE SECONDARY 3-WIRE	86	C	C	N	N	Install	1		
DS-170325	RACK- OPEN WIRE SECONDARY 3-WIRE	91	C	C	N	N	Scrap	1		
DS-210100	INSULATOR PIN TYPE 15 KV CLASS 55-3 "C" NECK	91	C	C	N	N	Scrap	6		
DS-210100	INSULATOR PIN TYPE 15 KV CLASS 55-3 "C" NECK	86	C	C	N	N	Install	6		
DS-510730	BRACKET-AERIAL SPACER-COND- 3PH VERT- FG ANGLE -15KV (MAINTENANCE)(NJ/PA)	86	C	C	N	N	Install	1		
DS-510730	BRACKET-AERIAL SPACER-COND- 3PH VERT- FG ANGLE -15KV (MAINTENANCE)(NJ/PA)	91	C	C	N	N	Scrap	1		
DS-575500	DEADEND ASSEMBLY #4-4/0 ACSR 15 KV PRI (CLAMP & INSULATOR)	91	C	C	N	N	Scrap	3		
DS-575500	DEADEND ASSEMBLY #4-4/0 ACSR 15 KV PRI (CLAMP & INSULATOR)	86	C	C	N	N	Install	6		
DS-640402	MAKE/CUT TAPS AT POLE	86	C	C	N	N	Install	3		
DS-861420	CHIPPING CONCRETE-PER CU FT (PLACE ON POINT-SPECIFY QTY)	86	C	C	N	N	Install	6		
DS-898805-H	TRANSFER PRIMARY-4/0 & UP-PER CONDUCTOR	86	C	C	N	N	Install	6		
DS-898825-CBL	TRANSFER SECONDARY-TPX/QPX-PER CABLE	86	C	C	N	N	Install	3		
DS-898845-SLO	TRANSFER STREET LIGHT / LUMINAIRE	86	C	C	N	N	Install	1		
DS-898865	* CUT POLE TOP-PER POLE	86	C	C	N	N	Install	1		
DS-898881	WORK AREA PROTECTION-PER JOB SITE-PER DAY	84	C	C	N	N	Install	3		
DS-898990-3	SWITCHING-OVHD OR UNDG -3 MAN CREW-PER 1/4 HR	86	C	C	N	N	Install	64		

Work Request: 50690970.1

FirstEnergy - CREWS System

9/24/2009

Design

Construction Order Compatible Unit Summary

8:16 AM

Page 1 of 1

WR No:	50690970	Operating Area:	FH
Revision No:	1	WR Type:	DHWY
Company:	JL	SAP Notification No:	319144240
SAP Order No:	12614557	SAP Network ID:	
SAP Activity ID:		SAP Cost Collector Type:	UNIQUE
WR Name:	NJ MOTOR VEHICLE COMMISSION,		
Address:	SANDPIPER DR		
City:	ENGLISHTOWN		
Estimated Start:	10/10/09	Requested Completion:	11/01/09

Compatible Units

(Bold indicates excluded CU costs.)

<u>Compatible Unit</u>	<u>Description</u>	<u>HC</u>	<u>Cat</u>	<u>CM</u>	<u>CL</u>	<u>Action</u>	<u>Qty</u>
DS-140300	CROSSARM-DOUBLE 8' W/4 BRACES (26" LONG)	C	C	N	N	Scrap	1
DS-140300	CROSSARM-DOUBLE 8' W/4 BRACES (26" LONG)	C	C	N	N	Install	1
DS-145510	ANCHOR 8" TWIN HELIX W/ 1" ROD -TRI EYE - (7K FT/LB TORQ) (NJ/PA)	C	C	N	N	Install	2
DS-150602	GUY-DOWN PRIMARY - 3/8" EHS (INCL MARKER)(W/36"Y-CLEVIS INS)(NJ/PA)	C	C	N	N	Install	2
DS-165900	PIN L SHANK F/WOOD XARM 5" HGT 5/8"X5-3/4"	C	C	N	N	Install	6
DS-165950	PIN L SHANK F/WOOD XARM 8" HGT 5/8"X5-3/4"	C	C	N	N	Scrap	6
DS-170325	RACK- OPEN WIRE SECONDARY 3-WIRE	C	C	N	N	Install	1
DS-170325	RACK- OPEN WIRE SECONDARY 3-WIRE	C	C	N	N	Scrap	1
DS-210100	INSULATOR PIN TYPE 15 KV CLASS 55-3 "C" NECK	C	C	N	N	Install	6
DS-210100	INSULATOR PIN TYPE 15 KV CLASS 55-3 "C" NECK	C	C	N	N	Scrap	6
DS-510730	BRACKET-AERIAL SPACER-COND- 3PH VERT- FG ANGLE -15KV (MAINTENA	C	C	N	N	Scrap	1
DS-510730	BRACKET-AERIAL SPACER-COND- 3PH VERT- FG ANGLE -15KV (MAINTENA	C	C	N	N	Install	1
DS-575500	DEADEND ASSEMBLY #4-4/0 ACSR 15 KV PRI (CLAMP & INSULATOR)	C	C	N	N	Install	6
DS-575500	DEADEND ASSEMBLY #4-4/0 ACSR 15 KV PRI (CLAMP & INSULATOR)	C	C	N	N	Scrap	3
DS-640402	MAKE/CUT TAPS AT POLE	C	C	N	N	Install	3
DS-861420	CHIPPING CONCRETE-PER CU FT (PLACE ON POINT-SPECIFY QTY)	C	C	N	N	Install	6
DS-898805-H	TRANSFER PRIMARY-4/0 & UP-PER CONDUCTOR	C	C	N	N	Install	6
DS-898825-CBL	TRANSFER SECONDARY-TPX/QPX-PER CABLE	C	C	N	N	Install	3
DS-898825-CBL	TRANSFER SECONDARY-TPX/QPX-PER CABLE	C	M	N	N	Install	18
DS-898845-SLO	TRANSFER STREET LIGHT / LUMINAIRE	C	C	N	N	Install	1
DS-898865	* CUT POLE TOP-PER POLE	C	C	N	N	Install	1
DS-898881	WORK AREA PROTECTION-PER JOB SITE-PER DAY	C	C	N	N	Install	3
DS-898881	WORK AREA PROTECTION-PER JOB SITE-PER DAY	C	M	N	N	Install	12
DS-898990-3	SWITCHING-OVHD OR UNGD -3 MAN CREW-PER 1/4 HR	C	C	N	N	Install	64
DS-898993	* GENERAL LABOR (DS)-3 MAN CREW-PER 1/4 HR	C	M	N	N	Install	96