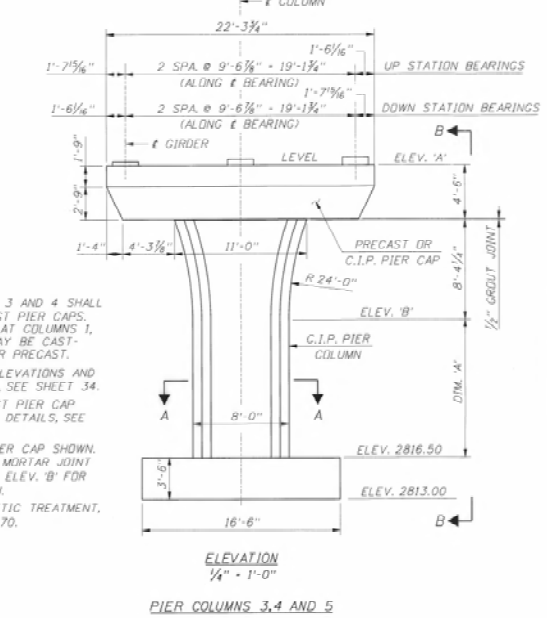
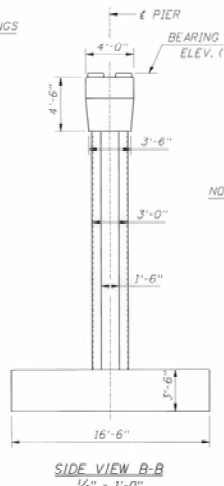
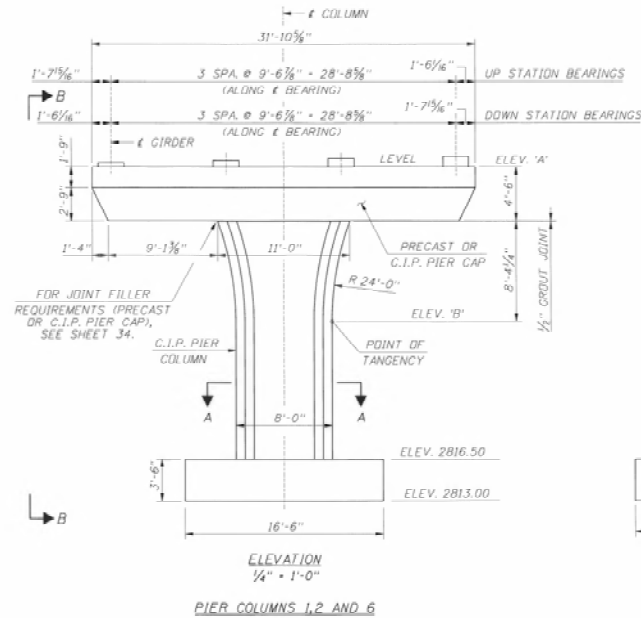
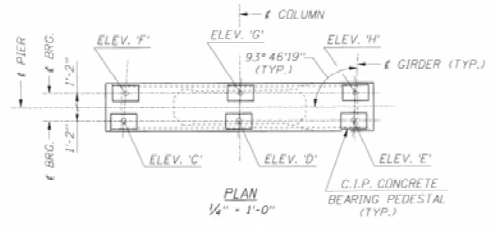
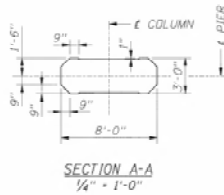
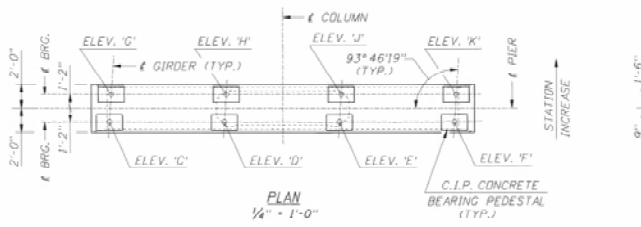


REVISIONS		DESIGNED	SCALE	DATE	PROJECT NO.	BRIDGE REVISION MASTER KEY	
NO.	DATE	BY	DESCRIPTION				

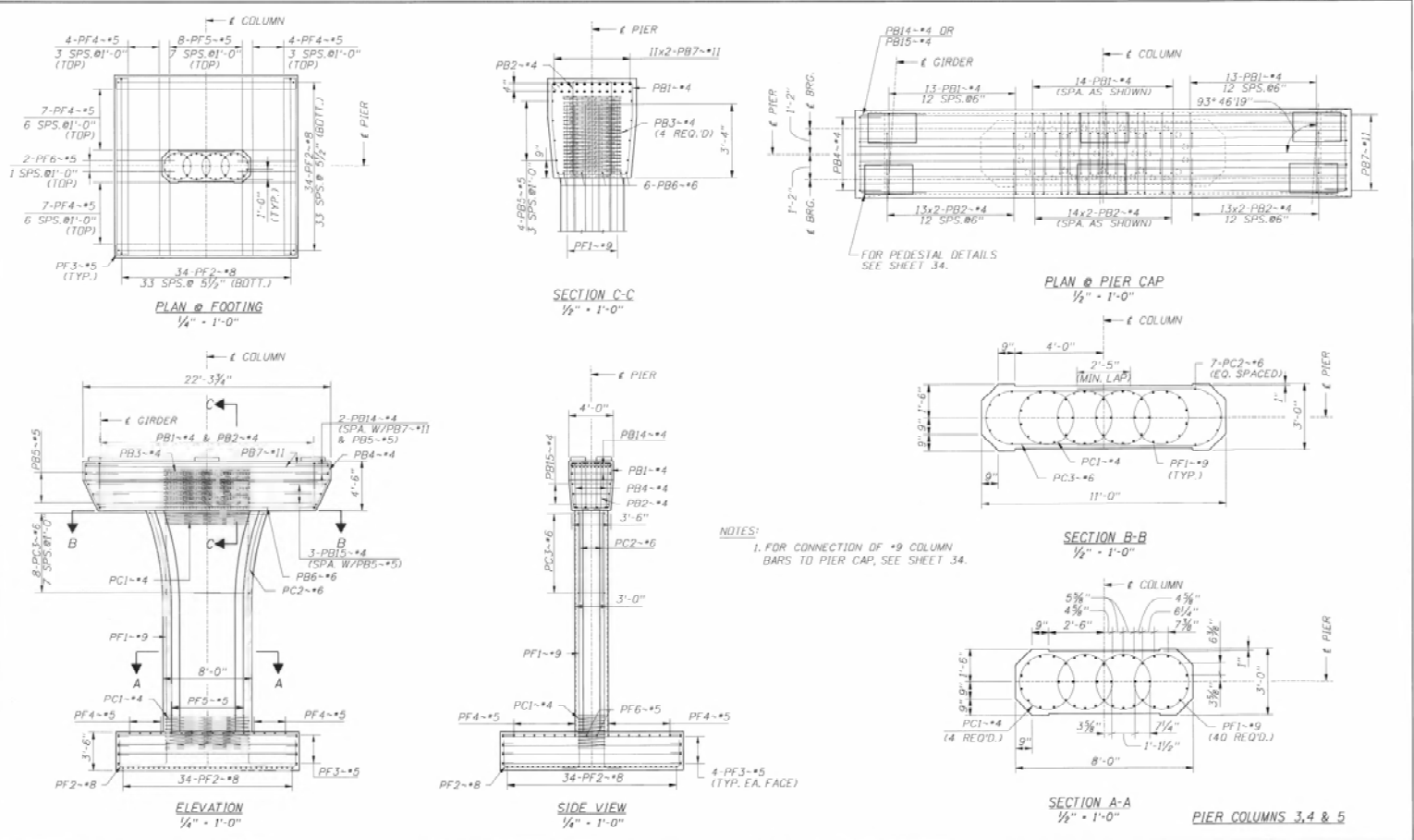
DESIGNED: A. COLLINS DESK CHECKED: W. NICKAS DETAIL: J. SMITH SWE CHECKED: A. COLLINS CORRECTIONS:	SCALES SHOWN ARE FOR 34" X 22" PRINTS ONLY CADD FILE NO. DRAWN BY: ABE/ape DATE: APRIL 2008		IDAHO TRANSPORTATION DEPARTMENT Corven Engineering, Inc.	English PROJECT NO. A009(B1B)	ABUTMENT SECTION AND DETAILS (2 OF 2) 182'-0" PRESTRESSED CONCRETE BRIDGE VISTA AVE. OVER I-84 STA. 18+10.92	COUNTY: ADA KEY NO.: 09018 BRIDGE DRAWING NO.: 1615 SHEET: 21 OF 120
--	--	--	--	---	--	---



- NOTES:
1. COLUMNS 2, 3 AND 4 SHALL USE PRECAST PIER CAPS. PIER CAPS AT COLUMNS 1, 5 AND 6 MAY BE CAST-IN-PLACE OR PRECAST.
 2. FOR PIER ELEVATIONS AND DIMENSIONS, SEE SHEET 54.
 3. FOR PRECAST PIER CAP CONNECTION DETAILS, SEE SHEET 34.
 4. PRECAST PIER CAP SHOWN. REMOVE 1/2" MORTAR JOINT AND ADJUST ELEV. 'B' FOR C.I.P. OPTION.
 5. FOR AESTHETIC TREATMENT, SEE SHEET 70.

NO. DATE BY	REVISIONS	DESIGN	SCALES SHOWN		English PROJECT NO. A009(818)	PIER PLAN AND ELEVATION 182'-0" PRESTRESSED CONCRETE BRIDGE VISTA AVE. OVER I-84 STA. 18+10.92	BRIDGE INSPECTION MASTER KEY	
		G. TINDALE	ARE FOR 34" x 22"				COUNTY	KEY NO.
		W. NICKAS	PRINTS ONLY				ADA	09818
		A. SHOEMAKER					BRIDGE DRAWING NO.	SHEET
		A. COLLINS	CADD FILE NO.	1615	31 of 120			
			DRAWING DATE:	APRIL 2008				

IDAHO
 TRANSPORTATION
 DEPARTMENT
Corven Engineering, Inc.



NOTES:
 1. FOR CONNECTION OF #9 COLUMN BARS TO PIER CAP, SEE SHEET 34.

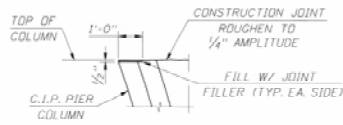
REVISIONS			DESIGNED	SCALE	PROJECT	BRIDGE PLANS	
NO.	DATE	BY	DESCRIPTION	DESIGNED	PROJECT NO.	BRIDGE INSPECTION MASTER KEY	
1				G. TINDALE	009(B1B)	COUNTY	KEY NO.
2				W. WICKAS		ADA	09818
3				J. SMITH		BRIDGE DRAWING NO.	SHEET
4				A. COLLINS		15115	33 OF 120
5							

IDAHO TRANSPORTATION DEPARTMENT
 Corven Engineering, Inc.

English
 PROJECT NO.
 009(B1B)

PIER DETAILS (2 OF 3)
 182'-0" PRESTRESSED CONCRETE BRIDGE
 VISTA AVE. OVER I-84
 STA. 18+10.92

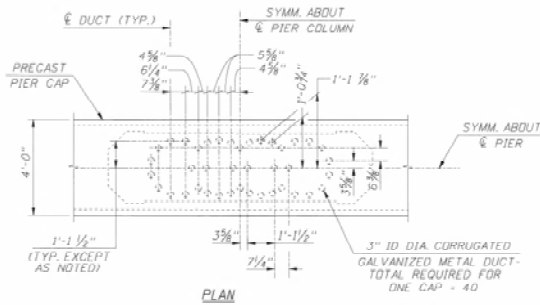
BRIDGE INSPECTION MASTER KEY
 COUNTY: ADA
 KEY NO.: 09818
 BRIDGE DRAWING NO.: 15115
 SHEET: 33 OF 120



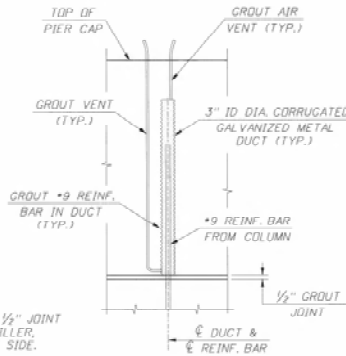
PIER DETAIL FOR C.I.P. PIER CAPS

1/2" x 1'-0"

PIER COLUMN DATA										
PIER COLUMN	ELEV. 'A'	ELEV. 'B'	ELEV. 'C'	ELEV. 'D'	ELEV. 'E'	ELEV. 'F'	ELEV. 'G'	ELEV. 'H'	ELEV. 'J'	ELEV. 'K'
1	2840.38	2827.48	2840.72	2840.91	2841.10	2841.29	2840.71	2840.90	2841.10	2841.29
2	2841.15	2828.25	2841.48	2841.67	2841.87	2842.06	2841.48	2841.67	2841.86	2842.05
3	2841.91	2829.02	2842.25	2842.44	2842.63	2842.74	2842.44	2842.63	---	---
4	2841.72	2828.82	2842.45	2842.26	2842.07	2842.44	2842.25	2842.06	---	---
5	2841.15	2828.25	2841.88	2841.68	2841.49	2841.87	2841.67	2841.48	---	---
6	2840.38	2827.49	2841.30	2841.11	2840.92	2840.73	2841.29	2841.10	2840.91	2840.72

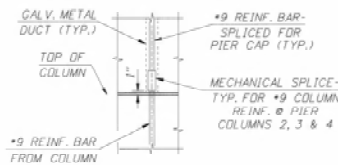


PLAN



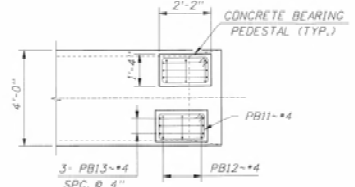
DETAIL 'A'

1'-1" x 1'-0"

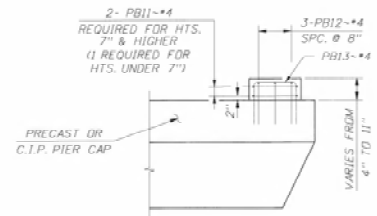


DETAIL 'B'

1'-1" x 1'-0"

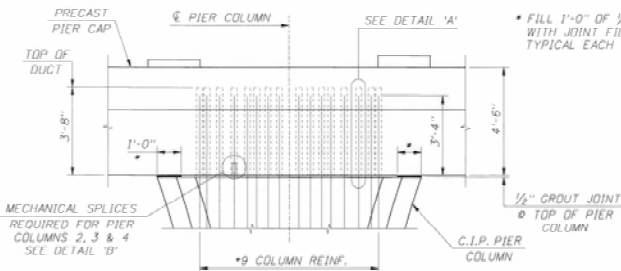


TYPICAL EACH PEDESTAL



CONCRETE BEARING PEDESTAL DETAILS FOR PIER CAPS

1/2" x 1'-0"



ELEVATION

PRECAST PIER CAP CONNECTION DETAILS

1/2" x 1'-0"

* FILL 1'-0" OF 1/2" JOINT WITH JOINT FILLER, TYPICAL EACH SIDE.

NO.	DATE	BY	REVISIONS DESCRIPTION
1			
2			
3			
4			

DESIGNED BY: G. TINDALE
 CHECKED BY: W. NICKAS
 DRAWN BY: A. SHUMAKER
 CHECKED BY: A. COLLINS
 CORRECTIONS: _____

SCALES SHOWN ARE FOR 3/4" x 22" PRINTS ONLY
 CADD FILE NO. *PIER CAP*
 DATE: APRIL 2008

IDAHO TRANSPORTATION DEPARTMENT
Corven Engineering, Inc.

English
 PROJECT NO. A009(B18)

PIER DETAILS (3 OF 3)
 182'-0" PRESTRESSED CONCRETE BRIDGE
 VISTA AVE. OVER I-84
 STA. 18+10.92

BRIDGE PLANS	
BRIDGE INSPECTION MASTER KEY	
COUNTY: ADA	KEY NO.: 090818
BRIDGE DRAWING NO.: 16115	SHEET: 34 OF 120