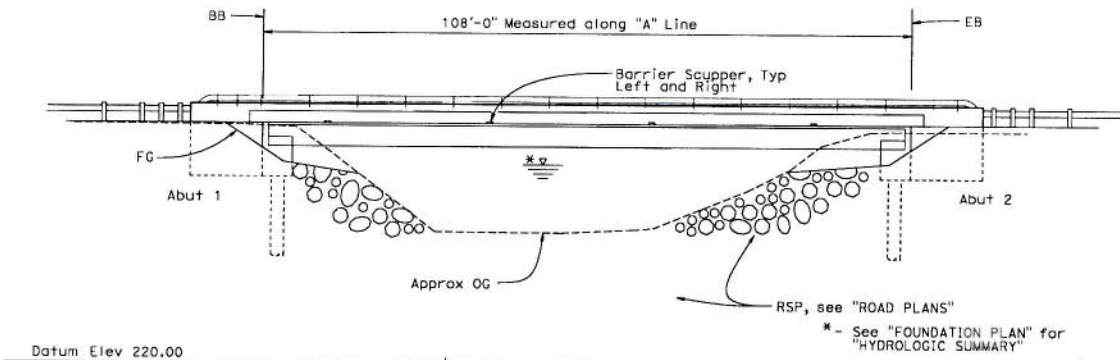
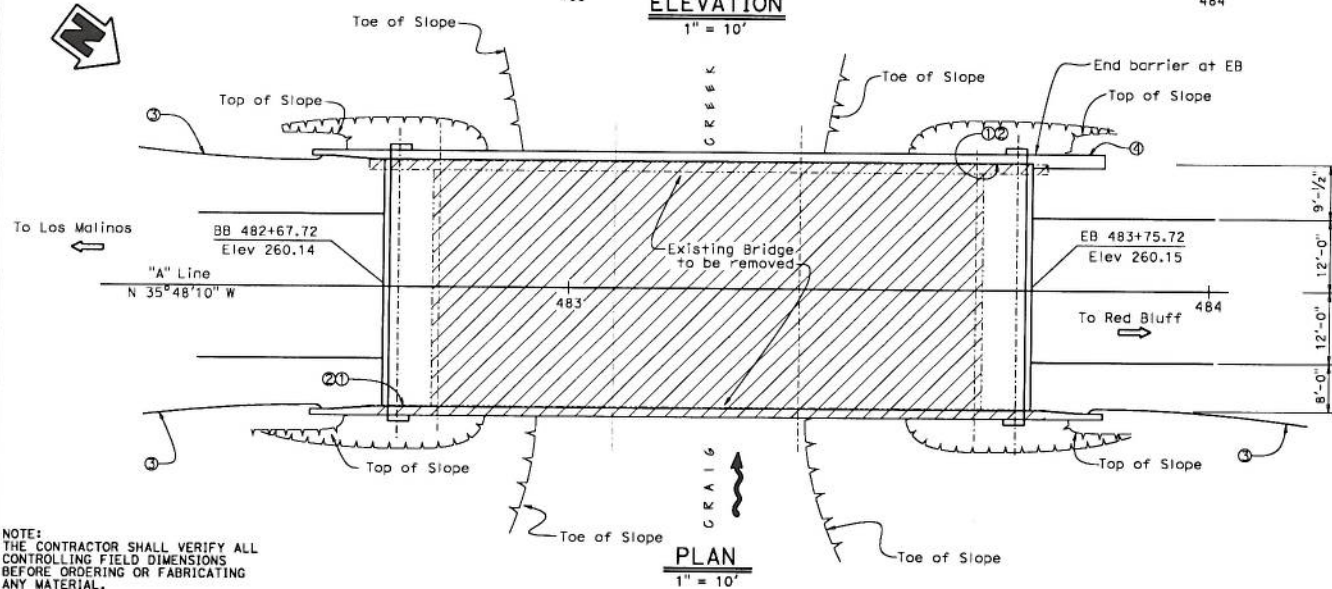


PROFILE GRADE
No Scale



ELEVATION
1" = 10'



NOTE:
THE CONTRACTOR SHALL VERIFY ALL CONTROLLING FIELD DIMENSIONS BEFORE ORDERING OR FABRICATING ANY MATERIAL.

PLAN
1" = 10'

DIST	COUNTY	ROUTE	POST MILES TOTAL PROJECT	SHEET No	TOTAL SHEETS
02	Teh	99	15.4/15.7 20.9/21.3	48	67

Randip S Bains 8/27/09
REGISTERED CIVIL ENGINEER DATE

PLANS APPROVAL DATE

12-14-09

PLANS APPROVAL DATE

REGISTERED PROFESSIONAL ENGINEER
Randip S Bains
No. 4112
Exp. 6-30-11
CIVIL
STATE OF CALIFORNIA

The State of California or its officers or agents shall not be responsible for the accuracy or completeness of electronic copies of this plan sheet.

NOTES:

- Indicates Existing Bridge Removal "Br No. 08-0014"
- Indicates Existing Structure
- Indicates New Structure

- ① Point "CRAIG CREEK"
- ② Point "BRIDGE NO. 08-0168"
- ③ MBGR, see "ROAD PLANS"
- ④ Crash Cushion, see "ROAD PLANS" Place over precast wingwall

Scuppers required in Left and Right Barrier Rails at Stations 482+80, 483+07, 483+34, 483+61

For "GENERAL NOTES", "PILE DATA TABLE", and "INDEX TO PLANS" see "INDEX TO PLANS" sheet

For "TYPICAL SECTION" see "GENERAL PLAN NO. 2" sheet

QUANTITIES		
TEMPORARY SUPPORT	LUMP SUM	
BRIDGE REMOVAL	LUMP SUM	
STRUCTURE EXCAVATION (BRIDGE)	590	CY
STRUCTURE BACKFILL (BRIDGE)	106	CY
FURNISH 24" CAST-IN-STEEL SHELL	785	LF
CONCRETE PILING		
DRIVE 24" CAST-IN-STEEL SHELL CONCRETE PILE	12	EA
STRUCTURAL CONCRETE, BRIDGE BEAM (100'-110')	150	CY
FURNISH PRECAST PRESTRESSED CONCRETE BOX	11	EA
FURNISH PRECAST ABUTMENT	4	EA
FURNISH PRECAST WINGWALL	4	EA
ERECT PRECAST PRESTRESSED CONCRETE BOX BEAM	11	EA
ERECT PRECAST ABUTMENT	4	EA
ERECT PRECAST WINGWALL	4	EA
JOINT SEAL (MR 113)	85	LF
BAR REINFORCING STEEL (BRIDGE)	36,800	LB
TUBULAR BICYCLE RAILING	264	LF
CONCRETE BARRIER (TYPE 736)	264	LF

Joseph E. Downing DESIGN ENGINEER	DESIGN BY	Randip S Bains	CHECKED	JOSE M Aquino III	LOAD & RESISTANCE FACTOR DESIGN	LIVE LOADS	HL93 W/LOW-BODY PERMIT DESIGN VEHICLE	STATE OF CALIFORNIA DEPARTMENT OF TRANSPORTATION	DIVISION OF ENGINEERING SERVICES STRUCTURE DESIGN DESIGN BRANCH 3	BRIDGE NO.	08-0168	CRAIG CREEK BRIDGE (REPLACE) GENERAL PLAN NO. 1
	DETAILS BY	Joy Reid	CHECKED	JOSE M Aquino III	LAYOUT BY	Randip S Bains	CHECKED			JOSE M Aquino III	POST MILE	
	QUANTITIES BY	Art Herrera	CHECKED	Wike Bergman	SPECIFICATIONS BY	Dave Klein	PLANS AND SPEC	Dave Klein	CU 03264 EA 2C1101	DISTRICT PRINTS BEARING EARLIER REVISION DATES	REVISION DATES	SHEET 1 OF 20

STRUCTURE DESIGN GENERAL PLAN SHEET (ENGLISH) (REV. 07-24-06)

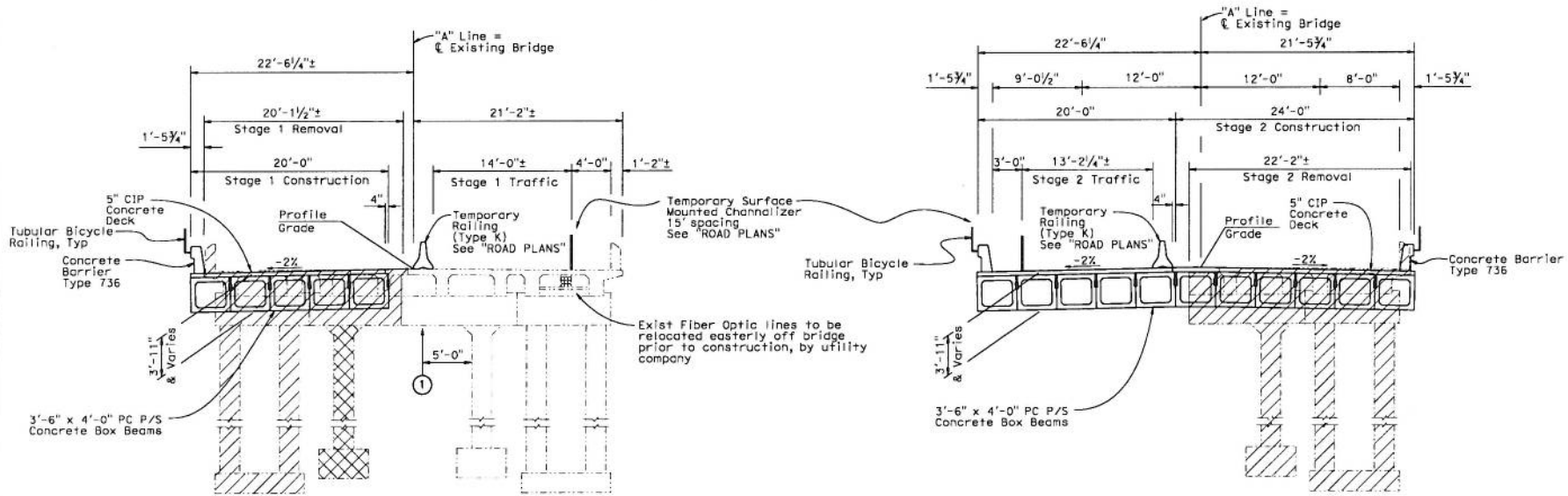
FILE: 08-0168-a-gp01.dgn

DATE PLOTTED: 03-08-2008 11:41 AM

POST AWARD CHANGE TO SINGLE STAGE CONSTRUCTION WITH USE OF MASEY BRIDGE ON SHOO-FLY TRAFFIC DIVERSION.

DIST	COUNTY	ROUTE	POST MILES	TOTAL PROJECT	SHEET NO	TOTAL SHEETS
02	Teh	99	15.47/15.7	20.9/21.3	49	67

Randip S Bains 8/27/09
 REGISTERED CIVIL ENGINEER DATE
 PLANS APPROVAL DATE 12-14-09
 No. 4412
 Exp. 8-30-11
 CIVIL
 STATE OF CALIFORNIA



STAGE 1

STAGE 2

TYPICAL SECTION
3/8" = 1'-0"

NOTE:
THE CONTRACTOR SHALL VERIFY ALL CONTROLLING FIELD DIMENSIONS BEFORE ORDERING OR FABRICATING ANY MATERIAL.

NOTES:
For details not shown see "GENERAL PLAN NO. 1" sheet

- ① Temporary Support Reaction for Stage 1 Construction
DL=40 kip (unfactored)
LL=45 kip (unfactored)
- Indicates Existing Bridge Removal
- Indicates existing column may be utilized for Temporary Support system
- Indicates Existing Structure
- Indicates New Structure

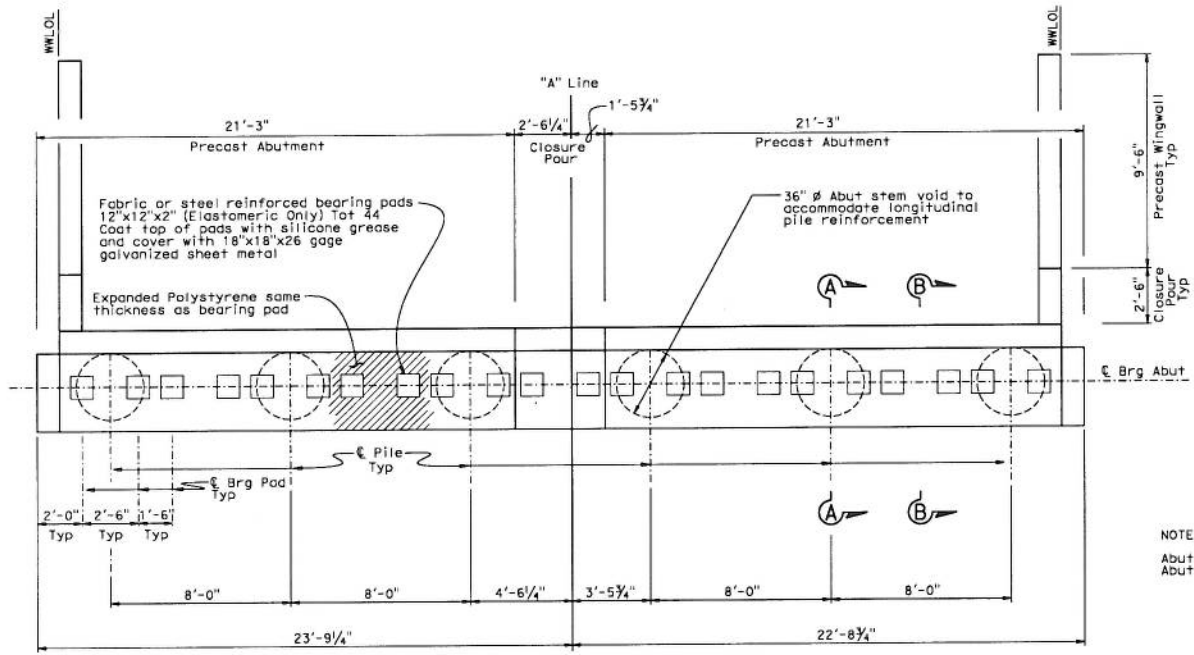
STATE OF CALIFORNIA DEPARTMENT OF TRANSPORTATION		DIVISION OF ENGINEERING SERVICES STRUCTURE DESIGN BRIDGE NO. 08-0168 POST MILE 21.13 CRAIG CREEK BRIDGE (REPLACE) GENERAL PLAN NO. 2	
DESIGN BY <i>Randip S Bains</i>	CHECKED BY <i>Jose W Aquino III</i>	LOAD & RESISTANCE FACTOR DESIGN BY <i>Jose W Aquino III</i>	LIVE LOADINGS HL 93 W/ "LOW-BOY'S" PERMIT DESIGN VEHICLE CHECKED BY <i>Jose W Aquino III</i>
DETAILS BY <i>Jay Reid</i>	CHECKED BY <i>Jose W Aquino III</i>	LAYOUT BY <i>Randip S Bains</i>	DESIGNED SPEED CHECKED BY <i>Dave Klein</i>
QUANTITIES BY <i>Art Herrera</i>	CHECKED BY <i>Mike Bergman</i>	SPECIFICATIONS BY <i>Dave Klein</i>	
DESIGN ENGINEER <i>Joseph E Downing</i>		ORIGINAL SCALE IN INCHES FOR REDUCED PLANS 0 1 2 3	
STRUCTURES DESIGN GENERAL PLAN SHEET (ENGLISH) (REV. 07-24-06)		DISCREPANCY PRINT BEARING NO. EA 2C1101 EARLIER REVISION DATES:	

USERNAME: p37 FROM: 08-0168-01-002.dgn DATE PLOTTED: 03-27-2009 TIME PLOTTED: 03:08:05

DIST	COUNTY	ROUTE	POST MILES	SHEET	TOTAL
02	Teh	99	TOTAL PROJECT 15.4/15.7 20.9/21.3	No. 53	SHEETS 67

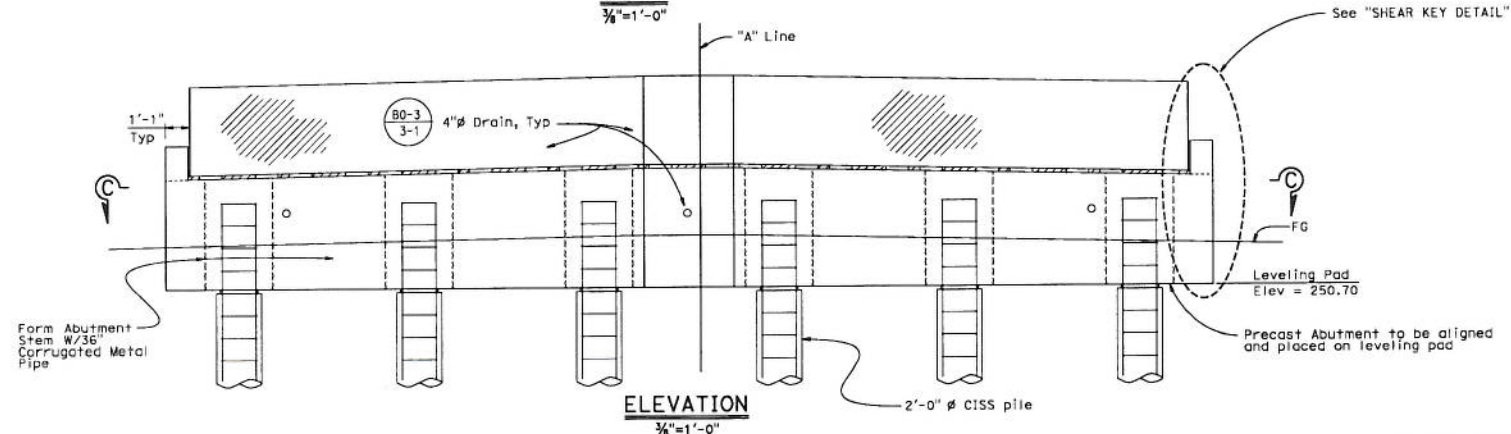
Randip S. Bains 8/27/09
 REGISTERED CIVIL ENGINEER DATE
 PLANS APPROVAL DATE 12-14-09
 The State of California or its officers or agents shall not be responsible for the accuracy or completeness of electronic copies of this plan sheet.

REGISTERED PROFESSIONAL ENGINEER
Randip S. Bains
 No. 64172
 Exp. 6-30-11
 CIVIL
 STATE OF CALIFORNIA



NOTE:
Abut 2 Shown
Abut 1 Similar

PLAN
3/8"=1'-0"



ELEVATION
3/8"=1'-0"

NOTES:
For "SECTION C-C", see "PRECAST ABUTMENT DETAILS NO. 1" sheet
For "SECTION A-A" and "SECTION B-B", see "PRECAST ABUTMENT DETAIL NO. 2" sheet
For "SHEAR KEY DETAIL", see "PRECAST ABUTMENT DETAIL NO. 3" sheet

STRUCTURES DESIGN DETAIL SHEET (ENR.FTH) (REV. 10/26/09)	DESIGN	BY Randip S. Bains	CHECKED Jose M. Aquino III	STATE OF CALIFORNIA DEPARTMENT OF TRANSPORTATION	DIVISION OF ENGINEERING SERVICES STRUCTURE DESIGN DESIGN BRANCH 3	BRIDGE NO.	08-0168	CRAIG CREEK BRIDGE (REPLACE) PRECAST ABUTMENT LAYOUT
	DETAILS	BY Jay Reid	CHECKED Jose M. Aquino III			POST MILE	21.13	
	QUANTITIES	BY Art Herrera	CHECKED Mike Bergman	CU 03264 EA 2C1101	DISREGARD PRINTS BEARING EARLIER REVISION DATES	REVISION DATES	SHEET	6

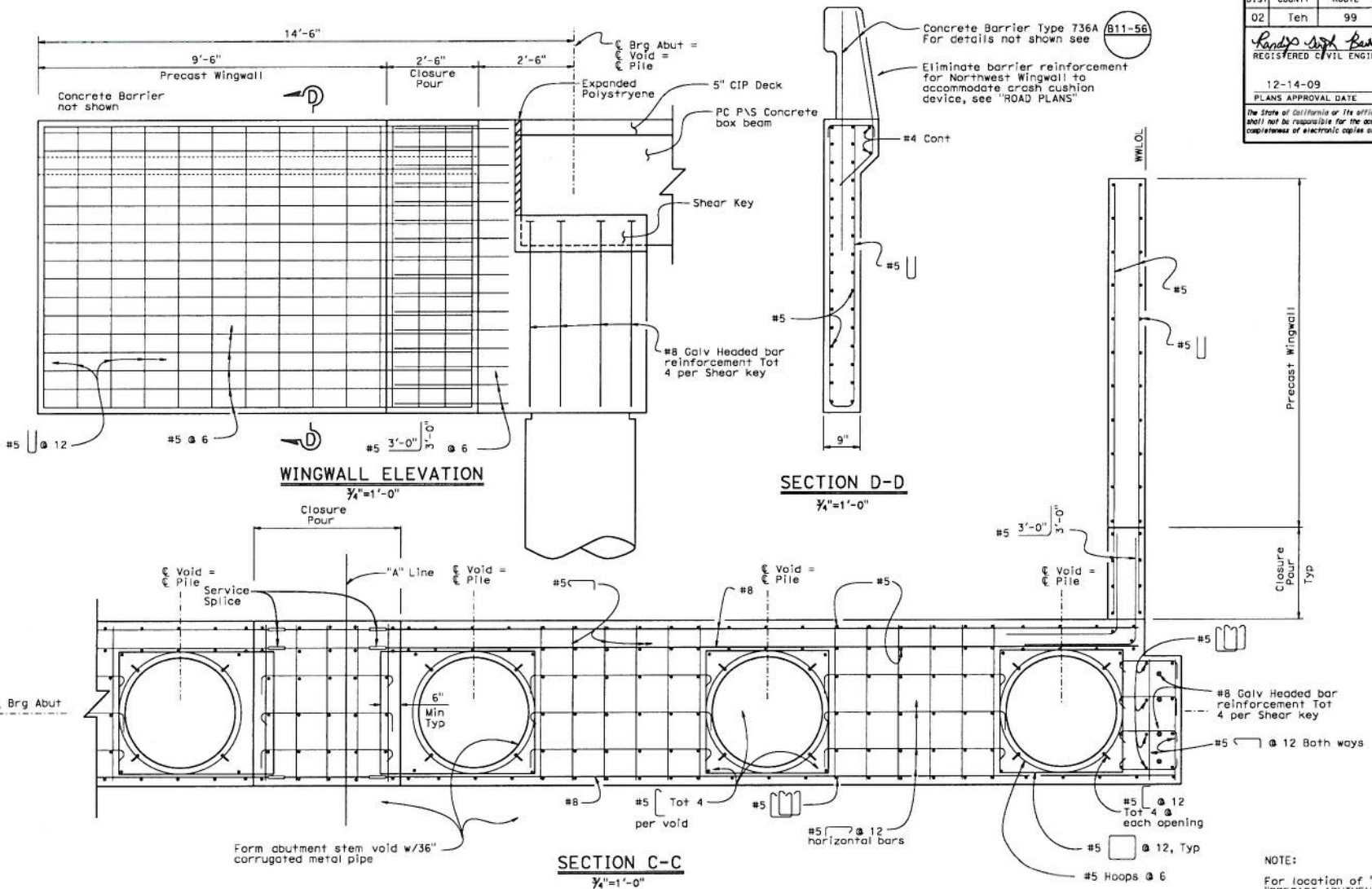
USERNAME: 03-TPT-INR1 DATE PLOTTED: 03/27/2009 TIME PLOTTED: 07:08:00

DIST	COUNTY	ROUTE	POST MILES TOTAL PROJECT	SHEET NO	TOTAL SHEETS
02	Teh	99	15.47157 20.9/21.3	54	67

Plans Approval
Randip S. Bains
REGISTERED CIVIL ENGINEER DATE 8/27/09
no. 6112
REG. NO. 8-38-11
CIVIL
STATE OF CALIFORNIA

12-14-09
PLANS APPROVAL DATE

The State of California or its officers or agents shall not be responsible for the accuracy or completeness of electronic copies of this plan sheet.



NOTE:
For location of "SECTION C-C", see "PRECAST ABUTMENT LAYOUT" sheet

STRUCTURE DESIGN DETAIL SHEET (ENGLISH) (REV. 10/23/03)

DESIGN	BY Randip S Bains	CHECKED	Jose M Aquino III
DETAILS	BY Jay Reid	CHECKED	Jose M Aquino III
QUANTITIES	BY Art Herrera	CHECKED	Mike Bergman

ORIGINAL SCALE: 1/8" = 1'-0"
FOR REDUCED PLANS

STATE OF CALIFORNIA
DEPARTMENT OF TRANSPORTATION

DIVISION OF ENGINEERING SERVICES
STRUCTURE DESIGN
DESIGN BRANCH **3**

BRIDGE NO.
08-0168
POST MILE
21.13

CRAIG CREEK BRIDGE (REPLACE)
PRECAST ABUTMENT DETAILS NO. 1

CU 03264
EA 2C1101

FILE -> 08-0168-f-abt101.dgn

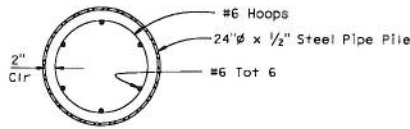
DISSEMINATE PRINTS BEARING EARLIER REVISION DATES

REVISION DATES

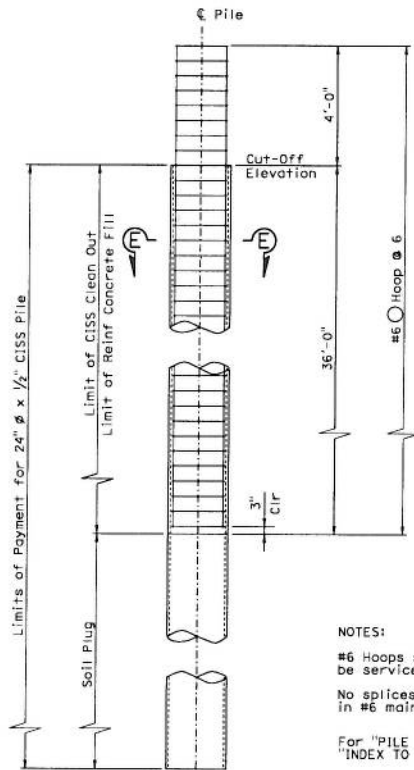
REVISION NO. 7 20

DIST	COUNTY	ROUTE	POST MILES TOTAL PROJECT	SHEET No	TOTAL SHEETS
02	Teh	99	15.4/15.7, 20.9/21.3	55	67

Randip S. Bains 8/27/09
 REGISTERED CIVIL ENGINEER DATE
 12-14-09
 PLANS APPROVAL DATE
 The State of California or its officers or agents shall not be responsible for the accuracy or completeness of electronic copies of this plan sheet.

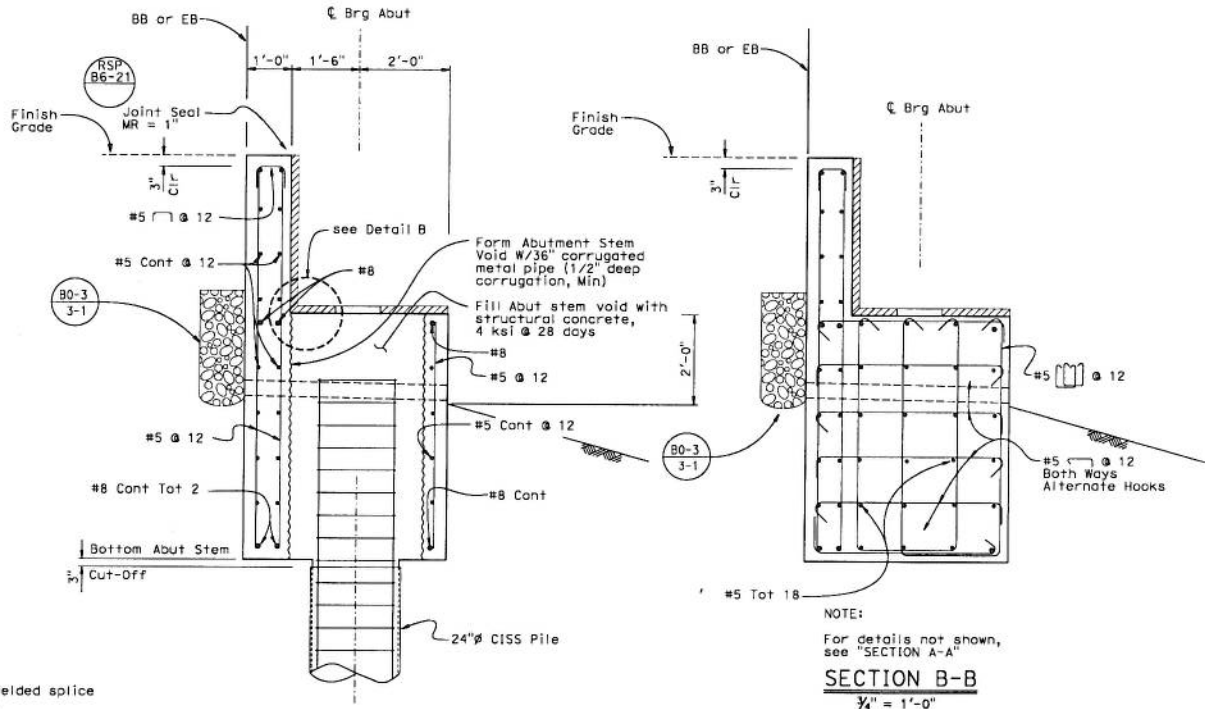


SECTION E-E
1" = 1'-0"



24" CISS PILE
1/2" = 1'-0"

NOTES:
 #6 Hoops shall be service butt-welded splice
 No splices allowed in #6 main reinforcement
 For "PILE DATA TABLE" see "INDEX TO PLANS" sheet



SECTION A-A
3/4" = 1'-0"

NOTE:
 For details not shown, see "SECTION A-A"
SECTION B-B
 3/4" = 1'-0"

NOTES:
 For location of "SECTION A-A" and "SECTION B-B" see "PRECAST ABUTMENT LAYOUT" sheet
 For "DETAIL B" see "PRECAST ABUTMENT DETAILS NO. 3" sheet

STRUCTURES DESIGN DETAIL SHEET (ENGLISH) (REV. 10/25/03)	DESIGN	BY: Randip S Bains	CHECKED: Jose M Aquino III	STATE OF CALIFORNIA DEPARTMENT OF TRANSPORTATION	DIVISION OF ENGINEERING SERVICES STRUCTURE DESIGN DESIGN BRANCH 3	BRIDGE NO.	08-0168	CRAIG CREEK BRIDGE (REPLACE)
	DETAILS	BY: Jay Reid	CHECKED: Jose M Aquino III			POST MILE	21.13	
	QUANTITIES	BY: Art Herrera	CHECKED: Mike Bergman	CU 03264 EA 2C1101	DISMEMBER PRINTS BEARING EARLIER REVISION DATES	BY: [Signature]	DATE: [Signature]	SHEET 8 OF 20

ORIGINAL SCALE IN INCHES FOR REPRODUCED PLANS

P.L.L. -> 08-0168-F-000102.dgn

USERNAME: 23771001 DATE PLOTTED: 23-DEC-2009 TIME PLOTTED: 08:05:00

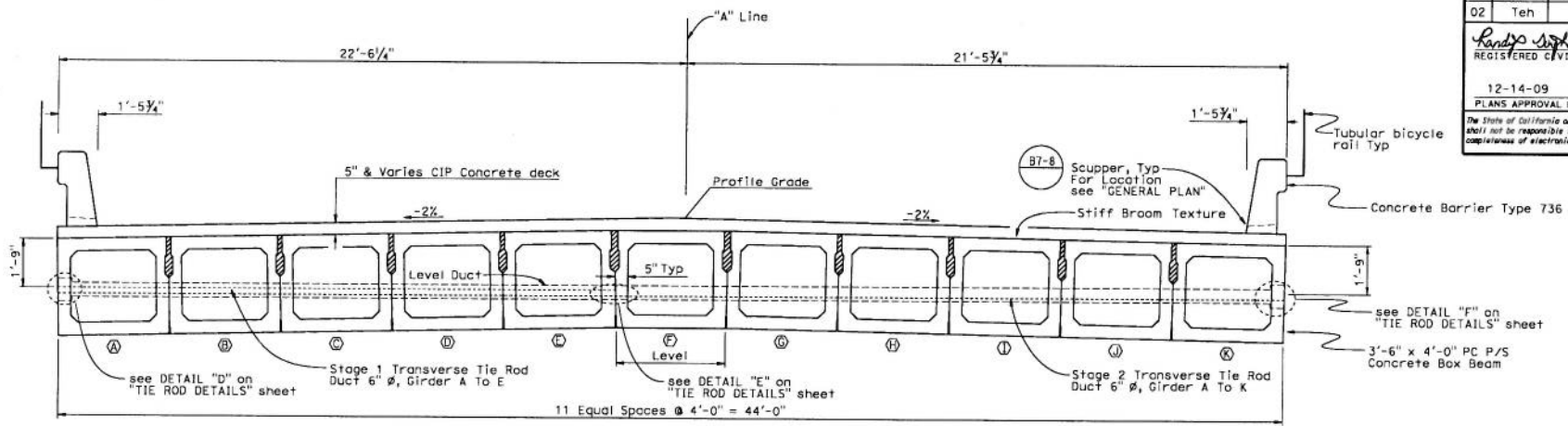
DIST	COUNTY	ROUTE	POST MILES TOTAL PROJECT	SHEET No	TOTAL SHEETS
02	Teh	99	15.4/15.7 20.9/21.3	57	67

Randy S. Bains 8/27/09
REGISTERED CIVIL ENGINEER DATE

12-14-09
PLANS APPROVAL DATE

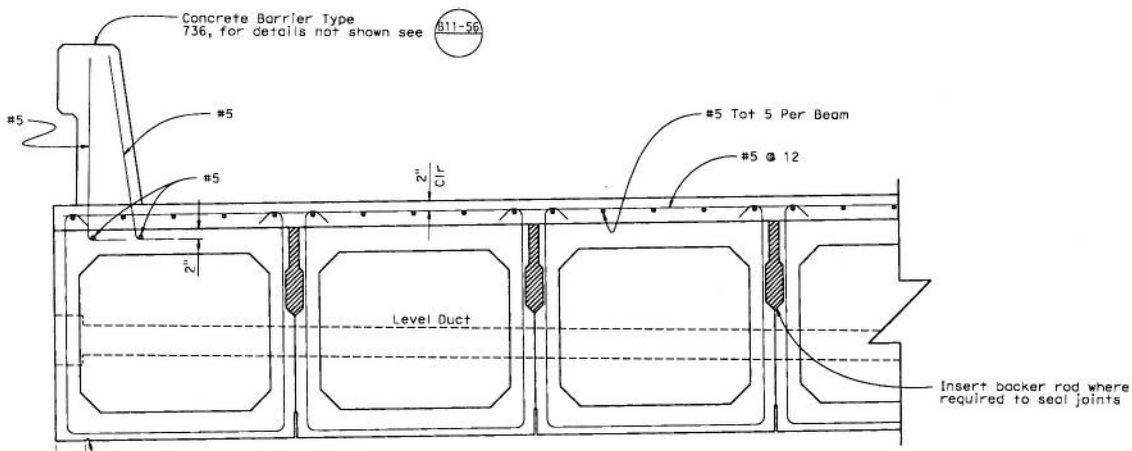
Randy S. Bains
No. 64172
Exp. 6-30-11
CIVIL
STATE OF CALIFORNIA

The State of California or its officers or agents shall not be responsible for the accuracy or completeness of electronic copies of this plan sheet.



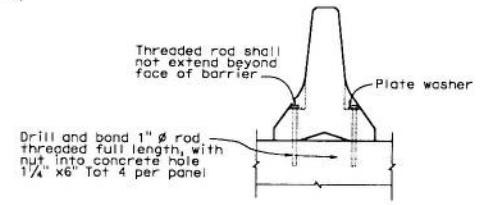
TYPICAL SECTION

1/2" = 1'-0"



PART TYPICAL SECTION

1" = 1'-0"



Note:
For Temporary Railing (Type K) location see 'Road Plans'

TYPE K RAILING ATTACHMENT

No Scale

NOTES:

- 1) All longitudinal keyways and diaphragm blockouts shall be sandblasted in the precasting plant to remove laitance and enhance bond
 - 2) Area around keyway and blockouts shall be kept moist for 24 hours prior to grouting between girders
- * Adjust mild steel spacing to avoid conflict with P/S STRANDS.
- Eliminate grout keyway at exterior face of exterior girders A&K.
- For P/C P/S Box Beam see "PRESTRESSED BOX BEAM DETAILS NO. 2"

Indicates Non-Shrink grout

DESIGN	BY	Randy S Bains	CHECKED	Jose M Aquino III	STATE OF CALIFORNIA DEPARTMENT OF TRANSPORTATION	DIVISION OF ENGINEERING SERVICES STRUCTURE DESIGN DESIGN BRANCH 3	BRIDGE NO.	08-0168	CRAIG CREEK BRIDGE (REPLACE) TYPICAL SECTION
	DETAILS	Jay Reid	CHECKED	Jose M Aquino III			POST MILE	21.13	
QUANTITIES	BY	Art Herrera	CHECKED	Mike Bergman	CU 03264 EA 2C1101	DISSEMINATE PRINTS BEARING EARLIER REVISION DATES	REVISION DATES	SHEET 10	TOTAL SHEETS 20

STRUCTURES DESIGN DETAIL SHEET (ENGLISH) (REV. 10/26/08)

ORIGINAL SCALE IN INCHES FOR REDUCED PLANS

1-11 --> 08-0168-K-18.dgn

USERNAME: p7r1m1k1 DATE PLOTTED: 03-23-2008 TIME PLOTTED: 07:08:07