

J.F. White Contracting Company

10 Burr Street
PO Box 9020
Framingham, MA 01701-9020

Phone: (617) 454-1658
Fax: (617) 558-0460

TRANSMITTAL

No. 00030

PROJECT: Cedar St Bridge / Rt 9 Wellesley

DATE: 2/14/2011

TO: MassDOT Highway Division
128 North Street
Boston, MA 02109

REF: Submittal 9.1 - 002 - B

ATTN: Brian Kelleher

WE ARE SENDING:	SUBMITTED FOR:	ACTION TAKEN:
<input checked="" type="checkbox"/> Shop Drawings	<input checked="" type="checkbox"/> Approval	<input type="checkbox"/> Approved as Submitted
<input type="checkbox"/> Letter	<input type="checkbox"/> Your Use	<input type="checkbox"/> Approved as Noted
<input type="checkbox"/> Prints	<input checked="" type="checkbox"/> As Requested	<input type="checkbox"/> Returned After Loan
<input type="checkbox"/> Change Order	<input type="checkbox"/> Review and Comment	<input type="checkbox"/> Resubmit
<input type="checkbox"/> Plans		<input type="checkbox"/> Submit
<input type="checkbox"/> Samples	SENT VIA:	<input type="checkbox"/> Returned
<input type="checkbox"/> Specifications	<input checked="" type="checkbox"/> Attached	<input type="checkbox"/> Returned for Corrections
<input checked="" type="checkbox"/> Other: Made from Submittal	<input type="checkbox"/> Separate Cover Via: Mail	<input type="checkbox"/> Due Date:

ITEM NO.	COPIES	DATE	ITEM	NUMBER	REV. NO.	DESCRIPTION	STATUS
1	4	2/11/2011	SUT	9.1-002	B	Title: PROJECT SCHEDULE REQUIEMENTS Desc: Initial Project Baseline Schedule Rev01	OPN
2	1	2/11/2011				Title: Project Schedule Requirements Desc: Initial Project Baseline Schedule Rev01 One (1) CD w/ Primeveria 3 Files 000B - Main Schedule H00B - 72 HR Detour Schedule	OPN

CC: JFW Job # 1023 File "Unapproved Submittals"

Signed:


Neil Connelly



J.F. WHITE CONTRACTING COMPANY

MassDOT Contract No. 65281
Bridge W-13-015 Replacement
Wellesley - Cedar Street over Rte 9
Design Build Project

SUBMITTAL No. 9.1 - 002 - B

Initial Project Baseline Schedule (Rev01)

J.F. White Contracting Company has reviewed for
compliance with contract documents and for
coordination with other trades.



Date 02/14/11

Contract No. MassDOT No. 65281	Paragraph 9.1.3
Specification Section (Spec-Seq-Rev) 9.1 - Project Schedule Submittals	

J.F. White Contracting Company



MassDOT Contract No. 65281

Bridge Replacement W-13-015

Wellesley – Cedar Street over Rte 9

Design Build Project

Baseline Schedule

Rev 1

Table of Contents

Section # 01 – Narrative

Section # 02 – Bar Chart Schedule

Section # 03 – Critical Path Plot

Section # 04 – Activity Report with Predecessors/Successors

Attachments – P3 File 000B – Main Schedule

P3 File H00B – Breakout 72 HR Detour Schedule

Section 1 – Narrative

***J.F. White Contracting Company
Design/Build Procurement
Cedar Street over Route 9- Wellesley, MA
Massachusetts Department of Transportation Project No. 65281***

The following is the Revised Rev. 0 base line schedule for the Cedar Street over Route 9- Wellesley MA. The Rev. 0 baseline schedule was submitted on 12/06/10 and was sent back with a status “revise & resubmit”. The following changes have been incorporated in the revised baseline attached:

- 1- The following activity codes have been added to both revised baseline schedules (000B & H00B), to allow for various sorting of the schedule activities.

RESP Responsibility code

BENZ	The Benzing Co.
CARRD	Carr-Dee Corp
CIP	CIP Concrete Supplier TBD
DOW	The Dow Company
DSBRN	DS Brown
JFW	J. F. White
JFWDB	White-Gill-Finley-Rizzo Design Build Team
LAND	Landscaping Sub TBD
MARK	Pavement Marking Sub TBD
MCCOY	McCoy Anderson Fence
MDOT	MassDOT
PAVE	Paving Sub TBD
R/W	Regis, JFW
REGIS	Regis Steel Corp.
RIGG	Rigging International
SAUGU	Saugus Construction
TESTA	Testa
TRAFF	Traffic Signal Sub TBD
WILL	William E. Dailey Precast, LLC
WTRP	Waterproofing Sub TBD

PHAS Phase code

PHAS 1	General Requirements
PHAS 2	Contract Design
PHAS 3	Primary Submittals
PHAS 4	Procurement
PHAS 5	Mobilize/Laydown/Assembly
PHAS 6	Pre-Closure Civil Work
PHAS 7	Weekend Closure
PHAS 8	Finishes

LOCN Location code

AREA 1	Temp Bridge Location
AREA 2	Cedar/Worcester St
AREA 3	Rt. 9
AREA 4	Permanent Bridge Location @ Cedar St.

- 2- Early start restraint of Jun 20, 2011 for Activity N1000 'Exc/Rem Extg Sidewalks/Curb/G Rail Cedar/Worc St' has been removed. Milestone #1 has been added as a predecessor to activity N1000.
- 3- Activity P201 has been deleted from the schedule.
- 4- Submittal review activity descriptions have been revised to distinguish between MassDOT review & JFWDB review activities. A responsibility code has also been added to all review activities.
- 5- Permitting process has been detailed and sorted out as a separate phase for clarification
- 6- Appropriate cost account items have been assigned to schedule activities in both revised baseline schedules 000B & H00B.
- 7- Waterproofing activities have been added to the revised baseline schedule 000B.

1. Narrative

Scope and Summary of Work

The work under this Project consists of designing and building the Cedar Street bridge over Route 9 in Wellesley, Massachusetts. The work involved in the Project consists of saw cutting and demolishing the upper portions of the existing abutments and center pier, demolition of the existing Cedar Street superstructure, installation of precast abutment/pier cap beams, installation of a new superstructure, construction of retaining/wing walls, sidewalks, new traffic signalization, guardrail, roadway approaches, new pavement and striping.

In the Design Phase, the 25% Design of the Bridge is scheduled to be submitted to MassDOT for review on October 27, 2010 and the 25% Design of the Highway is scheduled for November 10, 2010. The early release of the structural steel is planned for November 4, 2010, since the procurement, shop drawing approval and fabrication is critical to meeting the Contract Milestones. Once the MasDOT has reviewed the 25% design for the Bridge, the 100% design of the Bridge will commence and be submitted to MassDOT on December 23, 2010. At that time, the elastomeric bearings shop drawings will be started since they are a long lead item. Concurrently, after the MassDOT 25% Design review of the Highway, the 100% Design of the Highway will be advanced and submitted on January 13, 2011. During the 100% Design review of the Bridge and Highway, the permitting process will be undertaken.

The Construction Phase commences with the mobilization of the site office trailers, installing environmental controls, clearing and grubbing of the area where the bridge structure will be constructed and stockpiling of soil material.

Between June 20, 2011 and prior to the July, 1, 2011 Cedar Street closure, Worcester Street will be brought down to its binder grade, new wing walls will be constructed at the four corners of the bridge, the existing median under the bridge on Route 9 will be removed and replaced with temporary median barriers, the Route 9 roadway will be temporarily widened, the existing loop detectors will be disconnected and temporarily replaced with microwave detectors to operate the traffic signal system, and the installation of the permanent traffic signal signalization conduit, hand holes, and foundations will be installed.

The bridge structure will be built on shoring that includes the structural steel, reinforced concrete deck and concrete barrier walls, commencing months prior to the installation. Once constructed, a Self Propelled Modular Transporters (SPMT) will move and place the bridge superstructure in its final position. This placement of the superstructure is scheduled from 10:00 pm on Friday July 1, 2011 through 10:00 pm on July 4, 2011. The work will be continuous during that period that includes closing the Cedar Street bridge, demolition of the existing superstructure, saw cutting of the abutment and center pier upper sections, installing/grouting precast cap beams at the abutments and center pier, installing the new bridge bearings, installing the new bridge superstructure, membrane waterproofing and a HMA surface. After this period, the bridge will be available for traffic.

From the opening of the new Cedar Street Bridge until July 20, 2011, the work to complete the Project will consist of curbing, sidewalk construction, implementation of the new traffic signalization mast arms, signal poles and devices, final paving, striping and landscaping.

2. Critical Paths

The critical path for Milestone 1 commences with the Proposal due date of July 21, 2010 which is followed by the Notice-of-Award Selection, Preparation of the 25% Design Submittal of the Bridge Plans & Specifications and Notice-to-proceed. After NTP, the critical path continues with the MassDOT review of the 25% Design Submittal of the Bridge Plans & Specifications and concurrently with the MassDOT Review of the Quality Systems Manual. The critical path then proceeds through the submittal of the structural steel shop drawings and review/approval of the shop drawings, followed by the fabrication /delivery of the structural steel. This leads into the erection of the structural steel, bridge deck placement, sidewalk and barriers.

The critical path leading to Milestone 2 begins with the constrained date of June 20, 2011 on the civil work that proceeds the July 1, 2011 closure. The critical path work begins with the removal of the existing sidewalks, curb, and guard rail at Cedar and Worcester Streets. This is then followed by the backfilling and re-grading, resetting of the curb and constructing concrete sidewalks at Cedar and Worcester Streets. Then on July 1, 2011, the

detour begins and the work to demolish and construct the new partial substructure and complete superstructure governs the critical path to Milestone 2.

The critical path leading to Milestones 3 and 4 begins with the same constrained date of June 20, 2011 on the civil work that proceeds the July 1, 2011 closure. The critical path work begins with the removal of the existing sidewalks, curb, and guard rail at Cedar and Worcester Streets. This is then followed by the shoring of utility poles, excavation and constructing the barriers and end posts. The critical path to Milestone 3 then proceeds through the construction of the pilasters and finishes up with the fine grading, loam and landscaping. The critical path from Milestone 3 to Milestone 4 consists of the punchlist/as-built and Project closeout. The critical path plots are included with this submittal.

3. Schedules

In this revised baseline schedule submittal, we have included two schedules. One schedule is the revised main schedule which is based upon a time unit of days (P3 file 000B). The other schedule is the revised hourly sub-schedule (p3 file H00B) or breakout of the detour/closure work for demolishing and constructing the bridge which commences on July 1, 2011 at 10 pm and concludes on July 4, 2011 at 10 pm.

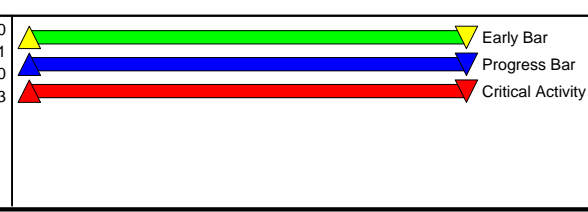
4. Calendars

There are 3 calendars utilized and designated in the schedule for this Project. The standard 5-day per week 8 hours per day calendar is designated as calendar 1 which includes the Holidays (Columbus Day, Veterans Day, Thanksgiving Day, the day before Christmas Day, the day before New Years Day, Presidents Day and Memorial Day. A 7 day per week calendar which is designated as calendar 2 which is used for milestones, cure time and submittal review periods. The third calendar (calendar 3) is utilized for work during the detour/shutdown of the roadway to demolish and install the new bridge. This calendar is for a 7 days per week, 24 hours per day work period to be primarily used over the period from July 1, 2011 through July 4, 2011 in the main schedule. In the hourly schedule a 24 hour per day calendar is utilized for the period of July 1, 2011 through July 4, 2011.

Section 2 – Bar Chart Schedule

Activity ID	Activity Description	Cal ID	PHAS	Cost Account	RESP	LOCN	Orig Dur	Early Start	Early Finish	Late Start	Late Finish	Total Float	2010					2011									
													JUL	AUG	SEP	OCT	NOV	DEC	JAN	FEB	MAR	APR	MAY	JUN	JUL	AUG	SEP
General Requirements																											
G100	Proposal Due (July 21, 2010)	1	PHAS 1				1	21JUL10	21JUL10	22JUL10	22JUL10	1	⚠ Proposal Due (July 21, 2010)														
G102	Contract Award/Selection	1	PHAS 1				31	22JUL10	02SEP10	23JUL10	03SEP10	1	▶ Contract Award/Selection														
G104	Notice to Proceed	1	PHAS 1				0	04OCT10		07OCT10		3	◆ Notice to Proceed														
M9000	Incentive Milestone #1 (June 20, 2011)	1	PHAS 1				0		20JUN11		20JUN11*	0	◆ Incentive Milestone #1 (June 20, 2011)														
N2050	Incentive Milestone #2 (July 4, 2011)	2	PHAS 1				0	04JUL11		04JUL11*		0	◆ Incentive Milestone #2 (July 4, 2011)														
N3002	Incentive Milestone #3 (July 20, 2011)	2	PHAS 1				0	20JUL11		20JUL11*		0	◆ Incentive Milestone #3 (July 20, 2011)														
N4001	Incentive Milestone #4 (August 20, 2011)	2	PHAS 1				0	19AUG11		20AUG11*		1	◆ Incentive Milestone #4 (August 20, 2011)														
Contract Design																											
D100	Submit: 25% Design P&S (Bridge)	1	PHAS 2			JFWDB	38	03SEP10	27OCT10	06SEP10	28OCT10	1	▶ Submit: 25% Design P&S (Bridge)														
D101	Submit: 25% Design P&S (Highway)	1	PHAS 2			JFWDB	38	17SEP10	10NOV10	20SEP10	12NOV10	1	▶ Submit: 25% Design P&S (Highway)														
D102	MassDOT Review: 25% Design P&S (Bridge)	2	PHAS 2			MDOT	30	28OCT10	26NOV10	30OCT10	28NOV10	2	▶ MassDOT Review: 25% Design P&S (Bridge)														
D200	Field Survey	1	PHAS 2			JFW	10	02NOV10	16NOV10	10DEC10	23DEC10	26	▶ Field Survey														
D105	MassDOT Review: 25% Design P&S (Highway)	2	PHAS 2			MDOT	30	11NOV10	10DEC10	14NOV10	13DEC10	3	▶ MassDOT Review: 25% Design P&S (Highway)														
D202	Soil Borings @ Temp Bridge Frame	1	PHAS 2	995.060		CARRD	1	15NOV10	15NOV10	22DEC10	22DEC10	26	⚠ Soil Borings @ Temp Bridge Frame														
D203	Soil Borings @ Traffic Signals	1	PHAS 2	874.800		CARRD	2	16NOV10	17NOV10	29DEC10	30DEC10	29	⚠ Soil Borings @ Traffic Signals														
D108	Submit: 100% Design PS&E (Bridge)	1	PHAS 2			JFWDB	22	29NOV10	29DEC10	29NOV10	29DEC10	0	▶ Submit: 100% Design PS&E (Bridge)														
D205	Submit: Geotechnical Report	1	PHAS 2	874.800, 995.060		JFWDB	15	29NOV10	17DEC10	23DEC10	14JAN11	18	▶ Submit: Geotechnical Report														
D222	Develop Project Web Site	1	PHAS 2	149.200		JFW	20	29NOV10	27DEC10	16DEC10	14JAN11	13	▶ Develop Project Web Site														
D109	Submit: 100% Design PS&E (Highway)	1	PHAS 2			JFWDB	22	13DEC10	13JAN11	14DEC10	14JAN11	1	▶ Submit: 100% Design PS&E (Highway)														
D206	Public Meeting	1	PHAS 2				1	16DEC10	16DEC10	14FEB11	14FEB11	40	⚠ Public Meeting														
D207	MassDOT Review: Geotechnical Report	2	PHAS 2			MDOT	30	18DEC10	16JAN11	16JAN11	14FEB11	29	▶ MassDOT Review: Geotechnical Report														
D224	MassDOT Review: Project Web Site	2	PHAS 2	149.200		MDOT	30	28DEC10	26JAN11	16JAN11	14FEB11	19	▶ MassDOT Review: Project Web Site														
D110	MassDOT Review: 100% Design PS&E (Bridge)	2	PHAS 2			MDOT	30	30DEC10	28JAN11	30DEC10	28JAN11	0	▶ MassDOT Review: 100% Design PS&E (Bridge)														
D111	MassDOT Review: 100% Design PS&E (Highway)	2	PHAS 2			MDOT	30	14JAN11	12FEB11	16JAN11	14FEB11	2	▶ MassDOT Review: 100% Design PS&E (Highway)														
Permitting																											
D280	Submit: SWPPP	1	PHAS2A	756.010		JFWDB	15	22DEC10	13JAN11	10JAN11	28JAN11	11	▶ Submit: SWPPP														
D204	JFW Submit NPDES – Notice of Intent to EPA	1	PHAS2A	756.010		JFW	1	14JAN11	14JAN11	25FEB11	25FEB11	29	⚠ JFW Submit NPDES – Notice of Intent to EPA														
D282	MassDOT Review: SWPPP	2	PHAS2A			MDOT	30	14JAN11	12FEB11	31JAN11	01MAR11	17	▶ MassDOT Review: SWPPP														
D214	MassDOT Submit NPDES – Notice of Intent to EPA	1	PHAS2A			MDOT	1	14FEB11	14FEB11	02MAR11	02MAR11	11	⚠ MassDOT Submit NPDES – Notice of Intent to EPA														
Primary Submittals																											
G106	Submit: Schedule of Values	1	PHAS 3			JFW	30	04OCT10	16NOV10	10JUN11	21JUL11	172	▶ Submit: Schedule of Values														
G110	Submit: Baseline Schedule	1	PHAS 3	100.010		JFW	20	04OCT10	01NOV10	16DEC10	14JAN11	50	▶ Submit: Baseline Schedule														
G114	Submit: Construction Health & Safety Plan	1	PHAS 3			JFW	15	04OCT10	25OCT10	23DEC10	14JAN11	55	▶ Submit: Construction Health & Safety Plan														
G120	Submit: Project Management Plan	1	PHAS 3			JFWDB	16	04OCT10	26OCT10	22DEC10	14JAN11	54	▶ Submit: Project Management Plan														
G130	Submit: Monthly Cash Flow Projection	1	PHAS 3			JFW	30	04OCT10	16NOV10	02DEC10	14JAN11	40	▶ Submit: Monthly Cash Flow Projection														
D240	Submit: Quality Systems Manual	1	PHAS 3			JFWDB	9	14OCT10	26OCT10	19OCT10	29OCT10	3	▶ Submit: Quality Systems Manual														
G116	MassDOT Review: Construction Health & Safety	2	PHAS 3			MDOT	30	26OCT10	24NOV10	16JAN11	14FEB11	82	▶ MassDOT Review: Construction Health & Safety Plan														

Start Date 21JUL10
Finish Date 19AUG11
Data Date 21JUL10
Run Date 08FEB11 14:03



000B

J.F. White Contracting Co.
Cedar St. Over Rt. 9 - Wellesley, MA
massDOT

Sheet 1 of 4

Revised Baseline Schedule
Rev 0
Bar Chart

Date	Revision	Checked	Approved

Activity ID	Activity Description	Cal ID	PHAS	Cost Account	RESP	LOCN	Orig Dur	Early Start	Early Finish	Late Start	Late Finish	Total Float	2010						2011								
													JUL	AUG	SEP	OCT	NOV	DEC	JAN	FEB	MAR	APR	MAY	JUN	JUL	AUG	SEP
D242	MassDOT Review: Quality Systems Manual	2	PHAS 3		MDOT		30	27OCT10	25NOV10	30OCT10	28NOV10	3															MassDOT Review: Quality Systems Manual
G122	MassDOT Review: Project Management Plan	2	PHAS 3		MDOT		30	27OCT10	25NOV10	16JAN11	14FEB11	81															MassDOT Review: Project Management Plan
G112	MassDOT Review: Baseline Schedule	2	PHAS 3	100.010	MDOT		30	02NOV10	01DEC10	16JAN11	14FEB11	75															MassDOT Review: Baseline Schedule
G108	MassDOT Review: Schedule of Values	2	PHAS 3		MDOT		30	17NOV10	16DEC10	22JUL11	20AUG11	247															MassDOT Review: Schedule of Values
G132	MassDOT Review: Monthly Cash Flow Projection	2	PHAS 3		MDOT		30	17NOV10	16DEC10	16JAN11	14FEB11	60															MassDOT Review: Monthly Cash Flow Projection
D210	Submit: Traffic Management Plans	1	PHAS 3	851.210	JFWDB		20	15DEC10	13JAN11	24JAN11	18FEB11	26															Submit: Traffic Management Plans
D290	Submit: Temp Bridge Deck Shoring Plan	1	PHAS 3	995.060	JFWDB		15	20DEC10	11JAN11	17JAN11	04FEB11	18															Submit: Temp Bridge Deck Shoring Plan
P100	Submit: Precast Abutment Caps - Shop Dwgs	1	PHAS 3	996.003	WILL		20	30DEC10	27JAN11	02FEB11	02MAR11	23															Submit: Precast Abutment Caps - Shop Dwgs
P200	Submit: Structural Steel Shop Dwgs	1	PHAS 3	995.060	SAUGU		20	30DEC10	27JAN11	30DEC10	27JAN11	0															Submit: Structural Steel Shop Dwgs
P240	Submit: Structural Steel Erection Plan	1	PHAS 3	995.060	SAUGU		15	30DEC10	20JAN11	04FEB11	25FEB11	25															Submit: Structural Steel Erection Plan
P292	Submit: SIP Decking Shop Dwgs	1	PHAS 3	995.060	BENZ		10	30DEC10	13JAN11	02FEB11	15FEB11	23															Submit: SIP Decking Shop Dwgs
P224	Submit: Elastomeric Bearings Shop Dwgs	1	PHAS 3	995.060	DSBRN		15	03JAN11	21JAN11	16FEB11	09MAR11	32															Submit: Elastomeric Bearings Shop Dwgs
D292	MassDOT Review:: Temp Br Deck Shoring Plan	2	PHAS 3	995.060	MDOT		30	12JAN11	10FEB11	05FEB11	06MAR11	24															MassDOT Review:: Temp Br Deck Shoring Plan
D212	MassDOT Review:: Traffic Management Plans	2	PHAS 3	851.210	MDOT		30	14JAN11	12FEB11	19FEB11	20MAR11	36															MassDOT Review:: Traffic Management Plans
P294	JFWDB Review/Approve: SIP Decking Shop Dwgs	1	PHAS 3	995.060	JFWDB		10	14JAN11	27JAN11	16FEB11	02MAR11	23															JFWDB Review/Approve: SIP Decking Shop Dwgs
P242	MassDOT R&A: Structural Steel Erection Plan	2	PHAS 3	995.060	MDOT		30	21JAN11	19FEB11	26FEB11	27MAR11	36															MassDOT R&A: Structural Steel Erection Plan
P226	JFWBD R&A Elastomeric Bearings Shop Dwgs	1	PHAS 3	995.060	JFWDB		10	24JAN11	04FEB11	10MAR11	23MAR11	32															JFWBD R&A Elastomeric Bearings Shop Dwgs
P102	JFWBD R&A Precast Abutment Caps- Shop Dwgs	1	PHAS 3	996.003	JFWDB		10	28JAN11	10FEB11	03MAR11	16MAR11	23															JFWBD R&A Precast Abutment Caps- Shop Dwgs
P202	JFWBD R&A Structural Steel Shop Dwgs	1	PHAS 3	995.060	JFWDB		10	28JAN11	10FEB11	28JAN11	10FEB11	0															JFWBD R&A Structural Steel Shop Dwgs
D250	Submit: Demolition Plan	1	PHAS 3	115.100	TESTA		20	14FEB11	14MAR11	03MAY11	31MAY11	55															Submit: Demolition Plan
D260	Submit: SPMT/Bridge Installation Plan	1	PHAS 3	998.100	RIGG		20	14FEB11	14MAR11	03MAY11	31MAY11	55															Submit: SPMT/Bridge Installation Plan
P234	Submit: Traffic Signal Materials	1	PHAS 3	874.800	TRAFF		20	14FEB11	14MAR11	01APR11	28APR11	33															Submit: Traffic Signal Materials
P244	Submit: Concrete Design Mix	1	PHAS 3	995.060	CIP		10	14FEB11	28FEB11	07MAR11	18MAR11	14															Submit: Concrete Design Mix
P248	Submit: HMA Design Mix	1	PHAS 3	472.110	PAVE		10	14FEB11	28FEB11	02JUN11	15JUN11	76															Submit: HMA Design Mix
P304	Submit: Bridge Deck Waterproofing	1	PHAS 3	995.060	WTRP		10	14FEB11	28FEB11	01JUN11	14JUN11	75															Submit: Bridge Deck Waterproofing
P282	Submit: Deck/Sidewalk/Barrier Rebar Shop Dwgs	1	PHAS 3	995.060	REGIS		12	15FEB11	03MAR11	16FEB11	04MAR11	1															Submit: Deck/Sidewalk/Barrier Rebar Shop Dwgs
P246	JFWBD R&A Concrete Design Mix	1	PHAS 3	995.060	JFWDB		10	01MAR11	14MAR11	21MAR11	01APR11	14															JFWBD R&A Concrete Design Mix
P250	JFWBD R&A HMA Design Mix	1	PHAS 3	472.110	JFWDB		10	01MAR11	14MAR11	16JUN11	29JUN11	76															JFWBD R&A HMA Design Mix
P252	Submit: Guard Rail Shop Dwgs	1	PHAS 3	472.110	MCCOY		20	01MAR11	28MAR11	05MAY11	02JUN11	47															Submit: Guard Rail Shop Dwgs
P258	Submit: Striping Materials	1	PHAS 3	874.800	MARK		20	01MAR11	28MAR11	08JUN11	05JUL11	70															Submit: Striping Materials
P272	Submit: Rebar Shop Dwgs for Wing Walls	1	PHAS 3	995.050	REGIS		10	01MAR11	14MAR11	11MAY11	24MAY11	51															Submit: Rebar Shop Dwgs for Wing Walls
P314	JFWDB Review: Bridge Deck Waterproofing	1	PHAS 3	995.060	WTRP		10	01MAR11	14MAR11	15JUN11	28JUN11	75															JFWDB Review: Bridge Deck Waterproofing
P284	JFWBD R&A Deck/Sidewalk/Barrier Rebar Shop	1	PHAS 3	995.060	JFWDB		10	04MAR11	17MAR11	07MAR11	18MAR11	1															JFWBD R&A Deck/Sidewalk/Barrier Rebar Shop Dwgs
D252	MassDOT Review:: Demolition Plan	2	PHAS 3	115.100	MDOT		30	15MAR11	13APR11	01JUN11	30JUN11	78															MassDOT Review:: Demolition Plan
D262	MassDOT Review: SPMT/Bridge Installation Plan	2	PHAS 3	998.100	MDOT		30	15MAR11	13APR11	01JUN11	30JUN11	78															MassDOT Review: SPMT/Bridge Installation Plan
P236	JFWBD R&A Traffic Signal Materials	1	PHAS 3	874.800	JFWDB		10	15MAR11	28MAR11	29APR11	12MAY11	33															JFWBD R&A Traffic Signal Materials
P274	JFWBD R&A Rebar Shop Dwgs for Wing Walls	1	PHAS 3	995.050	JFWDB		10	15MAR11	28MAR11	25MAY11	08JUN11	51															JFWBD R&A Rebar Shop Dwgs for Wing Walls

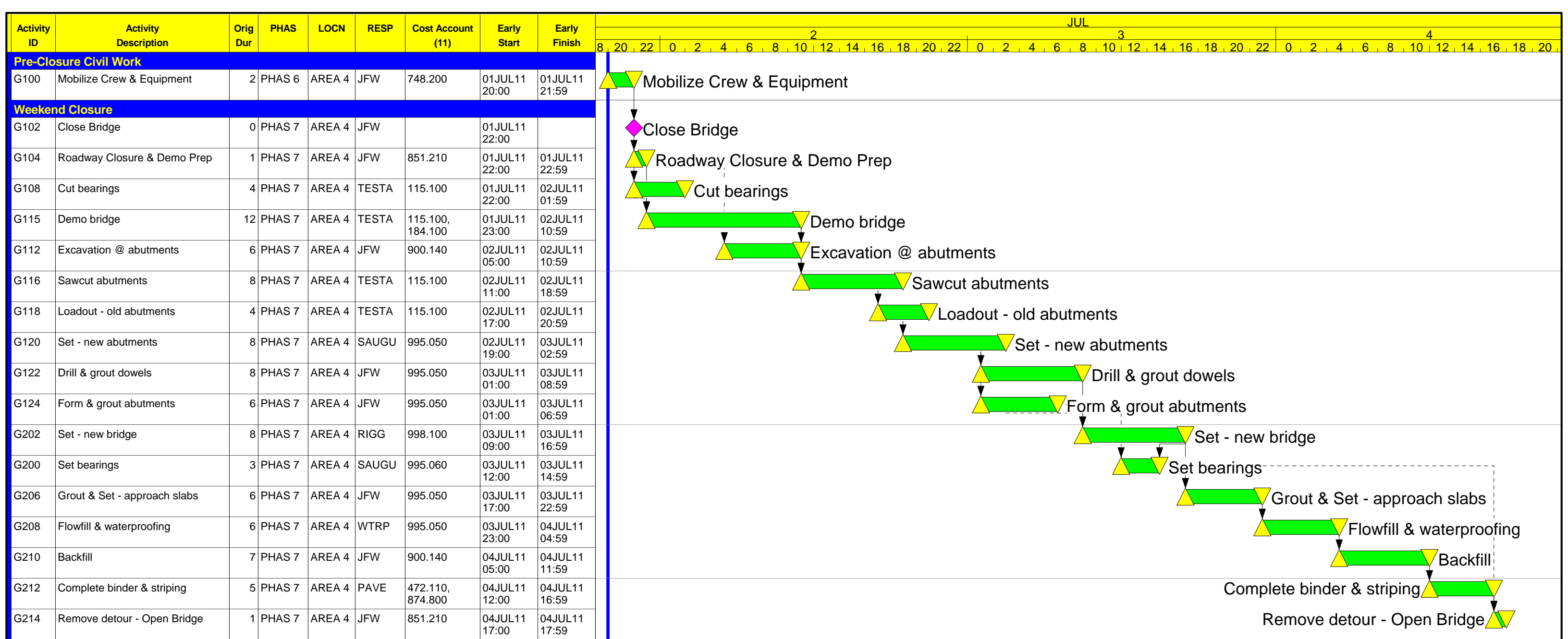
Start Date 21JUL10
Finish Date 19AUG11
Data Date 21JUL10
Run Date 08FEB11 14:03

▶ Early Bar
▶ Progress Bar
▶ Critical Activity

000B
J.F. White Contracting Co.
Cedar St. Over Rt. 9 - Wellesley, MA
massDOT

Sheet 2 of 4
Revised Baseline Schedule
Rev 0
Bar Chart

Date	Revision	Checked	Approved



Start Date	01JUL11 20:00		Early Bar
Finish Date	04JUL11 17:59		Progress Bar
Data Date	01JUL11 20:00		Critical Activity
Run Date	11FEB11 10:30		

H00B	
------	--

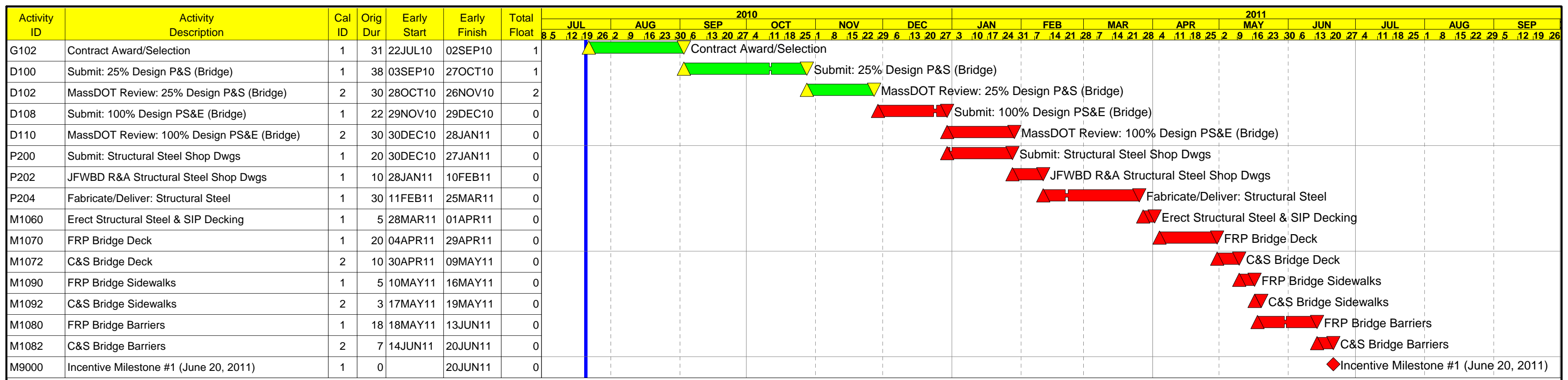
Sheet 1 of 1

J.F. White Contracting Co.
Wellesley Route 9 & Cedar St.

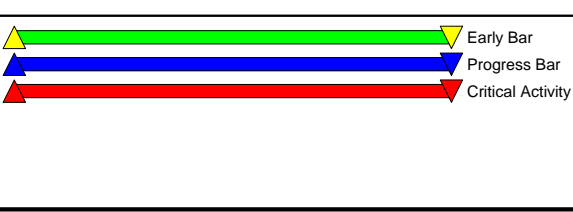
Baseline Schedule
Rev 0
Hourly
for
July 1-4 , 2011

Date	Revision	Checked	Approved

Section 3 – Critical Path Plot



Start Date	21JUL10		Early Bar
Finish Date	19AUG11		Progress Bar
Data Date	21JUL10		Critical Activity
Run Date	11FEB11 09:25		



000B

Sheet 1 of 1

J.F. White Contracting Co.

Cedar St. Over Rt. 9 - Wellesley, MA

MassDOT

Baseline Schedule
Rev 0
Critical Path to MS#1

Date	Revision	Checked	Approved

Activity ID	Activity Description	Cal ID	Orig Dur	Early Start	Early Finish	Total Float	2011													
							JUN			JUL			AUG			SEP				
							6	13	20	27	4	11	18	25	1	8	15	22	29	5
N1000	Exc/Rem Extg Sidewalks/Curb/G Rail Cedar/Worc St	2	6	20JUN11	25JUN11	0	Exc/Rem Extg Sidewalks/Curb/G Rail Cedar/Worc St													
N1040	Temporary Shoring of Utility Poles	2	1	20JUN11	20JUN11	0	Temporary Shoring of Utility Poles													
N1022	Rte 9 Median Modifications	2	3	21JUN11	23JUN11	0	Rte 9 Median Modifications													
N1082	Install HMA Sidewalk Rte 9	2	1	24JUN11	24JUN11	0	Install HMA Sidewalk Rte 9													
N1024	Detour Work & Pedestrian Walkways	2	3	25JUN11	27JUN11	0	Detour Work & Pedestrian Walkways													
N1026	Detour Work & Widen Ramps to 2 Lanes	2	3	28JUN11	30JUN11	0	Detour Work & Widen Ramps to 2 Lanes													
N2000	WEEKEND CLOSURE/DETOUR ROUTE 9 (SEE HOURLY CPM)	3	4	01JUL11*	04JUL11	0	WEEKEND CLOSURE/DETOUR ROUTE 9 (SEE HOURLY CPM)													
N2050	Incentive Milestone #2 (July 4, 2011)	2	0		04JUL11	0	Incentive Milestone #2 (July 4, 2011)													



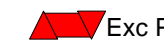







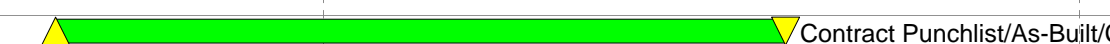

Start Date	21JUL10		Early Bar
Finish Date	19AUG11		Progress Bar
Data Date	21JUL10		Critical Activity
Run Date	11FEB11 09:29		




000B	
------	--

J.F. White Contracting Co.
Cedar St. Over Rt. 9 - Wellesley, MA
MassDOT

Sheet 1 of 1
 Baseline Schedule
 Rev 0
 Critical Path to MS#2

Date	Revision	Checked	Approved

Activity ID	Activity Description	Cal ID	Orig Dur	Early Start	Early Finish	Total Float	2011												
							JUN			JUL			AUG			SEP			
							13	20	27	4	11	18	25	1	8	15	22	29	5
N1000	Exc/Rem Extg Sidewalks/Curb/G Rail Cedar/Worc St	2	6	20JUN11	25JUN11	0	 Exc/Rem Extg Sidewalks/Curb/G Rail Cedar/Worc St												
N1040	Temporary Shoring of Utility Poles	2	1	20JUN11	20JUN11	0	 Temporary Shoring of Utility Poles												
N1010	Exc Pilasters & End Posts Cedar/Worc Sts	2	2	21JUN11	22JUN11	0	 Exc Pilasters & End Posts Cedar/Worc Sts												
N1014	FRP Barriers & End Posts Cedar/Worc Sts	2	10	23JUN11	02JUL11	0	 FRP Barriers & End Posts Cedar/Worc Sts												
N1016	C&S Barriers & End Posts Cedar/Worc Sts	2	5	03JUL11	07JUL11	0	 C&S Barriers & End Posts Cedar/Worc Sts												
N3052	FRP Pilasters Cedar/Worc Sts	2	7	08JUL11	14JUL11	0	 FRP Pilasters Cedar/Worc Sts												
N3054	C&S Pilasters Cedar/Worc Sts	2	5	15JUL11	19JUL11	0	 C&S Pilasters Cedar/Worc Sts												
N3032	Fine Grading/Loam/Seed & Landscaping	2	3	18JUL11	20JUL11	0	 Fine Grading/Loam/Seed & Landscaping												
N3056	Backfill Pilasters Cedar/Worc Sts	2	2	18JUL11	19JUL11	0	 Backfill Pilasters Cedar/Worc Sts												
N3002	Incentive Milestone #3 (July 20, 2011)	2	0		20JUL11	0	 Incentive Milestone #3 (July 20, 2011)												
N4000	Contract Punchlist/As-Built/Closeout	2	30	21JUL11	19AUG11	1	 Contract Punchlist/As-Built/Closeout												
N4001	Incentive Milestone #4 (August 20, 2011)	2	0		19AUG11	1	Incentive Milestone #4 (August 20, 2011) 												

Start Date	21JUL10		Early Bar
Finish Date	19AUG11		Progress Bar
Data Date	21JUL10		Critical Activity
Run Date	11FEB11 09:32		

000B	
------	--

J.F. White Contracting Co.
 Cedar St. Over Rt. 9 - Wellesley, MA
 MassDOT

Sheet 1 of 1
 Baseline Schedule
 Rev 0
 Critical Path to MS#3&4

Date	Revision	Checked	Approved

Section 4 – Activity Report with
Predecessors and Successors

REPORT DATE 8FEB11 RUN NO. 324
14:18

START DATE 21JUL10 FIN DATE 31AUG11*

Activity Report - Predecessors & Successors

DATA DATE 21JUL10 PAGE NO. 1

ACTIVITY ID	ORIG DUR	REM DUR	CAL	%	CODE	ACTIVITY DESCRIPTION	EARLY START	EARLY FINISH	LATE START	LATE FINISH	TOTAL FLOAT
D100	38	38	1	0	JFWDB	Submit: 25% Design P&S (Bridge)	3SEP10	27OCT10	6SEP10	28OCT10	1
..G102	*	31	31	1	0 PR	Contract Award/Selection	22JUL10	2SEP10	23JUL10	3SEP10	1
..D101	*	38	38	1	0 SU SS 10	Submit: 25% Design P&S (Highway)	17SEP10	10NOV10	20SEP10	12NOV10	1
..D102	*	30	30	2	0 SU	MassDOT Review: 25% Design P&S (Bridge)	28OCT10	26NOV10	30OCT10	28NOV10	2
..D103	*	1	1	1	0 SU FS 5	Early Release of Structural Steel	4NOV10	4NOV10	30NOV10	30NOV10	16
..D200	*	10	10	1	0 SU FS 3	Field Survey	2NOV10	16NOV10	10DEC10	23DEC10	26
..P200		20	20	1	0 SU	Submit: Structural Steel Shop Dwgs	30DEC10	27JAN11	30DEC10	27JAN11	0
D101	38	38	1	0	JFWDB	Submit: 25% Design P&S (Highway)	17SEP10	10NOV10	20SEP10	12NOV10	1
..D100	*	38	38	1	0 PR SS 10	Submit: 25% Design P&S (Bridge)	3SEP10	27OCT10	6SEP10	28OCT10	1
..D105	*	30	30	2	0 SU	MassDOT Review: 25% Design P&S (Highway)	11NOV10	10DEC10	14NOV10	13DEC10	3
D102	30	30	2	0	MDOT	MassDOT Review: 25% Design P&S (Bridge)	28OCT10	26NOV10	30OCT10	28NOV10	2
..D100	*	38	38	1	0 PR	Submit: 25% Design P&S (Bridge)	3SEP10	27OCT10	6SEP10	28OCT10	1
..D242	*	30	30	2	0 PR FF 0	MassDOT Review: Quality Systems Manual	27OCT10	25NOV10	30OCT10	28NOV10	3
..D108	*	22	22	1	0 SU	Submit: 100% Design PS&E (Bridge)	29NOV10	29DEC10	29NOV10	29DEC10	0
..D206	*	1	1	1	0 SU FS 19	Public Meeting	16DEC10	16DEC10	14FEB11	14FEB11	40
..D290	*	15	15	1	0 SU	Submit: Temp Bridge Deck Shoring Plan	20DEC10	11JAN11	17JAN11	4FEB11	18
D103	1	1	1	0	JFWDB	Early Release of Structural Steel	4NOV10	4NOV10	30NOV10	30NOV10	16
..D100	*	38	38	1	0 PR FS 5	Submit: 25% Design P&S (Bridge)	3SEP10	27OCT10	6SEP10	28OCT10	1
..P203	*	50	50	1	0 SU	Procure Structural Steel Material	5NOV10	19JAN11	1DEC10	10FEB11	16
D104	1	1	1	0	JFWDB	Early Release of Elastomeric Bearings	30DEC10	30DEC10	15FEB11	15FEB11	32
..D108	*	22	22	1	0 PR	Submit: 100% Design PS&E (Bridge)	29NOV10	29DEC10	29NOV10	29DEC10	0
..P224	*	15	15	1	0 SU	Submit: Elastomeric Bearings Shop Dwgs	3JAN11	21JAN11	16FEB11	9MAR11	32
D105	30	30	2	0	MDOT	MassDOT Review: 25% Design P&S (Highway)	11NOV10	10DEC10	14NOV10	13DEC10	3
..D101	*	38	38	1	0 PR	Submit: 25% Design P&S (Highway)	17SEP10	10NOV10	20SEP10	12NOV10	1
..D242	*	30	30	2	0 PR FF 0	MassDOT Review: Quality Systems Manual	27OCT10	25NOV10	30OCT10	28NOV10	3
..D109	*	22	22	1	0 SU	Submit: 100% Design PS&E (Highway)	13DEC10	13JAN11	14DEC10	14JAN11	1
D108	22	22	1	0	JFWDB	Submit: 100% Design PS&E (Bridge)	29NOV10	29DEC10	29NOV10	29DEC10	0
..D102	*	30	30	2	0 PR	MassDOT Review: 25% Design P&S (Bridge)	28OCT10	26NOV10	30OCT10	28NOV10	2
..D104	*	1	1	1	0 SU	Early Release of Elastomeric Bearings	30DEC10	30DEC10	15FEB11	15FEB11	32
..D110	*	30	30	2	0 SU	MassDOT Review: 100% Design PS&E (Bridge)	30DEC10	28JAN11	30DEC10	28JAN11	0
..D111	*	30	30	2	0 SU	MassDOT Review: 100% Design PS&E (Highway)	14JAN11	12FEB11	16JAN11	14FEB11	2
..D205	*	15	15	1	0 SU SS 0	Submit: Geotechnical Report	29NOV10	17DEC10	23DEC10	14JAN11	18
..D222	*	20	20	1	0 SU SS 0	Develop Project Web Site	29NOV10	27DEC10	16DEC10	14JAN11	13
..P240	*	15	15	1	0 SU	Submit: Structural Steel Erection Plan	30DEC10	20JAN11	4FEB11	25FEB11	25
..P292	*	10	10	1	0 SU	Submit: SIP Decking Shop Dwgs	30DEC10	13JAN11	2FEB11	15FEB11	23
D109	22	22	1	0	JFWDB	Submit: 100% Design PS&E (Highway)	13DEC10	13JAN11	14DEC10	14JAN11	1
..D105	*	30	30	2	0 PR	MassDOT Review: 25% Design P&S (Highway)	11NOV10	10DEC10	14NOV10	13DEC10	3
..D203	*	2	2	1	0 PR FF 10	Soil Borings @ Traffic Signals	16NOV10	17NOV10	29DEC10	30DEC10	29
..D111	*	30	30	2	0 SU	MassDOT Review: 100% Design PS&E (Highway)	14JAN11	12FEB11	16JAN11	14FEB11	2
..D210	*	20	20	1	0 SU SS 2	Submit: Traffic Management Plans	15DEC10	13JAN11	24JAN11	18FEB11	26
..D280	*	15	15	1	0 SU SS 7	Submit: SWPPP	22DEC10	13JAN11	10JAN11	28JAN11	11
D110	30	30	2	0	MDOT	MassDOT Review: 100% Design PS&E (Bridge)	30DEC10	28JAN11	30DEC10	28JAN11	0
..D108	*	22	22	1	0 PR	Submit: 100% Design PS&E (Bridge)	29NOV10	29DEC10	29NOV10	29DEC10	0

REPORT DATE 8FEB11 RUN NO. 324
14:18

START DATE 21JUL10 FIN DATE 31AUG11*

SR-22

DATA DATE 21JUL10 PAGE NO. 2

ACTIVITY ID	ORIG DUR	REM DUR	CAL	%	CODE	ACTIVITY DESCRIPTION	EARLY START	EARLY FINISH	LATE START	LATE FINISH	TOTAL FLOAT
..M1000	10	10	1	0	SU	Mobilize Job Trailers @ Site	14FEB11	28FEB11	15FEB11	1MAR11	1
..P100	* 20	20	1	0	SU SS	0 Submit: Precast Abutment Caps - Shop Dwgs	30DEC10	27JAN11	2FEB11	2MAR11	23
..P200	* 20	20	1	0	SU SS	0 Submit: Structural Steel Shop Dwgs	30DEC10	27JAN11	30DEC10	27JAN11	0
D111	30	30	2	0	MDOT	MassDOT Review: 100% Design PS&E (Highway)	14JAN11	12FEB11	16JAN11	14FEB11	2
..D108	22	22	1	0	PR	Submit: 100% Design PS&E (Bridge)	29NOV10	29DEC10	29NOV10	29DEC10	0
..D109	* 22	22	1	0	PR	Submit: 100% Design PS&E (Highway)	13DEC10	13JAN11	14DEC10	14JAN11	1
..D207	30	30	2	0	PR FF	0 MassDOT Review: Geotechnical Report	18DEC10	16JAN11	16JAN11	14FEB11	29
..D250	* 20	20	1	0	SU	Submit: Demolition Plan	14FEB11	14MAR11	3MAY11	31MAY11	55
..D260	* 20	20	1	0	SU	Submit: SPMT/Bridge Installation Plan	14FEB11	14MAR11	3MAY11	31MAY11	55
..M1000	* 10	10	1	0	SU	Mobilize Job Trailers @ Site	14FEB11	28FEB11	15FEB11	1MAR11	1
..M1012	* 1	1	2	0	SU	MassDOT Obtain Temp Easements @ Cedar/Worc Sts	13FEB11	13FEB11	9JUN11	9JUN11	116
D200	10	10	1	0	JFW	Field Survey	2NOV10	16NOV10	10DEC10	23DEC10	26
..D100	* 38	38	1	0	PR FS	3 Submit: 25% Design P&S (Bridge)	3SEP10	27OCT10	6SEP10	28OCT10	1
..D202	* 1	1	1	0	SU SS	8 Soil Borings @ Temp Bridge Frame	15NOV10	15NOV10	22DEC10	22DEC10	26
..D203	2	2	1	0	SU SS	8 Soil Borings @ Traffic Signals	16NOV10	17NOV10	29DEC10	30DEC10	29
D202	1	1	1	0	CARRD	Soil Borings @ Temp Bridge Frame	15NOV10	15NOV10	22DEC10	22DEC10	26
..D200	* 10	10	1	0	PR SS	8 Field Survey	2NOV10	16NOV10	10DEC10	23DEC10	26
..G104	0	0	1	0	PR	Notice to Proceed	4OCT10	7OCT10			3
..D203	* 2	2	1	0	SU	Soil Borings @ Traffic Signals	16NOV10	17NOV10	29DEC10	30DEC10	29
..D205	15	15	1	0	SU	Submit: Geotechnical Report	29NOV10	17DEC10	23DEC10	14JAN11	18
D203	2	2	1	0	CARRD	Soil Borings @ Traffic Signals	16NOV10	17NOV10	29DEC10	30DEC10	29
..D200	10	10	1	0	PR SS	8 Field Survey	2NOV10	16NOV10	10DEC10	23DEC10	26
..D202	* 1	1	1	0	PR	Soil Borings @ Temp Bridge Frame	15NOV10	15NOV10	22DEC10	22DEC10	26
..G104	0	0	1	0	PR	Notice to Proceed	4OCT10	7OCT10			3
..D109	22	22	1	0	SU FF	10 Submit: 100% Design PS&E (Highway)	13DEC10	13JAN11	14DEC10	14JAN11	1
D204	1	1	1	0	JFW	JFW Submit NPDES - Notice of Intent to EPA	14JAN11	14JAN11	25FEB11	25FEB11	29
..D280	* 15	15	1	0	PR	Submit: SWPPP	22DEC10	13JAN11	10JAN11	28JAN11	11
..M1010	3	3	1	0	SU FS	5 Set-up/Install Environmental Controls	22FEB11	24FEB11	7MAR11	9MAR11	9
D205	15	15	1	0	JFWDB	Submit: Geotechnical Report	29NOV10	17DEC10	23DEC10	14JAN11	18
..D108	* 22	22	1	0	PR SS	0 Submit: 100% Design PS&E (Bridge)	29NOV10	29DEC10	29NOV10	29DEC10	0
..D202	1	1	1	0	PR	Soil Borings @ Temp Bridge Frame	15NOV10	15NOV10	22DEC10	22DEC10	26
..D207	* 30	30	2	0	SU	MassDOT Review: Geotechnical Report	18DEC10	16JAN11	16JAN11	14FEB11	29
..D290	* 15	15	1	0	SU	Submit: Temp Bridge Deck Shoring Plan	20DEC10	11JAN11	17JAN11	4FEB11	18
D206	1	1	1	0		Public Meeting	16DEC10	16DEC10	14FEB11	14FEB11	40
..D102	* 30	30	2	0	PR FS	19 MassDOT Review: 25% Design P&S (Bridge)	28OCT10	26NOV10	30OCT10	28NOV10	2
..M1000	10	10	1	0	SU FF	10 Mobilize Job Trailers @ Site	14FEB11	28FEB11	15FEB11	1MAR11	1
D207	30	30	2	0	MDOT	MassDOT Review: Geotechnical Report	18DEC10	16JAN11	16JAN11	14FEB11	29
..D205	* 15	15	1	0	PR	Submit: Geotechnical Report	29NOV10	17DEC10	23DEC10	14JAN11	18
..D111	30	30	2	0	SU FF	0 MassDOT Review: 100% Design PS&E (Highway)	14JAN11	12FEB11	16JAN11	14FEB11	2
D210	20	20	1	0	JFWDB	Submit: Traffic Management Plans	15DEC10	13JAN11	24JAN11	18FEB11	26
..D109	* 22	22	1	0	PR SS	2 Submit: 100% Design PS&E (Highway)	13DEC10	13JAN11	14DEC10	14JAN11	1

REPORT DATE 8FEB11 RUN NO. 324

START DATE 21JUL10 FIN DATE 31AUG11*

14:18

SR-22

DATA DATE 21JUL10 PAGE NO. 3

ACTIVITY ID	ORIG DUR	REM DUR	CAL	%	CODE	ACTIVITY DESCRIPTION	EARLY START	EARLY FINISH	LATE START	LATE FINISH	TOTAL FLOAT	
..D212	*	30	30	2	0	SU	MassDOT Review:: Traffic Management Plans	14JAN11	12FEB11	19FEB11	20MAR11	36
D212		30	30	2	0	MDOT	MassDOT Review:: Traffic Management Plans	14JAN11	12FEB11	19FEB11	20MAR11	36
..D210	*	20	20	1	0	PR	Submit: Traffic Management Plans	15DEC10	13JAN11	24JAN11	18FEB11	26
..M1052	*	5	5	1	0	SU	Construct Cedar St NE HMA Sidewalk	14FEB11	18FEB11	21MAR11	25MAR11	24
D214		1	1	1	0	MDOT	MassDOT Submit NPDES - Notice of Intent to EPA	14FEB11	14FEB11	2MAR11	2MAR11	11
..D282	*	30	30	2	0	PR	MassDOT Review: SWPPP	14JAN11	12FEB11	31JAN11	1MAR11	17
..M1002		2	2	1	0	SU FS	5 Grade & Prep Area for Bridge Frame	25FEB11	28FEB11	10MAR11	11MAR11	9
D222		20	20	1	0	JFW	Develop Project Web Site	29NOV10	27DEC10	16DEC10	14JAN11	13
..D108	*	22	22	1	0	PR SS	0 Submit: 100% Design PS&E (Bridge)	29NOV10	29DEC10	29NOV10	29DEC10	0
..D224	*	30	30	2	0	SU	MassDOT Review: Project Web Site	28DEC10	26JAN11	16JAN11	14FEB11	19
D224		30	30	2	0	MDOT	MassDOT Review: Project Web Site	28DEC10	26JAN11	16JAN11	14FEB11	19
..D222	*	20	20	1	0	PR	Develop Project Web Site	29NOV10	27DEC10	16DEC10	14JAN11	13
..M1000		10	10	1	0	SU	Mobilize Job Trailers @ Site	14FEB11	28FEB11	15FEB11	1MAR11	1
D240		9	9	1	0	JFWDB	Submit: Quality Systems Manual	14OCT10	26OCT10	19OCT10	29OCT10	3
..G104	*	0	0	1	0	PR FS	7 Notice to Proceed	4OCT10		7OCT10		3
..D242	*	30	30	2	0	SU	MassDOT Review: Quality Systems Manual	27OCT10	25NOV10	30OCT10	28NOV10	3
D242		30	30	2	0	MDOT	MassDOT Review: Quality Systems Manual	27OCT10	25NOV10	30OCT10	28NOV10	3
..D240	*	9	9	1	0	PR	Submit: Quality Systems Manual	14OCT10	26OCT10	19OCT10	29OCT10	3
..D102		30	30	2	0	SU FF	0 MassDOT Review: 25% Design P&S (Bridge)	28OCT10	26NOV10	30OCT10	28NOV10	2
..D105		30	30	2	0	SU FF	0 MassDOT Review: 25% Design P&S (Highway)	11NOV10	10DEC10	14NOV10	13DEC10	3
D250		20	20	1	0	TESTA	Submit: Demolition Plan	14FEB11	14MAR11	3MAY11	31MAY11	55
..D111	*	30	30	2	0	PR	MassDOT Review: 100% Design PS&E (Highway)	14JAN11	12FEB11	16JAN11	14FEB11	2
..D252	*	30	30	2	0	SU	MassDOT Review:: Demolition Plan	15MAR11	13APR11	1JUN11	30JUN11	78
D252		30	30	2	0	MDOT	MassDOT Review:: Demolition Plan	15MAR11	13APR11	1JUN11	30JUN11	78
..D250	*	20	20	1	0	PR	Submit: Demolition Plan	14FEB11	14MAR11	3MAY11	31MAY11	55
..N2000		4	4	3	0	SU	WEEKEND CLOSURE/DETOUR ROUTE 9 (SEE HOURLY CPM)	1JUL11*	4JUL11	1JUL11	4JUL11	0
D260		20	20	1	0	RIGG	Submit: SPMT/Bridge Installation Plan	14FEB11	14MAR11	3MAY11	31MAY11	55
..D111	*	30	30	2	0	PR	MassDOT Review: 100% Design PS&E (Highway)	14JAN11	12FEB11	16JAN11	14FEB11	2
..D262	*	30	30	2	0	SU	MassDOT Review: SPMT/Bridge Installation Plan	15MAR11	13APR11	1JUN11	30JUN11	78
..M1008	*	10	10	1	0	SU	Mobilize SPMT Equipment/Tools	15MAR11	28MAR11	7JUN11	20JUN11	59
D262		30	30	2	0	MDOT	MassDOT Review: SPMT/Bridge Installation Plan	15MAR11	13APR11	1JUN11	30JUN11	78
..D260	*	20	20	1	0	PR	Submit: SPMT/Bridge Installation Plan	14FEB11	14MAR11	3MAY11	31MAY11	55
..N2000		4	4	3	0	SU	WEEKEND CLOSURE/DETOUR ROUTE 9 (SEE HOURLY CPM)	1JUL11*	4JUL11	1JUL11	4JUL11	0
D280		15	15	1	0	JFWDB	Submit: SWPPP	22DEC10	13JAN11	10JAN11	28JAN11	11
..D109	*	22	22	1	0	PR SS	7 Submit: 100% Design PS&E (Highway)	13DEC10	13JAN11	14DEC10	14JAN11	1

REPORT DATE 8FEB11 RUN NO. 324
14:18

START DATE 21JUL10 FIN DATE 31AUG11*

SR-22

DATA DATE 21JUL10 PAGE NO. 4

ACTIVITY ID	ORIG DUR	REM DUR	CAL	%	CODE	ACTIVITY DESCRIPTION	EARLY START	EARLY FINISH	LATE START	LATE FINISH	TOTAL FLOAT	
..D204	*	1	1	1	0	SU	JFW Submit NPDES - Notice of Intent to EPA	14JAN11	14JAN11	25FEB11	25FEB11	29
..D282	*	30	30	2	0	SU	MassDOT Review: SWPPP	14JAN11	12FEB11	31JAN11	1MAR11	17
..M1010		3	3	1	0	SU	Set-up/Install Environmental Controls	22FEB11	24FEB11	7MAR11	9MAR11	9
D282		30	30	2	0	MDOT	MassDOT Review: SWPPP	14JAN11	12FEB11	31JAN11	1MAR11	17
..D280	*	15	15	1	0	PR	Submit: SWPPP	22DEC10	13JAN11	10JAN11	28JAN11	11
..D214	*	1	1	1	0	SU	MassDOT Submit NPDES - Notice of Intent to EPA	14FEB11	14FEB11	2MAR11	2MAR11	11
D290		15	15	1	0	JFWDB	Submit: Temp Bridge Deck Shoring Plan	20DEC10	11JAN11	17JAN11	4FEB11	18
..D102		30	30	2	0	PR	MassDOT Review: 25% Design P&S (Bridge)	28OCT10	26NOV10	30OCT10	28NOV10	2
..D205	*	15	15	1	0	PR	Submit: Geotechnical Report	29NOV10	17DEC10	23DEC10	14JAN11	18
..D292	*	30	30	2	0	SU	MassDOT Review:: Temp Br Deck Shoring Plan	12JAN11	10FEB11	5FEB11	6MAR11	24
D292		30	30	2	0	MDOT	MassDOT Review:: Temp Br Deck Shoring Plan	12JAN11	10FEB11	5FEB11	6MAR11	24
..D290	*	15	15	1	0	PR	Submit: Temp Bridge Deck Shoring Plan	20DEC10	11JAN11	17JAN11	4FEB11	18
..P230		5	5	1	0	SU	Procure Shoring Materials	14FEB11	18FEB11	7MAR11	11MAR11	14
G100		1	1	1	0		Proposal Due (July 21, 2010)	21JUL10	21JUL10	22JUL10	22JUL10	1
..G102	*	31	31	1	0	SU	Contract Award/Selection	22JUL10	2SEP10	23JUL10	3SEP10	1
G102		31	31	1	0		Contract Award/Selection	22JUL10	2SEP10	23JUL10	3SEP10	1
..G100	*	1	1	1	0	PR	Proposal Due (July 21, 2010)	21JUL10	21JUL10	22JUL10	22JUL10	1
..D100	*	38	38	1	0	SU	Submit: 25% Design P&S (Bridge)	3SEP10	27OCT10	6SEP10	28OCT10	1
..G104	*	0	0	1	0	SU FS	21 Notice to Proceed	4OCT10		7OCT10		3
G104		0	0	1	0		Notice to Proceed	4OCT10		7OCT10		3
..G102	*	31	31	1	0	PR FS	21 Contract Award/Selection	22JUL10	2SEP10	23JUL10	3SEP10	1
..D202		1	1	1	0	SU	Soil Borings @ Temp Bridge Frame	15NOV10	15NOV10	22DEC10	22DEC10	26
..D203		2	2	1	0	SU	Soil Borings @ Traffic Signals	16NOV10	17NOV10	29DEC10	30DEC10	29
..D240	*	9	9	1	0	SU FS	7 Submit: Quality Systems Manual	14OCT10	26OCT10	19OCT10	29OCT10	3
..G106	*	30	30	1	0	SU	Submit: Schedule of Values	4OCT10	16NOV10	10JUN11	21JUL11	172
..G110	*	20	20	1	0	SU	Submit: Baseline Schedule	4OCT10	1NOV10	16DEC10	14JAN11	50
..G114	*	15	15	1	0	SU	Submit: Construction Health & Safety Plan	4OCT10	25OCT10	23DEC10	14JAN11	55
..G120	*	16	16	1	0	SU	Submit: Project Management Plan	4OCT10	26OCT10	22DEC10	14JAN11	54
..G130	*	30	30	1	0	SU	Submit: Monthly Cash Flow Projection	4OCT10	16NOV10	2DEC10	14JAN11	40
G106		30	30	1	0	JFW	Submit: Schedule of Values	4OCT10	16NOV10	10JUN11	21JUL11	172
..G104	*	0	0	1	0	PR	Notice to Proceed	4OCT10		7OCT10		3
..G108	*	30	30	2	0	SU	MassDOT Review: Schedule of Values	17NOV10	16DEC10	22JUL11	20AUG11	247
G108		30	30	2	0	MDOT	MassDOT Review: Schedule of Values	17NOV10	16DEC10	22JUL11	20AUG11	247
..G106	*	30	30	1	0	PR	Submit: Schedule of Values	4OCT10	16NOV10	10JUN11	21JUL11	172
..N4000		30	30	2	0	SU FF	0 Contract Punchlist/As-Built/Closeout	21JUL11	19AUG11	22JUL11	20AUG11	1
G110		20	20	1	0	JFW	Submit: Baseline Schedule	4OCT10	1NOV10	16DEC10	14JAN11	50
..G104	*	0	0	1	0	PR	Notice to Proceed	4OCT10		7OCT10		3
..G112	*	30	30	2	0	SU	MassDOT Review: Baselline Schedule	2NOV10	1DEC10	16JAN11	14FEB11	75

REPORT DATE 8FEB11 RUN NO. 324
14:18

START DATE 21JUL10 FIN DATE 31AUG11*

SR-22

DATA DATE 21JUL10 PAGE NO. 5

ACTIVITY ID	ORIG DUR	REM DUR	CAL	%	CODE	ACTIVITY DESCRIPTION	EARLY START	EARLY FINISH	LATE START	LATE FINISH	TOTAL FLOAT
G112	30	30	2	0	MDOT	MassDOT Review: Baselline Schedule	2NOV10	1DEC10	16JAN11	14FEB11	75
..G110	* 20	20	1	0	PR	Submit: Baseline Schedule	4OCT10	1NOV10	16DEC10	14JAN11	50
..M1000	10	10	1	0	SU	Mobilize Job Trailers @ Site	14FEB11	28FEB11	15FEB11	1MAR11	1
G114	15	15	1	0	JFW	Submit: Construction Health & Safety Plan	4OCT10	25OCT10	23DEC10	14JAN11	55
..G104	* 0	0	1	0	PR	Notice to Proceed	4OCT10		7OCT10		3
..G116	* 30	30	2	0	SU	MassDOT Review: Construction Health & Safety Plan	26OCT10	24NOV10	16JAN11	14FEB11	82
G116	30	30	2	0	MDOT	MassDOT Review: Construction Health & Safety Plan	26OCT10	24NOV10	16JAN11	14FEB11	82
..G114	* 15	15	1	0	PR	Submit: Construction Health & Safety Plan	4OCT10	25OCT10	23DEC10	14JAN11	55
..M1000	10	10	1	0	SU	Mobilize Job Trailers @ Site	14FEB11	28FEB11	15FEB11	1MAR11	1
G120	16	16	1	0	JFWDB	Submit: Project Management Plan	4OCT10	26OCT10	22DEC10	14JAN11	54
..G104	* 0	0	1	0	PR	Notice to Proceed	4OCT10		7OCT10		3
..G122	* 30	30	2	0	SU	MassDOT Review: Project Management Plan	27OCT10	25NOV10	16JAN11	14FEB11	81
G122	30	30	2	0	MDOT	MassDOT Review: Project Management Plan	27OCT10	25NOV10	16JAN11	14FEB11	81
..G120	* 16	16	1	0	PR	Submit: Project Management Plan	4OCT10	26OCT10	22DEC10	14JAN11	54
..M1000	10	10	1	0	SU	Mobilize Job Trailers @ Site	14FEB11	28FEB11	15FEB11	1MAR11	1
G130	30	30	1	0	JFW	Submit: Monthly Cash Flow Projection	4OCT10	16NOV10	2DEC10	14JAN11	40
..G104	* 0	0	1	0	PR	Notice to Proceed	4OCT10		7OCT10		3
..G132	* 30	30	2	0	SU	MassDOT Review: Monthly Cash Flow Projection	17NOV10	16DEC10	16JAN11	14FEB11	60
G132	30	30	2	0	MDOT	MassDOT Review: Monthly Cash Flow Projection	17NOV10	16DEC10	16JAN11	14FEB11	60
..G130	* 30	30	1	0	PR	Submit: Monthly Cash Flow Projection	4OCT10	16NOV10	2DEC10	14JAN11	40
..M1000	10	10	1	0	SU	Mobilize Job Trailers @ Site	14FEB11	28FEB11	15FEB11	1MAR11	1
M1000	10	10	1	0	JFW	Mobilize Job Trailers @ Site	14FEB11	28FEB11	15FEB11	1MAR11	1
..D110	30	30	2	0	PR	MassDOT Review: 100% Design PS&E (Bridge)	30DEC10	28JAN11	30DEC10	28JAN11	0
..D111	* 30	30	2	0	PR	MassDOT Review: 100% Design PS&E (Highway)	14JAN11	12FEB11	16JAN11	14FEB11	2
..D206	1	1	1	0	PR FF 10	Public Meeting	16DEC10	16DEC10	14FEB11	14FEB11	40
..D224	30	30	2	0	PR	MassDOT Review: Project Web Site	28DEC10	26JAN11	16JAN11	14FEB11	19
..G112	30	30	2	0	PR	MassDOT Review: Baselline Schedule	2NOV10	1DEC10	16JAN11	14FEB11	75
..G116	30	30	2	0	PR	MassDOT Review: Construction Health & Safety Plan	26OCT10	24NOV10	16JAN11	14FEB11	82
..G122	30	30	2	0	PR	MassDOT Review: Project Management Plan	27OCT10	25NOV10	16JAN11	14FEB11	81
..G132	30	30	2	0	PR	MassDOT Review: Monthly Cash Flow Projection	17NOV10	16DEC10	16JAN11	14FEB11	60
..M1008	10	10	1	0	SU	Mobilize SPMT Equipment/Tools	15MAR11	28MAR11	7JUN11	20JUN11	59
..M1010	* 3	3	1	0	SU SS	5 Set-up/Install Environmental Controls	22FEB11	24FEB11	7MAR11	9MAR11	9
..M1052	* 5	5	1	0	SU SS	0 Construct Cedar St NE HMA Sidewalk	14FEB11	18FEB11	21MAR11	25MAR11	24
..P230	* 5	5	1	0	SU SS	0 Procure Shoring Materials	14FEB11	18FEB11	7MAR11	11MAR11	14
..P234	* 20	20	1	0	SU SS	0 Submit: Traffic Signal Materials	14FEB11	14MAR11	1APR11	28APR11	33
..P244	* 10	10	1	0	SU SS	0 Submit: Concrete Design Mix	14FEB11	28FEB11	7MAR11	18MAR11	14
..P248	* 10	10	1	0	SU SS	0 Submit: HMA Design Mix	14FEB11	28FEB11	2JUN11	15JUN11	76
..P252	* 20	20	1	0	SU	Submit: Guard Rail Shop Dwgs	1MAR11	28MAR11	5MAY11	2JUN11	47
..P258	* 20	20	1	0	SU	Submit: Striping Materials	1MAR11	28MAR11	8JUN11	5JUL11	70
..P266	* 1	1	1	0	SU	Tag Trees @ Nursey	1MAR11	1MAR11	12JUL11	12JUL11	94
..P272	* 10	10	1	0	SU	Submit: Rebar Shop Dwgs for Wing Walls	1MAR11	14MAR11	11MAY11	24MAY11	51
..P282	* 12	12	1	0	SU SS	1 Submit: Deck/Sidewalk/Barrier Rebar Shop Dwgs	15FEB11	3MAR11	16FEB11	4MAR11	1
..P304	* 10	10	1	0	SU SS	0 Submit: Bridge Deck Waterproofing	14FEB11	28FEB11	1JUN11	14JUN11	75

REPORT DATE 8FEB11 RUN NO. 324
14:18

START DATE 21JUL10 FIN DATE 31AUG11*

SR-22

DATA DATE 21JUL10 PAGE NO. 6

ACTIVITY ID	ORIG DUR	REM DUR	CAL	%	CODE	ACTIVITY DESCRIPTION	EARLY START	EARLY FINISH	LATE START	LATE FINISH	TOTAL FLOAT
M1002	2	2	1	0	JFW	Grade & Prep Area for Bridge Frame	25FEB11	28FEB11	10MAR11	11MAR11	9
..D214	1	1	1	0	PR FS	5 MassDOT Submit NPDES - Notice of Intent to EPA	14FEB11	14FEB11	2MAR11	2MAR11	11
..M1010	* 3	3	1	0	PR	Set-up/Install Environmental Controls	22FEB11	24FEB11	7MAR11	9MAR11	9
..M1020	* 10	10	1	0	SU	Construct Shoring for Bridge Frame	1MAR11	14MAR11	14MAR11	25MAR11	9
M1008	10	10	1	0	RIGG	Mobilize SPMT Equipment/Tools	15MAR11	28MAR11	7JUN11	20JUN11	59
..D260	* 20	20	1	0	PR	Submit: SPMT/Bridge Installation Plan	14FEB11	14MAR11	3MAY11	31MAY11	55
..M1000	10	10	1	0	PR	Mobilize Job Trailers @ Site	14FEB11	28FEB11	15FEB11	1MAR11	1
..M9000	0	0	1	0	SU FF	0 Incentive Milestone #1 (June 20, 2011)		20JUN11		20JUN11*	0
..N2000	4	4	3	0	SU	WEEKEND CLOSURE/DETOUR ROUTE 9 (SEE HOURLY CPM)	1JUL11*	4JUL11	1JUL11	4JUL11	0
M1010	3	3	1	0	JFW	Set-up/Install Environmental Controls	22FEB11	24FEB11	7MAR11	9MAR11	9
..D204	1	1	1	0	PR FS	5 JFW Submit NPDES - Notice of Intent to EPA	14JAN11	14JAN11	25FEB11	25FEB11	29
..D280	15	15	1	0	PR	Submit: SWPPP	22DEC10	13JAN11	10JAN11	28JAN11	11
..M1000	* 10	10	1	0	PR SS	5 Mobilize Job Trailers @ Site	14FEB11	28FEB11	15FEB11	1MAR11	1
..M1002	* 2	2	1	0	SU	Grade & Prep Area for Bridge Frame	25FEB11	28FEB11	10MAR11	11MAR11	9
..M1020	10	10	1	0	SU	Construct Shoring for Bridge Frame	1MAR11	14MAR11	14MAR11	25MAR11	9
..M1030	* 2	2	1	0	SU	Clear & Grub S of Bridge, Wing Walls	25FEB11	28FEB11	22MAR11	23MAR11	17
..M1040	2	2	1	0	SU	Strip & Stockpile Soil in Work Zones	1MAR11	2MAR11	24MAR11	25MAR11	17
..M1050	4	4	1	0	SU	Install Temporary Fencing	3MAR11	8MAR11	28MAR11	31MAR11	17
M1012	1	1	2	0	MDOT	MassDOT Obtain Temp Easements @ Cedar/Worc Sts	13FEB11	13FEB11	9JUN11	9JUN11	116
..D111	* 30	30	2	0	PR	MassDOT Review: 100% Design PS&E (Highway)	14JAN11	12FEB11	16JAN11	14FEB11	2
..N1000	6	6	2	0	SU FS	10 Exc/Rem Extg Sidewalks/Curb/G Rail Cedar/Worc St	20JUN11	25JUN11	20JUN11	25JUN11	0
M1020	10	10	1	0	JFW	Construct Shoring for Bridge Frame	1MAR11	14MAR11	14MAR11	25MAR11	9
..M1002	* 2	2	1	0	PR	Grade & Prep Area for Bridge Frame	25FEB11	28FEB11	10MAR11	11MAR11	9
..M1010	3	3	1	0	PR	Set-up/Install Environmental Controls	22FEB11	24FEB11	7MAR11	9MAR11	9
..P230	5	5	1	0	PR	Procure Shoring Materials	14FEB11	18FEB11	7MAR11	11MAR11	14
..M1060	5	5	1	0	SU	Erect Structural Steel & SIP Decking	28MAR11	1APR11	28MAR11	1APR11	0
M1030	2	2	1	0	JFW	Clear & Grub S of Bridge, Wing Walls	25FEB11	28FEB11	22MAR11	23MAR11	17
..M1010	* 3	3	1	0	PR	Set-up/Install Environmental Controls	22FEB11	24FEB11	7MAR11	9MAR11	9
..M1040	* 2	2	1	0	SU	Strip & Stockpile Soil in Work Zones	1MAR11	2MAR11	24MAR11	25MAR11	17
M1040	2	2	1	0	JFW	Strip & Stockpile Soil in Work Zones	1MAR11	2MAR11	24MAR11	25MAR11	17
..M1010	3	3	1	0	PR	Set-up/Install Environmental Controls	22FEB11	24FEB11	7MAR11	9MAR11	9
..M1030	* 2	2	1	0	PR	Clear & Grub S of Bridge, Wing Walls	25FEB11	28FEB11	22MAR11	23MAR11	17
..M1050	* 4	4	1	0	SU	Install Temporary Fencing	3MAR11	8MAR11	28MAR11	31MAR11	17
..N1000	6	6	2	0	SU	Exc/Rem Extg Sidewalks/Curb/G Rail Cedar/Worc St	20JUN11	25JUN11	20JUN11	25JUN11	0
M1050	4	4	1	0	MCCOY	Install Temporary Fencing	3MAR11	8MAR11	28MAR11	31MAR11	17
..M1010	3	3	1	0	PR	Set-up/Install Environmental Controls	22FEB11	24FEB11	7MAR11	9MAR11	9
..M1040	* 2	2	1	0	PR	Strip & Stockpile Soil in Work Zones	1MAR11	2MAR11	24MAR11	25MAR11	17
..M1052	5	5	1	0	PR	Construct Cedar St NE HMA Sidewalk	14FEB11	18FEB11	21MAR11	25MAR11	24
..M1060	5	5	1	0	SU SS	0 Erect Structural Steel & SIP Decking	28MAR11	1APR11	28MAR11	1APR11	0
M1052	5	5	1	0	JFW	Construct Cedar St NE HMA Sidewalk	14FEB11	18FEB11	21MAR11	25MAR11	24
..D212	* 30	30	2	0	PR	MassDOT Review:: Traffic Management Plans	14JAN11	12FEB11	19FEB11	20MAR11	36
..M1000	* 10	10	1	0	PR SS	0 Mobilize Job Trailers @ Site	14FEB11	28FEB11	15FEB11	1MAR11	1
..M1050	4	4	1	0	SU	Install Temporary Fencing	3MAR11	8MAR11	28MAR11	31MAR11	17

REPORT DATE 8FEB11 RUN NO. 324
14:18

START DATE 21JUL10 FIN DATE 31AUG11*

SR-22

DATA DATE 21JUL10 PAGE NO. 7

ACTIVITY ID	ORIG DUR	REM DUR	CAL	%	CODE	ACTIVITY DESCRIPTION	EARLY START	EARLY FINISH	LATE START	LATE FINISH	TOTAL FLOAT
M1060	5	5	1	0	SAUGU	Erect Structural Steel & SIP Decking	28MAR11	1APR11	28MAR11	1APR11	0
..M1020	10	10	1	0	PR	Construct Shoring for Bridge Frame	1MAR11	14MAR11	14MAR11	25MAR11	9
..M1050	4	4	1	0	PR SS	0 Install Temporary Fencing	3MAR11	8MAR11	28MAR11	31MAR11	17
..P204	* 30	30	1	0	PR	Fabricate/Deliver: Structural Steel	11FEB11	25MAR11	11FEB11	25MAR11	0
..P242	30	30	2	0	PR	MassDOT R&A: Structural Steel Erection Plan	21JAN11	19FEB11	26FEB11	27MAR11	36
..P296	20	20	1	0	PR FF	2 Fabricate/Deliver: SIP Decking	28JAN11	25FEB11	3MAR11	30MAR11	23
..M1070	* 20	20	1	0	SU	FRP Bridge Deck	4APR11	29APR11	4APR11	29APR11	0
M1070	20	20	1	0	R/W	FRP Bridge Deck	4APR11	29APR11	4APR11	29APR11	0
..M1060	* 5	5	1	0	PR	Erect Structural Steel & SIP Decking	28MAR11	1APR11	28MAR11	1APR11	0
..P246	10	10	1	0	PR	JFWBD R&A Concrete Design Mix	1MAR11	14MAR11	21MAR11	1APR11	14
..P286	10	10	1	0	PR	Fabricate/Deliver: Deck Rebar	18MAR11	31MAR11	21MAR11	1APR11	1
..M1072	* 10	10	2	0	SU	C&S Bridge Deck	30APR11	9MAY11	30APR11	9MAY11	0
..M1074	* 28	28	2	0	SU	28 Day Full Cure Prior to Move	30APR11	27MAY11	24MAY11	20JUN11	24
M1072	10	10	2	0	JFW	C&S Bridge Deck	30APR11	9MAY11	30APR11	9MAY11	0
..M1070	* 20	20	1	0	PR	FRP Bridge Deck	4APR11	29APR11	4APR11	29APR11	0
..M1090	* 5	5	1	0	SU	FRP Bridge Sidewalks	10MAY11	16MAY11	10MAY11	16MAY11	0
M1074	28	28	2	0	JFW	28 Day Full Cure Prior to Move	30APR11	27MAY11	24MAY11	20JUN11	24
..M1070	* 20	20	1	0	PR	FRP Bridge Deck	4APR11	29APR11	4APR11	29APR11	0
..M9000	0	0	1	0	SU FF	0 Incentive Milestone #1 (June 20, 2011)		20JUN11		20JUN11*	0
M1080	18	18	1	0	R/W	FRP Bridge Barriers	18MAY11	13JUN11	18MAY11	13JUN11	0
..M1092	* 3	3	2	0	PR SS	1 C&S Bridge Sidewalks	17MAY11	19MAY11	17MAY11	19MAY11	0
..P246	10	10	1	0	PR	JFWBD R&A Concrete Design Mix	1MAR11	14MAR11	21MAR11	1APR11	14
..M1082	* 7	7	2	0	SU	C&S Bridge Barriers	14JUN11	20JUN11	14JUN11	20JUN11	0
M1082	7	7	2	0	JFW	C&S Bridge Barriers	14JUN11	20JUN11	14JUN11	20JUN11	0
..M1080	* 18	18	1	0	PR	FRP Bridge Barriers	18MAY11	13JUN11	18MAY11	13JUN11	0
..M1102	* 2	2	1	0	SU	Apply Bridge Deck Waterproofing	21JUN11	22JUN11	29JUN11	30JUN11	6
..M9000	* 0	0	1	0	SU FF	0 Incentive Milestone #1 (June 20, 2011)		20JUN11		20JUN11*	0
M1090	5	5	1	0	R/W	FRP Bridge Sidewalks	10MAY11	16MAY11	10MAY11	16MAY11	0
..M1072	* 10	10	2	0	PR	C&S Bridge Deck	30APR11	9MAY11	30APR11	9MAY11	0
..P246	10	10	1	0	PR	JFWBD R&A Concrete Design Mix	1MAR11	14MAR11	21MAR11	1APR11	14
..M1092	* 3	3	2	0	SU	C&S Bridge Sidewalks	17MAY11	19MAY11	17MAY11	19MAY11	0
M1092	3	3	2	0	JFW	C&S Bridge Sidewalks	17MAY11	19MAY11	17MAY11	19MAY11	0
..M1090	* 5	5	1	0	PR	FRP Bridge Sidewalks	10MAY11	16MAY11	10MAY11	16MAY11	0
..M1080	* 18	18	1	0	SU SS	1 FRP Bridge Barriers	18MAY11	13JUN11	18MAY11	13JUN11	0
M1102	2	2	1	0	WTRP	Apply Bridge Deck Waterproofing	21JUN11	22JUN11	29JUN11	30JUN11	6
..M1082	* 7	7	2	0	PR	C&S Bridge Barriers	14JUN11	20JUN11	14JUN11	20JUN11	0
..P314	10	10	1	0	PR	JFWBD Review: Bridge Deck Waterproofing	1MAR11	14MAR11	15JUN11	28JUN11	75
..N2000	4	4	3	0	SU	WEEKEND CLOSURE/DETOUR ROUTE 9 (SEE HOURLY CPM)	1JUL11*	4JUL11	1JUL11	4JUL11	0
M9000	0	0	1	0		Incentive Milestone #1 (June 20, 2011)		20JUN11		20JUN11*	0
..M1008	10	10	1	0	PR FF	0 Mobilize SPMT Equipment/Tools	15MAR11	28MAR11	7JUN11	20JUN11	59

REPORT DATE 8FEB11 RUN NO. 324

START DATE 21JUL10 FIN DATE 31AUG11*

14:18

SR-22

DATA DATE 21JUL10 PAGE NO. 8

ACTIVITY ID	ORIG DUR	REM DUR	CAL	%	CODE	ACTIVITY DESCRIPTION	EARLY START	EARLY FINISH	LATE START	LATE FINISH	TOTAL FLOAT
..M1074	28	28	2	0	PR FF	0 28 Day Full Cure Prior to Move	30APR11	27MAY11	24MAY11	20JUN11	24
..M1082	*	7	7	2	0 PR FF	0 C&S Bridge Barriers	14JUN11	20JUN11	14JUN11	20JUN11	0
..P106	5	5	1	0	PR FF	0 Deliver: Precast Abutment Caps	11MAY11	17MAY11	14JUN11	20JUN11	23
..N1000	*	6	6	2	0 SU FS	-1 Exc/Rem Extg Sidewalks/Curb/G Rail Cedar/Worc St	20JUN11	25JUN11	20JUN11	25JUN11	0
..N2000	4	4	3	0	SU	WEEKEND CLOSURE/DETOUR ROUTE 9 (SEE HOURLY CPM)	1JUL11*	4JUL11	1JUL11	4JUL11	0
N1000	6	6	2	0	DOW	Exc/Rem Extg Sidewalks/Curb/G Rail Cedar/Worc St	20JUN11	25JUN11	20JUN11	25JUN11	0
..M1012	1	1	2	0	PR FS	10 MassDOT Obtain Temp Easements @ Cedar/Worc Sts	13FEB11	13FEB11	9JUN11	9JUN11	116
..M1040	2	2	1	0	PR	Strip & Stockpile Soil in Work Zones	1MAR11	2MAR11	24MAR11	25MAR11	17
..M9000	*	0	0	1	0 PR FS	-1 Incentive Milestone #1 (June 20, 2011)	20JUN11	20JUN11	20JUN11*	20JUN11*	0
..N1002	*	5	5	2	0 SU SS	2 Backfill & Grade Cedar/Worc St	22JUN11	26JUN11	22JUN11	26JUN11	0
..N1040	*	1	1	2	0 SU SS	0 Temporary Shoring of Utility Poles	20JUN11	20JUN11	20JUN11	20JUN11	0
N1002	5	5	2	0	DOW	Backfill & Grade Cedar/Worc St	22JUN11	26JUN11	22JUN11	26JUN11	0
..N1000	*	6	6	2	0 PR SS	2 Exc/Rem Extg Sidewalks/Curb/G Rail Cedar/Worc St	20JUN11	25JUN11	20JUN11	25JUN11	0
..N1030	*	1	1	2	0 SU	Cold Plane Cedar Street Interface w/Extg	27JUN11	27JUN11	29JUN11	29JUN11	2
..N1050	*	3	3	2	0 SU FF	0 Inst Traffic Signal Bases, Conduit, HHS, Cables	24JUN11	26JUN11	27JUN11	29JUN11	3
..N1060	*	3	3	2	0 SU	Reset Curb @ Cedar/Worcester Sts	27JUN11	29JUN11	27JUN11	29JUN11	0
..N1080	*	2	2	2	0 SU FF	0 Adjust/Remodel Utility Structures Cedar/Worc St	25JUN11	26JUN11	28JUN11	29JUN11	3
..N1090	1	1	2	0	SU	Place Bit Binder Course Cedar/Worc Sts	30JUN11	30JUN11	30JUN11	30JUN11	0
N1010	2	2	2	0	JFW	Exc Pilasters & End Posts Cedar/Worc Sts	21JUN11	22JUN11	21JUN11	22JUN11	0
..N1040	*	1	1	2	0 PR	Temporary Shoring of Utility Poles	20JUN11	20JUN11	20JUN11	20JUN11	0
..P276	8	8	1	0	PR	Fabricate/Deliver: Rebar for Wing Walls	29MAR11	7APR11	9JUN11	20JUN11	51
..N1014	*	10	10	2	0 SU	FRP Barriers & End Posts Cedar/Worc Sts	23JUN11	2JUL11	23JUN11	2JUL11	0
N1014	10	10	2	0	R/W	FRP Barriers & End Posts Cedar/Worc Sts	23JUN11	2JUL11	23JUN11	2JUL11	0
..N1010	*	2	2	2	0 PR	Exc Pilasters & End Posts Cedar/Worc Sts	21JUN11	22JUN11	21JUN11	22JUN11	0
..P276	8	8	1	0	PR	Fabricate/Deliver: Rebar for Wing Walls	29MAR11	7APR11	9JUN11	20JUN11	51
..N1016	*	5	5	2	0 SU	C&S Barriers & End Posts Cedar/Worc Sts	3JUL11	7JUL11	3JUL11	7JUL11	0
N1016	5	5	2	0	JFW	C&S Barriers & End Posts Cedar/Worc Sts	3JUL11	7JUL11	3JUL11	7JUL11	0
..N1014	*	10	10	2	0 PR	FRP Barriers & End Posts Cedar/Worc Sts	23JUN11	2JUL11	23JUN11	2JUL11	0
..N3052	*	7	7	2	0 SU	FRP Pilasters Cedar/Worc Sts	8JUL11	14JUL11	8JUL11	14JUL11	0
..N3070	*	2	2	2	0 SU	Install Type II Protective Screen Fencing	8JUL11	9JUL11	19JUL11	20JUL11	11
N1022	3	3	2	0	JFW	Rte 9 Median Modifications	21JUN11	23JUN11	21JUN11	23JUN11	0
..N1040	*	1	1	2	0 PR	Temporary Shoring of Utility Poles	20JUN11	20JUN11	20JUN11	20JUN11	0
..N1082	*	1	1	2	0 SU	Install HMA Sidewalk Rte 9	24JUN11	24JUN11	24JUN11	24JUN11	0
N1024	3	3	2	0	JFW	Detour Work & Pedestrian Walkways	25JUN11	27JUN11	25JUN11	27JUN11	0
..N1082	*	1	1	2	0 PR	Install HMA Sidewalk Rte 9	24JUN11	24JUN11	24JUN11	24JUN11	0
..N1026	*	3	3	2	0 SU	Detour Work & Widen Ramps to 2 Lanes	28JUN11	30JUN11	28JUN11	30JUN11	0
N1026	3	3	2	0	JFW	Detour Work & Widen Ramps to 2 Lanes	28JUN11	30JUN11	28JUN11	30JUN11	0
..N1024	*	3	3	2	0 PR	Detour Work & Pedestrian Walkways	25JUN11	27JUN11	25JUN11	27JUN11	0
..N2000	*	4	4	3	0 SU	WEEKEND CLOSURE/DETOUR ROUTE 9 (SEE HOURLY CPM)	1JUL11*	4JUL11	1JUL11	4JUL11	0
N1030	1	1	2	0	PAVE	Cold Plane Cedar Street Interface w/Extg	27JUN11	27JUN11	29JUN11	29JUN11	2
..N1002	*	5	5	2	0 PR	Backfill & Grade Cedar/Worc St	22JUN11	26JUN11	22JUN11	26JUN11	0

REPORT DATE 8FEB11 RUN NO. 324
14:18

START DATE 21JUL10 FIN DATE 31AUG11*

SR-22

DATA DATE 21JUL10 PAGE NO. 9

ACTIVITY ID	ORIG DUR	REM DUR	CAL	%	CODE	ACTIVITY DESCRIPTION	EARLY START	EARLY FINISH	LATE START	LATE FINISH	TOTAL FLOAT	
..N1090	1	1	2	0	SU	Place Bit Binder Course Cedar/Worc Sts	30JUN11	30JUN11	30JUN11	30JUN11	0	
N1040	1	1	2	0	JFW	Temporary Shoring of Utility Poles	20JUN11	20JUN11	20JUN11	20JUN11	0	
..N1000	*	6	6	2	0	PR SS 0	Exc/Rem Extg Sidewalks/Curb/G Rail Cedar/Worc St	20JUN11	25JUN11	20JUN11	25JUN11	0
..N1010	*	2	2	2	0	SU	Exc Pilasters & End Posts Cedar/Worc Sts	21JUN11	22JUN11	21JUN11	22JUN11	0
..N1022	*	3	3	2	0	SU	Rte 9 Median Modifications	21JUN11	23JUN11	21JUN11	23JUN11	0
N1050	3	3	2	0	TRAFF	Inst Traffic Signal Bases, Conduit, HHs, Cables	24JUN11	26JUN11	27JUN11	29JUN11	3	
..N1002	*	5	5	2	0	PR FF 0	Backfill & Grade Cedar/Worc St	22JUN11	26JUN11	22JUN11	26JUN11	0
..P238	30	30	1	0	PR	Procure: Traffic Signal Materials	29MAR11	9MAY11	13MAY11	24JUN11	33	
..N1060	3	3	2	0	SU SS 0	Reset Curb @ Cedar/Worcester Sts	27JUN11	29JUN11	27JUN11	29JUN11	0	
..N1090	1	1	2	0	SU	Place Bit Binder Course Cedar/Worc Sts	30JUN11	30JUN11	30JUN11	30JUN11	0	
N1060	3	3	2	0	JFW	Reset Curb @ Cedar/Worcester Sts	27JUN11	29JUN11	27JUN11	29JUN11	0	
..N1002	*	5	5	2	0	PR	Backfill & Grade Cedar/Worc St	22JUN11	26JUN11	22JUN11	26JUN11	0
..N1050	3	3	2	0	PR SS 0	Inst Traffic Signal Bases, Conduit, HHs, Cables	24JUN11	26JUN11	27JUN11	29JUN11	3	
..N1070	*	8	8	2	0	SU SS 3	FRP Concrete Sidewalks & WC Ramps Cedar/Worc Sts	30JUN11	7JUL11	10JUL11	17JUL11	10
..N1090	*	1	1	2	0	SU	Place Bit Binder Course Cedar/Worc Sts	30JUN11	30JUN11	30JUN11	30JUN11	0
N1070	8	8	2	0	JFW	FRP Concrete Sidewalks & WC Ramps Cedar/Worc Sts	30JUN11	7JUL11	10JUL11	17JUL11	10	
..N1060	*	3	3	2	0	PR SS 3	Reset Curb @ Cedar/Worcester Sts	27JUN11	29JUN11	27JUN11	29JUN11	0
..N3032	3	3	2	0	SU	Fine Grading/Loam/Seed & Landscaping	18JUL11	20JUL11	18JUL11	20JUL11	0	
N1080	2	2	2	0	DOW	Adjust/Remodel Utility Structures Cedar/Worc St	25JUN11	26JUN11	28JUN11	29JUN11	3	
..N1002	*	5	5	2	0	PR FF 0	Backfill & Grade Cedar/Worc St	22JUN11	26JUN11	22JUN11	26JUN11	0
..N1090	1	1	2	0	SU	Place Bit Binder Course Cedar/Worc Sts	30JUN11	30JUN11	30JUN11	30JUN11	0	
N1082	1	1	2	0	JFW	Install HMA Sidewalk Rte 9	24JUN11	24JUN11	24JUN11	24JUN11	0	
..N1022	*	3	3	2	0	PR	Rte 9 Median Modifications	21JUN11	23JUN11	21JUN11	23JUN11	0
..N1024	*	3	3	2	0	SU	Detour Work & Pedestrian Walkways	25JUN11	27JUN11	25JUN11	27JUN11	0
N1090	1	1	2	0	PAVE	Place Bit Binder Course Cedar/Worc Sts	30JUN11	30JUN11	30JUN11	30JUN11	0	
..N1002	5	5	2	0	PR	Backfill & Grade Cedar/Worc St	22JUN11	26JUN11	22JUN11	26JUN11	0	
..N1030	1	1	2	0	PR	Cold Plane Cedar Street Interface w/Extg	27JUN11	27JUN11	29JUN11	29JUN11	2	
..N1050	3	3	2	0	PR	Inst Traffic Signal Bases, Conduit, HHs, Cables	24JUN11	26JUN11	27JUN11	29JUN11	3	
..N1060	*	3	3	2	0	PR	Reset Curb @ Cedar/Worcester Sts	27JUN11	29JUN11	27JUN11	29JUN11	0
..N1080	2	2	2	0	PR	Adjust/Remodel Utility Structures Cedar/Worc St	25JUN11	26JUN11	28JUN11	29JUN11	3	
..P250	10	10	1	0	PR	JFWBD R&A HMA Design Mix	1MAR11	14MAR11	16JUN11	29JUN11	76	
..N2000	*	4	4	3	0	SU	WEEKEND CLOSURE/DETOUR ROUTE 9 (SEE HOURLY CPM)	1JUL11*	4JUL11	1JUL11	4JUL11	0
N2000	4	4	3	0		WEEKEND CLOSURE/DETOUR ROUTE 9 (SEE HOURLY CPM)	1JUL11*	4JUL11	1JUL11	4JUL11	0	
..D252	30	30	2	0	PR	MassDOT Review:: Demolition Plan	15MAR11	13APR11	1JUN11	30JUN11	78	
..D262	30	30	2	0	PR	MassDOT Review: SPMT/Bridge Installation Plan	15MAR11	13APR11	1JUN11	30JUN11	78	
..M1008	10	10	1	0	PR	Mobilize SPMT Equipment/Tools	15MAR11	28MAR11	7JUN11	20JUN11	59	
..M1102	2	2	1	0	PR	Apply Bridge Deck Waterproofing	21JUN11	22JUN11	29JUN11	30JUN11	6	
..M9000	0	0	1	0	PR	Incentive Milestone #1 (June 20, 2011)		20JUN11		20JUN11*	0	
..N1026	*	3	3	2	0	PR	Detour Work & Widen Ramps to 2 Lanes	28JUN11	30JUN11	28JUN11	30JUN11	0
..N1090	*	1	1	2	0	PR	Place Bit Binder Course Cedar/Worc Sts	30JUN11	30JUN11	30JUN11	30JUN11	0
..P106	5	5	1	0	PR	Deliver: Precast Abutment Caps	11MAY11	17MAY11	14JUN11	20JUN11	23	
..P228	40	40	1	0	PR	Fabricate/Deliver: Elastomeric Bearings	22MAR11	16MAY11	5MAY11	30JUN11	32	
..N2050	*	0	0	2	0	SU FF 0	Incentive Milestone #2 (July 4, 2011)		4JUL11		4JUL11*	0

REPORT DATE 8FEB11 RUN NO. 324
14:18

START DATE 21JUL10 FIN DATE 31AUG11*

SR-22

DATA DATE 21JUL10 PAGE NO. 10

ACTIVITY ID	ORIG DUR	REM DUR	CAL	%	CODE	ACTIVITY DESCRIPTION	EARLY START	EARLY FINISH	LATE START	LATE FINISH	TOTAL FLOAT
N2050	0	0	2	0		Incentive Milestone #2 (July 4, 2011)		4JUL11		4JUL11*	0
..N2000	* 4	4	3	0	PR FF	0 WEEKEND CLOSURE/DETOUR ROUTE 9 (SEE HOURLY CPM)	1JUL11*	4JUL11	1JUL11	4JUL11	0
..N3000	* 6	6	2	0	SU	Remove Temp Detours/Pedestrian Walkways Rte 9	5JUL11	10JUL11	9JUL11	14JUL11	4
..N3022	* 5	5	2	0	SU	Remove Temporary Shoring Towers	5JUL11	9JUL11	13JUL11	17JUL11	8
..N3040	* 4	4	2	0	SU	Inst Traffic Signal Mast Arms, Poles & Heads	5JUL11	8JUL11	13JUL11	16JUL11	8
..N3070	2	2	2	0	SU	Install Type II Protective Screen Fencing	8JUL11	9JUL11	19JUL11	20JUL11	11
..P264	* 3	3	1	0	SU	Deliver: Trees	5JUL11	7JUL11	13JUL11	15JUL11	6
N3000	6	6	2	0	JFW	Remove Temp Detours/Pedestrian Walkways Rte 9	5JUL11	10JUL11	9JUL11	14JUL11	4
..N2050	* 0	0	2	0	PR	Incentive Milestone #2 (July 4, 2011)		4JUL11		4JUL11*	0
..N3010	* 6	6	2	0	SU	Re-install Curb/Guardrail Rte 9	11JUL11	16JUL11	15JUL11	20JUL11	4
N3002	0	0	2	0		Incentive Milestone #3 (July 20, 2011)		20JUL11		20JUL11*	0
..N3010	6	6	2	0	PR FF	0 Re-install Curb/Guardrail Rte 9	11JUL11	16JUL11	15JUL11	20JUL11	4
..N3032	* 3	3	2	0	PR FF	0 Fine Grading/Loam/Seed & Landscaping	18JUL11	20JUL11	18JUL11	20JUL11	0
..N3056	2	2	2	0	PR FF	0 Backfill Pilasters Cedar/Worc Sts	18JUL11	19JUL11	18JUL11	19JUL11	0
..N3060	2	2	2	0	PR FF	0 Remove Existing Traffic Signal System	11JUL11	12JUL11	19JUL11	20JUL11	8
..N3070	2	2	2	0	PR FF	0 Install Type II Protective Screen Fencing	8JUL11	9JUL11	19JUL11	20JUL11	11
..N3080	2	2	2	0	PR FF	0 Prep/Inst HMA Driveway & Walkways Cedar/Worc Sts	11JUL11	12JUL11	19JUL11	20JUL11	8
..N3100	1	1	2	0	PR FF	0 Stripe Cedar/Worcester Sts	11JUL11	11JUL11	20JUL11	20JUL11	9
..N4000	* 30	30	2	0	SU	Contract Punchlist/As-Built/Closeout	21JUL11	19AUG11	22JUL11	20AUG11	1
N3010	6	6	2	0	JFW	Re-install Curb/Guardrail Rte 9	11JUL11	16JUL11	15JUL11	20JUL11	4
..N3000	* 6	6	2	0	PR	Remove Temp Detours/Pedestrian Walkways Rte 9	5JUL11	10JUL11	9JUL11	14JUL11	4
..P256	20	20	1	0	PR	Fabricate/Deliver Guardrail	12APR11	9MAY11	17JUN11	14JUL11	47
..N3002	0	0	2	0	SU FF	0 Incentive Milestone #3 (July 20, 2011)		20JUL11		20JUL11*	0
N3022	5	5	2	0	JFW	Remove Temporary Shoring Towers	5JUL11	9JUL11	13JUL11	17JUL11	8
..N2050	* 0	0	2	0	PR	Incentive Milestone #2 (July 4, 2011)		4JUL11		4JUL11*	0
..N3032	3	3	2	0	SU	Fine Grading/Loam/Seed & Landscaping	18JUL11	20JUL11	18JUL11	20JUL11	0
N3032	3	3	2	0	LAND	Fine Grading/Loam/Seed & Landscaping	18JUL11	20JUL11	18JUL11	20JUL11	0
..N1070	8	8	2	0	PR	FRP Concrete Sidewalks & WC Ramps Cedar/Worc Sts	30JUN11	7JUL11	10JUL11	17JUL11	10
..N3022	5	5	2	0	PR	Remove Temporary Shoring Towers	5JUL11	9JUL11	13JUL11	17JUL11	8
..N3056	* 2	2	2	0	PR FF	1 Backfill Pilasters Cedar/Worc Sts	18JUL11	19JUL11	18JUL11	19JUL11	0
..P264	3	3	1	0	PR	Deliver: Trees	5JUL11	7JUL11	13JUL11	15JUL11	6
..N3002	* 0	0	2	0	SU FF	0 Incentive Milestone #3 (July 20, 2011)		20JUL11		20JUL11*	0
N3040	4	4	2	0	TRAFF	Inst Traffic Signal Mast Arms, Poles & Heads	5JUL11	8JUL11	13JUL11	16JUL11	8
..N2050	* 0	0	2	0	PR	Incentive Milestone #2 (July 4, 2011)		4JUL11		4JUL11*	0
..N3050	* 3	3	2	0	SU	Wire/Activate Traffic Signal System	9JUL11	11JUL11	17JUL11	19JUL11	8
..N3090	* 2	2	2	0	SU	Pave Top Course Cedar/Worcester Sts	9JUL11	10JUL11	17JUL11	18JUL11	8
N3050	3	3	2	0	TRAFF	Wire/Activate Traffic Signal System	9JUL11	11JUL11	17JUL11	19JUL11	8
..N3040	* 4	4	2	0	PR	Inst Traffic Signal Mast Arms, Poles & Heads	5JUL11	8JUL11	13JUL11	16JUL11	8
..N3060	* 2	2	2	0	SU FF	1 Remove Existing Traffic Signal System	11JUL11	12JUL11	19JUL11	20JUL11	8
N3052	7	7	2	0	R/W	FRP Pilasters Cedar/Worc Sts	8JUL11	14JUL11	8JUL11	14JUL11	0
..N1016	* 5	5	2	0	PR	C&S Barriers & End Posts Cedar/Worc Sts	3JUL11	7JUL11	3JUL11	7JUL11	0
..P276	8	8	1	0	PR	Fabricate/Deliver: Rebar for Wing Walls	29MAR11	7APR11	9JUN11	20JUN11	51
..N3054	* 5	5	2	0	SU	C&S Pilasters Cedar/Worc Sts	15JUL11	19JUL11	15JUL11	19JUL11	0

REPORT DATE 8FEB11 RUN NO. 324
 14:18
 SR-22

START DATE 21JUL10 FIN DATE 31AUG11*
 DATA DATE 21JUL10 PAGE NO. 11

ACTIVITY ID	ORIG DUR	REM DUR	CAL	%	CODE	ACTIVITY DESCRIPTION	EARLY START	EARLY FINISH	LATE START	LATE FINISH	TOTAL FLOAT
N3054	5	5	2	0	JFW	C&S Pilasters Cedar/Worc Sts	15JUL11	19JUL11	15JUL11	19JUL11	0
..N3052	* 7	7	2	0	PR	FRP Pilasters Cedar/Worc Sts	8JUL11	14JUL11	8JUL11	14JUL11	0
..N3056	* 2	2	2	0	SU SS 3	Backfill Pilasters Cedar/Worc Sts	18JUL11	19JUL11	18JUL11	19JUL11	0
N3056	2	2	2	0	JFW	Backfill Pilasters Cedar/Worc Sts	18JUL11	19JUL11	18JUL11	19JUL11	0
..N3054	* 5	5	2	0	PR SS 3	C&S Pilasters Cedar/Worc Sts	15JUL11	19JUL11	15JUL11	19JUL11	0
..N3002	0	0	2	0	SU FF 0	Incentive Milestone #3 (July 20, 2011)		20JUL11		20JUL11*	0
..N3032	* 3	3	2	0	SU FF 1	Fine Grading/Loam/Seed & Landscaping	18JUL11	20JUL11	18JUL11	20JUL11	0
N3060	2	2	2	0		TRAFF Remove Existing Traffic Signal System	11JUL11	12JUL11	19JUL11	20JUL11	8
..N3050	* 3	3	2	0	PR FF 1	Wire/Activate Traffic Signal System	9JUL11	11JUL11	17JUL11	19JUL11	8
..N3002	0	0	2	0	SU FF 0	Incentive Milestone #3 (July 20, 2011)		20JUL11		20JUL11*	0
N3070	2	2	2	0		MCCOY Install Type II Protective Screen Fencing	8JUL11	9JUL11	19JUL11	20JUL11	11
..N1016	* 5	5	2	0	PR	C&S Barriers & End Posts Cedar/Worc Sts	3JUL11	7JUL11	3JUL11	7JUL11	0
..N2050	0	0	2	0	PR	Incentive Milestone #2 (July 4, 2011)		4JUL11		4JUL11*	0
..N3002	0	0	2	0	SU FF 0	Incentive Milestone #3 (July 20, 2011)		20JUL11		20JUL11*	0
N3080	2	2	2	0	JFW	Prep/Inst HMA Driveway & Walkways Cedar/Worc Sts	11JUL11	12JUL11	19JUL11	20JUL11	8
..N3090	* 2	2	2	0	PR	Pave Top Course Cedar/Worcester Sts	9JUL11	10JUL11	17JUL11	18JUL11	8
..N3002	0	0	2	0	SU FF 0	Incentive Milestone #3 (July 20, 2011)		20JUL11		20JUL11*	0
N3090	2	2	2	0	PAVE	Pave Top Course Cedar/Worcester Sts	9JUL11	10JUL11	17JUL11	18JUL11	8
..N3040	* 4	4	2	0	PR	Inst Traffic Signal Mast Arms, Poles & Heads	5JUL11	8JUL11	13JUL11	16JUL11	8
..N3080	* 2	2	2	0	SU	Prep/Inst HMA Driveway & Walkways Cedar/Worc Sts	11JUL11	12JUL11	19JUL11	20JUL11	8
..N3100	* 1	1	2	0	SU	Stripe Cedar/Worcester Sts	11JUL11	11JUL11	20JUL11	20JUL11	9
N3100	1	1	2	0	MARK	Stripe Cedar/Worcester Sts	11JUL11	11JUL11	20JUL11	20JUL11	9
..N3090	* 2	2	2	0	PR	Pave Top Course Cedar/Worcester Sts	9JUL11	10JUL11	17JUL11	18JUL11	8
..P260	10	10	1	0	PR	JFWBD R&A Striping Materials	29MAR11	11APR11	6JUL11	19JUL11	70
..N3002	0	0	2	0	SU FF 0	Incentive Milestone #3 (July 20, 2011)		20JUL11		20JUL11*	0
N4000	30	30	2	0		Contract Punchlist/As-Built/Closeout	21JUL11	19AUG11	22JUL11	20AUG11	1
..G108	30	30	2	0	PR FF 0	MassDOT Review: Schedule of Values	17NOV10	16DEC10	22JUL11	20AUG11	247
..N3002	* 0	0	2	0	PR	Incentive Milestone #3 (July 20, 2011)		20JUL11		20JUL11*	0
..N4001	* 0	0	2	0	SU FF 0	Incentive Milestone #4 (August 20, 2011)		19AUG11		20AUG11*	1
N4001	0	0	2	0		Incentive Milestone #4 (August 20, 2011)		19AUG11		20AUG11*	1
..N4000	* 30	30	2	0	PR FF 0	Contract Punchlist/As-Built/Closeout	21JUL11	19AUG11	22JUL11	20AUG11	1
P100	20	20	1	0	WILL	Submit: Precast Abutment Caps - Shop Dwgs	30DEC10	27JAN11	2FEB11	2MAR11	23
..D110	* 30	30	2	0	PR SS 0	MassDOT Review: 100% Design PS&E (Bridge)	30DEC10	28JAN11	30DEC10	28JAN11	0
..P102	* 10	10	1	0	SU	JFWBD R&A Precast Abutment Caps- Shop Dwgs	28JAN11	10FEB11	3MAR11	16MAR11	23
P102	10	10	1	0	JFWDB	JFWBD R&A Precast Abutment Caps- Shop Dwgs	28JAN11	10FEB11	3MAR11	16MAR11	23
..P100	* 20	20	1	0	PR	Submit: Precast Abutment Caps - Shop Dwgs	30DEC10	27JAN11	2FEB11	2MAR11	23
..P104	* 40	40	1	0	SU	Fabricate/cast: Precast Abutment Caps	11FEB11	8APR11	17MAR11	11MAY11	23

REPORT DATE 8FEB11 RUN NO. 324
14:18

START DATE 21JUL10 FIN DATE 31AUG11*

SR-22

DATA DATE 21JUL10 PAGE NO. 12

ACTIVITY ID	ORIG DUR	REM DUR	CAL	%	CODE	ACTIVITY DESCRIPTION	EARLY START	EARLY FINISH	LATE START	LATE FINISH	TOTAL FLOAT
P104	40	40	1	0	WILL	Fabricate/cast: Precast Abutment Caps	11FEB11	8APR11	17MAR11	11MAY11	23
..P102	* 10	10	1	0	PR	JFWBD R&A Precast Abutment Caps- Shop Dwgs	28JAN11	10FEB11	3MAR11	16MAR11	23
..P106	* 5	5	1	0	SU FS 22	Deliver: Precast Abutment Caps	11MAY11	17MAY11	14JUN11	20JUN11	23
P106	5	5	1	0	WILL	Deliver: Precast Abutment Caps	11MAY11	17MAY11	14JUN11	20JUN11	23
..P104	* 40	40	1	0	PR FS 22	Fabricate/cast: Precast Abutment Caps	11FEB11	8APR11	17MAR11	11MAY11	23
..M9000	0	0	1	0	SU FF 0	Incentive Milestone #1 (June 20, 2011)		20JUN11		20JUN11*	0
..N2000	4	4	3	0	SU	WEEKEND CLOSURE/DETOUR ROUTE 9 (SEE HOURLY CPM)	1JUL11*	4JUL11	1JUL11	4JUL11	0
P200	20	20	1	0	SAUGU	Submit: Structural Steel Shop Dwgs	30DEC10	27JAN11	30DEC10	27JAN11	0
..D100	38	38	1	0	PR	Submit: 25% Design P&S (Bridge)	3SEP10	27OCT10	6SEP10	28OCT10	1
..D110	* 30	30	2	0	PR SS 0	MassDOT Review: 100% Design PS&E (Bridge)	30DEC10	28JAN11	30DEC10	28JAN11	0
..P202	* 10	10	1	0	SU	JFWBD R&A Structural Steel Shop Dwgs	28JAN11	10FEB11	28JAN11	10FEB11	0
P202	10	10	1	0	JFWDB	JFWBD R&A Structural Steel Shop Dwgs	28JAN11	10FEB11	28JAN11	10FEB11	0
..P200	* 20	20	1	0	PR	Submit: Structural Steel Shop Dwgs	30DEC10	27JAN11	30DEC10	27JAN11	0
..P204	* 30	30	1	0	SU	Fabricate/Deliver: Structural Steel	11FEB11	25MAR11	11FEB11	25MAR11	0
P203	50	50	1	0	SAUGU	Procure Structural Steel Material	5NOV10	19JAN11	1DEC10	10FEB11	16
..D103	* 1	1	1	0	PR	Early Release of Structural Steel	4NOV10	4NOV10	30NOV10	30NOV10	16
..P204	30	30	1	0	SU	Fabricate/Deliver: Structural Steel	11FEB11	25MAR11	11FEB11	25MAR11	0
P204	30	30	1	0	SAUGU	Fabricate/Deliver: Structural Steel	11FEB11	25MAR11	11FEB11	25MAR11	0
..P202	* 10	10	1	0	PR	JFWBD R&A Structural Steel Shop Dwgs	28JAN11	10FEB11	28JAN11	10FEB11	0
..P203	50	50	1	0	PR	Procure Structural Steel Material	5NOV10	19JAN11	1DEC10	10FEB11	16
..M1060	* 5	5	1	0	SU	Erect Structural Steel & SIP Decking	28MAR11	1APR11	28MAR11	1APR11	0
P222	30	30	1	0	DSBRN	Procure Materials for Elastomeric Bearings	7FEB11	21MAR11	24MAR11	4MAY11	32
..P226	* 10	10	1	0	PR	JFWBD R&A Elastomeric Bearings Shop Dwgs	24JAN11	4FEB11	10MAR11	23MAR11	32
..P228	* 40	40	1	0	SU	Fabricate/Deliver: Elastomeric Bearings	22MAR11	16MAY11	5MAY11	30JUN11	32
P224	15	15	1	0	DSBRN	Submit: Elastomeric Bearings Shop Dwgs	3JAN11	21JAN11	16FEB11	9MAR11	32
..D104	* 1	1	1	0	PR	Early Release of Elastomeric Bearings	30DEC10	30DEC10	15FEB11	15FEB11	32
..P226	* 10	10	1	0	SU	JFWBD R&A Elastomeric Bearings Shop Dwgs	24JAN11	4FEB11	10MAR11	23MAR11	32
P226	10	10	1	0	JFWDB	JFWBD R&A Elastomeric Bearings Shop Dwgs	24JAN11	4FEB11	10MAR11	23MAR11	32
..P224	* 15	15	1	0	PR	Submit: Elastomeric Bearings Shop Dwgs	3JAN11	21JAN11	16FEB11	9MAR11	32
..P222	* 30	30	1	0	SU	Procure Materials for Elastomeric Bearings	7FEB11	21MAR11	24MAR11	4MAY11	32
P228	40	40	1	0	DSBRN	Fabricate/Deliver: Elastomeric Bearings	22MAR11	16MAY11	5MAY11	30JUN11	32
..P222	* 30	30	1	0	PR	Procure Materials for Elastomeric Bearings	7FEB11	21MAR11	24MAR11	4MAY11	32
..N2000	4	4	3	0	SU	WEEKEND CLOSURE/DETOUR ROUTE 9 (SEE HOURLY CPM)	1JUL11*	4JUL11	1JUL11	4JUL11	0
P230	5	5	1	0	JFW	Procure Shoring Materials	14FEB11	18FEB11	7MAR11	11MAR11	14
..D292	30	30	2	0	PR	MassDOT Review:: Temp Br Deck Shoring Plan	12JAN11	10FEB11	5FEB11	6MAR11	24
..M1000	* 10	10	1	0	PR SS 0	Mobilize Job Trailers @ Site	14FEB11	28FEB11	15FEB11	1MAR11	1
..M1020	10	10	1	0	SU	Construct Shoring for Bridge Frame	1MAR11	14MAR11	14MAR11	25MAR11	9

REPORT DATE 8FEB11 RUN NO. 324
14:18

START DATE 21JUL10 FIN DATE 31AUG11*

SR-22

DATA DATE 21JUL10 PAGE NO. 13

ACTIVITY ID	ORIG DUR	REM DUR	CAL	%	CODE	ACTIVITY DESCRIPTION	EARLY START	EARLY FINISH	LATE START	LATE FINISH	TOTAL FLOAT
P234	20	20	1	0	TRAFF	Submit: Traffic Signal Materials	14FEB11	14MAR11	1APR11	28APR11	33
..M1000	*	10	10	1	0 PR SS	0 Mobilize Job Trailers @ Site	14FEB11	28FEB11	15FEB11	1MAR11	1
..P236	*	10	10	1	0 SU	JFWBD R&A Traffic Signal Materials	15MAR11	28MAR11	29APR11	12MAY11	33
P236	10	10	1	0	JFWDB	JFWBD R&A Traffic Signal Materials	15MAR11	28MAR11	29APR11	12MAY11	33
..P234	*	20	20	1	0 PR	Submit: Traffic Signal Materials	14FEB11	14MAR11	1APR11	28APR11	33
..P238	*	30	30	1	0 SU	Procure: Traffic Signal Materials	29MAR11	9MAY11	13MAY11	24JUN11	33
P238	30	30	1	0	TRAFF	Procure: Traffic Signal Materials	29MAR11	9MAY11	13MAY11	24JUN11	33
..P236	*	10	10	1	0 PR	JFWBD R&A Traffic Signal Materials	15MAR11	28MAR11	29APR11	12MAY11	33
..N1050		3	3	2	0 SU	Inst Traffic Signal Bases, Conduit, HHS, Cables	24JUN11	26JUN11	27JUN11	29JUN11	3
P240	15	15	1	0	SAUGU	Submit: Structural Steel Erection Plan	30DEC10	20JAN11	4FEB11	25FEB11	25
..D108	*	22	22	1	0 PR	Submit: 100% Design PS&E (Bridge)	29NOV10	29DEC10	29NOV10	29DEC10	0
..P242	*	30	30	2	0 SU	MassDOT R&A: Structural Steel Erection Plan	21JAN11	19FEB11	26FEB11	27MAR11	36
P242	30	30	2	0	MDOT	MassDOT R&A: Structural Steel Erection Plan	21JAN11	19FEB11	26FEB11	27MAR11	36
..P240	*	15	15	1	0 PR	Submit: Structural Steel Erection Plan	30DEC10	20JAN11	4FEB11	25FEB11	25
..M1060		5	5	1	0 SU	Erect Structural Steel & SIP Decking	28MAR11	1APR11	28MAR11	1APR11	0
P244	10	10	1	0	CIP	Submit: Concrete Design Mix	14FEB11	28FEB11	7MAR11	18MAR11	14
..M1000	*	10	10	1	0 PR SS	0 Mobilize Job Trailers @ Site	14FEB11	28FEB11	15FEB11	1MAR11	1
..P246	*	10	10	1	0 SU	JFWBD R&A Concrete Design Mix	1MAR11	14MAR11	21MAR11	1APR11	14
P246	10	10	1	0	JFWDB	JFWBD R&A Concrete Design Mix	1MAR11	14MAR11	21MAR11	1APR11	14
..P244	*	10	10	1	0 PR	Submit: Concrete Design Mix	14FEB11	28FEB11	7MAR11	18MAR11	14
..M1070		20	20	1	0 SU	FRP Bridge Deck	4APR11	29APR11	4APR11	29APR11	0
..M1080		18	18	1	0 SU	FRP Bridge Barriers	18MAY11	13JUN11	18MAY11	13JUN11	0
..M1090		5	5	1	0 SU	FRP Bridge Sidewalks	10MAY11	16MAY11	10MAY11	16MAY11	0
P248	10	10	1	0	PAVE	Submit: HMA Design Mix	14FEB11	28FEB11	2JUN11	15JUN11	76
..M1000	*	10	10	1	0 PR SS	0 Mobilize Job Trailers @ Site	14FEB11	28FEB11	15FEB11	1MAR11	1
..P250	*	10	10	1	0 SU	JFWBD R&A HMA Design Mix	1MAR11	14MAR11	16JUN11	29JUN11	76
P250	10	10	1	0	JFWDB	JFWBD R&A HMA Design Mix	1MAR11	14MAR11	16JUN11	29JUN11	76
..P248	*	10	10	1	0 PR	Submit: HMA Design Mix	14FEB11	28FEB11	2JUN11	15JUN11	76
..N1090		1	1	2	0 SU	Place Bit Binder Course Cedar/Worc Sts	30JUN11	30JUN11	30JUN11	30JUN11	0
P252	20	20	1	0	MCCOY	Submit: Guard Rail Shop Dwgs	1MAR11	28MAR11	5MAY11	2JUN11	47
..M1000	*	10	10	1	0 PR	Mobilize Job Trailers @ Site	14FEB11	28FEB11	15FEB11	1MAR11	1
..P254	*	10	10	1	0 SU	JFWBD R&A Guard Rail Shop Dwgs	29MAR11	11APR11	3JUN11	16JUN11	47
P254	10	10	1	0	JFWDB	JFWBD R&A Guard Rail Shop Dwgs	29MAR11	11APR11	3JUN11	16JUN11	47
..P252	*	20	20	1	0 PR	Submit: Guard Rail Shop Dwgs	1MAR11	28MAR11	5MAY11	2JUN11	47
..P256	*	20	20	1	0 SU	Fabricate/Deliver Guardrail	12APR11	9MAY11	17JUN11	14JUL11	47

REPORT DATE 8FEB11 RUN NO. 324
 14:18
 SR-22

START DATE 21JUL10 FIN DATE 31AUG11*
 DATA DATE 21JUL10 PAGE NO. 14

ACTIVITY ID	ORIG DUR	REM DUR	CAL	%	CODE	ACTIVITY DESCRIPTION	EARLY START	EARLY FINISH	LATE START	LATE FINISH	TOTAL FLOAT
P256	20	20	1	0	MCCOY	Fabricate/Deliver Guardrail	12APR11	9MAY11	17JUN11	14JUL11	47
..P254	* 10	10	1	0	PR	JFWBD R&A Guard Rail Shop Dwgs	29MAR11	11APR11	3JUN11	16JUN11	47
..N3010	6	6	2	0	SU	Re-install Curb/Guardrail Rte 9	11JUL11	16JUL11	15JUL11	20JUL11	4
P258	20	20	1	0	MARK	Submit: Striping Materials	1MAR11	28MAR11	8JUN11	5JUL11	70
..M1000	* 10	10	1	0	PR	Mobilize Job Trailers @ Site	14FEB11	28FEB11	15FEB11	1MAR11	1
..P260	* 10	10	1	0	SU	JFWBD R&A Striping Materials	29MAR11	11APR11	6JUL11	19JUL11	70
P260	10	10	1	0	JFWDB	JFWBD R&A Striping Materials	29MAR11	11APR11	6JUL11	19JUL11	70
..P258	* 20	20	1	0	PR	Submit: Striping Materials	1MAR11	28MAR11	8JUN11	5JUL11	70
..N3100	1	1	2	0	SU	Stripe Cedar/Worcester Sts	11JUL11	11JUL11	20JUL11	20JUL11	9
P264	3	3	1	0	LAND	Deliver: Trees	5JUL11	7JUL11	13JUL11	15JUL11	6
..N2050	* 0	0	2	0	PR	Incentive Milestone #2 (July 4, 2011)		4JUL11		4JUL11*	0
..P266	1	1	1	0	PR	Tag Trees @ Nursey	1MAR11	1MAR11	12JUL11	12JUL11	94
..N3032	3	3	2	0	SU	Fine Grading/Loam/Seed & Landscaping	18JUL11	20JUL11	18JUL11	20JUL11	0
P266	1	1	1	0	LAND	Tag Trees @ Nursey	1MAR11	1MAR11	12JUL11	12JUL11	94
..M1000	* 10	10	1	0	PR	Mobilize Job Trailers @ Site	14FEB11	28FEB11	15FEB11	1MAR11	1
..P264	3	3	1	0	SU	Deliver: Trees	5JUL11	7JUL11	13JUL11	15JUL11	6
P272	10	10	1	0	REGIS	Submit: Rebar Shop Dwgs for Wing Walls	1MAR11	14MAR11	11MAY11	24MAY11	51
..M1000	* 10	10	1	0	PR	Mobilize Job Trailers @ Site	14FEB11	28FEB11	15FEB11	1MAR11	1
..P274	* 10	10	1	0	SU	JFWBD R&A Rebar Shop Dwgs for Wing Walls	15MAR11	28MAR11	25MAY11	8JUN11	51
P274	10	10	1	0	JFWDB	JFWBD R&A Rebar Shop Dwgs for Wing Walls	15MAR11	28MAR11	25MAY11	8JUN11	51
..P272	* 10	10	1	0	PR	Submit: Rebar Shop Dwgs for Wing Walls	1MAR11	14MAR11	11MAY11	24MAY11	51
..P276	* 8	8	1	0	SU	Fabricate/Deliver: Rebar for Wing Walls	29MAR11	7APR11	9JUN11	20JUN11	51
P276	8	8	1	0	REGIS	Fabricate/Deliver: Rebar for Wing Walls	29MAR11	7APR11	9JUN11	20JUN11	51
..P274	* 10	10	1	0	PR	JFWBD R&A Rebar Shop Dwgs for Wing Walls	15MAR11	28MAR11	25MAY11	8JUN11	51
..N1010	2	2	2	0	SU	Exc Pilasters & End Posts Cedar/Worc Sts	21JUN11	22JUN11	21JUN11	22JUN11	0
..N1014	10	10	2	0	SU	FRP Barriers & End Posts Cedar/Worc Sts	23JUN11	2JUL11	23JUN11	2JUL11	0
..N3052	7	7	2	0	SU	FRP Pilasters Cedar/Worc Sts	8JUL11	14JUL11	8JUL11	14JUL11	0
P282	12	12	1	0	REGIS	Submit: Deck/Sidewalk/Barrier Rebar Shop Dwgs	15FEB11	3MAR11	16FEB11	4MAR11	1
..M1000	* 10	10	1	0	PR SS	1 Mobilize Job Trailers @ Site	14FEB11	28FEB11	15FEB11	1MAR11	1
..P284	* 10	10	1	0	SU	JFWBD R&A Deck/Sidewalk/Barrier Rebar Shop Dwgs	4MAR11	17MAR11	7MAR11	18MAR11	1
P284	10	10	1	0	JFWDB	JFWBD R&A Deck/Sidewalk/Barrier Rebar Shop Dwgs	4MAR11	17MAR11	7MAR11	18MAR11	1
..P282	* 12	12	1	0	PR	Submit: Deck/Sidewalk/Barrier Rebar Shop Dwgs	15FEB11	3MAR11	16FEB11	4MAR11	1
..P286	* 10	10	1	0	SU	Fabricate/Deliver: Deck Rebar	18MAR11	31MAR11	21MAR11	1APR11	1
P286	10	10	1	0	REGIS	Fabricate/Deliver: Deck Rebar	18MAR11	31MAR11	21MAR11	1APR11	1
..P284	* 10	10	1	0	PR	JFWBD R&A Deck/Sidewalk/Barrier Rebar Shop Dwgs	4MAR11	17MAR11	7MAR11	18MAR11	1
..M1070	20	20	1	0	SU	FRP Bridge Deck	4APR11	29APR11	4APR11	29APR11	0

REPORT DATE 8FEB11 RUN NO. 324
14:18

START DATE 21JUL10 FIN DATE 31AUG11*

SR-22

DATA DATE 21JUL10 PAGE NO. 15

ACTIVITY ID	ORIG DUR	REM DUR	CAL	%	CODE	ACTIVITY DESCRIPTION	EARLY START	EARLY FINISH	LATE START	LATE FINISH	TOTAL FLOAT
P292	10	10	1	0	BENZ	Submit: SIP Decking Shop Dwgs	30DEC10	13JAN11	2FEB11	15FEB11	23
..D108	*	22	22	1	0 PR	Submit: 100% Design PS&E (Bridge)	29NOV10	29DEC10	29NOV10	29DEC10	0
..P294	*	10	10	1	0 SU	JFWDB Review/Approve: SIP Decking Shop Dwgs	14JAN11	27JAN11	16FEB11	2MAR11	23
P294	10	10	1	0	JFWDB	JFWDB Review/Approve: SIP Decking Shop Dwgs	14JAN11	27JAN11	16FEB11	2MAR11	23
..P292	*	10	10	1	0 PR	Submit: SIP Decking Shop Dwgs	30DEC10	13JAN11	2FEB11	15FEB11	23
..P296	*	20	20	1	0 SU	Fabricate/Deliver: SIP Decking	28JAN11	25FEB11	3MAR11	30MAR11	23
P296	20	20	1	0	BENZ	Fabricate/Deliver: SIP Decking	28JAN11	25FEB11	3MAR11	30MAR11	23
..P294	*	10	10	1	0 PR	JFWDB Review/Approve: SIP Decking Shop Dwgs	14JAN11	27JAN11	16FEB11	2MAR11	23
..M1060	5	5	1	0	SU FF 2	Erect Structural Steel & SIP Decking	28MAR11	1APR11	28MAR11	1APR11	0
P304	10	10	1	0	WTRP	Submit: Bridge Deck Waterproofing	14FEB11	28FEB11	1JUN11	14JUN11	75
..M1000	*	10	10	1	0 PR SS 0	Mobilize Job Trailers @ Site	14FEB11	28FEB11	15FEB11	1MAR11	1
..P314	*	10	10	1	0 SU	JFWDB Review: Bridge Deck Waterproofing	1MAR11	14MAR11	15JUN11	28JUN11	75
P314	10	10	1	0	WTRP	JFWDB Review: Bridge Deck Waterproofing	1MAR11	14MAR11	15JUN11	28JUN11	75
..P304	*	10	10	1	0 PR	Submit: Bridge Deck Waterproofing	14FEB11	28FEB11	1JUN11	14JUN11	75
..M1102	2	2	1	0	SU	Apply Bridge Deck Waterproofing	21JUN11	22JUN11	29JUN11	30JUN11	6

REPORT DATE 10FEB11 RUN NO. 21
16:12

START DATE 1JUL11 FIN DATE 4JUL11*
20:00 21:59
DATA DATE 1JUL11 PAGE NO. 1
20:00

Hourly Schedule Activity Report - Predecessors & Successors

ACTIVITY ID	ORIG DUR	REM DUR	%	CODE	ACTIVITY DESCRIPTION	EARLY START	EARLY FINISH	LATE START	LATE FINISH	TOTAL FLOAT
G100	2	2	0	JFW	Mobilize Crew & Equipment	1JUL11	1JUL11	2JUL11	2JUL11	4
..G102	*	0	0	SU	Close Bridge	1JUL11		2JUL11		4
G102	0	0	0	JFW	Close Bridge	1JUL11		2JUL11		4
..G100	*	2	2	PR	Mobilize Crew & Equipment	1JUL11	1JUL11	2JUL11	2JUL11	4
..G104	*	1	1	SU	Roadway Closure & Demo Prep	1JUL11	1JUL11	2JUL11	2JUL11	4
G104	1	1	0	JFW	Roadway Closure & Demo Prep	1JUL11	1JUL11	2JUL11	2JUL11	4
..G102	*	0	0	PR	Close Bridge	1JUL11		2JUL11		4
..G108	*	4	4	SU SS	0 Cut bearings	1JUL11	2JUL11	2JUL11	2JUL11	5
..G112	*	6	6	SU	Excavation @ abutments	2JUL11	2JUL11	2JUL11	2JUL11	4
..G115	*	12	12	SU	Demo bridge	1JUL11	2JUL11	2JUL11	2JUL11	4
G108	4	4	0	TESTA	Cut bearings	1JUL11	2JUL11	2JUL11	2JUL11	5
..G104	*	1	1	PR SS	0 Roadway Closure & Demo Prep	1JUL11	1JUL11	2JUL11	2JUL11	4
..G115	*	12	12	SU SS	0 Demo bridge	1JUL11	2JUL11	2JUL11	2JUL11	4
G112	6	6	0	JFW	Excavation @ abutments	2JUL11	2JUL11	2JUL11	2JUL11	4
..G104	*	1	1	PR	Roadway Closure & Demo Prep	1JUL11	1JUL11	2JUL11	2JUL11	4
..G115	*	12	12	PR FF	0 Demo bridge	1JUL11	2JUL11	2JUL11	2JUL11	4
..G116	*	8	8	SU	Sawcut abutments	2JUL11	2JUL11	2JUL11	2JUL11	4
G115	12	12	0	TESTA	Demo bridge	1JUL11	2JUL11	2JUL11	2JUL11	4
..G104	*	1	1	PR	Roadway Closure & Demo Prep	1JUL11	1JUL11	2JUL11	2JUL11	4
..G108	*	4	4	PR SS	0 Cut bearings	1JUL11	2JUL11	2JUL11	2JUL11	5
..G112	*	6	6	SU FF	0 Excavation @ abutments	2JUL11	2JUL11	2JUL11	2JUL11	4
..G116	*	8	8	SU	Sawcut abutments	2JUL11	2JUL11	2JUL11	2JUL11	4
G116	8	8	0	TESTA	Sawcut abutments	2JUL11	2JUL11	2JUL11	2JUL11	4
..G112	*	6	6	PR	Excavation @ abutments	2JUL11	2JUL11	2JUL11	2JUL11	4
..G115	*	12	12	PR	Demo bridge	1JUL11	2JUL11	2JUL11	2JUL11	4
..G118	*	4	4	SU SS	6 Loadout - old abutments	2JUL11	2JUL11	2JUL11	3JUL11	4
G118	4	4	0	TESTA	Loadout - old abutments	2JUL11	2JUL11	2JUL11	3JUL11	4
..G116	*	8	8	PR SS	6 Sawcut abutments	2JUL11	2JUL11	2JUL11	2JUL11	4
..G120	*	8	8	SU SS	2 Set - new abutments	2JUL11	3JUL11	2JUL11	3JUL11	4
G120	8	8	0	SAUGU	Set - new abutments	2JUL11	3JUL11	2JUL11	3JUL11	4
..G118	*	4	4	PR SS	2 Loadout - old abutments	2JUL11	2JUL11	2JUL11	3JUL11	4
..G122	*	8	8	SU SS	6 Drill & grout dowels	3JUL11	3JUL11	3JUL11	3JUL11	4
..G124	*	6	6	SU SS	6 Form & grout abutments	3JUL11	3JUL11	3JUL11	3JUL11	6
G122	8	8	0	JFW	Drill & grout dowels	3JUL11	3JUL11	3JUL11	3JUL11	4
..G120	*	8	8	PR SS	6 Set - new abutments	2JUL11	3JUL11	2JUL11	3JUL11	4
..G202	*	8	8	SU	Set - new bridge	3JUL11	3JUL11	3JUL11	3JUL11	4
G124	6	6	0	JFW	Form & grout abutments	3JUL11	3JUL11	3JUL11	3JUL11	6

REPORT DATE 10FEB11 RUN NO. 21
 16:12
 SR-22

START DATE 1JUL11 FIN DATE 4JUL11*
 20:00 21:59
 DATA DATE 1JUL11 PAGE NO. 2
 20:00

ACTIVITY ID	ORIG DUR	REM DUR	%	CODE	ACTIVITY DESCRIPTION	EARLY START	EARLY FINISH	LATE START	LATE FINISH	TOTAL FLOAT
..G120	*	8	8	0 PR SS	6 Set - new abutments	2JUL11	3JUL11	2JUL11	3JUL11	4
..G200		3	3	0 SU SS	2 Set bearings	3JUL11	3JUL11	4JUL11	4JUL11*	30
..G202		8	8	0 SU	Set - new bridge	3JUL11	3JUL11	3JUL11	3JUL11	4
G200		3	3	0 SAUGU	Set bearings	3JUL11	3JUL11	4JUL11	4JUL11*	30
..G124		6	6	0 PR SS	2 Form & grout abutments	3JUL11	3JUL11	3JUL11	3JUL11	6
..G202	*	8	8	0 PR FF	-2 Set - new bridge	3JUL11	3JUL11	3JUL11	3JUL11	4
..G214		1	1	0 SU	Remove detour - Open Bridge	4JUL11	4JUL11	4JUL11	4JUL11	4
G202		8	8	0 RIGG	Set - new bridge	3JUL11	3JUL11	3JUL11	3JUL11	4
..G122	*	8	8	0 PR	Drill & grout dowels	3JUL11	3JUL11	3JUL11	3JUL11	4
..G124		6	6	0 PR	Form & grout abutments	3JUL11	3JUL11	3JUL11	3JUL11	6
..G200	*	3	3	0 SU FF	-2 Set bearings	3JUL11	3JUL11	4JUL11	4JUL11*	30
..G206	*	6	6	0 SU	Grout & Set - approach slabs	3JUL11	3JUL11	3JUL11	4JUL11	4
G206		6	6	0 JFW	Grout & Set - approach slabs	3JUL11	3JUL11	3JUL11	4JUL11	4
..G202	*	8	8	0 PR	Set - new bridge	3JUL11	3JUL11	3JUL11	3JUL11	4
..G208	*	6	6	0 SU	Flowfill & waterproofing	3JUL11	4JUL11	4JUL11	4JUL11	4
G208		6	6	0 WTRP	Flowfill & waterproofing	3JUL11	4JUL11	4JUL11	4JUL11	4
..G206	*	6	6	0 PR	Grout & Set - approach slabs	3JUL11	3JUL11	3JUL11	4JUL11	4
..G210	*	7	7	0 SU	Backfill	4JUL11	4JUL11	4JUL11	4JUL11	4
G210		7	7	0 JFW	Backfill	4JUL11	4JUL11	4JUL11	4JUL11	4
..G208	*	6	6	0 PR	Flowfill & waterproofing	3JUL11	4JUL11	4JUL11	4JUL11	4
..G212	*	5	5	0 SU	Complete binder & striping	4JUL11	4JUL11	4JUL11	4JUL11	4
G212		5	5	0 PAVE	Complete binder & striping	4JUL11	4JUL11	4JUL11	4JUL11	4
..G210	*	7	7	0 PR	Backfill	4JUL11	4JUL11	4JUL11	4JUL11	4
..G214	*	1	1	0 SU	Remove detour - Open Bridge	4JUL11	4JUL11	4JUL11	4JUL11	4
G214		1	1	0 JFW	Remove detour - Open Bridge	4JUL11	4JUL11	4JUL11	4JUL11	4
..G200		3	3	0 PR	Set bearings	3JUL11	3JUL11	4JUL11	4JUL11*	30
..G212	*	5	5	0 PR	Complete binder & striping	4JUL11	4JUL11	4JUL11	4JUL11	4