

| Activity ID | Activity Name | OD | Start | Finish | Total Float | Ca... | 2010 | | | | | | | | | | | | | | | | | | | | | | | | | | | | | | | 2011 | | | | | | |
|--|---|----|-----------|-----------|-------------|-------|--|-----------|-----------|-----|-------|------|----|----|----|----|------|----|----|----|----|--------|----|----|----|----|-----------|----|----|----|----|---------|----|----|----|----|----------|------|----|----|----|----------|----|----|
| | | | | | | | May | | | | | June | | | | | July | | | | | August | | | | | September | | | | | October | | | | | November | | | | | December | | |
| | | | | | | | 5 | 02 | 09 | 16 | 23 | 30 | 06 | 13 | 20 | 27 | 04 | 11 | 18 | 25 | 01 | 08 | 15 | 22 | 29 | 05 | 12 | 19 | 26 | 03 | 10 | 17 | 24 | 31 | 07 | 14 | 21 | 28 | 05 | 12 | 19 | 26 | 02 | 09 |
| HD.9630 | Review 75% Highway Design | 15 | 14-Jun-10 | 02-Jul-10 | 157 | 5-... | Review 75% Highway Design | | | | | | | | | | | | | | | | | | | | | | | | | | | | | | | | | | | | | |
| 100% Design | | | | | | | 45 | 06-Jul-10 | 07-Sep-10 | 157 | 5-... | | | | | | | | | | | | | | | | | | | | | | | | | | | | | | | | | |
| HD.9640 | Prepare & Submit 100% Highway Design | 30 | 06-Jul-10 | 16-Aug-10 | 157 | 5-... | Prepare & Submit 100% Highway Design | | | | | | | | | | | | | | | | | | | | | | | | | | | | | | | | | | | | | |
| HD.9650 | Review & Accept 100% Highway Design | 15 | 17-Aug-10 | 07-Sep-10 | 157 | 5-... | Review & Accept 100% Highway Design | | | | | | | | | | | | | | | | | | | | | | | | | | | | | | | | | | | | | |
| PROCUREMENT | | | | | | | 138 | 02-Apr-10 | 15-Oct-10 | 133 | | | | | | | | | | | | | | | | | | | | | | | | | | | | | | | | | | |
| Subcontractor Buyout/Procurement | | | | | | | 25 | 02-Apr-10 | 06-May-10 | 188 | 5-... | | | | | | | | | | | | | | | | | | | | | | | | | | | | | | | | | |
| Superstructure Erector | | | | | | | 25 | 02-Apr-10 | 06-May-10 | 188 | 5-... | | | | | | | | | | | | | | | | | | | | | | | | | | | | | | | | | |
| Subc.T1060 | Prepare & Distribute Bid Package to Prospective Bidders | 20 | 02-Apr-10 | 29-Apr-10 | 188 | 5-... | Prepare & Distribute Bid Package to Prospective Bidders | | | | | | | | | | | | | | | | | | | | | | | | | | | | | | | | | | | | | |
| Subc.T1070 | Review Proposals, Select Bidder & Execute Subcontract | 5 | 30-Apr-10 | 06-May-10 | 188 | 5-... | Review Proposals, Select Bidder & Execute Subcontract | | | | | | | | | | | | | | | | | | | | | | | | | | | | | | | | | | | | | |
| Submittals & Procurement | | | | | | | 138 | 02-Apr-10 | 15-Oct-10 | 133 | | | | | | | | | | | | | | | | | | | | | | | | | | | | | | | | | | |
| Baseline Schedule | | | | | | | 65 | 02-Apr-10 | 02-Jul-10 | 127 | 5-... | | | | | | | | | | | | | | | | | | | | | | | | | | | | | | | | | |
| Subm.2000 | Prepare Submittal - Baseline Schedule | 27 | 02-Apr-10 | 10-May-10 | 127 | 5-... | Prepare Submittal - Baseline Schedule | | | | | | | | | | | | | | | | | | | | | | | | | | | | | | | | | | | | | |
| Subm.2010 | Review & Accept Submittal - Baseline Schedule | 15 | 11-May-10 | 01-Jun-10 | 127 | 5-... | Review & Accept Submittal - Baseline Schedule | | | | | | | | | | | | | | | | | | | | | | | | | | | | | | | | | | | | | |
| Subm.2020 | Revise & Resubmit Submittal - Baseline Schedule | 8 | 02-Jun-10 | 11-Jun-10 | 127 | 5-... | Revise & Resubmit Submittal - Baseline Schedule | | | | | | | | | | | | | | | | | | | | | | | | | | | | | | | | | | | | | |
| Subm.2030 | Review & Accept Resubmittal - Baseline Schedule | 15 | 14-Jun-10 | 02-Jul-10 | 127 | 5-... | Review & Accept Resubmittal - Baseline Schedule | | | | | | | | | | | | | | | | | | | | | | | | | | | | | | | | | | | | | |
| Quality System Management | | | | | | | 55 | 02-Apr-10 | 18-Jun-10 | 213 | | | | | | | | | | | | | | | | | | | | | | | | | | | | | | | | | | |
| Subm.1510 | Prepare Submittal - Quality System Management | 30 | 02-Apr-10 | 13-May-10 | 153 | 5-... | Prepare Submittal - Quality System Management | | | | | | | | | | | | | | | | | | | | | | | | | | | | | | | | | | | | | |
| Subm.1520 | Review & Accept Submittal - Quality System Management | 15 | 14-May-10 | 04-Jun-10 | 153 | 5-... | Review & Accept Submittal - Quality System Management | | | | | | | | | | | | | | | | | | | | | | | | | | | | | | | | | | | | | |
| Earthwork Quality Control Plan | | | | | | | 55 | 02-Apr-10 | 18-Jun-10 | 137 | 5-... | | | | | | | | | | | | | | | | | | | | | | | | | | | | | | | | | |
| Subm.2060 | Prepare Submittal - Earthwork QC Plan | 40 | 02-Apr-10 | 27-May-10 | 137 | 5-... | Prepare Submittal - Earthwork QC Plan | | | | | | | | | | | | | | | | | | | | | | | | | | | | | | | | | | | | | |
| Subm.2070 | Review & Accept Submittal - Earthwork QC Plan | 15 | 28-May-10 | 18-Jun-10 | 137 | 5-... | Review & Accept Submittal - Earthwork QC Plan | | | | | | | | | | | | | | | | | | | | | | | | | | | | | | | | | | | | | |
| Hot Mix Asphalt Quality Control Plan | | | | | | | 55 | 02-Apr-10 | 18-Jun-10 | 213 | 5-... | | | | | | | | | | | | | | | | | | | | | | | | | | | | | | | | | |
| Subm.2080 | Prepare Submittal - HMA QC Plan | 40 | 02-Apr-10 | 27-May-10 | 213 | 5-... | Prepare Submittal - HMA QC Plan | | | | | | | | | | | | | | | | | | | | | | | | | | | | | | | | | | | | | |
| Subm.2090 | Review & Accept Submittal - HMA QC Plan | 15 | 28-May-10 | 18-Jun-10 | 213 | 5-... | Review & Accept Submittal - HMA QC Plan | | | | | | | | | | | | | | | | | | | | | | | | | | | | | | | | | | | | | |
| Portland Cement Concrete Quality Control Plan | | | | | | | 55 | 02-Apr-10 | 18-Jun-10 | 192 | 5-... | | | | | | | | | | | | | | | | | | | | | | | | | | | | | | | | | |
| Subm.3000 | Prepare Submittal - PCC QC Plan | 40 | 02-Apr-10 | 27-May-10 | 192 | 5-... | Prepare Submittal - PCC QC Plan | | | | | | | | | | | | | | | | | | | | | | | | | | | | | | | | | | | | | |
| Subm.3010 | Review & Accept Submittal - PCC QC Plan | 15 | 28-May-10 | 18-Jun-10 | 192 | 5-... | Review & Accept Submittal - PCC QC Plan | | | | | | | | | | | | | | | | | | | | | | | | | | | | | | | | | | | | | |
| SWPPP | | | | | | | 55 | 02-Apr-10 | 18-Jun-10 | 148 | 5-... | | | | | | | | | | | | | | | | | | | | | | | | | | | | | | | | | |
| Subm.1450 | Prepare Submittal - SWPPP | 40 | 02-Apr-10 | 27-May-10 | 148 | 5-... | Prepare Submittal - SWPPP | | | | | | | | | | | | | | | | | | | | | | | | | | | | | | | | | | | | | |
| Subm.1460 | Review & Accept Submittal - SWPPP | 15 | 28-May-10 | 18-Jun-10 | 148 | 5-... | Review & Accept Submittal - SWPPP | | | | | | | | | | | | | | | | | | | | | | | | | | | | | | | | | | | | | |
| Structural Steel | | | | | | | 39 | 15-Jun-10 | 09-Aug-10 | 130 | 5-... | | | | | | | | | | | | | | | | | | | | | | | | | | | | | | | | | |
| Subm.1310 | Prepare Submittal - Structural Steel | 5 | 15-Jun-10 | 21-Jun-10 | 130 | 5-... | Prepare Submittal - Structural Steel | | | | | | | | | | | | | | | | | | | | | | | | | | | | | | | | | | | | | |
| Subm.1340 | Review & Accept Submittal - Structural Steel | 5 | 22-Jun-10 | 28-Jun-10 | 130 | 5-... | Review & Accept Submittal - Structural Steel | | | | | | | | | | | | | | | | | | | | | | | | | | | | | | | | | | | | | |
| Subm.1345 | Procure, Fabricate & Deliver - Structural Steel | 29 | 29-Jun-10 | 09-Aug-10 | 130 | 5-... | Procure, Fabricate & Deliver - Structural Steel | | | | | | | | | | | | | | | | | | | | | | | | | | | | | | | | | | | | | |
| Pre-Cast Concrete Bridge Components | | | | | | | 65 | 16-Jul-10 | 15-Oct-10 | 129 | 5-... | | | | | | | | | | | | | | | | | | | | | | | | | | | | | | | | | |
| Subm.1050 | Prepare Submittal - Pre-Cast Concrete Bridge Components | 10 | 16-Jul-10 | 29-Jul-10 | 129 | 5-... | Prepare Submittal - Pre-Cast Concrete Bridge Components | | | | | | | | | | | | | | | | | | | | | | | | | | | | | | | | | | | | | |
| Subm.1080 | Review & Accept Submittal - Pre-Cast Concrete Bridge Components | 15 | 30-Jul-10 | 19-Aug-10 | 129 | 5-... | Review & Accept Submittal - Pre-Cast Concrete Bridge Components | | | | | | | | | | | | | | | | | | | | | | | | | | | | | | | | | | | | | |
| Subm.1090 | Procure, Fabricate & Deliver Materials - Pre-Cast Concrete Bridge Co... | 40 | 20-Aug-10 | 15-Oct-10 | 129 | 5-... | Procure, Fabricate & Deliver Materials - Pre-Cast Concrete Bridge Components | | | | | | | | | | | | | | | | | | | | | | | | | | | | | | | | | | | | | |
| Demolition Plan | | | | | | | 40 | 20-Aug-10 | 15-Oct-10 | 128 | 5-... | | | | | | | | | | | | | | | | | | | | | | | | | | | | | | | | | |
| Subm.1230 | Prepare Submittal - Demolition Plan | 5 | 20-Aug-10 | 26-Aug-10 | 128 | 5-... | Prepare Submittal - Demolition Plan | | | | | | | | | | | | | | | | | | | | | | | | | | | | | | | | | | | | | |
| Subm.1240 | Review Submittal - Demolition Plan | 15 | 27-Aug-10 | 17-Sep-10 | 128 | 5-... | Review Submittal - Demolition Plan | | | | | | | | | | | | | | | | | | | | | | | | | | | | | | | | | | | | | |
| Subm.1250 | Revise & Resubmit Submittal - Demolition Plan | 5 | 20-Sep-10 | 24-Sep-10 | 128 | 5-... | Revise & Resubmit Submittal - Demolition Plan | | | | | | | | | | | | | | | | | | | | | | | | | | | | | | | | | | | | | |
| Subm.1260 | Re-review & Accept Submittal - Demolition Plan | 15 | 27-Sep-10 | 15-Oct-10 | 128 | 5-... | Re-review & Accept Submittal - Demolition Plan | | | | | | | | | | | | | | | | | | | | | | | | | | | | | | | | | | | | | |
| Superstructure Erection | | | | | | | 35 | 15-Jun-10 | 03-Aug-10 | 134 | 5-... | | | | | | | | | | | | | | | | | | | | | | | | | | | | | | | | | |
| Subm.1350 | Prepare Submittal - Superstructure Erection | 20 | 15-Jun-10 | 13-Jul-10 | 134 | 5-... | Prepare Submittal - Superstructure Erection | | | | | | | | | | | | | | | | | | | | | | | | | | | | | | | | | | | | | |
| Subm.1380 | Review & Accept Submittal - Superstructure Erection | 15 | 14-Jul-10 | 03-Aug-10 | 134 | 5-... | Review & Accept Submittal - Superstructure Erection | | | | | | | | | | | | | | | | | | | | | | | | | | | | | | | | | | | | | |
| Prefabrication Plan (Bridge Staging Area) | | | | | | | 55 | 02-Apr-10 | 18-Jun-10 | 153 | 5-... | | | | | | | | | | | | | | | | | | | | | | | | | | | | | | | | | |
| Subm.1400 | Prepare Submittal - Prefabrication Plan (Bridge Staging Area) | 40 | 02-Apr-10 | 27-May-10 | 153 | 5-... | Prepare Submittal - Prefabrication Plan (Bridge Staging Area) | | | | | | | | | | | | | | | | | | | | | | | | | | | | | | | | | | | | | |
| Subm.1410 | Review & Accept Submittal - Prefabrication Plan (Bridge Staging Area) | 15 | 28-May-10 | 18-Jun-10 | 153 | 5-... | Review & Accept Submittal - Prefabrication Plan (Bridge Staging Area) | | | | | | | | | | | | | | | | | | | | | | | | | | | | | | | | | | | | | |
| Movement Plan (Travel Path) | | | | | | | 55 | 02-Apr-10 | 18-Jun-10 | 210 | 5-... | | | | | | | | | | | | | | | | | | | | | | | | | | | | | | | | | |
| Subm.1490 | Prepare Submittal - Movement Plan (Travel Path) | 40 | 02-Apr-10 | 27-May-10 | 210 | 5-... | Prepare Submittal - Movement Plan (Travel Path) | | | | | | | | | | | | | | | | | | | | | | | | | | | | | | | | | | | | | |
| Subm.1500 | Review & Accept Submittal - Movement Plan (Travel Path) | 15 | 28-May-10 | 18-Jun-10 | 210 | 5-... | Review & Accept Submittal - Movement Plan (Travel Path) | | | | | | | | | | | | | | | | | | | | | | | | | | | | | | | | | | | | | |
| Rebar Shop Drawings | | | | | | | 35 | 24-Jun-10 | 12-Aug-10 | 132 | 5-... | | | | | | | | | | | | | | | | | | | | | | | | | | | | | | | | | |
| Subm.1530 | Prepare Submittal - Rebar Shop Drawings | 20 | 24-Jun-10 | 22-Jul-10 | 132 | 5-... | Prepare Submittal - Rebar Shop Drawings | | | | | | | | | | | | | | | | | | | | | | | | | | | | | | | | | | | | | |
| Subm.1540 | Review & Accept Submittal - Rebar Shop Drawings | 15 | 23-Jul-10 | 12-Aug-10 | 132 | 5-... | Review & Accept Submittal - Rebar Shop Drawings | | | | | | | | | | | | | | | | | | | | | | | | | | | | | | | | | | | | | |
| Deck Placement Plan | | | | | | | 55 | 24-May-10 | 10-Aug-10 | 134 | 5-... | | | | | | | | | | | | | | | | | | | | | | | | | | | | | | | | | |
| Subm.1550 | Prepare Submittal - Deck Placement Plan | 40 | 24-May-10 | 20-Jul-10 | 134 | 5-... | Prepare Submittal - Deck Placement Plan | | | | | | | | | | | | | | | | | | | | | | | | | | | | | | | | | | | | | |
| Subm.1560 | Review & Accept Submittal - Deck Placement Plan | 15 | 21-Jul-10 | 10-Aug-10 | 134 | 5-... | Review & Accept Submittal - Deck Placement Plan | | | | | | | | | | | | | | | | | | | | | | | | | | | | | | | | | | | | | |
| Bearing Pads Shop Drawings | | | | | | | 55 | 24-May-10 | 10-Aug-10 | 134 | 5-... | | | | | | | | | | | | | | | | | | | | | | | | | | | | | | | | | |
| Subm.1570 | Prepare Submittal - Bearing Pads Shop Drawings | 40 | 24-May-10 | 20-Jul-10 | 134 | 5-... | Prepare Submittal - Bearing Pads Shop Drawings | | | | | | | | | | | | | | | | | | | | | | | | | | | | | | | | | | | | | |
| Subm.1580 | Review & Accept Submittal - Bearing Pads Shop Drawings | 15 | 21-Jul-10 | 10-Aug-10 | 134 | 5-... | Review & Accept Submittal - Bearing Pads Shop Drawings | | | | | | | | | | | | | | | | | | | | | | | | | | | | | | | | | | | | | |
| Protective Screen Shop Drawings | | | | | | | 55 | 24-May-10 | 10-Aug-10 | 180 | 5-... | | | | | | | | | | | | | | | | | | | | | | | | | | | | | | | | | |
| Subm.1590 | Prepare Submittal - Protective Screen Shop Drawings | 40 | 24-May-10 | 20-Jul-10 | 180 | 5-... | Prepare Submittal - Protective Screen Shop Drawings | | | | | | | | | | | | | | | | | | | | | | | | | | | | | | | | | | | | | |
| Subm.1600 | Review & Accept Submittal - Protective Screen Shop Drawings | 15 | 21-Jul-10 | 10-Aug-10 | 180 | 5-... | Review & Accept Submittal - Protective Screen Shop Drawings | | | | | | | | | | | | | | | | | | | | | | | | | | | | | | | | | | | | | |
| CONSTRUCTION | | | | | | | 134 | 06-May-10 | 12-Nov-10 | 124 | | | | | | | | | | | | | | | | | | | | | | | | | | | | | | | | | | |
| START-UP | | | | | | | 31 | 04-Jun-10 | 19-Jul-10 | 133 | 5-... | | | | | | | | | | | | | | | | | | | | | | | | | | | | | | | | | |



- Remaining Level of Effort
- Actual Level of Effort
- Actual Work
- Remaining Work
- Critical Remaining Work
- ◆ Milestone

Phillipston: Bridge Replacement - Route 2 over Route 2A-Baseline Schedule Resubmittal REV01

Project ID: 603495-1

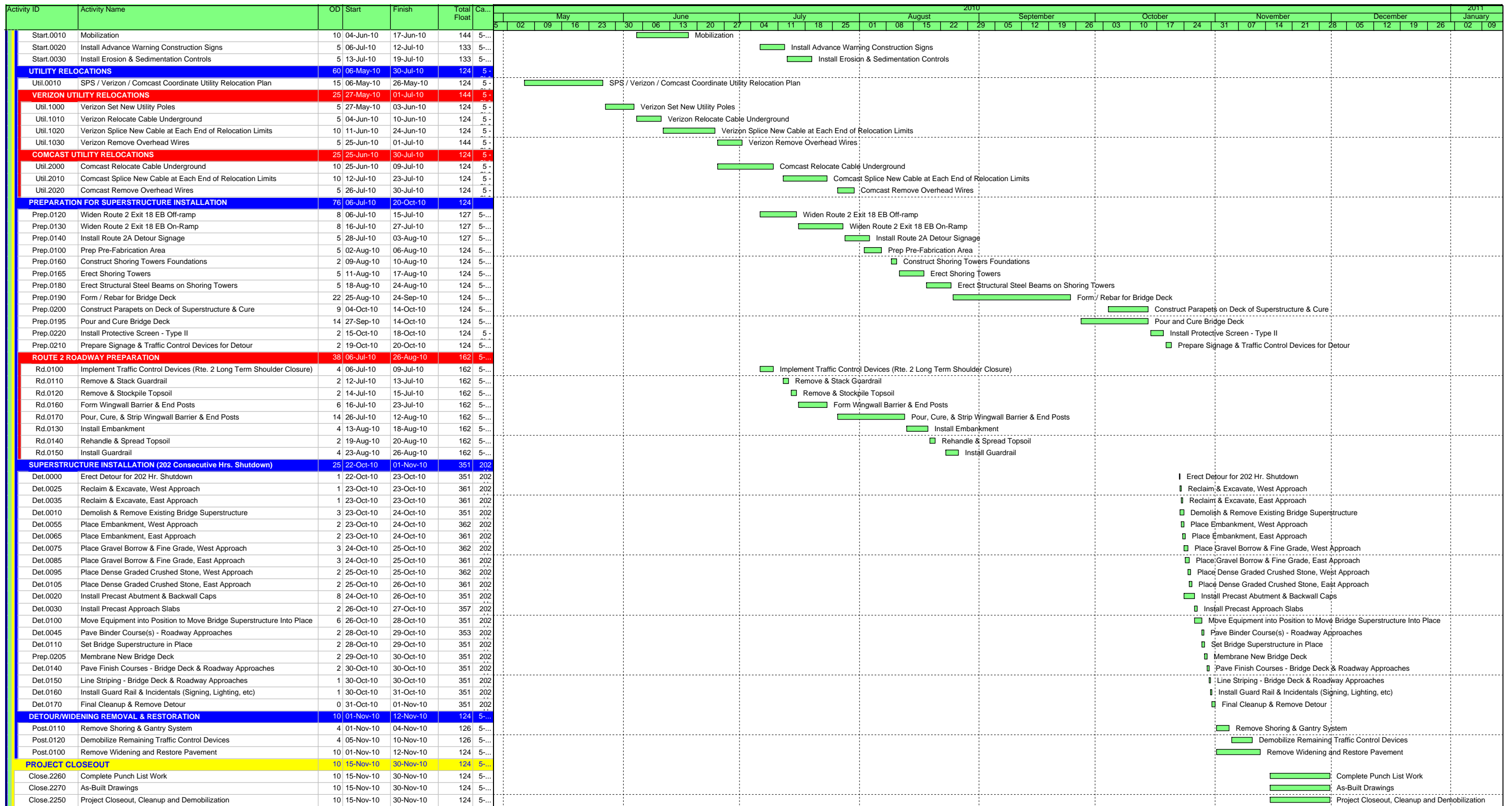
Data Date: 02-Apr-10

TASK filter: All Activities

Page 2 of 3

Run Date: 08-Jul-10

| Date | Revision | Checked | Approved |
|------|----------|---------|----------|
| | | | |



- Remaining Level of Effort
- Actual Level of Effort
- Actual Work
- Remaining Work
- Critical Remaining Work
- Milestone

Phillipston: Bridge Replacement - Route 2 over Route 2A-Baseline Schedule Resubmittal REV01

Project ID: 603495-1

Data Date: 02-Apr-10

TASK filter: All Activities

Page 3 of 3

Run Date: 08-Jul-10

| Date | Revision | Checked | Approved |
|------|----------|---------|----------|
| | | | |