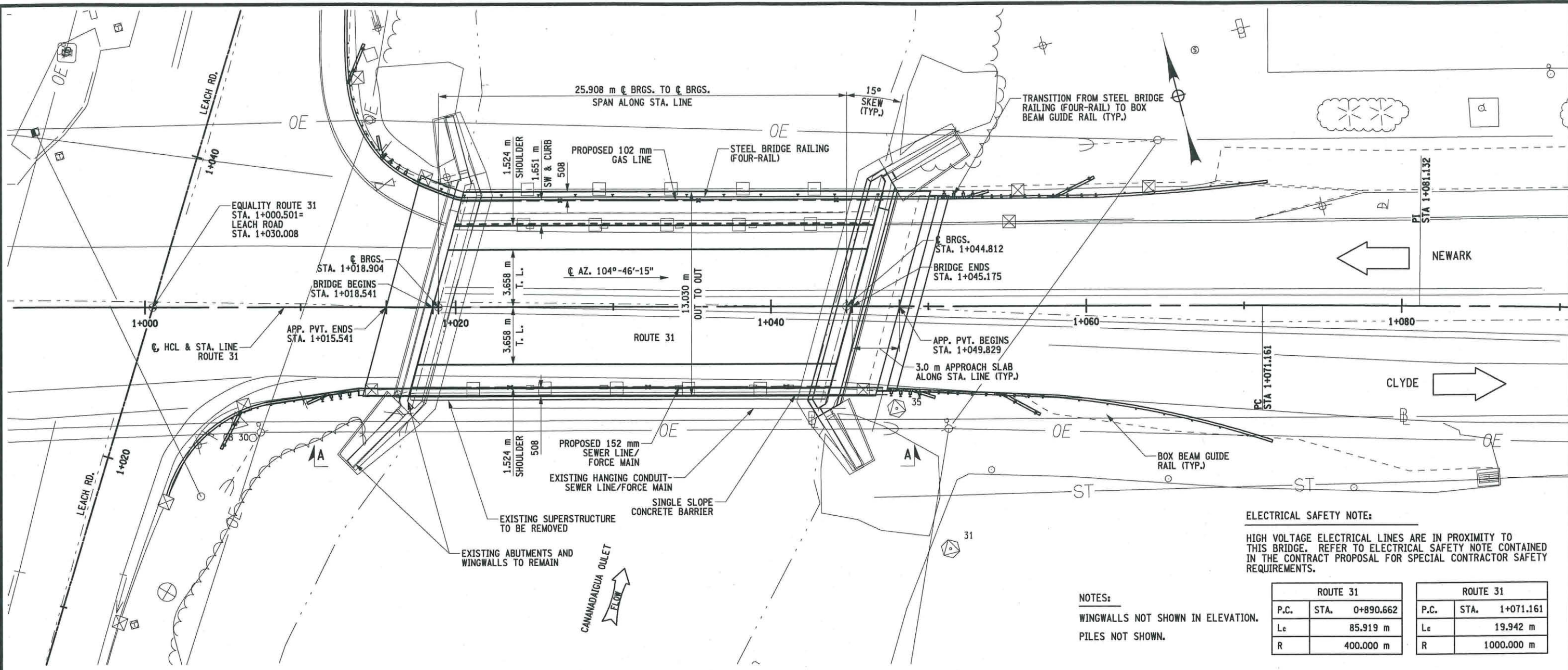


FILE NAME = 403168_CPB_70_GEN_PLN.DGN
 DATE/TIME = 15-MAY-2008 11:54
 USER = mweber

DESIGN SUPERVISOR T. WILLETTS
 JOB MANAGER P. DEGENNARO
 CHECKED BY G. BUCKLEY
 ESTIMATED BY T. WILLETTS
 DRAFTED BY G. BUCKLEY
 CHECKED BY T. WILLETTS



ELECTRICAL SAFETY NOTE:
 HIGH VOLTAGE ELECTRICAL LINES ARE IN PROXIMITY TO THIS BRIDGE. REFER TO ELECTRICAL SAFETY NOTE CONTAINED IN THE CONTRACT PROPOSAL FOR SPECIAL CONTRACTOR SAFETY REQUIREMENTS.

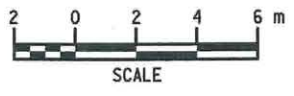
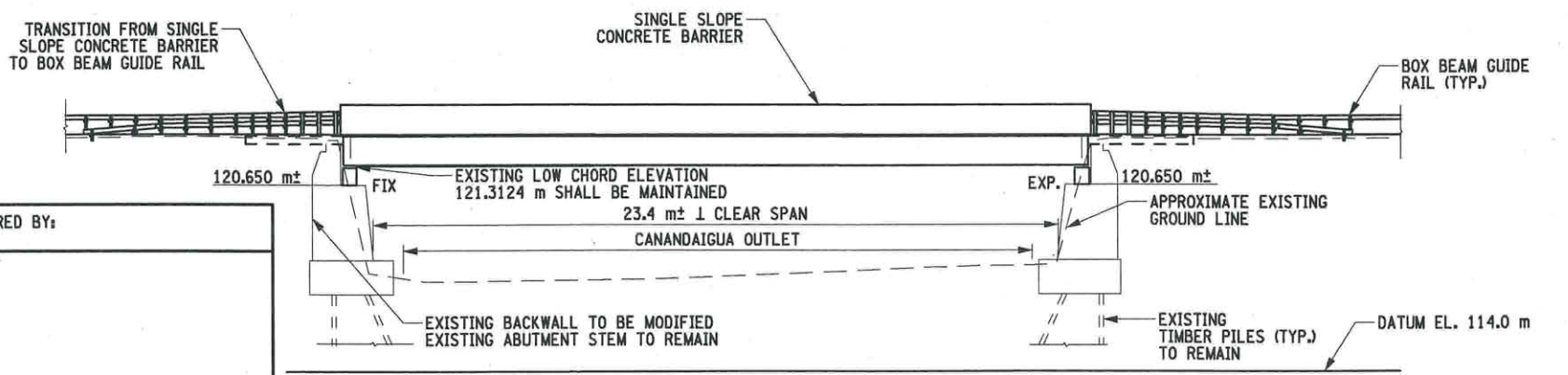
NOTES:
 WINGWALLS NOT SHOWN IN ELEVATION.
 PILES NOT SHOWN.

ROUTE 31		ROUTE 31	
P.C.	STA.	P.C.	STA.
	0+890.662		1+071.161
Lc	85.919 m	Lc	19.942 m
R	400.000 m	R	1000.000 m

NOTE:
 ALL STATIONS, ELEVATIONS AND DIMENSIONS SHOULD BE FIELD VERIFIED.
 ASSUMED HORIZONTAL STATION LINE
 ALL ELEVATIONS ARE IN METERS.

PROPOSED WORK INCLUDES:
 REPLACING SUPERSTRUCTURE, BEARINGS AND ABUTMENT BACKWALLS.
 REPAIRING ABUTMENT STEM AND BRIDGE SEAT AS NECESSARY.
 APPROACH AND SUPERSTRUCTURE ASPHALT OVERLAY
 APPROACH- SLAB, PAVEMENT, CURBING AND RAILING.
 UTILITIES ON BRIDGE AND APPROACH.
 ADDITIONAL SCOUR PROTECTION COUNTERMEASURES NEEDED.

LOAD RATING (LFD)		
INVENTORY	MS 24.3	43.7 METRIC TONS
OPERATING	MS 40.4	72.7 METRIC TONS
LOAD RATING (LRFR)		
INVENTORY	HL-93	2.18
OPERATING	HL-93	2.83

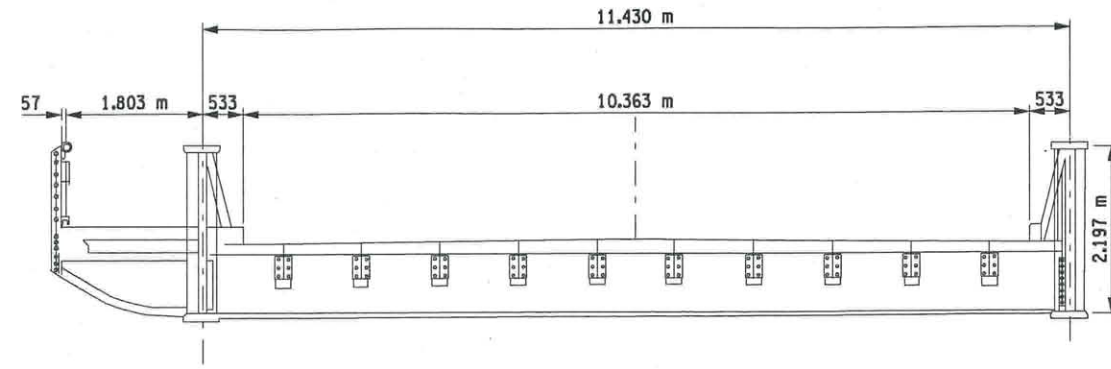


PREPARED BY: ON: **Matthew C. Royce**
 ALTERED BY: ON:

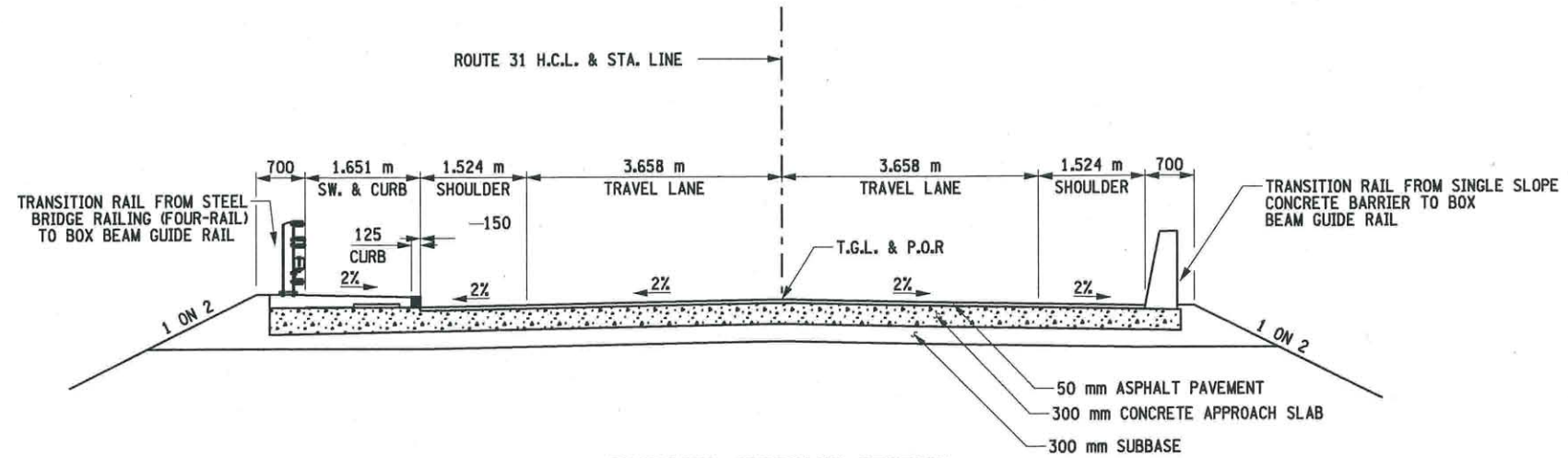
AS BUILT REVISIONS DESCRIPTION OF WORK:	BRIDGE REHABILITATION ROUTE 31 OVER CANANDAIGUA OUTLET S.H. 8028, ROUTE 31 VILLAGE OF LYONS COUNTY: WAYNE	PIN 4031.68 ROUTE 31 PS&E DATE	BRIDGES 1021750	CULVERTS	ALL DIMENSIONS IN mm UNLESS OTHERWISE NOTED	CONTRACT NUMBER D260882
SIGNATURE _____ DATE _____	DOCUMENT NAME: 403168_CPB_70_GEN_PLN.DGN	GENERAL PLAN AND ELEVATION ROUTE 31 OVER CANANDAIGUA OUTLET		DRAWING NO. ST-1 SHEET NO.		

FILE NAME = 403168_CPB_70_SEC_TYP_.DGN
 DATE/TIME = 14-MAY-2008 12:50
 USER = gruth

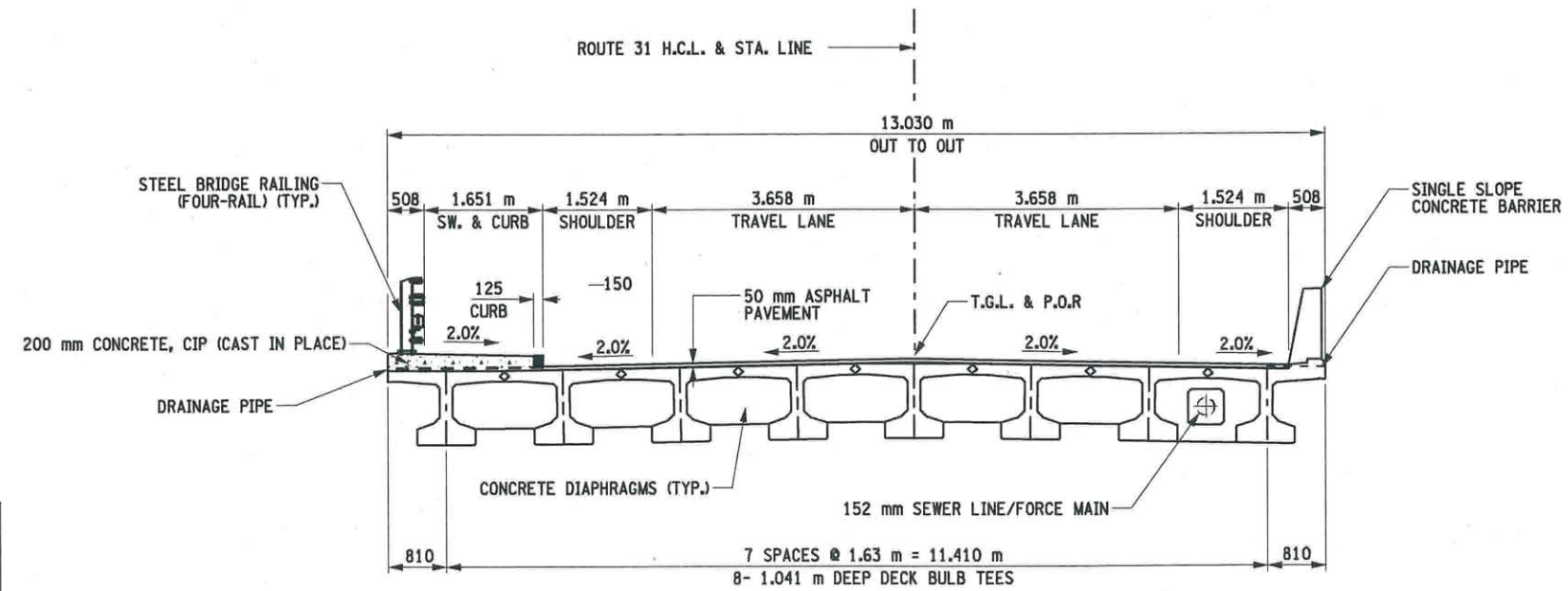
DESIGN SUPERVISOR I. WILLETTS — JOB MANAGER E. DEGENNARO — DESIGNED BY G. BUCKLEY — CHECKED BY I. WILLETTS — ESTIMATED BY I. WILLETTS — DRAFTED BY G. BUCKLEY — CHECKED BY I. WILLETTS



EXISTING BRIDGE SECTION



PROPOSED APPROACH SECTION



PROPOSED BRIDGE SECTION

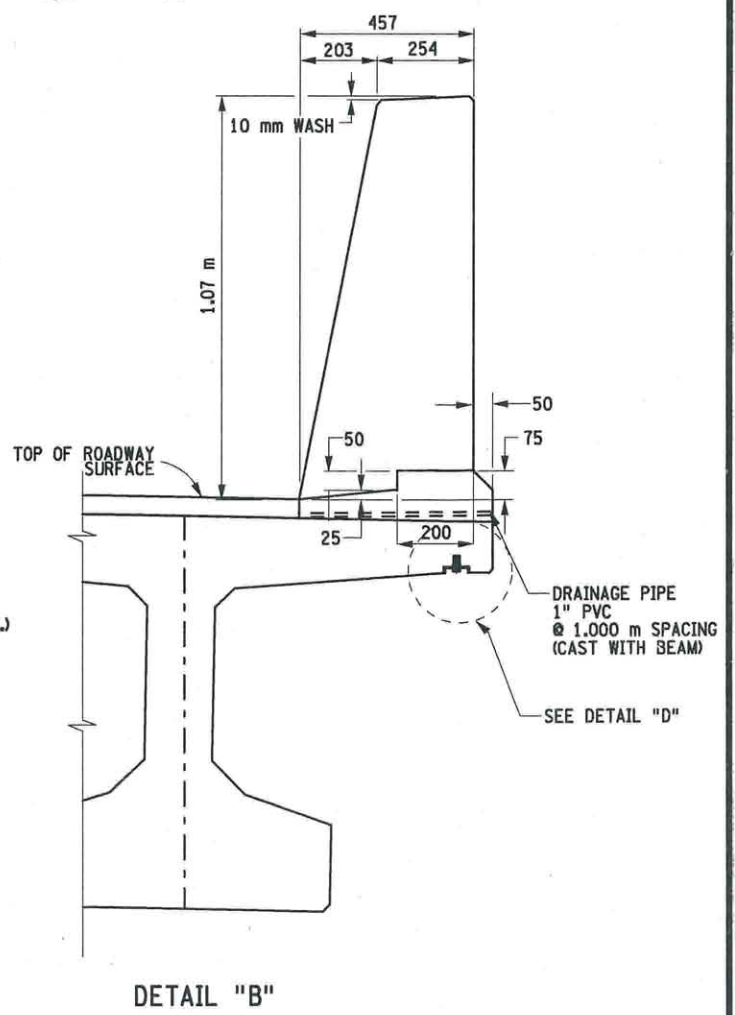
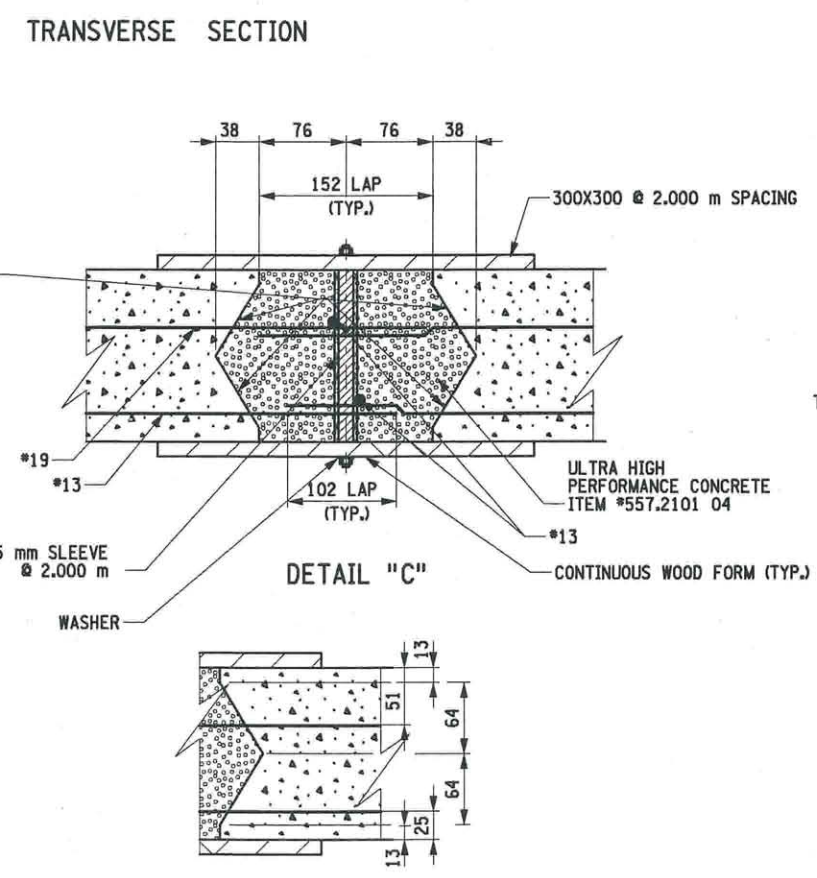
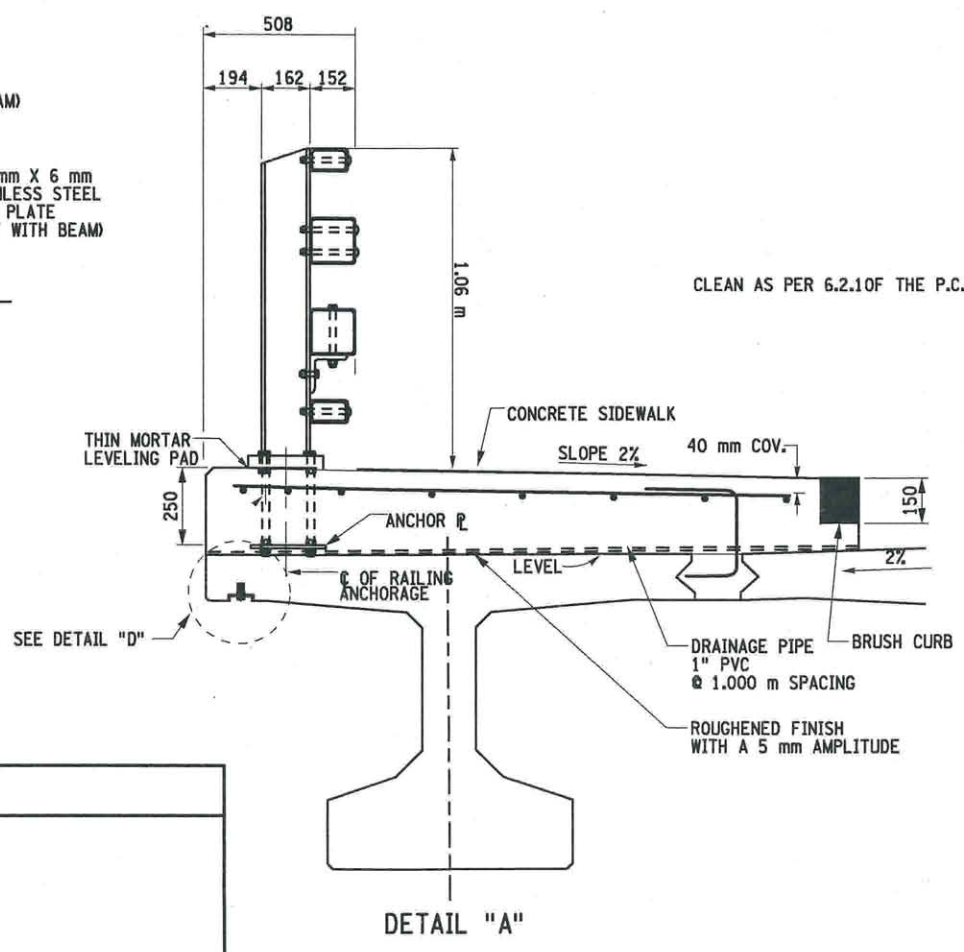
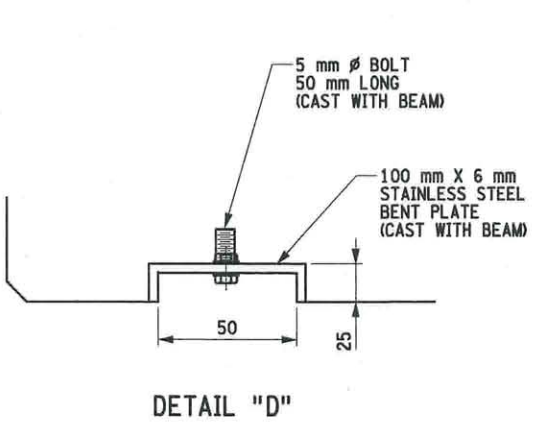
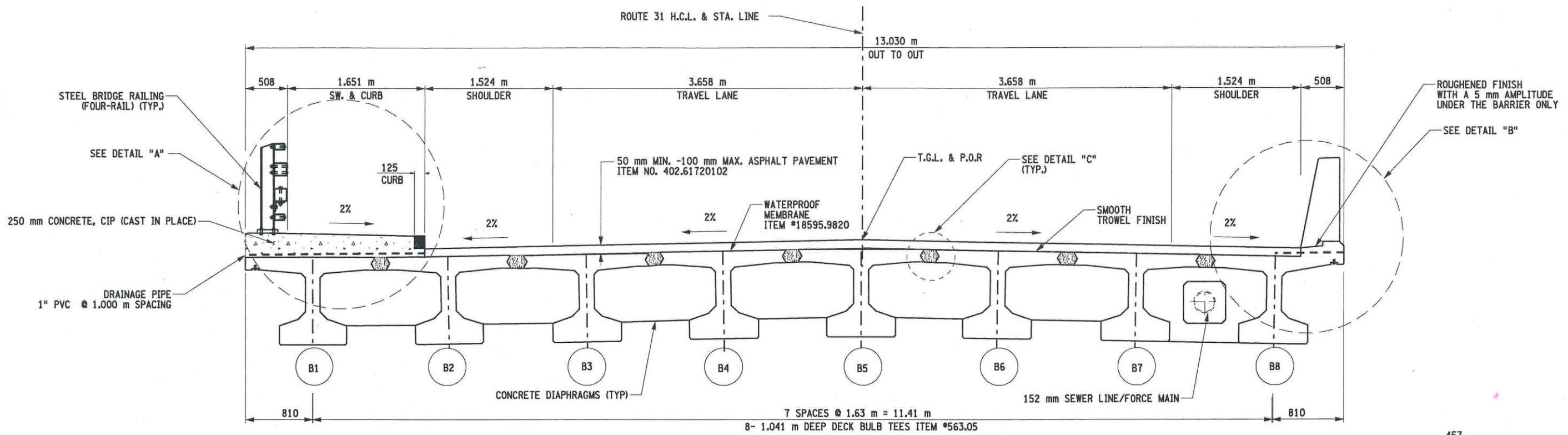
PREPARED BY: ON:	ALTERED BY: ON:
SIGNATURE	DATE

AS BUILT REVISIONS DESCRIPTION OF WORK:	BRIDGE REHABILITATION ROUTE 31 OVER CANANDAIGUA OUTLET S.H. 802B, ROUTE 31 VILLAGE OF LYONS COUNTY: WAYNE	PIN 4031.68 ROUTE 31 PS&E DATE 05/15/08	BRIDGES 1021750	CULVERTS	ALL DIMENSIONS IN mm UNLESS OTHERWISE NOTED	CONTRACT NUMBER D260882
TYPICAL SECTIONS					DRAWING NO. ST-2 SHEET NO.	
ROUTE 31 OVER CANANDAIGUA OUTLET						
NEW YORK STATE DEPARTMENT OF TRANSPORTATION REGION 04						

DOCUMENT NAME: 403168_CPB_70_SEC_TYP_.DGN

FILE NAME = 403168_CPB_70_SEC_TRN.DGN
 DATE/TIME = 14-MAY-2008 14:13
 USER = mweber

DESIGN SUPERVISOR M. ROYCE
 JOB MANAGER J.T. NEIDHART
 DESIGNED BY M. WEBER
 CHECKED BY M. JOBAL
 ESTIMATED BY M. WEBER
 DRAFTED BY E. LABUNSKI
 CHECKED BY M. WEBER



FOR RAILING DETAILS, SEE DWG. NO. ST-
 FOR BARRIER DETAILS, SEE DWG. NO. ST-

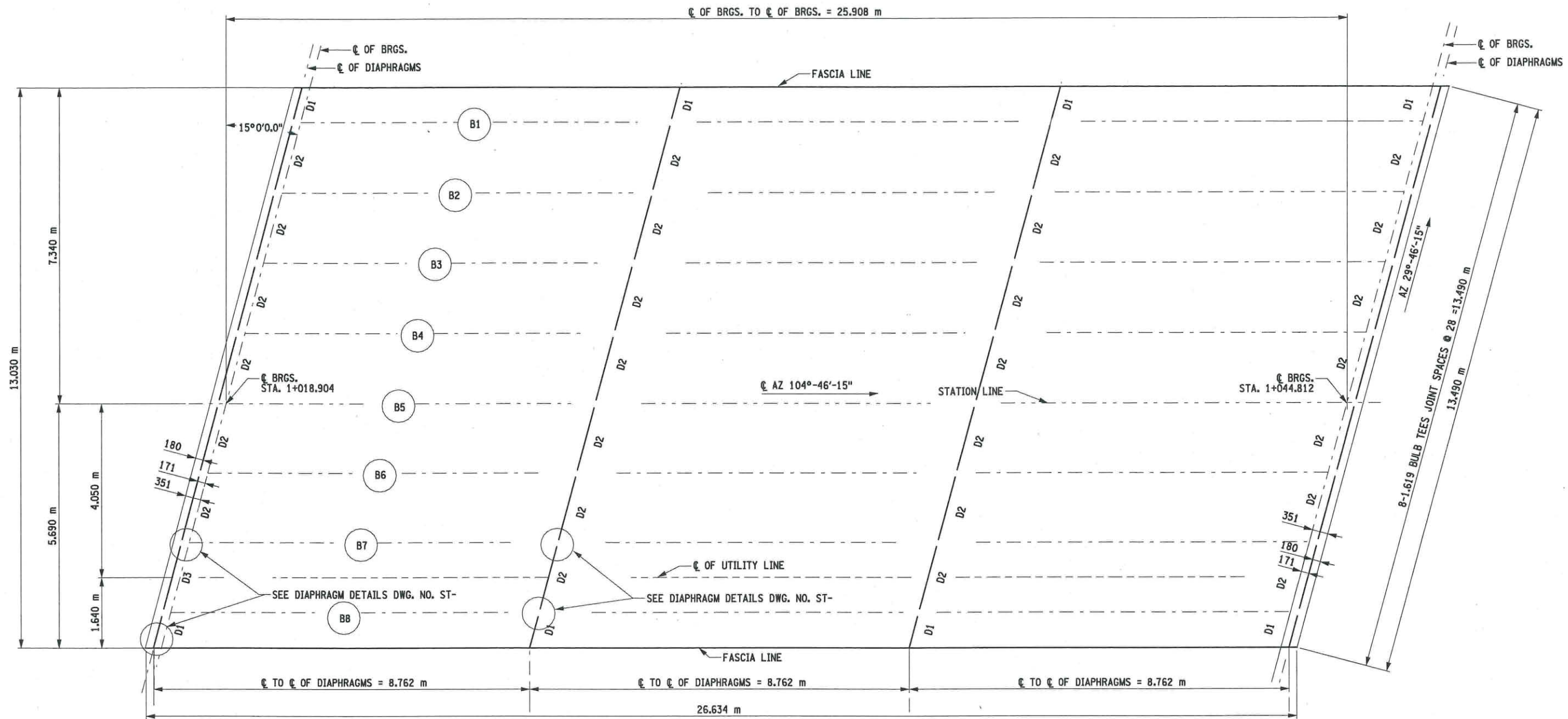
PREPARED BY:
ON: *[Signature]*

ALTERED BY:
ON:

AS BUILT REVISIONS DESCRIPTION OF WORK:	BRIDGE REHABILITATION ROUTE 31 OVER CANANDAIGUA OUTLET S.H. 8028, ROUTE 31 VILLAGE OF LYONS COUNTY: WAYNE	PIN 4031.68 ROUTE 31 PS&E DATE 05/15/08	BRIDGES 1021750	CULVERTS	ALL DIMENSIONS IN mm UNLESS OTHERWISE NOTED	CONTRACT NUMBER D260882	DRAWING NO. ST-17 SHEET NO.
SIGNATURE _____ DATE _____	DOCUMENT NAME: 403168_CPB_70_SEC_TRN.DGN				TRANSVERSE SECTION ROUTE 31 OVER CANANDAIGUA OUTLET	NEW YORK STATE DEPARTMENT OF TRANSPORTATION REGION 04	

FILE NAME = 403168_CPB_70_FRM.DGN
 DATE/TIME = 14-MAY-2008 14:21
 USER = mweber

DESIGN SUPERVISOR M. ROYCE JOB MANAGER J.T. NEIDHART DESIGNED BY M. WEBER CHECKED BY M. WEBER DRAFTED BY E. LABUNSKI CHECKED BY M. WEBER ESTIMATED BY M. WEBER



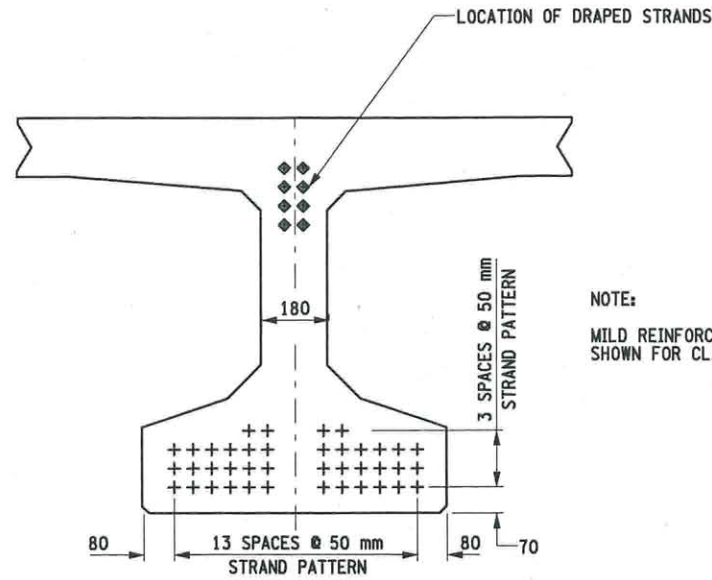
BEAM LAYOUT

PREPARED BY: ON: *[Signature]*
 ALTERED BY: ON: *[Signature]*

AS BUILT REVISIONS DESCRIPTION OF WORK:	BRIDGE REHABILITATION	PIN 4031.68	BRIDGES 1021750	CULVERTS	ALL DIMENSIONS IN mm UNLESS OTHERWISE NOTED	CONTRACT NUMBER
	ROUTE 31 OVER CANANDAIGUA OUTLET	ROUTE 31				D260882
SIGNATURE _____	S.H. 8028, ROUTE 31	PS&E DATE 05/15/08			BEAM LAYOUT	DRAWING NO. ST-18
DATE _____	VILLAGE OF LYONS					SHEET NO.
DOCUMENT NAME: 403168_CPB_70_FRM.DGN	COUNTY: WAYNE				NEW YORK STATE DEPARTMENT OF TRANSPORTATION REGION 04	

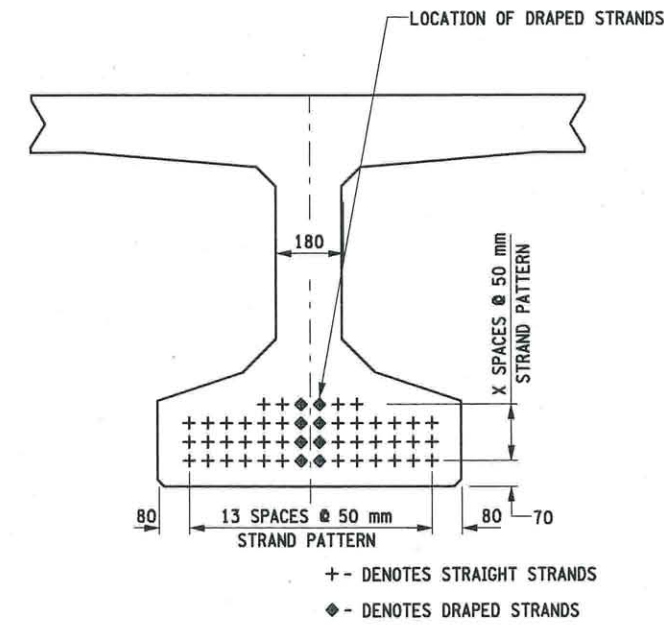
FILE NAME = 403168_CPB_70_DTL_ELV3.DGN
 DATE/TIME = 14-MAY-2008 14:33
 USER = mweber

DESIGN SUPERVISOR M. RUIZ JOB MANAGER J. L. IDHART
 CHECKED BY M. IQBAL ESTIMATED BY M. WEBER DRAFTED BY E. LABUNSKI CHECKED BY M. WEBER

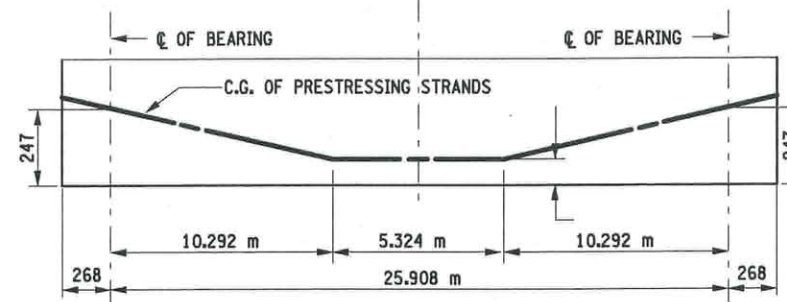


NOTE:
 MILD REINFORCEMENT NOT SHOWN FOR CLARITY.

TYPICAL SECTION @ C BEARINGS USING DRAPED STRANDS

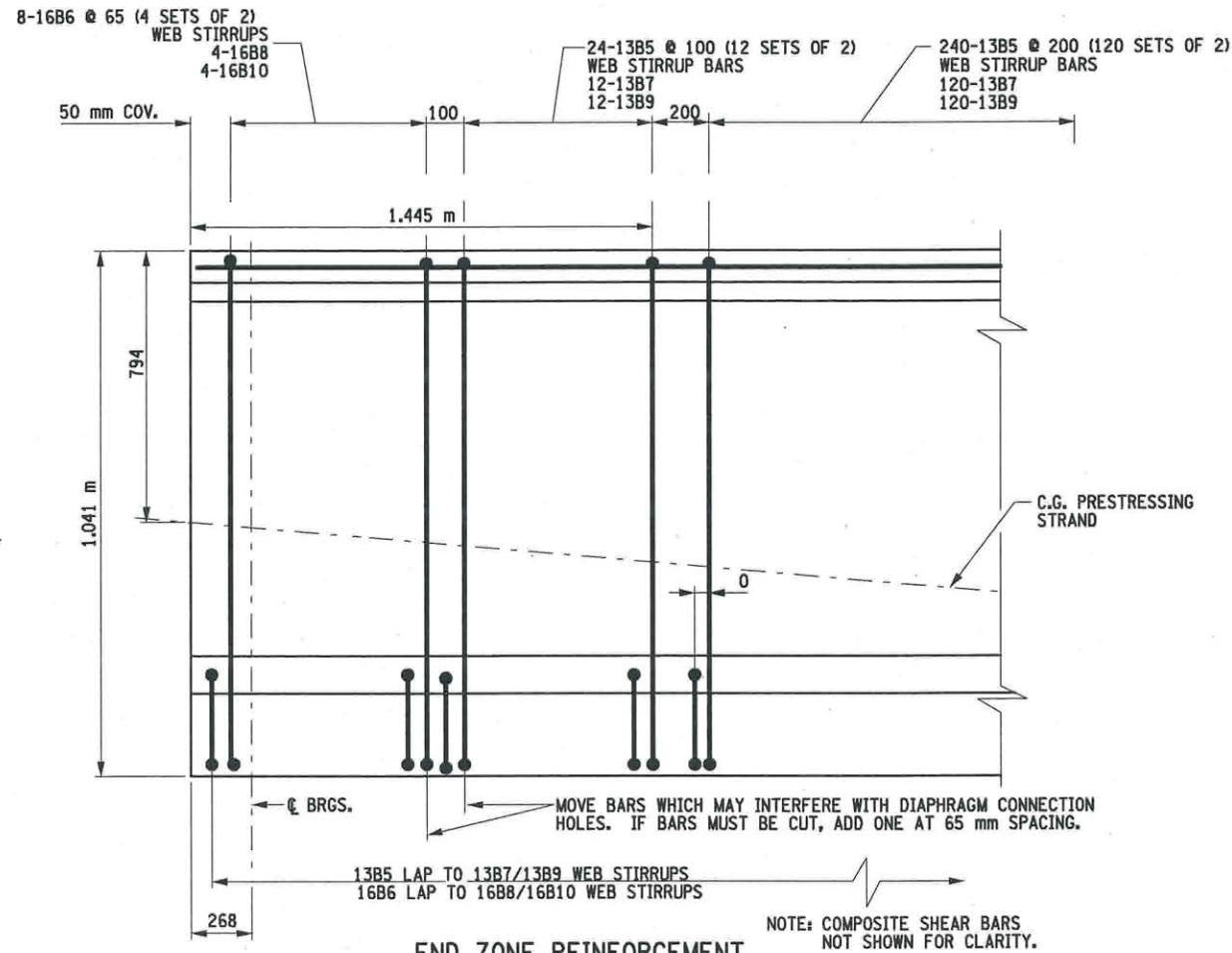


TYPICAL SECTION @ MIDSPAN USING DRAPED STRANDS



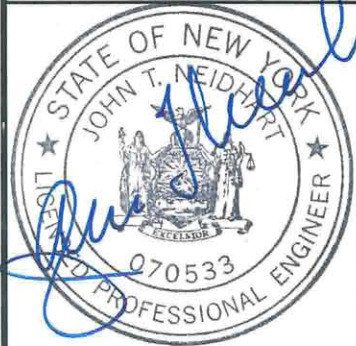
DRAPED TENDON PROFILE
 NOT TO SCALE

NOTES:
 DETAILS ON THE DRAWINGS LABELED AS "NOT TO SCALE" ARE INTENTIONALLY DRAWN NOT TO SCALE FOR VISUAL CLARITY. ALL OTHER DETAILS, FOR WHICH NO SCALE IS SHOWN, ARE DRAWN PROPORTIONAL AND ARE FULLY DIMENSIONED.



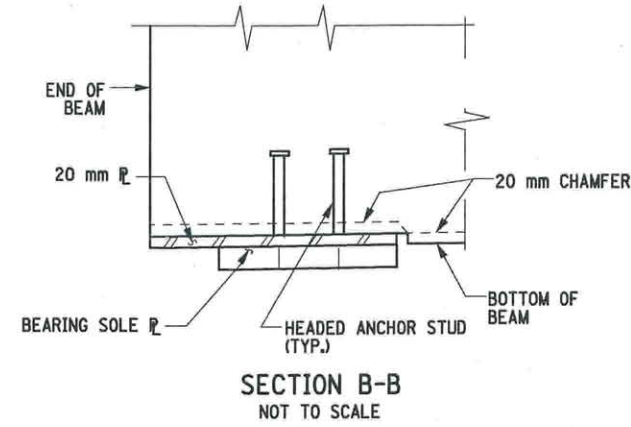
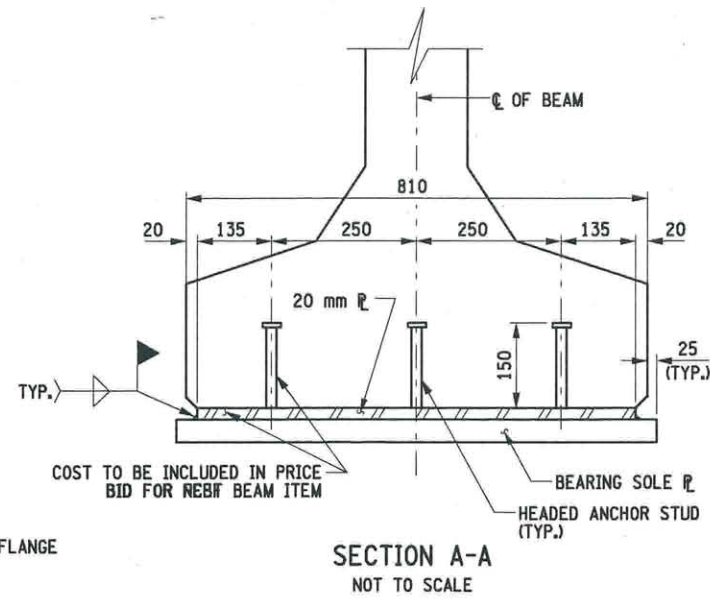
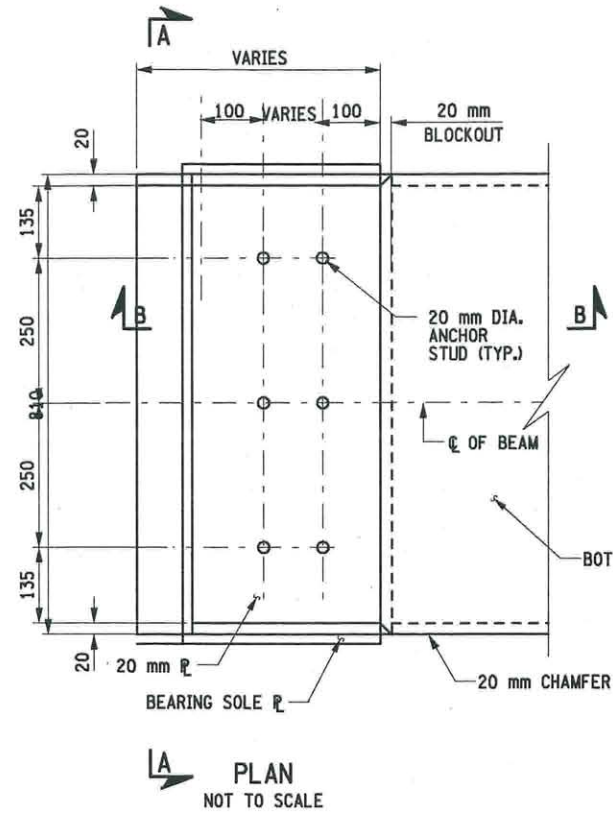
END ZONE REINFORCEMENT
 NOT TO SCALE

PREPARED BY: ON: ALTERED BY: ON:

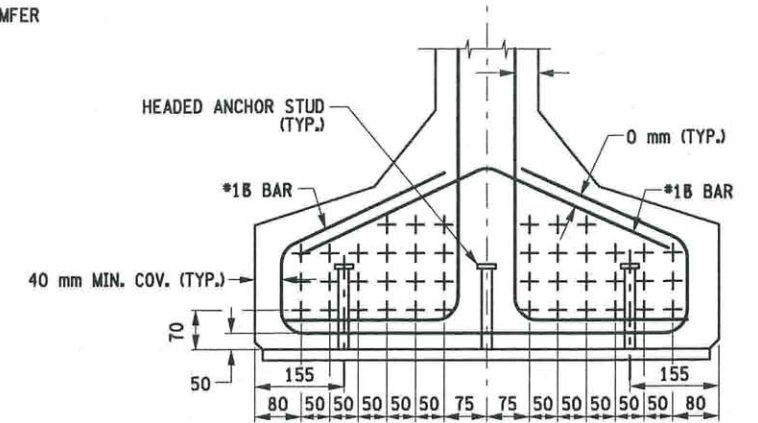


AS BUILT REVISIONS DESCRIPTION OF WORK:	BRIDGE REHABILITATION ROUTE 31 OVER CANANDAIGUA OUTLET S.H. 8028, ROUTE 31 VILLAGE OF LYONS COUNTY: WAYNE	PIN 4031.68 ROUTE 31 PS&E DATE 05/15/08	BRIDGES 1021750	CULVERTS	ALL DIMENSIONS IN mm UNLESS OTHERWISE NOTED	CONTRACT NUMBER D260882
SIGNATURE _____ DATE _____					PRESTRESSED CONCRETE ADJACENT BEAMS DETAILS (1 OF 4) ROUTE 31 OVER CANANDAIGUA OUTLET	DRAWING NO. ST-22 SHEET NO.
DOCUMENT NAME: 403168_CPB_70_DTL_ELV3.DGN						NEW YORK STATE DEPARTMENT OF TRANSPORTATION REGION 04

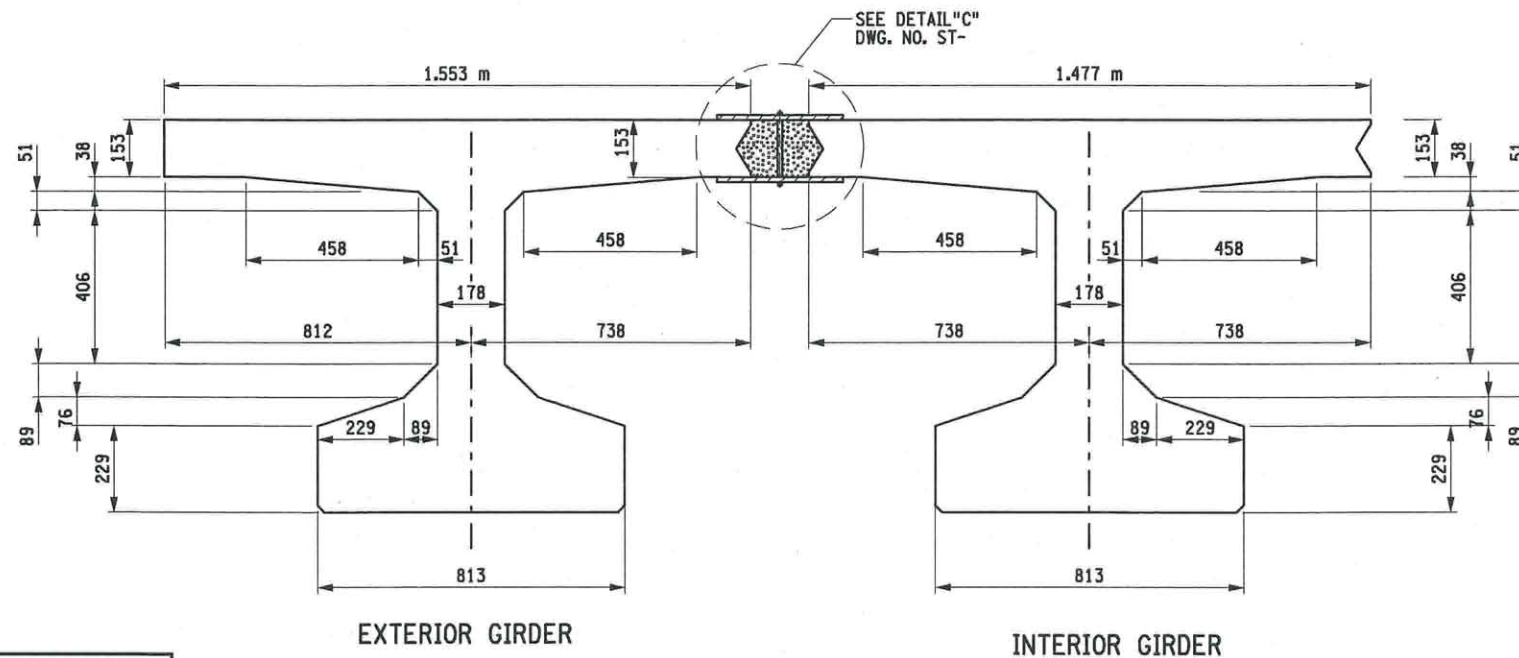
FILE NAME = 403168_CPB_70_DTL_ELV4.DGN
 DATE/TIME = 14-MAY-2006 14:34
 USER = mweber
 DESIGN SUPERVISOR M. ROYCE
 JOB MANAGER J.T. NEIDHART
 DESIGNED BY M. WEBER
 CHECKED BY M. WEBER
 ESTIMATED BY M. IQBAL
 DRAFTED BY E. LABUNSKI
 CHECKED BY M. WEBER



EMBEDDED BEARING CONNECTION PLATE



ANCHOR STUD CLEARANCE DETAIL
NOT TO SCALE



EXTERIOR GIRDER

INTERIOR GIRDER

NOTES:

EMBEDDED BEARING CONNECTION PLATES SHALL BE ASTM A709 (GRADE 345) STEEL, AND SHALL BE GALVANIZED IN ACCORDANCE WITH MATERIAL SPEC. 719-01. THE HEADED ANCHOR STUDS SHALL BE ATTACHED TO THE PLATES PRIOR TO GALVANIZING.

ANCHOR STUDS SHALL MEET THE REQUIREMENTS LISTED IN SUB-SECTION 709-05, STUD SHEAR CONNECTORS.

SURFACES OF BEARING PLATES NOT IN CONTACT WITH CONCRETE SHALL BE GALVANIZED IN ACCORDANCE WITH MATERIAL SPEC. 719-01. AFTER WELDING TO BEARING, THE WELDED AREA SHALL BE RECOATED WITH AN APPROVED GALVANIZING MATERIAL.

DETAILS ON THE DRAWINGS LABELED AS "NOT TO SCALE" ARE INTENTIONALLY DRAWN NOT TO SCALE FOR VISUAL CLARITY. ALL OTHER DETAILS, FOR WHICH NO SCALE IS SHOWN, ARE DRAWN PROPORTIONAL AND ARE FULLY DIMENSIONED.

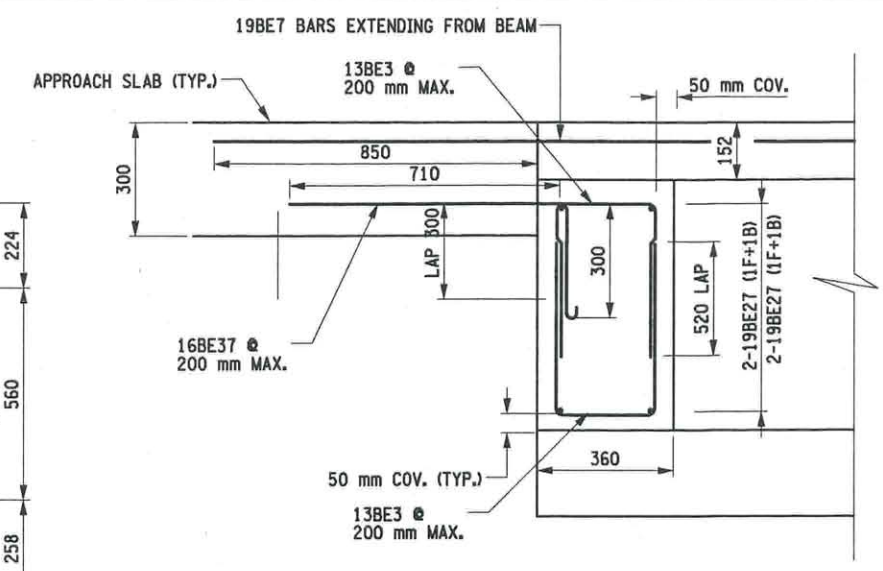
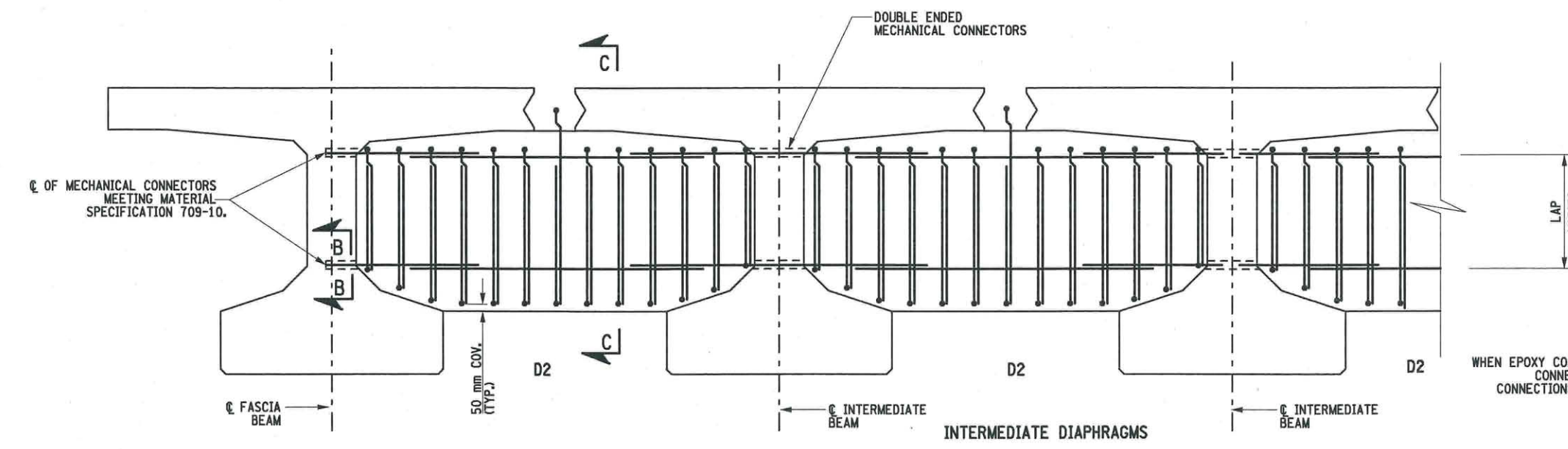
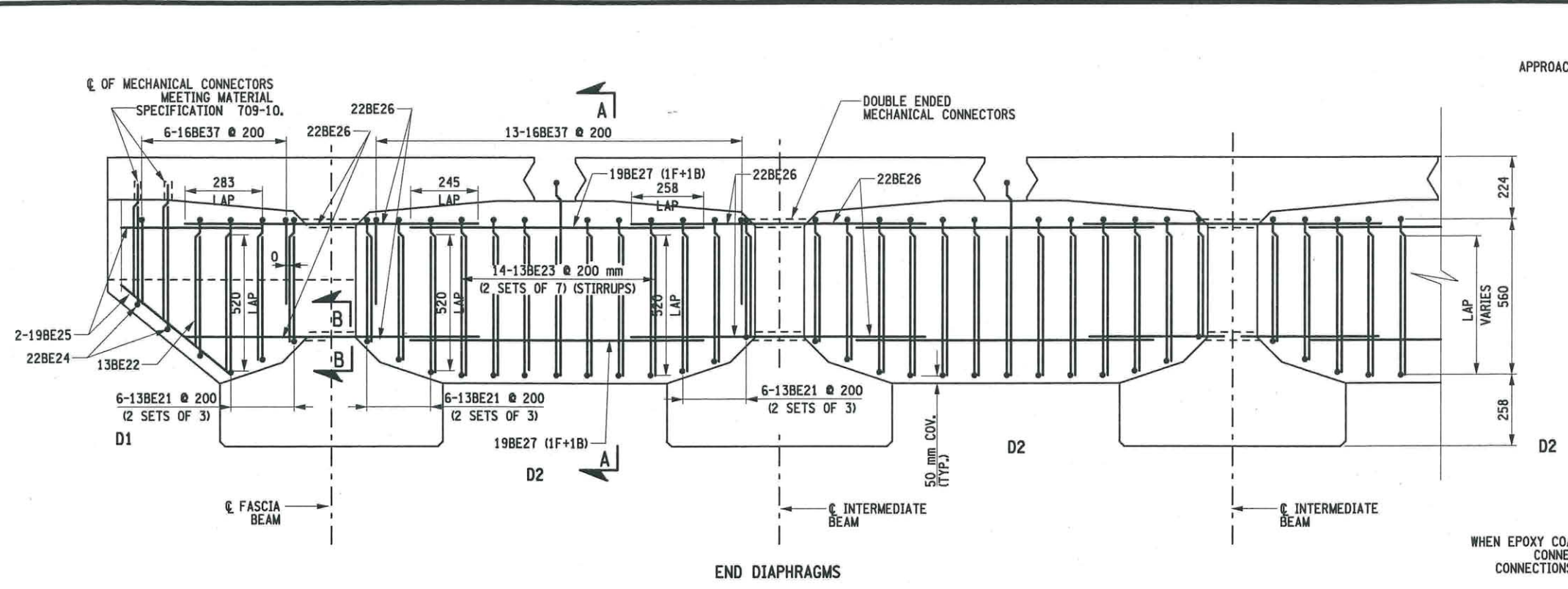
ALL DIMENSIONS ARE SHOWN IN MILLIMETERS UNLESS OTHERWISE NOTED.

PREPARED BY: ON:	ALTERED BY: ON:

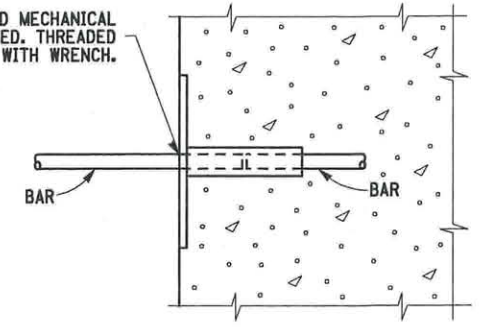
AS BUILT REVISIONS DESCRIPTION OF WORK:	BRIDGE REHABILITATION ROUTE 31 OVER CANANDAIGUA OUTLET S.H. 8028, ROUTE 31 VILLAGE OF LYONS COUNTY: WAYNE	PIN 4031.68 ROUTE 31 PS&E DATE 05/15/08	BRIDGES 1021750	CULVERTS	ALL DIMENSIONS IN m UNLESS OTHERWISE NOTED	CONTRACT NUMBER D260882
SIGNATURE _____	DATE _____				PRESTRESSED CONCRETE BEAM BEAM DETAILS (2 OF 4) ROUTE 31 OVER CANANDAIGUA OUTLET	DRAWING NO. ST-23 SHEET NO.
DOCUMENT NAME: 403168_CPB_70_DTL_ELV4.DGN						NEW YORK STATE DEPARTMENT OF TRANSPORTATION REGION 04

FILE NAME = 403168_CPB_70_DTL_ELV5.DGN
 DATE/TIME = 14-MAY-2008 14:35
 USER = mweber

DESIGN SUPERVISOR M. ROYCE
 JOB MANAGER J.J. NEIDHART
 DESIGNED BY M. WEBER
 CHECKED BY M. JOBAL
 ESTIMATED BY M. JOBAL
 DRAFTED BY E. LABUNSKI
 CHECKED BY M. WEBER



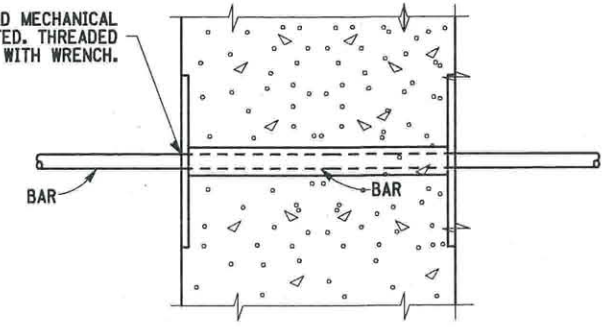
WHEN EPOXY COATED REINFORCEMENT IS USED MECHANICAL CONNECTOR SHALL BE EPOXY COATED. THREADED CONNECTIONS SHALL BE TORQUED TIGHT WITH WRENCH.



MECHANICAL CONNECTOR DETAIL
 NOT TO SCALE

NOTE: MECHANICAL CONNECTORS SHALL CONFORM TO N.Y.S. STANDARD SPECIFICATIONS SUBSECTION 709-10. COST OF MECHANICAL CONNECTORS, FURNISHED AS PER DEPARTMENTS APPROVED LIST SHALL BE INCLUDED IN THE UNIT PRICE BID FOR REBAR.

WHEN EPOXY COATED REINFORCEMENT IS USED MECHANICAL CONNECTOR SHALL BE EPOXY COATED. THREADED CONNECTIONS SHALL BE TORQUED TIGHT WITH WRENCH.



DOUBLE ENDED MECHANICAL CONNECTOR
 NOT TO SCALE

NOTES:

THE COST OF THE DIAPHRAGMS AND THEIR REINFORCEMENT SHALL BE INCLUDED IN THE PRICE BID FOR THE BEAM ITEM.
 CONCRETE FOR CAST-IN-PLACE DIAPHRAGMS SHALL BE CLASS HP.
 SLEEVES SHALL BE ALIGNED WITH THE DIAPHRAGM SKEWS AS SHOWN ON THE FRAMING PLAN FOR SKEWS ≤ 20°. FOR SKEWS > 20° MECHANICAL CONNECTORS SHALL BE SET PERPENDICULAR TO THE WEB FOR INTERMEDIATE DIAPHRAGMS AND ALONG THE SKEW FOR END DIAPHRAGMS.
 MECHANICAL CONNECTORS SHALL BE CAST-IN-PLACE IN THE PRECAST BEAMS BY THE FABRICATOR. THE #22(E OR G) REINFORCEMENT BAR MECHANICAL CONNECTORS SHALL PROVIDE A MINIMUM ULTIMATE TENSILE CAPACITY OF 75 kN IN 52 MPa CONCRETE.

MECHANICAL CONNECTORS USED BENEATH A DECK JOINT THAT ARE WITHIN ONE BEAM DEPTH OF THE DECK JOINT SHALL BE STAINLESS STEEL IN ACCORDANCE WITH N.Y.S. STD. SPECIFICATIONS SUBSECTION 715-16.

MECHANICAL CONNECTORS SHALL BE POSITIONED TO AVOID INTERFERENCE WITH PRESTRESSING STRANDS.

DETAILS ON THE DRAWINGS LABELED AS "NOT TO SCALE" ARE INTENTIONALLY DRAWN NOT TO SCALE FOR VISUAL CLARITY. ALL OTHER DETAILS, FOR WHICH NO SCALE IS SHOWN, ARE DRAWN PROPORTIONAL AND ARE FULLY DIMENSIONED.

ALL DIMENSIONS ARE SHOWN IN MILLIMETERS UNLESS OTHERWISE NOTED.

FOR SECTION B-B AND C-C SEE DWG. NO. ST-

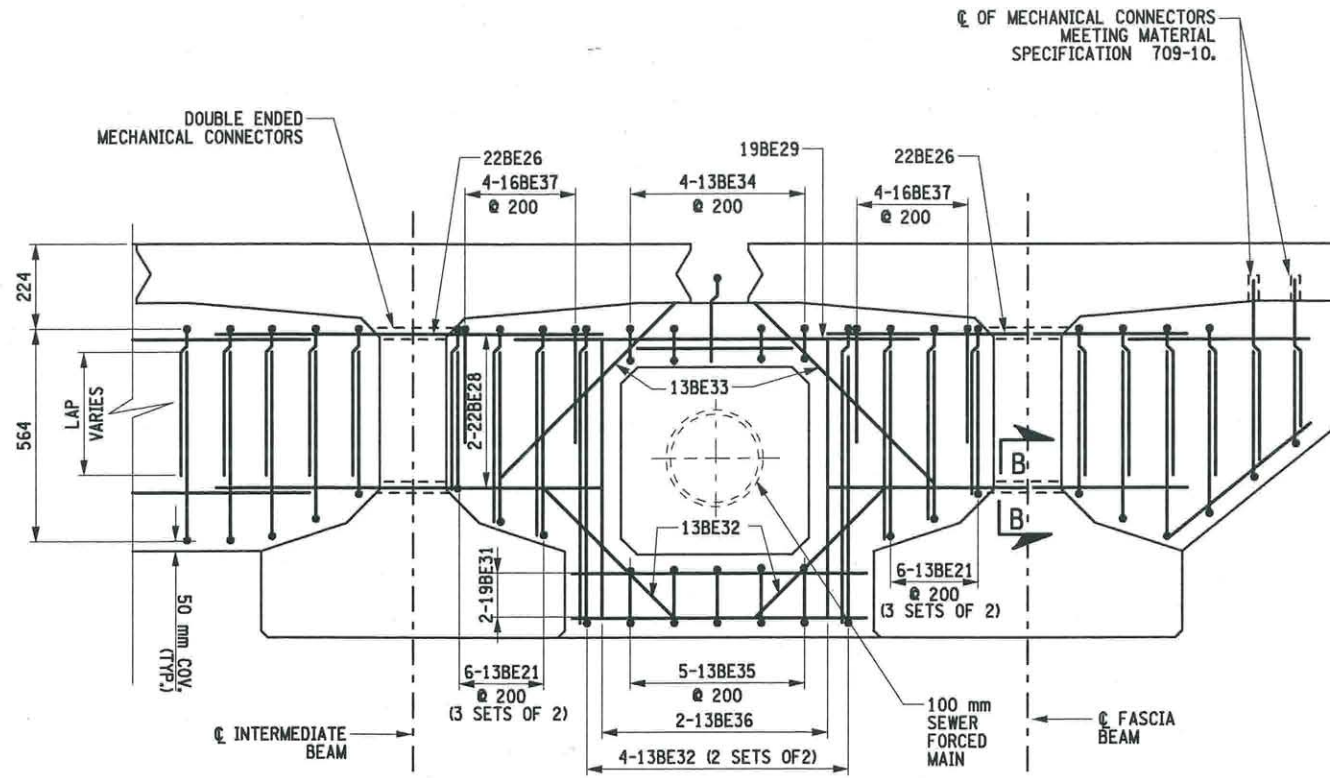
PREPARED BY: ON:	ALTERED BY: ON:
SIGNATURE _____ DATE _____	

AS BUILT REVISIONS DESCRIPTION OF WORK:	BRIDGE REHABILITATION ROUTE 31 OVER CANANDAIGUA OUTLET S.H. 8028, ROUTE 31 VILLAGE OF LYONS COUNTY: WAYNE	PIN 4031.68 ROUTE 31 PS&E DATE 05/15/08	BRIDGES 1021750	CULVERTS	ALL DIMENSIONS IN m UNLESS OTHERWISE NOTED	CONTRACT NUMBER D260882
BEAM DETAILS (3 OF 4) ROUTE 31 OVER CANANDAIGUA OUTLET					DRAWING NO. ST-24 SHEET NO.	
NEW YORK STATE DEPARTMENT OF TRANSPORTATION REGION 04						

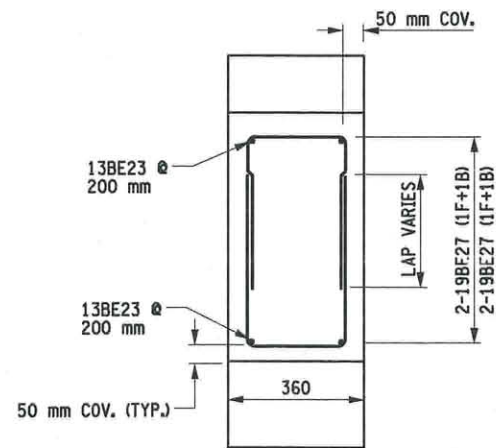
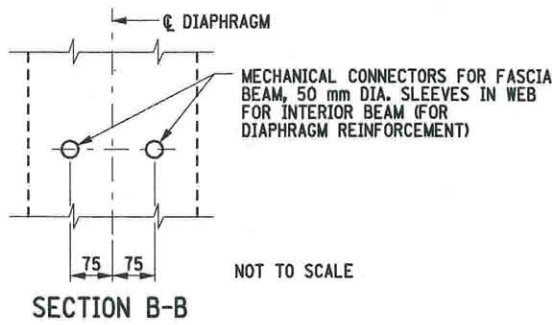
DOCUMENT NAME: 403168_CPB_70_DTL_ELV5.DGN

FILE NAME = 403168_CPB_70_DTL_EL.V6.DGN
 DATE/TIME = 14-MAY-2008 14:51
 USER = elabunski

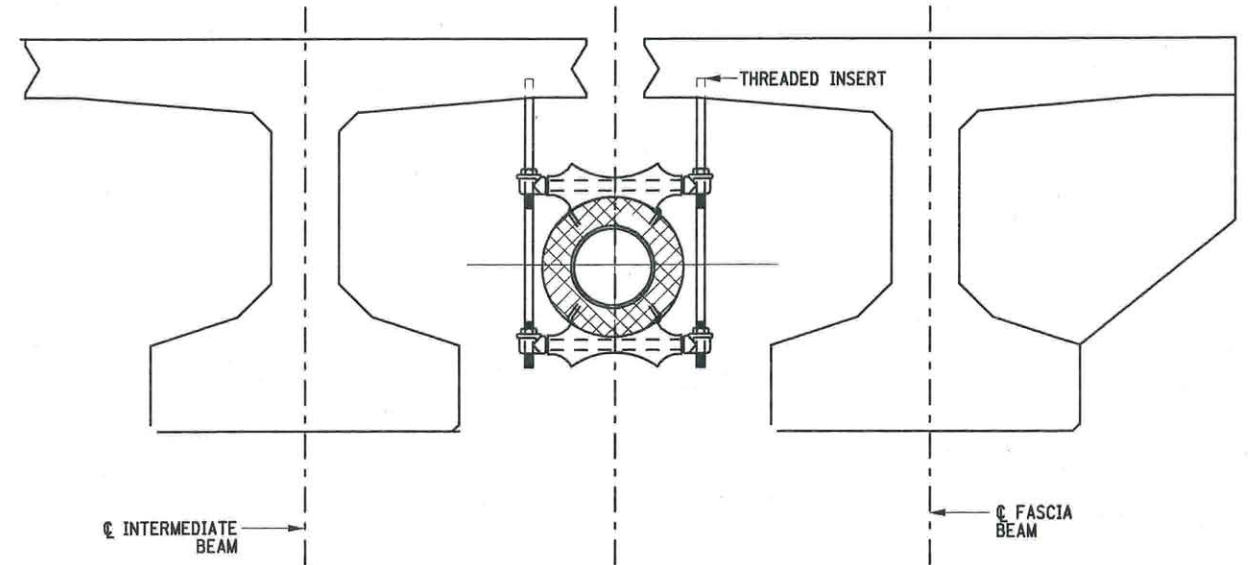
DESIGN SUPERVISOR M. ROYCE JOB MANAGER J.T. NEIDHART
 CHECKED BY M. WEBER DESIGNED BY M. WEBER ESTIMATED BY M. WEBER DRAFTED BY M. LABUNSKI CHECKED BY M. WEBER



D3
 END DIAPHRAGMS WITH UTILITY ACCOMODATION



SECTION C-C



WATER UTILITY SUPPORT

PREPARED BY: ON:	ALTERED BY: ON:
SIGNATURE _____ DATE _____	

AS BUILT REVISIONS DESCRIPTION OF WORK:	BRIDGE REHABILITATION ROUTE 31 OVER CANANDAIGUA OUTLET S.H. 8028, ROUTE 31 VILLAGE OF LYONS COUNTY: WAYNE	PIN 4031.68 ROUTE 31 PS&E DATE 05/15/08	BRIDGES 1021750	CULVERTS	ALL DIMENSIONS IN mm UNLESS OTHERWISE NOTED	CONTRACT NUMBER D260882
PRESTRESSED CONCRETE BEAM DETAILS (4 OF 4) ROUTE 31 OVER CANANDAIGUA OUTLET					DRAWING NO. ST-25 SHEET NO.	
NEW YORK STATE DEPARTMENT OF TRANSPORTATION REGION 04						

DOCUMENT NAME: 403168_CPB_70_DTL_EL.V6.DGN