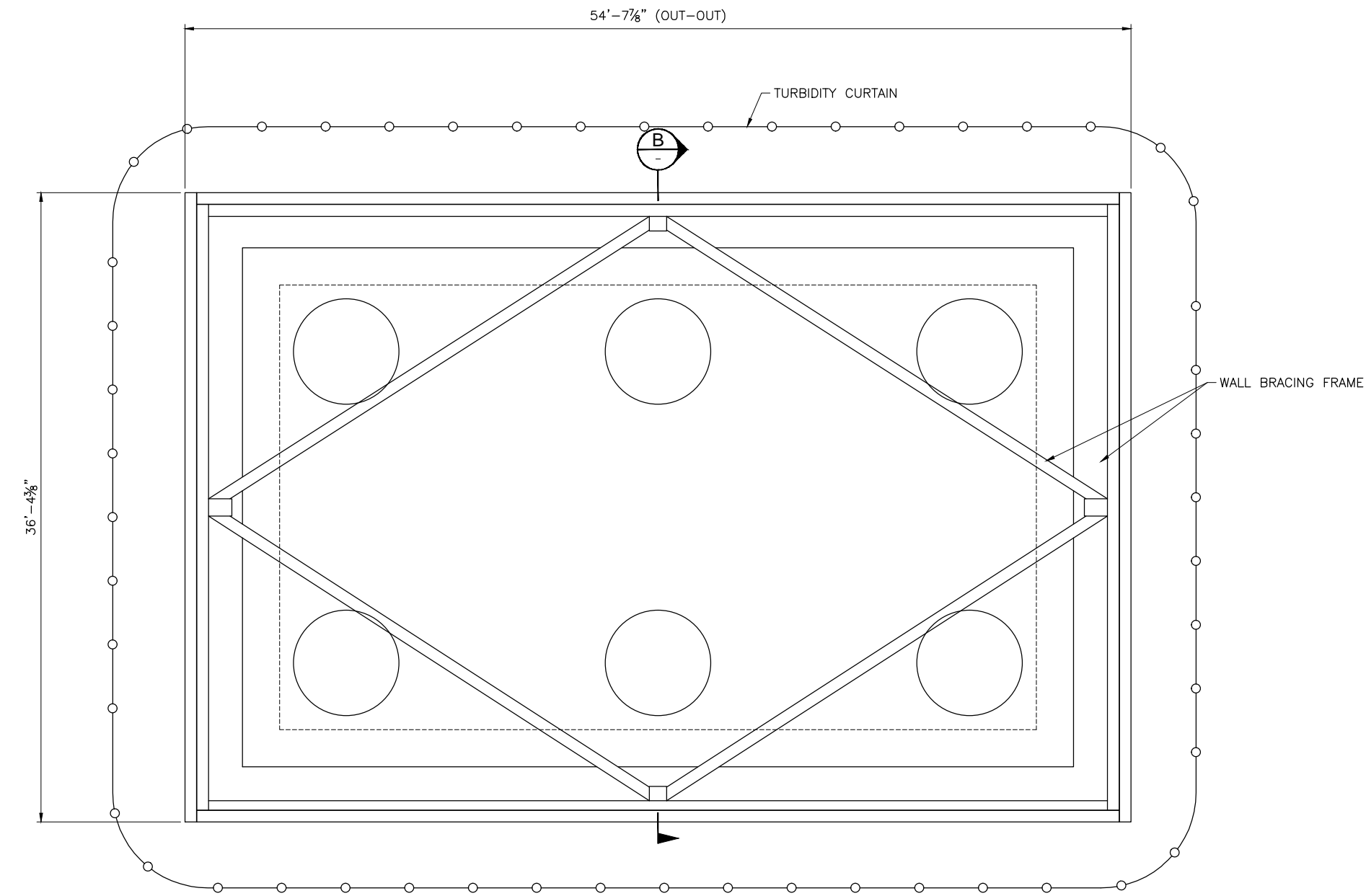


WATERTIGHT ENCLOSURE INSTALLATION PROCEDURE

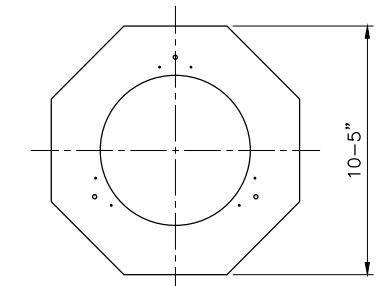
1. SLIDE A COLLAR OVER EACH OF THE 6 INSTALLED SHAFTS. SUSPEND COLLARS ON BARS FROM TEMPORARY BEAMS PLACED ON TOP OF THE CASING.
 2. GROUT COLLAR ANNULAR SPACE.
 3. REMOVE THE HANGERS AND BEAMS AFTER THE GROUT HAS ATTAINED A STRENGTH OF 1000 PSI.
 4. AFTER THE GROUT HAS ATTAINED A STRENGTH OF 5000 PSI, LIFT THE PRE-ASSEMBLED STRUCTURE IN PLACE TO REST ON TOP OF THE COLLARS. STRUCTURE CONSISTS OF THE PRE-CAST SLAB, THE WATERTIGHT WALL PANELS AND THE BRACING FRAME.
 5. PLACE THE 2FT THICK SEAL CONCRETE SLAB (SUBMERGED PLACEMENT).
 6. AFTER THE SEAL CONCRETE STRENGTH HAS ATTAINED 2000 PSI, DE-WATER THE STRUCTURE - DISCHARGE THE WATER WITHIN THE CONFINED AREA OF THE TURBIDITY CURTAIN.
 7. REMOVE CASING AND CLEAN THE SHAFT TO THE SPECIFIED ELEVATION.
 8. AFTER THE SEAL CONCRETE STRENGTH HAS ATTAINED 3000 PSI, PLACE THE FIRST 2.5 FT. HIGH LIFT OF THE FOOTING.
 9. AFTER THE FIRST FOOTING LIFT CONCRETE STRENGTH HAS ATTAINED 3000 PSI, PLACE THE SECOND LIFT OF THE FOOTING.
 10. REMOVE THE SLOPED TOP FORM.
 11. INSTALL THE GRANITE CLADDING.
 12. REMOVE THE WALLS AND WALL BRACING.
- FOOTING COMPLETED

NOTES:

1. THE PRE-CAST COLLAR AND THE PRE-CAST SLAB ARE TO STAY IN PLACE PERMANENTLY.
2. THE PRECAST SLAB WILL PROJECT 6IN OVER THE FOOTING PERIMETER.
3. SEAL SLAB CONCRETE: CLASS G



PLAN A
PIERS 4 & 5 SHOWN
(PIER 3 SIMILAR)



COLLAR
OCTAGONAL FORMED COLLAR
WEIGHT: 32,000 lbs (APPROX)



DESIGNED	DATE	REVISIONS				SPECIFICATIONS AND REFERENCE DRAWINGS		
		REV	DATE	DESCRIPTION	BY	CHKD	SPECIFICATION or DRAWING	DESCRIPTION
DRAWN		0	24 AUG 2010	FOR CONSTRUCTION	RR			
CHECKED								
APPROVED								



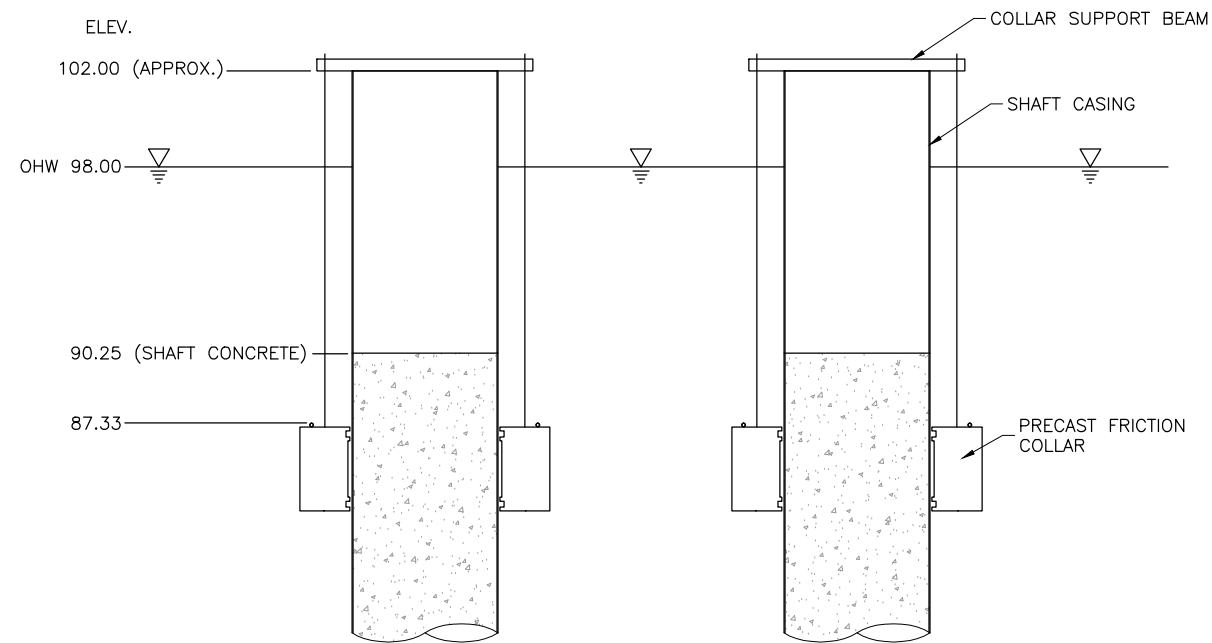
LAKE CHAMPLAIN BRIDGE REPLACEMENT
NYS ROUTE 185 - VT ROUTE 17
ESSEX COUNTY, NY - ADDISON COUNTY, VT

SEAL

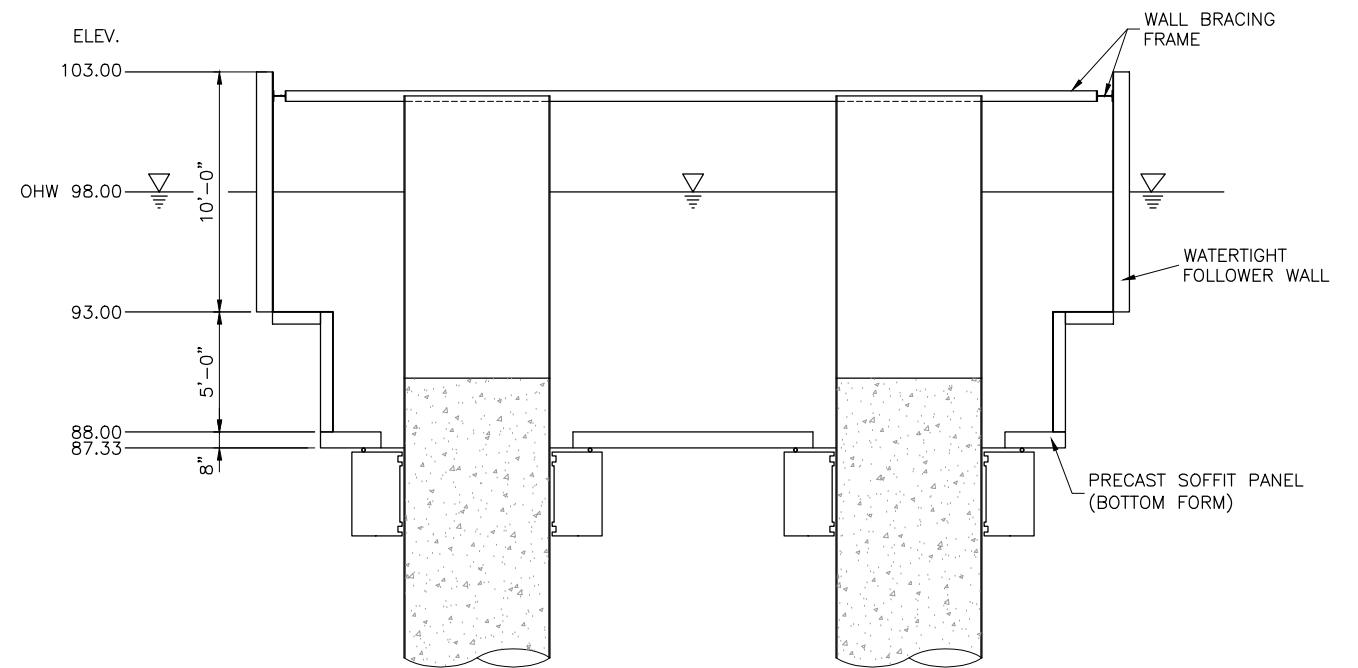
WATERTIGHT ENCLOSURE
PIERS 3, 4 AND 5
INSTALLATION PROCEDURE
GENERAL ARRANGEMENT

FLATIRON JOB No. 1051 DRAWING No. 1051-WTE-INS-001

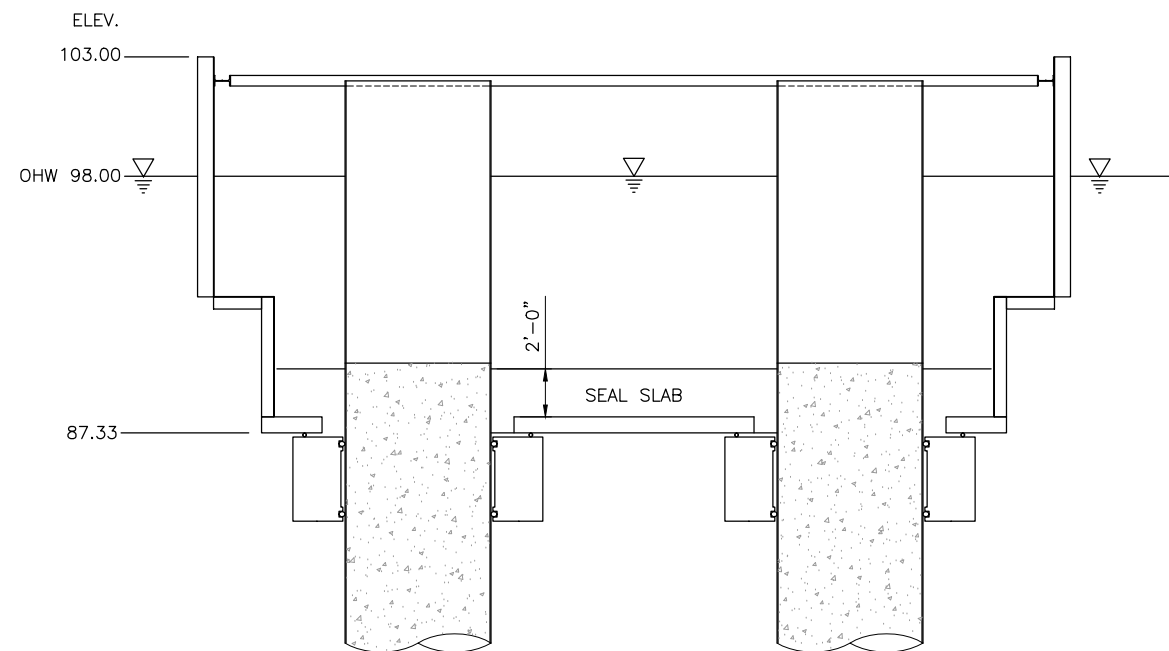
SUPERSEDES PRINTS OF THIS DRAWING WITH REVISIONS PREVIOUS TO → 0



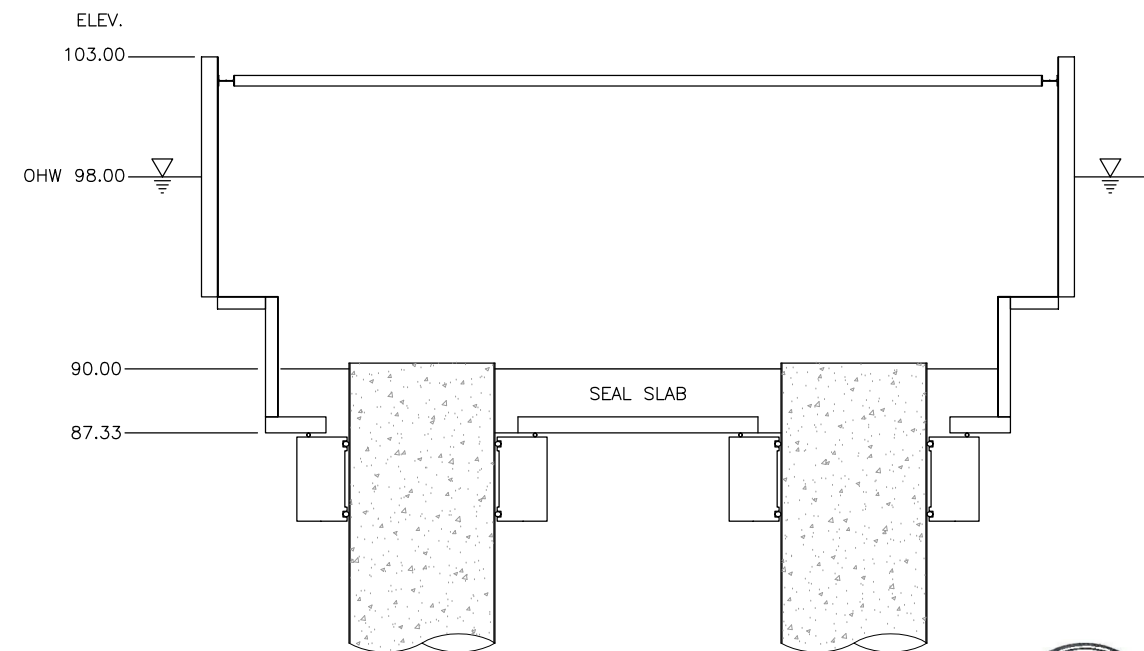
SECTION B
-
STEPS 1, 2 AND 3



SECTION B
-
STEP 4



SECTION B
-
STEP 5



SECTION B
-
STEPS 6 AND 7



DESIGNED	DATE
DRAWN	DATE
CHECKED	DATE
APPROVED	DATE

REVISIONS			
REV	DATE	DESCRIPTION	BY
0	24 AUG 2010	FOR CONSTRUCTION	RR

SPECIFICATIONS AND REFERENCE DRAWINGS	
SPECIFICATION or DRAWING	DESCRIPTION

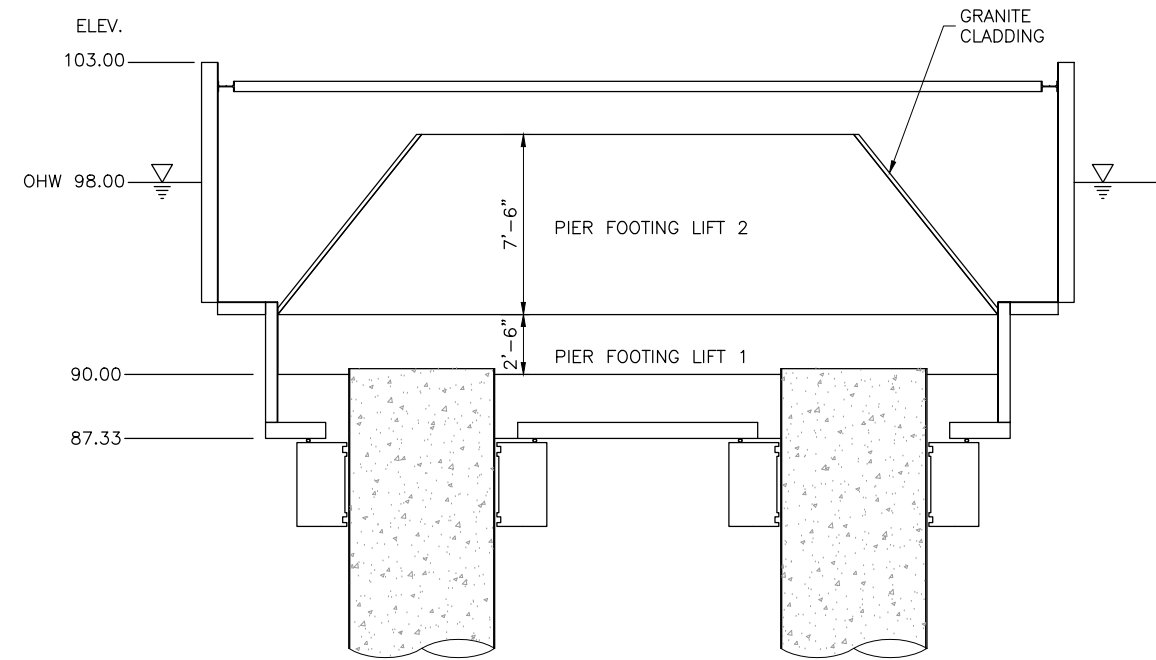


LAKE CHAMPLAIN BRIDGE REPLACEMENT
NYS ROUTE 185 - VT ROUTE 17
ESSEX COUNTY, NY - ADDISON COUNTY, VT

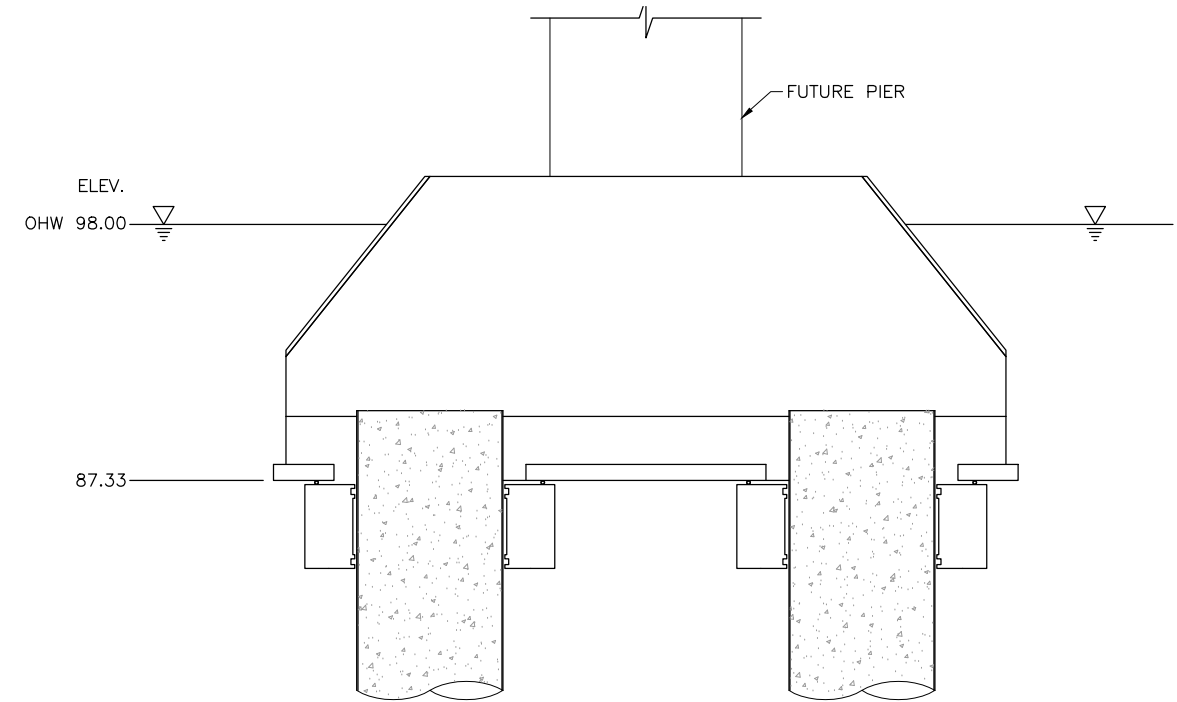
SEAL

WATERTIGHT ENCLOSURE
PIERS 3, 4 AND 5
INSTALLATION PROCEDURE
SEQUENCE I

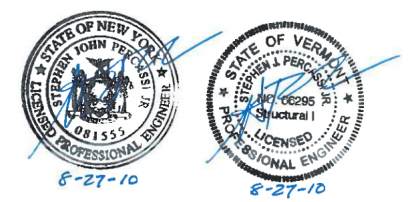
FLATIRON JOB No. 1051 DRAWING No. 1051-WTE-INS-002
SUPERSEDES PRINTS OF THIS DRAWING WITH REVISIONS PREVIOUS TO 0



SECTION **B**
-
STEPS 8-11



SECTION **B**
-
STEP 12



DESIGNED	DATE	REVISIONS					SPECIFICATIONS AND REFERENCE DRAWINGS	
		REV	DATE	DESCRIPTION	BY	CHKD	SPECIFICATION or DRAWING	DESCRIPTION
DRAWN		0	24 AUG 2010	FOR CONSTRUCTION	RR			
CHECKED								
APPROVED								



LAKE CHAMPLAIN BRIDGE REPLACEMENT
NYS ROUTE 185 - VT ROUTE 17
ESSEX COUNTY, NY - ADDISON COUNTY, VT

SEAL

WATERTIGHT ENCLOSURE
PIERS 3, 4 AND 5
INSTALLATION PROCEDURE
SEQUENCE II

FLATIRON JOB No. 1051 DRAWING No. 1051-WTE-INS-003

SUPERSEDES PRINTS OF THIS DRAWING WITH REVISIONS PREVIOUS TO → 0