

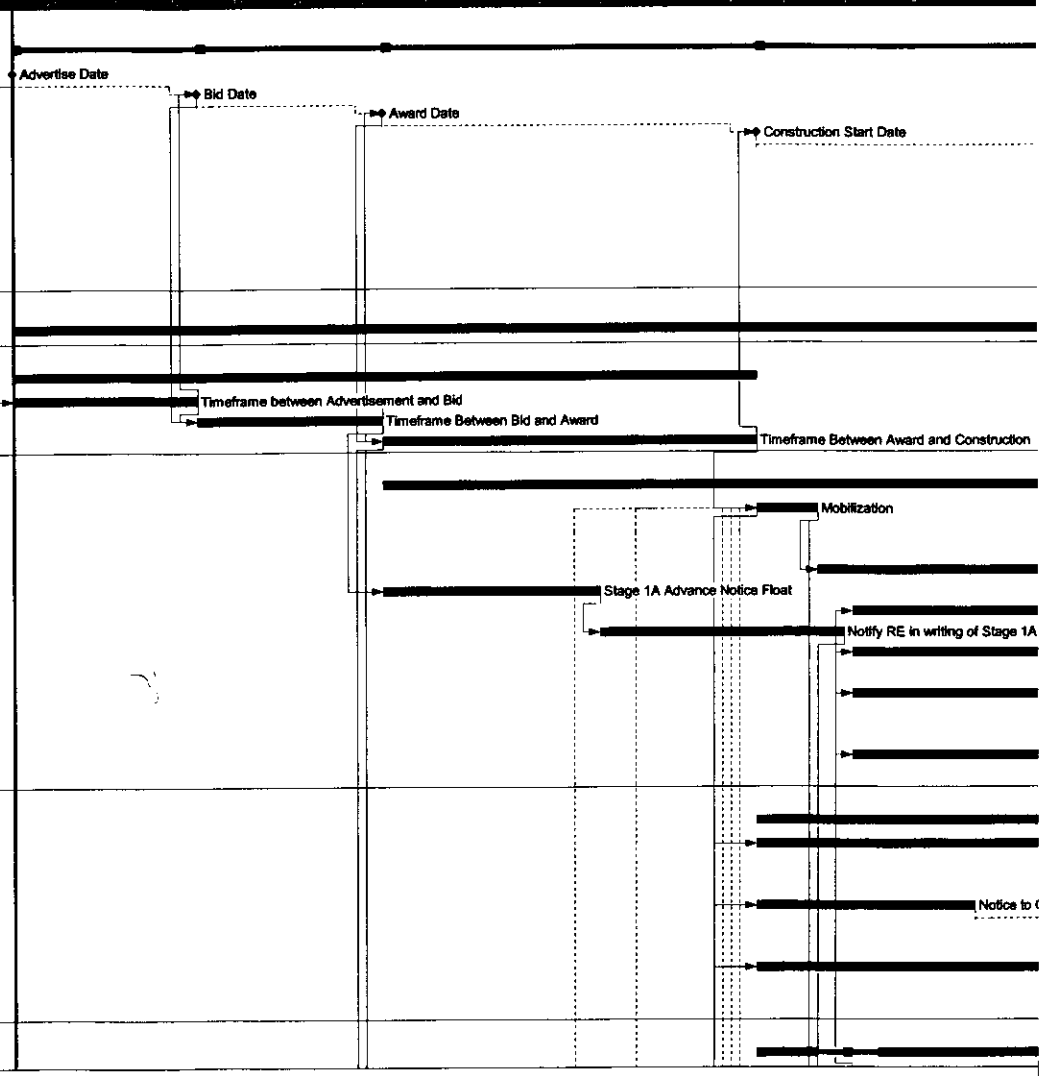
		219	219	24SEP09	02AUG10	0	0
M100	Advertise Date	0	0	24SEP09		0	0
M200	Bid Date	0	0	15OCT09		0	0
M300	Award Date	0	0	05NOV09		0	0
M500	Construction Start Date	0	0	18DEC09		117d	0
M800	Stage 1A	0	0		13APR10	37d	0
M801	Stage 1B	0	0		22APR10	29d	0
M805	Stage 2	0	0		06MAY10	20d	0
M810	Stage 3	0	0		09MAY10	25d	0
M815	Stage 4	0	0		03JUN10	0	0
M900	Substantial Completion	0	0		03JUN10	0	0
M950	Completion	0	0		02AUG10	0	0

		219	219	24SEP09	02AUG10	0	0
Administrative							
A100	Timeframe between Advertisement and Bid	15	15	24SEP09	14OCT09	0	0
A200	Timeframe Between Bid and Award	15	15	15OCT09	04NOV09	0	0
A300	Timeframe Between Award and Construction	30	30	05NOV09	17DEC09	0	0

		128	128	05NOV09	09MAY10	0	0
General Work Items							
C1000	Mobilization	5	5	18DEC09	24DEC09	0	0
C1010	Install Soil Erosion & Sediment Control devices	2	2	14APR10	15APR10	0	0
C1020	Clearing Site	2	2	16APR10	19APR10	0	0
C1030	Fabrication and Delivery of Superstructure	120	120	25DEC09	23APR10	13d	0
C1035	Stage 1A Advance Notice Float	25	25	05NOV09	29NOV09	0	0
C1040	Stage 3 Advance Notice Float	101	101	29DEC09	08APR10	0	0
C1045	Notify RE in writing of Stage 1A traff. pattern	28	28	30NOV09	27DEC09	0	0
C1050	Stage 1B Advance Notice Float	84	84	29DEC09	22MAR10	0	0
C1055	Notify RE in writing of Stage 1B traff. pattern	28	28	23MAR10	19APR10	0	0
C1060	Stage 2 Advance Notice Float	87	87	29DEC09	25MAR10	0	0
C1065	Notify RE in writing of Stage 2 traff. pattern	28	28	26MAR10	22APR10	0	0
C1070	Notify RE in writing of Stage 3 traff. pattern	28	28	09APR10	06MAY10	0	0
C1075	Stage 4 Advance Notice float	104	104	29DEC09	11APR10	0	0
C1080	Notify RE in writing of Stage 4 traff. pattern	28	28	12APR10	09MAY10	0	0

		90	90	18DEC09	27APR10	8d	0
Utility Relocations							
C1120	Notice to JCP&L	60	60	18DEC09	16MAR10	8d	0
C1130	JCP&L Electric Relocation on Bridge	5	5	17MAR10	23MAR10	8d	0
C1140	JCP&L Electric Relocation in Staging Area	3	3	17MAR10	19MAR10	21d	0
C1150	Notice to Cablevision	15	15	18DEC09	11JAN10	73d	0
C1160	Cablevision Cable Relocation on Bridge	10	10	14APR10	27APR10	8d	0
C1170	Cablevision Cable Relocation in Staging Area	10	10	25MAR10	07APR10	21d	0
C1180	Notice to Verizon	30	30	18DEC09	01FEB10	43d	0
C1190	Verizon Telephone Relocation on Bridge	15	15	24MAR10	13APR10	8d	0
C1200	Verizon Telephone Relocation in Staging Area	3	3	22MAR10	24MAR10	21d	0

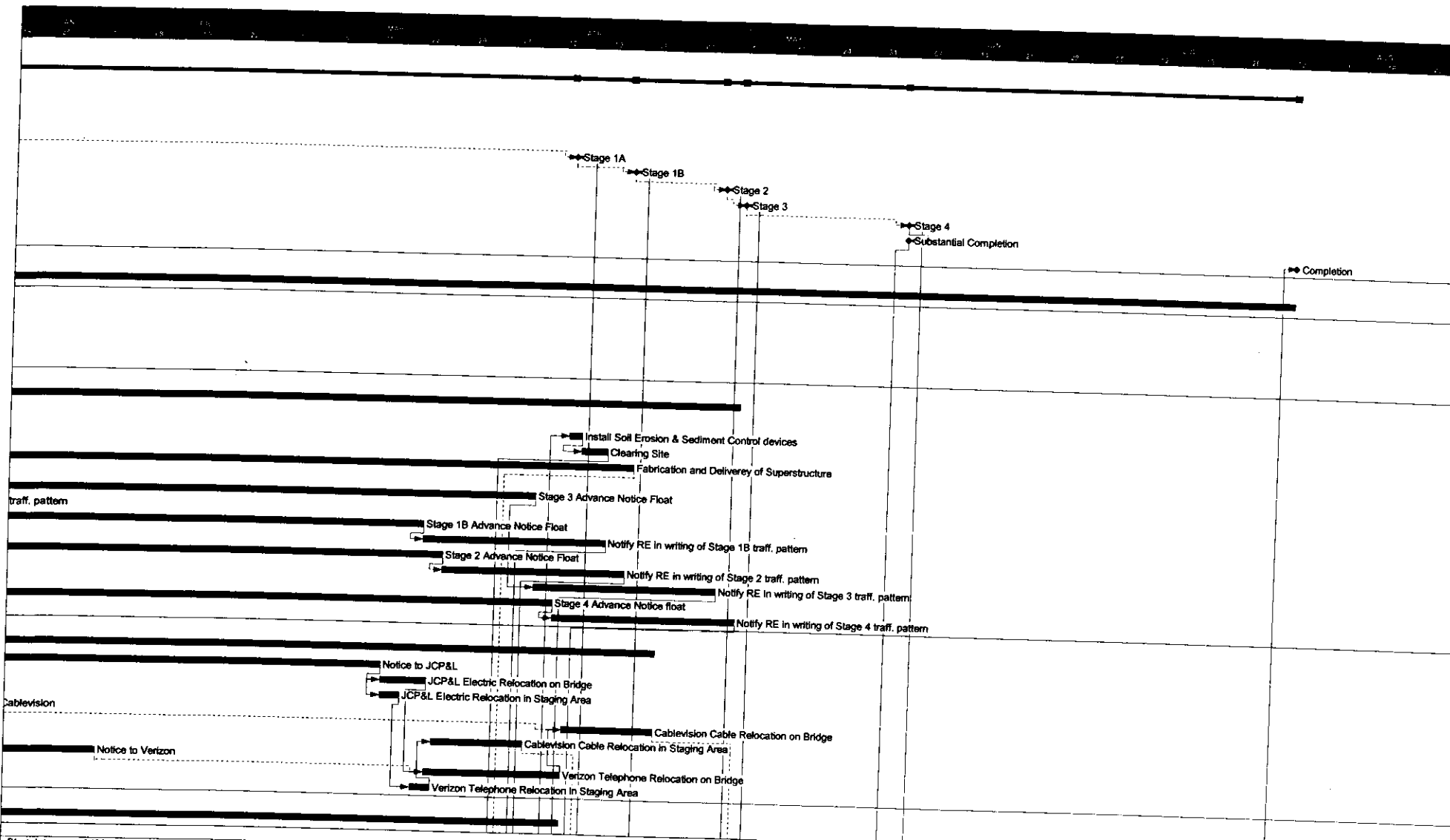
		80	80	18DEC09	13APR10	4d	0
Stage 1A							



**NJDOT
GORDON'S CORNER ROAD OVER ROUTE 9
PS&E - CONSTRUCTION SCHEDULE**

Start date 24SEP09
 Finish date 02AUG10
 Data date 24SEP09
 Run date 03SEP09
 Page number 1A
 © Primavera Systems, Inc.

■ Early bar
 ■ Progress bar
 ■ Critical bar
 ■ Summary bar
 ◆ Start milestone point
 ◆ Finish milestone point



Start date	24SEP09
Finish date	02AUG10
Data date	24SEP09
Run date	03SEP09
Page number	1B
© Primavera Systems, Inc.	

NJDOT
GORDON'S CORNER ROAD OVER ROUTE 9
PS&E - CONSTRUCTION SCHEDULE

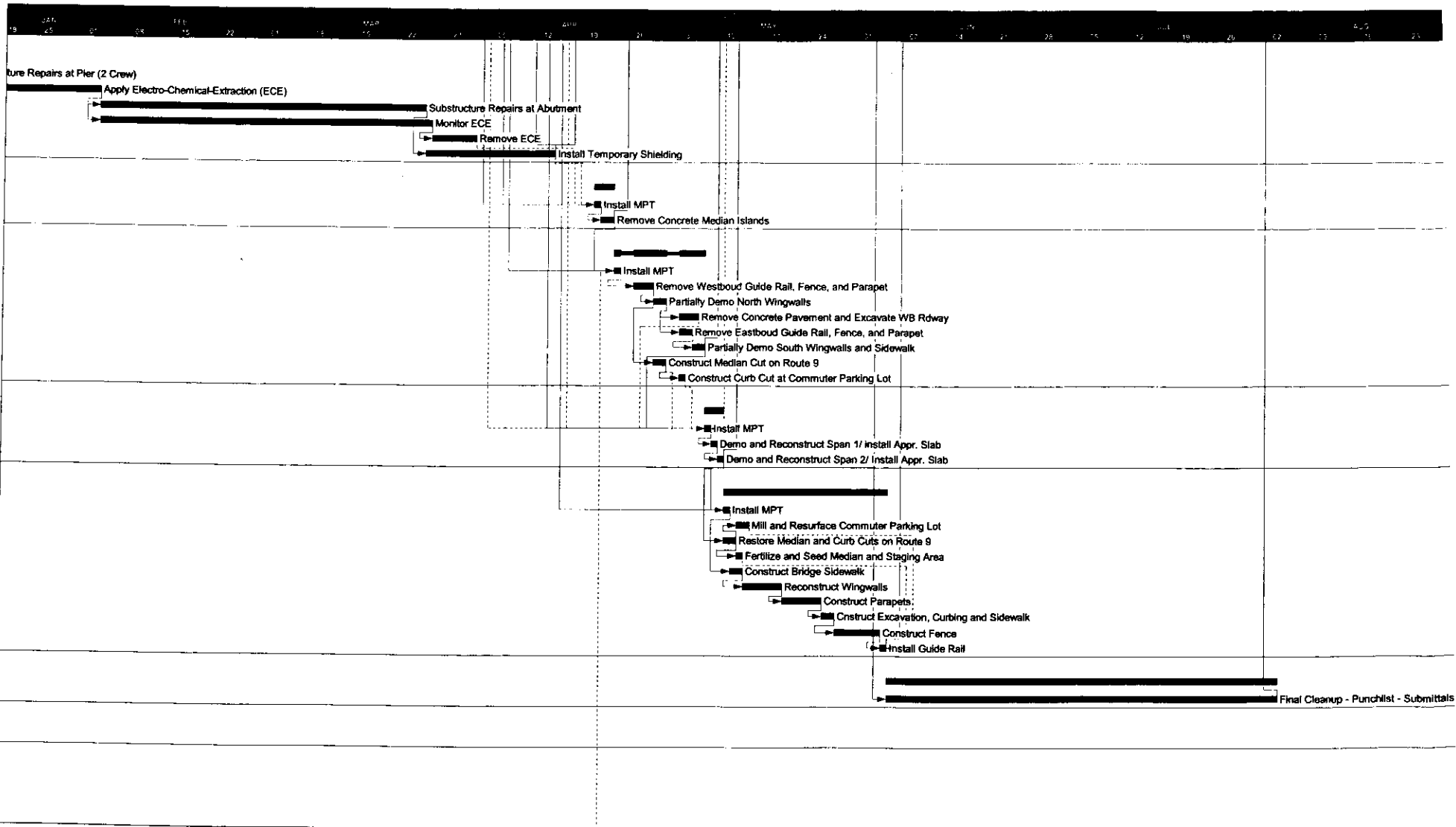
- █ Early bar
- █ Progress bar
- █ Critical bar
- Summary bar
- ◆ Start milestone point
- ◆ Finish milestone point

Act ID	Description	Orig Dur	Rem Dur	Ear Start	Early Finish	Total Float														
C1220	Install MPT	1	1	28DEC09	28DEC09	0	0													
C1225	Substructure Surveying	5	5	18DEC09	24DEC09	4d	0													
C1230	Substructure Repairs at Pier (2 Crew)	8	8	01JAN10	12JAN10	0	0													
C1240	Apply Electro-Chemical-Extraction (ECE)	15	15	13JAN10	02FEB10	0	0													
C1245	Substructure Repairs at Abutment	15	15	03FEB10	24MAR10	0	0													
C1250	Monitor ECE	51	51	03FEB10	25MAR10	18d	0													
C1260	Remove ECE	5	5	28MAR10	01APR10	12d	0													
C1270	Install Temporary Shielding	14	14	25MAR10	13APR10	0	0													
Stage 1B																				
		3	3	20APR10	22APR10	0	0													
C1300	Install MPT	1	1	20APR10	20APR10	0	0													
C1310	Remove Concrete Median Islands	2	2	21APR10	22APR10	0	0													
Stage 2																				
		10	10	23APR10	06MAY10	0	0													
C1420	Install MPT	1	1	23APR10	23APR10	0	0													
C1430	Removes Westbound Guide Rail, Fence, and Parapet	3	3	26APR10	28APR10	0	0													
C1440	Partially Demo North Wingwalls	2	2	29APR10	30APR10	0	0													
C1450	Remove Concrete Pavement and Excavate WB Rdway	3	3	03MAY10	05MAY10	1d	0													
C1460	Remove Eastbound Guide Rail, Fence, and Parapet	2	2	03MAY10	04MAY10	0	0													
C1470	Partially Demo South Wingwalls and Skidewalk	2	2	05MAY10	06MAY10	0	0													
C1480	Construct Median Cut on Route 9	2	2	29APR10	30APR10	3d	0													
C1490	Construct Curb Cut at Commuter Parking Lot	1	1	03MAY10	03MAY10	3d	0													
Stage 3 - Weekend Construction																				
		3	3	07MAY10	09MAY10	0	0													
C1500	Install MPT	1	1	07MAY10	07MAY10	0	0													
C1510	Demo and Reconstruct Span 1/ Install Appr. Slab	1	1	08MAY10	08MAY10	0	0													
C1520	Demo and Reconstruct Span 2/ Install Appr. Slab	1	1	09MAY10	09MAY10	0	0													
Stage 4																				
		19	19	10MAY10	03JUN10	0	0													
C1600	Install MPT	1	1	10MAY10	10MAY10	0	0													
C1605	Mill and Resurface Commuter Parking Lot	2	2	12MAY10	13MAY10	14d	0													
C1610	Restore Median and Curb Cuts on Route 9	2	2	10MAY10	11MAY10	13d	0													
C1615	Fertilize and Seed Median and Staging Area	1	1	12MAY10	12MAY10	4d	0													
C1620	Construct Bridge Sidewalk	2	2	11MAY10	12MAY10	0	0													
C1630	Reconstruct Wingwalls	4	4	13MAY10	18MAY10	0	0													
C1640	Construct Parapets	4	4	19MAY10	24MAY10	0	0													
C1650	Construct Excavation, Curbing and Sidewalk	2	2	25MAY10	26MAY10	0	0													
C1660	Construct Fence	4	4	27MAY10	02JUN10	0	0													
C1670	Install Guide Rail	1	1	03JUN10	03JUN10	0	0													
Final Cleanup																				
		60	60	04JUN10	02AUG10	0	0													
F9000	Final Cleanup - Punchlist - Submittals	60	60	04JUN10	02AUG10	0	0													
		60	60	24SEP09	17DEC09	158d	0													
Contractor Submittals (Not Materials)																				
		20	20	05NOV09	03DEC09	19d	0													
PS100	Safety Plan	15	15	05NOV09	26NOV09	10d	0													
PS110	Night Lighting	15	15	05NOV09	26NOV09	10d	0													
PS120	Disposal	15	15	05NOV09	26NOV09	10d	0													

Start date 24SEP09
 Finish date 02AUG10
 Data date 24SEP09
 Run date 03SEP09
 Page number 2A
 © Primavera Systems, Inc.

**NJDOT
 GORDON'S CORNER ROAD OVER ROUTE 9
 PS&E - CONSTRUCTION SCHEDULE**

- Early bar
- Progress bar
- Critical bar
- Summary bar
- ◆ Start milestone point
- ◆ Finish milestone point

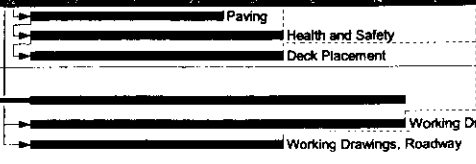


Start date	24SEP09
Finish date	02AUG10
Data date	24SEP09
Run date	03SEP09
Page number	29
© Primavera Systems, Inc.	

NJDOT
GORDON'S CORNER ROAD OVER ROUTE 9
PS&E - CONSTRUCTION SCHEDULE

- Early bar
- Progress bar
- Critical bar
- Summary bar
- ◆ Start milestone point
- ◆ Finish milestone point

Act ID	Description	Orig Dur	Rem Dur	Early Start	Early Finish	Total Float																
PS130	Paving	15	15	05NOV09	26NOV09	10d	0															
PS140	Health and Safety	20	20	05NOV09	03DEC09	10d	0															
PS150	Deck Placement	20	20	05NOV09	03DEC09	19d	0															
Working Drawings																						
		60	60	24SEP09	17DEC09	159d	0															
PS210	Working Drawings, Bridge	30	30	05NOV09	17DEC09	5d	0															
PS220	Working Drawings, Roadway	20	20	05NOV09	03DEC09	97d	0															
PS230		1	1	24SEP09	24SEP09	218d	0															



Start date	24SEP09
Finish date	02AUG10
Data date	24SEP09
Run date	03SEP09
Page number	3A
© Primavera Systems, Inc.	

NJDOT
GORDON'S CORNER ROAD OVER ROUTE 9
PS&E - CONSTRUCTION SCHEDULE

- Early bar
- Progress bar
- Critical bar
- Summary bar
- Start milestone point
- Finish milestone point